



COPAKE AUCTION INC.

31ST ANNUAL

ANTIQUE & CLASSIC BICYCLE AUCTION

OCTOBER 21, 2023 @ 9AM

This sale will be OPEN TO THE PUBLIC as well as all online Bidding Platforms
Gallery Preview: Oct. 19-20: 10-4 PM
Terms: Cash - Visa - MasterCard - Discover
- 20% Buyer's Premium (25% B.P. for Live Auctioneers, Invaluable and Auctionzip) - First time buyers must establish credit prior to auction to pay with check

COPAKE AUCTION INC.

Michael & Seth Fallon

266 Rt. 7A - Copake, NY 12516

Ph: 518-641-1935

info@copakeauction.com

**930
LOTS**



C. 1880's
Star High
Wheel



Pony
Star
Serial
#1



C. 1892
Eagle



POSTERS



1902 Steffy
Motorcycle



Rex
Pneumatic
Safety



Early Bamboo
Bicycle



1886 Rudge
Bicyclette



C. 1892
Hard Tire
Safety



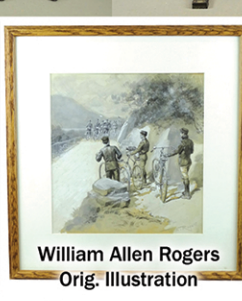
Original 1897
Chicago Cycle
Exhibition Artwork



C. 1870
Stevens
Brown Toy



OVER 300
Pinbacks



William Allen Rogers
Orig. Illustration



Eureka
Hub
Lamp



Catalogs &
Ephemera

Masi Nuova Strada

Featuring the Collections of
Margaret Ann Baker (Maryland)
Ed Berry (Oregon)
Lane Motor Museum (Nashville, TN)
Ed & Marion Gerling Collection

1920's Elgin
Motobike



OVER 150
Bicycle Lamps



Frejus Light Weight



Dalzell Replica



19th c.
Boneshaker



Inkwell. Ex:
Roger Johnson
Collection

Scare Facile
High Wheel
Bicycle



OVER
35
High
Wheels



John S. Freese Tandem



19th c. Wooden
Tricycle

F.W. Read
Original
Illustration
for Life
Magazine



1876 Ariel
High Wheel



56"
Columbia
Expert



10 MILE RIDE

SWAP MEET



C. 1933
Ingo-Bike



Eddy Merckx
Light Weight



Columbia
Chainless

**FRIDAY
OCT. 20**

SWAP MEET: Friday Oct. 20: 6 AM, \$25 Vendor/Free to Public/Food Truck On site - WWW.COPAKEAUCTION.COM

BID ONLINE LIVE WITH **invaluable** (ID# 2438)

31st Annual Bicycle Auction, October 21, 2023 10/21/2023

LOT #

1 Clark Kent Lightweight Bicycle

Clark Kent lightweight road bicycle. Clark Kent pair of wheels and tires (B.F. Goodrich Silvertown, 26 x 1 3/8), seat, pedals, chain ring, crank arms, crank arms. 24" frame. 24 speed. Mavic rims, Brooks saddle, ITM stem and handlebars. Thomson seat post, Campagnolo crank set. No pedals. Good condition. 24" frame. Estimate: 150.00 - 250.00



1a 1902 Steffy Motorcycle

1902 Steffy Motor-bike, New Mail frame with Steffy clip-on motor. Accessories include a "Search Light", carbide head lamp and a New York Standard Watch Company Cyclometer. Expert restoration. Estimate: 20,000.00 - 25,000.00



2 Lambert of England Lightweight Bicycle

Lightweight road bicycle. Model Super Sport, 15 speed, Hand Crafted by Lambert of England. 24" frame. Ideale saddle. Lambert of England accessorized. 24 1/2" frame. Good condition. Estimate: 200.00 - 300.00



2a 1899 Crescent Model 15 Bicycle

1899 Crescent Model 15 Bicycle. Worked on by 7 Michigan wheelmen. 100% proceeds will be donated to St. Jude Children's Hospital.



3 Serotta Lightweight Bicycle

Serotta lightweight bicycle. 24" frame. Dura-Ace crank set. "CLUB SPECIAL" model. Selle Italia saddle. No pedals. Prima 220 handlebars, needs grips. Good condition. Estimate: 150.00 - 200.00



4 Torpado Lightweight Bicycle

Torpado lightweight bicycle. 24" frame. Torpado accessorized. 23" frame. No pedals. Good condition. Estimate: 150.00 - 200.00



4a 1985 Chevrolet El Camino

1985 Chevrolet El Camino. Choo Choo Custom Drivers Series.. Vin 3GCCW80H2FS918592. Runs and drives. State of Nevada title. Roll-up windows, A/T, A/C, Am FM radio with tape deck. 96, 275 miles. SOLD AS IS. Estimate: 500.00 - 1,000.00



5 Schwinn Paramount Tandem Bicycle

Schwinn Paramount tandem bicycle. Avocet saddles. Campagnolo crank sets. Good condition. Estimate: 200.00 - 400.00



5a Humber Bicycle Catalog

Humber & Co. bicycle catalog. London. Good condition. Ed Berry Collection. Estimate: 50.00 - 75.00



31st Annual Bicycle Auction, October 21, 2023 10/21/2023**LOT #****6 Ceramic Frogs on High Wheel Bicycles Sculpture**

Ceramic frogs on high wheel bicycles sculpture. 9" x 4" x 10". Good condition. Estimate: 150.00 - 200.00

**7 Inkwell with Safety Rider**

Early marble and brass inkwell with Safety rider. 10" x 5" x 11 1/2". Provenance: Jim Carpenter Collection. Estimate: 200.00 - 300.00

**8 King High Wheel Bicycle**

C. 1880's King high wheel bicycle. Ames Mfg. Co., Chicopee Mass.. 48". Needs restoration. Scarce example. Estimate: 2,000.00 - 3,000.00

**9 Star High Wheel Bicycle**

C. 1880's Star high wheel bicycle. Mfg. by H.B. Smith Co., Smithville New Jersey. 48". Star tool bag. No. 2071. Leather straps loose. Good condition. Original unrestored condition except saddle, tires. Provenance: Ed & Marion Gerling Collection. Estimate: 4,000.00 - 6,000.00

**10 Painting: Springfield Bicycle Club**

Painting on tin: "SPRINGFIELD BICYCLE CLUB". In oak frame. 17 1/2" x 23 1/2", overall 23 1/2" x 29 1/4". Good condition. Estimate: 800.00 - 1,200.00

**10a Coventry Bicycle Catalog**

The Coventry Machinists Co. bicycle catalog. 1890. Good condition. Ed Berry Collection. Estimate: 50.00 - 75.00

**11 Original 1897 Chicago Cycle Exhibition Artwork**

Original watercolor "SECOND NATIONAL CYCLE EXHIBITION CHICAGO January 23 to 30 1897. Features a figure on a safety bicycle. Oak frame. Sight 18" x 11 3/4", overall 31" x 23 1/2". Good condition. Estimate: 800.00 - 1,200.00

**12 Framed Bicycle Ribbons**

Triple framed early bicycle ribbons including Wheelmen. Nice display. Center section 24" x 30", side sections 24" x 15". Good condition. Ed & Marion Gerling Collection. Estimate: 300.00 - 400.00

**13 Narragansett Trainer & Lap Recorder**

Narragansett home trainer (Providence Rhode Island), with rare lap recorder. Good condition. Estimate: 800.00 - 1,200.00

**14 Hard Tire Safety Bicycle Lamp**

Radiant hard tire safety bicycle lamp. 6" Ht.. Good condition. Estimate: 400.00 - 500.00

**15 56" Columbia Expert High Wheel Bicycle**

56" Columbia Expert high wheel bicycle. Nice rideable condition. Estimate: 1,500.00 - 2,000.00

**15a The Nottingham Tricycle Co. Catalog**

The Nottingham Tricycle Co. bicycle catalog. 1883. Good condition. Ed Berry Collection. Estimate: 50.00 - 75.00

**16 HHC Kangaroo Dwarf Safety Bicycle**

C. 1880's Kangaroo dwarf safety bicycle. 38" front wheel. Motion drive front wheel by lever and cranks. Original condition. Hillman, Herbert & Cooper of Coventry



31st Annual Bicycle Auction, October 21, 2023 10/21/2023

(Premier Works). Margaret Anne Baker Collection. Estimate: 4,000.00 - 6,000.00

17 Singer Hard Tire Safety Bicycle

C. 1890 Singer hard tire safety bicycle. 30". Superbe saddle. Serial number 69515. Original condition. Original label rear fender. Provenance: Ed & Marion Gerling Collection. Bruck Collection, Chicago Ill.. Best of Show Award Wheelmen Annual Meet. Estimate: 3,000.00 - 4,000.00



18 Victor Spring Fork Hard Tire Safety

19th Century Victor spring fork hard tire safety. Split frame. Retains brakes. Good condition. Margaret Anne Baker Collection. Estimate: 4,000.00 - 5,000.00



19 Safety Bicycle Inkwell with Bell

Rare 19th c. cast metal inkwell with bell. Features man posing with safety bicycle. 9 1/2" x 9" x 7 1/2" Ht.. Good condition. Ed Berry Collection. Estimate: 300.00 - 500.00



20 E. Lafont, Bronze of Safety Rider

Early bronze of rider with safety bicycle. Comes with wooden base (detached). Signed E. Lafont (possibly Emile Rene Lafont (1853-1917). 12" W., 13" Ht.. Good condition. Estimate: 300.00 - 400.00



20a Columbia Bicycles Catalog

1886 Columbia Bicycles catalog. Fair condition. Ed Berry Collection. Estimate: 50.00 - 75.00



21 C. 1891 Child's Hard Tire Safety Bicycle

C. 1891 child's hard tire safety bicycle. 24". Good restored condition. Provenance: Ed & Marion Gerling Collection. Restored by Gary Woodward, new saddle, wheels, tire, chain guard. Estimate: 800.00 - 1,200.00



22 Rare Bamboo Pneumatic Safety Bicycle

Rare 1898 Bamboo pneumatic safety bicycle. Labeled "THE BAMBOO / BAMBOO CYCLE CO. / NEW YORK". 24" frame. Has a Standard Watch Co. cyclometer. Comes with custom stand. Note has a Handy Automatic Brake and paperwork included for brake. Very interesting rare tilting saddle. Good condition. Ed Berry Collection. Estimate: 5,000.00 - 7,000.00



23 Hard Tire Safety with Oldest Known Derailleur

Hard tire safety with oldest known Derailleur. Very scarce example. 22" frame. Good condition. Ed Berry Collection. Comes with printout from "100 Years Ago" with info featuring Ed Berry Sr. and Ron Shepherd posed with the bicycle. Needs rust cleaning on some nickel parts. Comes with custom stand. Provenance: Belonged to President of the Manhattan Bicycle Club, believed to have been purchased at the 1892 New York Bicycle Show. Estimate: 4,000.00 - 6,000.00



24 1886 Rudge Bicyclette Hard Tire Safety Bicycle

1886 Rudge Bicyclette hard tire safety bicycle. 19" frame. Good condition. Needs rust cleaning on some nickel parts. Ed Berry Collection. Comes with custom stand. Rare early style, sold by WW Stahl, believed to be among the first diamond style frame bicycles imported in the United States. Estimate: 4,000.00 - 6,000.00



31st Annual Bicycle Auction, October 21, 2023 10/21/2023**LOT #****25 1876 Ariel High Wheel Bicycle**

1876 Ariel high wheel bicycle. 54", good restored condition. Comes with custom stand. Very scarce example. Ed Berry Collection. Comes with brass Ariel medal. Estimate: 5,000.00 - 7,000.00

**25a American Cycles Catalog**

1887 American Cycles bicycle catalog. Gormully & Jeffery. Good condition. Ed Berry Collection. Estimate: 50.00 - 75.00

**26 Dalzell Replica Bicycle**

Dalzell replica bicycle. World's oldest bicycle. Comes with custom stand. Good condition. Ed Berry Collection. Made by Ed Berry Sr. a renowned craftsman and die maker, according to Ed Jr. its a good rider! Estimate: 3,000.00 - 4,000.00

**26a Cheyenne Bicycle Club Trophy**

1886 trophy "To Mr. & Mrs. Pitt Covert By Cheyenne Bicycle Club June-1886. 10 1/2" Ht., along with Cheyenne Bicycle club invitation. Fair condition. Ed Berry Collection. Estimate: 50.00 - 75.00

**27 C. 1886 Pony Star Serial Number One**

1886 Pony Star. Serial number one. Rare green paint. 42". Good condition. "Pony" star high wheel safety, patented by George Pressey of Hammonton NJ, produced by H.B. Smith Machine Co. Smithville NJ.. Ed Berry Collection. Comes with custom stand. Believed to have been painted green and sold by WW Stahl. Believed to be the rarest Star known. Estimate: 7,000.00 - 10,000.00

**27a Bronze Star Statue**

Bronze handmade Star bicycle statue on marble base (plaque marked "A Star Debut"), 16" x 7" x 26" Ht.. Along with medallion. Good condition. Ed Berry Collection. Estimate: 400.00 - 600.00

**28 19th c. Boneshaker Bicycle**

19th c. boneshaker. Possibly the 1st interchangeable parts bicycle. Elaborate casting, two way adjustable saddle, two part cast hub. Good restored condition. Ed Berry Collection. Estimate: 4,000.00 - 6,000.00

**29 1884 Columbia High Wheel Bicycle**

1884 Columbia high wheel bicycle. Ed Berry used this bicycle to ride cross country (replicating the famous 1886 Thomas Stevens ride). Comes with article on the 3400 ride "San Francisco to Boston for Cleaner Air". Comes with custom stand. Ed Berry Collection. Also included are two plaques. Estimate: 3,000.00 - 5,000.00

**29a Century Run Showcase Lot**

Century Run showcase lot. Great and unique display. Good condition. Case measures 18" x 24" x 2". Along with some loose Century items. Ed Berry Collection. Estimate: 200.00 - 400.00

**30 C. 1894 Cross Frame Hard Tire Safety Bicycle**

C. 1894 Cross Frame hard tire safety bicycle. 30". Good restored condition. Provenance: Ed & Marion Gerling Collection. Estimate: 3,000.00 - 4,000.00

**30a Fairfield Bicycle Catalog**

1881 Fairfield Bicycle catalog. Along with letter. Fair condition. Ed Berry Collection. Estimate: 50.00 - 75.00



31st Annual Bicycle Auction, October 21, 2023 10/21/2023

31 Star High Wheel Bicycle

C. 1880's Star high wheel bicycle. Patented by George Pressey of Hammonton, NJ, manufactured by The H.B. Smith Machine Co., Smithville, Burlington County N.J.. 46". Good condition. Margaret Ann Baker Collection. Estimate: 4,000.00 - 6,000.00



32 Frankonia Bicycle Candle Lamp

Scarce Frankonia bicycle candle lamp. First time offered by Copake Auction. 8" Ht.. Good condition. Ed Berry Collection. Estimate: 150.00 - 200.00



32a Safety Bicycle Center Dish

C. 1900 cast metal Safety bicycle dish with ruffled glass. 12" D., 15" Ht.. Good condition. Ed Berry Collection. Estimate: 150.00 - 200.00



33 Rare High Wheel Bicycle Inkwell

Rare high wheel bicycle inkwell. Ex: Roger Johnson Collection. 15 1/2" x 6 1/2" x 8 1/2". Marked R. Richardson Cornwall Works Sheffield 2405. Comes with Roger Johnson Wheelmen membership card and medallion. Good condition. Ed Berry Collection. Estimate: 800.00 - 1,200.00



34 Keats Bugle

Scarce Keats & Sons bugle. Has 1881 first prize medal. Marked "The Buglet Prize Medal 4 Turns". 7" Ht.. Good condition. Ed Berry Collection. Estimate: 300.00 - 500.00



35 Invincible Tricycle Light

Invincible tricycle light. 7" Ht.. Good condition. Ed Berry Collection. Estimate: 300.00 - 400.00



35a Union Cycle Co. Catalog

1890 Union Cycle Catalog. Fair condition. Ed Berry Collection. Estimate: 50.00 - 75.00



36 Columbia Hub Lamp

Scarce Columbia hub lamp "COLUMBIA LAMP MADE BY THE POPE MFG. CO. BOSTON". 8" Ht.. Good condition. Ed Berry Collection. Estimate: 300.00 - 500.00



37 Pair 19th c. Porcelain Vases

Pair of 19th c. porcelain vases with figures on velocipedes. 9 1/2" Ht.. Good condition. Ed Berry Collection. Estimate: 200.00 - 400.00



38 C. 1870's Velocipede Toy

C. 1870 Stevens Brown girl velocipede toy. Retains key. Good condition. Ed Berry Collection. Estimate: 500.00 - 700.00



39 Mantel Clock with Safety Rider

19th c. mantel clock with safety rider. 8" x 4" x 16" . Good condition. Ed Berry Collection. Estimate: 200.00 - 300.00



40 Velocipede Labeled Tobacco Firkin

Rare 19th c. "VELOCIPED TOBACCO" firkin with label. 12" D., 13" Ht.. Ed Berry Collection. Estimate: 300.00 - 500.00



40a Indiana Bicycle Co. Catalog Lot

1893 Indiana Bicycle Co. catalog. Along with Smalleys 1893 catalog and 1893 Wh.H. Wilhelm catalog. Good condition. Ed Berry Collection. Estimate: 50.00 - 75.00



31st Annual Bicycle Auction, October 21, 2023 10/21/2023**LOT #****41 C. 1889 Columbia Hard Tire Safety Bicycle**

C. 1889 Columbia hard tire safety bicycle.
28". Badged on down tube. Features a bell.
Good condition.



Bruck Collection, Chicago Ill.. Provenance:
Ed & Marion Gerling Collection. Estimate:
1,500.00 - 2,000.00

42 High Wheel Desk Bell

Rare cast metal high wheel desk bell. 7" W.,
6 1/2" Ht.. Good condition. Ed Berry
Collection. Estimate: 200.00 - 400.00

**43 Silverplate High Wheel Trophy**

Early silverplate high wheel trophy. 14" Ht..
Marked Meriden B. Company 500. Good
condition. Ed Berry Collection. Estimate:
300.00 - 400.00

**44 Velocipede Cigar Holder**

Scarce silverplate (possibly sterling),
velocipede cigar holder. 7 1/2" L., 4 1/2"
Ht.. Good condition. Ed Berry Collection.
Estimate: 200.00 - 400.00

**44a Wheelmen's Gazette Volume III**

Wheelmen's Gazette Volume III. Fair
condition. Ed Berry Collection. Estimate:
75.00 - 100.00

**45 Bronze Safety Clock & Barometer**

Bronze safety rider on marble base clock &
barometer. Front labeled "PECKHAM
RAMBLERS RS.C.C. 5 Mile Handicap
WON BY T. BOUTLE 1899". 7 1/2" W., 7"
Ht.. Good condition. Clock doesn't operate.
Ed Berry Collection. Estimate: 200.00 -
300.00

**45a Imperial Bicycle Catalog Lot**

Lot including Imperial Bicycle catalog, 1893
Eclipse catalog, 1893 DS Special catalog.
Good condition. Ed Berry Collection.
Estimate: 50.00 - 75.00

**46 Stanley Cycling Club Trophy**

Early sterling silver Stanley Cycling Club
trophy. Won by A.F. Ilsley (10 Mile Bicycle
Championship), 13 1/2" Ht.. Comes with
cigarette cards featuring Stanley Cycling
Club and A.F. Illesley. Note misspelling on
trophy. Scarce trophy. Good condition. Ed
Berry Collection. Estimate: 400.00 - 600.00

**47 Columbia Hub Lamp**

Columbia hub lamp "COLUMBIA LAMP
MADE BY POPE MFG. CO. BOSTON". 7
3/4" Ht.. Good condition. Ed Berry
Collection. Estimate: 300.00 - 400.00

**48 Dearlove's Comet Hub Lamp**

Hub lamp "DEARLOVE'S COMET". 6 1/2"
Ht.. Good condition. Ed Berry Collection.
Estimate: 300.00 - 400.00

**49 High Wheel Barometer**

Early bronze high wheel barometer. 8" Ht..
Good condition. Ed Berry Collection.
Estimate: 200.00 - 300.00

**50 High Wheel Medal Display**

Custom made high wheel medal display.
(24) medals. Cast brass top. Wonderful
display. 19 1/2" Ht.. Good condition. Ed
Berry Collection. Estimate: 300.00 - 500.00



31st Annual Bicycle Auction, October 21, 2023 10/21/2023**LOT #****50a Sterling Cycles Catalog Lot**

Lot including Sterling Cycles catalog (Stokes. Mnfg. Co. Chicago), along with Stover Bicycle Mfg. Co.. Good condition. Ed Berry Collection. Estimate: 50.00 - 75.00

**51 Star High Wheel Bicycle**

C. 1880's Star high wheel bicycle. Mfg. by H.B. Smith Co., Smithville New Jersey. 48". James Hetzer Collection New Hampshire. Good condition. Estimate: 4,000.00 - 6,000.00

**52 Cast Safety Rider Statue**

Early cast safety rider statue. 7" W., 8" Ht.. Good condition. Ed Berry Collection. Estimate: 150.00 - 200.00

**53 C. 1892 Eagle High Wheel Bicycle**

C. 1892 Eagle high wheel bicycle. Patented by the L.B. Gaylor of Stamford CT in 1886. 50". Retains badge. Good condition. Restored by Gary Woodward, originally from St. Louis, MO.. Provenance: Ed & Marion Gerling Collection. Estimate: 5,000.00 - 7,000.00

**54 Large Bronze High Wheel Figure**

Large bronze high wheel figure. 26" Ht.. Good condition. Ed Berry Collection. Estimate: 200.00 - 400.00

**55 Ceramic High Wheel Plaque**

Early ceramic high wheel plaque. Rider on metal high wheel. 15" D.. Imperfections. Ed Berry Collection. Estimate: 200.00 - 300.00

**55a Sylph Bicycle Catalog Lot**

Lot (2) Sylph Cycles bicycle catalogs. One marked 1893. Fair condition. Ed Berry Collection. Estimate: 50.00 - 75.00

**56 Bronze Statue of Woman with Safety Bicycle**

Early bronze statue of woman with safety bicycle. Signed L. Raphael. 17" Ht.. Good condition. Ed Berry Collection. Estimate: 300.00 - 400.00

**57 F.W. Read Original Illustration for Life Magazine**

F.W. Read original watercolor or gouache illustration for Life Magazine (Vol. XXXL April 7, 1898, page 295) "Time Flies No More". Sight 25" x 14", overall 32" x 20". Good condition. Ed Berry Collection. Estimate: 400.00 - 600.00

**58 Rare Columbia Advertising Poster**

Columbia advertising poster "COLUMBIAS POPE MFG. CO....". Great frame job. Overall 26 1/2" x 32". Good condition. Ed Berry Collection. Original advertising piece acquired from the Bassett collection (gave original hobby horse to Smithsonian) in the 1970's. One of the rarest Thomas Stevens' advertising pieces. Estimate: 300.00 - 400.00

**59 19th c. Silhouette Man with Boneshaker**

19th c. silhouette of a gentleman with a boneshaker bicycle. Birdseye maple frame. Scarce image. Sight 8" x 5". Good condition. Ed Berry Collection. Estimate: 200.00 - 300.00

**59a Indian Tribute Bicycle**

Indian Tribute bicycle. Balloon tire, signed on rear fender "Fabrication Artwork No. 5 of ? 5, 27. 97, Last Black Ind. 1 Yr. Tony A. Napoli". Restored, paint has blemishes. Estimate: 800.00 - 1,200.00



31st Annual Bicycle Auction, October 21, 2023 10/21/2023

60 C. 1880's Columbia High Wheel Bicycle

C. 1880's Columbia Expert bicycle. 54". Retains dust badge. Comes with a Butcher Cyclometer. Provenance: Ed & Marion Gerling Collection. Estimate: 3,000.00 - 5,000.00



65 19th c. Cast Iron Mile Marker

19th c. cast iron winged wheel mile marker. 22" W. x 18". Good condition. Ed Berry Collection. Estimate: 200.00 - 300.00



60a The Relay Bicycle Catalog Lot

Lot including 1893 The Relay Mfg. Co. bicycle catalog and Vincent Cycle Mfg. Co.. Fair condition. Ed Berry Collection. Estimate: 50.00 - 75.00



65a Cleveland Safety Catalog Lot

Lot including Cleveland Safety Bicycles catalog, Catalog of American Wheels (St. Nicholas Mfg. Co.). Fair condition. Ed Berry Collection. Estimate: 50.00 - 75.00



61 John S. Freese Tandem Bicycle

Pneumatic safety John S. Freese Brooklyn N.Y. tandem bicycle. First time offered by Copake Auction. Good condition. Some dings to frame. Very scarce example. Collection of Margaret Ann Baker. Estimate: 3,000.00 - 5,000.00



66 19th c. Painting of High Wheel Rider

19th c. painting of a high wheel rider. Oil on canvas. 15" x 18", overall 20 1/2" x 13 1/2". Along with book "Wheels Songs" (S. Conant Foster), has illustration that inspired the artwork. Good condition. Estimate: 400.00 - 600.00



62 Pair of Porcelain Vases with Safety Riders

Pair of 19th c. porcelain vases with male and female safety riders. 13 1/4" Ht.. Good condition. Ed Berry Collection. Estimate: 200.00 - 400.00



67 Safety Hub Cyclometer

Safety hub Alarm cyclometer. A.G. Spalding Bros. New York, Chicago, Phil.. 5 1/2" L.. Good condition. Ed Berry Collection. Estimate: 200.00 - 300.00



63 Pair of Early Statues Signed Lavergne

Pair of early statues of man and woman with hard tire safety handlebars. 12" Ht.. Signed "Lavergne". Probably Adolphe Jean Lavergne (France 1852-1901). Good condition. Estimate: 300.00 - 400.00



68 High Wheel THE "AUTOMATIC" ALARM

High wheel THE "AUTOMATIC" ALARM. Hill & Tolman Worcester Mass.. Continuous ringer. Good condition. Ed Berry Collection. Estimate: 200.00 - 300.00



64 Cast Metal Clock with High Wheel Rider

Early cast metal clock with high wheel rider. Signed "GR". 14" W., 10 3/4" Ht.. Wood base has crack. Clock face has line, bent hands, otherwise good shape. Ex: Henry Mathis Collection. Ed Berry Collection. Estimate: 150.00 - 250.00



69 Hard Tire Safety Signal Cyclometer

Hard tire safety signal cyclometer (Boys & Ruckers). Glass cracked, otherwise good condition. Ed Berry Collection. Estimate: 200.00 - 300.00



31st Annual Bicycle Auction, October 21, 2023 10/21/2023**LOT #****70 Hard Tire Safety Cyclometer**

Hard tire safety cyclometer. Butcher Cyclometer Boston. 6" L.. Good condition. Ed Berry Collection. Estimate: 200.00 - 300.00

**70a The Royal Cycle Works Catalog Lot**

Lot including The Royal Cycle Works and New Mail. Good condition. Ed Berry Collection. Estimate: 50.00 - 75.00

**71 Elliot Hickory Pneumatic Safety Bicycle**

C. 1898 Elliot Hickory pneumatic safety bicycle. Retains badge. 24". Good condition. Made in Framingham Mass.. Provenance: Ed & Marion Gerling Collection. Original nickel plating, restored by Martin Potts. Estimate: 1,500.00 - 2,000.00

**72 Hard Tire Safety Cyclometer**

Hard tire safety chiming cyclometer "THE SIGNAL CYCLOMETER". 4" L.. Good condition. Ed Berry Collection. Estimate: 200.00 - 300.00

**73 Racing Pinbacks**

Lot (7) bicycle racing pinbacks and medal. Includes Miss Annis Burr Porter, Eddy Bald etc.. Case included. Ed Berry Collection. Estimate: 50.00 - 75.00

**74 English Bicycle Medals**

Collection of (6) English bicycle medals. Case included. Good condition. Ed Berry Collection. Estimate: 50.00 - 75.00

**75 Showcase Lot**

Showcase lot including pocket knives, medals, brass matchesafes, compass etc.. Case included. Good condition. Ed Berry Collection. Estimate: 75.00 - 100.00

**75a Indiana Bicycle Catalog Lot**

Lot including Indiana Bicycle Catalog, Union Cycle catalog. Good condition. Ed Berry Collection. Estimate: 50.00 - 75.00

**76 Pinbacks Lot**

Lot (16) tire related pinbacks. Case included. Good condition. Ed Berry Collection. Estimate: 50.00 - 75.00

**77 Velocipede Buttons Lot**

Lot (12) velocipede related buttons. Good condition. Case included. Ed Berry Collection. Estimate: 50.00 - 75.00

**77a Four Volumes of The Wheelmen**

Lot (4) Volumes of The Wheelmen (2) 1883, (2) 1884. Two recovered. Ed Berry Collection. Estimate: 50.00 - 100.00

**78 Bicycle Ribbons**

Lot (2) early ribbons with celluloid buttons. Good condition. Ed Berry Collection. Estimate: 50.00 - 75.00

**79 Matchesafes with Safety Riders**

Lot (2) early bicycle matchesafes with safety riders. Good condition. Case included. Ed Berry Collection. Estimate: 50.00 - 75.00



31st Annual Bicycle Auction, October 21, 2023 10/21/2023**LOT #****80 50" High Wheel Bicycle**

50" high wheel bicycle. Possibly a Bayliss Thomas. Good condition. James Hetzer Collection New Hampshire. Estimate: 1,500.00 - 2,000.00

**85 Gormully & Jeffery High Wheel Bicycle**

C. 1880's Gormully & Jeffery child's high wheel bicycle. Retains dust shield. 44". Older restoration. James Hetzer Collection New Hampshire. Estimate: 1,000.00 - 1,500.00

**80a Ariel Bicycle Catalog Lot**

Lot including 1892 Ariel Cycle Manufacturing catalog and 1892 Credenda Bicycles. Fair condition. Ed Berry Collection. Estimate: 50.00 - 75.00

**85a The Greyhound Safety Catalog Lot**

Lot including The Greyhound Safety bicycle catalog and A Scientific Research On Bicycle Construction. Good condition. Ed Berry Collection. Estimate: 50.00 - 75.00

**81 Search Light Showcase Lot**

Search Light showcase lot including hang tag, brass pin, Dietz button. Case included. Ed Berry Collection. Estimate: 25.00 - 50.00

**86 Rudge Bicyclette Pin**

Early Rudge Bicyclette pin. Good condition. Case included. Ed Berry Collection. Estimate: 50.00 - 75.00

**82 Pinbacks Lot**

Lot (20) bicycle pinbacks. Includes Sylph, Telegraph, Monarch, High Grade etc.. Case included. Good condition. Ed Berry Collection. Estimate: 50.00 - 75.00

**87 John Beale Facile Medal**

John Beale medal in fitted case. Designer of the Facile. Royal Cornwall Polytechnic Society Instituted 1833 Second Class. Good condition. Ed Berry Collection. Estimate: 50.00 - 100.00

**83 Tricycle Medals**

Lot (2) early tricycle medals. Includes Lebanon Wheelmen and two track tricycle. Good condition. Ed Berry Collection. Estimate: 50.00 - 75.00

**88 Mile a Minute Murphy Medals**

Two Mile a Minute Murphy medals. Good condition. Ed Berry Collection. Estimate: 50.00 - 75.00

**84 Bicycle Medal & Photograph Lot**

Lot including bicycle medal and photograph of rider wearing medal. Good condition. Ed Berry Collection. Estimate: 50.00 - 75.00

**89 Pneumatic Safety Bicycle**

Pneumatic safety bicycle with unusual sprung rear. Scarce example. 22" frame. Needs tires, saddle rough. Margaret Anne Baker Collection. Estimate: 2,000.00 - 3,000.00



31st Annual Bicycle Auction, October 21, 2023 10/21/2023**LOT #****90 Bayliss Thomas High Wheel Bicycle**

52" Bayliss Thomas high wheel bicycle.

Barn find condition. James Hetzer

Collection New Hampshire. Estimate: 800.00

- 1,200.00

**90a Clipper Catalog Lot**

Lot including 1893 Clipper Safeties bicycle catalog and Letters Of Interest To All

Wheelmen Present And Prospective (1885).

Fair condition. Ed Berry Collection.

Estimate: 50.00 - 75.00

**91 Gormully & Jeffery Two Track Tricycle**

Gormully & Jeffery child's 30" two track

tricycle. New rubber and leather, repro

wheelie bar, otherwise original unrestored

original condition. Original decals and

striping visible. James Hetzer Collection

New Hampshire. Estimate: 1,500.00 - 2,500.00

**92 Rex Pneumatic Safety Bicycle**

Rare C. 1898 Rex pneumatic safety, Rex

Cycle Co. Chicago Ill, patent by Bohn C.

Hicks in 1896. Barn find condition. Rare

example. Estimate: 3,000.00 - 4,000.00

**93 Columbia Chainless Pneumatic Safety Bicycle**

Columbia pneumatic safety bicycle. 22"

frame. Nicely restored condition. Margaret

Anne Baker Collection. Estimate: 800.00 -

1,200.00

**94 Hard Tire Safety Bicycle**

Hard tire safety bicycle. Labeled with star

design. Original condition. 18" frame.

Margaret Anne Baker Collection. Estimate:

500.00 - 700.00

**95 Racycle Pneumatic Safety Bicycle**

Racycle pneumatic safety bicycle with a

13" sprocket. Badged "THE RACYCLE

SELF-OILER...". Barn find condition.

Margaret Anne Baker Collection. Estimate:

800.00 - 1,200.00

**95a H.B. Smith & Albert Pope Letters**

Lot including H.B. Smith signed letter and

Albert Pope signed letter. Good condition.

Ed Berry Collection. Estimate: 50.00 - 75.00

**96 Bicycle Pinbacks**

Collection of (77) early bicycle pinbacks.

Includes The Fowler, Zenith, Keating, The

Lincoln, The White, The Puritan, The

Reindeer etc.. Good condition. Case

included. Ed Berry Collection. Estimate:

150.00 - 200.00

**97 Bicycle Souvenir Spoons**

Collection of (16) early bicycle spoons.

Includes Hudson Cycle Club, Clipper,

Orient, Columbia etc.. Good condition. Case

included. Ed Berry Collection. Estimate:

50.00 - 75.00

**98 High Wheel Medallions**

Lot (11) early High Wheel medallions. Good

condition. Ed Berry Collection. Estimate:

75.00 - 100.00

**99 Road Race Ribbons**

Lot (3) early road race ribbons. (2) 1895, the

other 1897. Case included. Ed Berry

Collection. Estimate: 40.00 - 60.00



31st Annual Bicycle Auction, October 21, 2023 10/21/2023

LOT #

99a Book Radlerei!

Book: Radlerei! (Wien-Gerlach & Schenk).
Good condition. Ed Berry Collection.
Estimate: 50.00 - 75.00



100 Winged Wheel Pins

Collection of (7) winged wheel club pins.
Includes "First Tricycle Race in America",
Wheaton, Illinois etc.. Case included. Ed
Berry Collection. Estimate: 75.00 - 100.00



100a Cycling And Their Work Artists Booklet

Cycling And Their Work Artists catalog.
Fair condition. Ed Berry Collection.
Estimate: 25.00 - 50.00



101 Gormully & Jeffery High Wheel Bicycle

C. 1891 Gormully & Jeffery Light Champion
high wheel bicycle. Repro handlebars,
newer grips, missing brake hardware, new
rubber and leather, new spokes. James
Hetzer Collection New Hampshire. Estimate:
1,000.00 - 1,500.00



101a Two Volumes of Cycle And Motor World

Two Volumes of Cycle And Motor World.
Good condition. Ed Berry Collection.
Estimate: 150.00 - 200.00



102 Star Safety High Wheel Bicycle

C. 1888 Star high wheel safety bicycle
patented by George Pressey of
Hammononton, NJ, manufactured by The H.B.
Smith Machine Co., Smithville, Burlington
County NJ.. 48". Barn find condition.
Estimate: 2,000.00 - 3,000.00



102a Book: Modern Cycles

Book: Modern Cycles (A.J. Wallis-Taylor,
C.E., London 1897). Good condition. Ed
Berry Collection. Estimate: 50.00 - 75.00



103 CCM Lightweight Bicycle

CCM lightweight road bicycle. 21" frame.
Fair condition. Estimate: 100.00 - 200.00



104 1970's Swing Bicycle

1970's Swing bicycle. Fair condition.
Estimate: 100.00 - 200.00



105 Schwinn American Bicycle

Schwinn American bicycle. 19" frame. Fair
condition. Estimate: 50.00 - 75.00



105a Ephemera Lot

Lot including Minstrels Under The
Auspices Of The L.A.W. May 28th 1886
pamphlet and Springfield Bicycle Club
pamphlet. Fair condition. Ed Berry
Collection. Estimate: 50.00 - 75.00



106 Schwinn Jaguar Mark III

1950's Schwinn Jaguar Mark II. 20" frame.
Fair condition. Estimate: 100.00 - 200.00



107 Schwinn Hornet

1950's Schwinn Hornet. 20" frame. Fair
condition. Estimate: 100.00 - 200.00



108 Hetchins Lightweight Bicycle

C. 1963 Hetchins Lightweight road bicycle.
54Cm. Fair condition. Estimate: 300.00 -
400.00



31st Annual Bicycle Auction, October 21, 2023 10/21/2023

109 Victor Hard Tire Safety Bicycle

Victor hard tire safety bicycle. Cross frame. Barn find condition. Ed & Marion Gerling Collection. Estimate: 1,500.00 - 2,500.00



113 Spalding Pneumatic Safety Bicycle

Spalding pneumatic safety bicycle. 24" frame. Good condition. Collection of Margaret Ann Baker. Estimate: 500.00 - 600.00



109a E.J. Berry & Son Sign and Brackets

E.J. Berry & Son "THE OLD SPOKE HOME 1963" sign (17" x 13"), and two cast iron brackets with high wheel riders (12 1/2" W., 19" Ht.), good condition. Ed Berry Collection. Estimate: 50.00 - 100.00



114 Columbia High Wheel Bicycle

Columbia high wheel bicycle. 54". Nice restoration, good condition. Collection of Margaret Ann Baker. Estimate: 1,500.00 - 2,000.00



110 Atala Lightweight Bicycle

C. 1960's Atala Lightweight road bicycle. 58Cm. Fair condition. Estimate: 75.00 - 100.00



114a Book The World Awheel

Book: The World Awheel (Illustrated By Eugene Grivaz). 1911. Fair condition. Ed Berry Collection. Estimate: 50.00 - 75.00



110a Annual Meet Pennsylvania Division L.A.W. Pamphlet

1890 Annual Meet Pennsylvania Division L.A.W. pamphlet. Fair condition. Ed Berry Collection. Estimate: 50.00 - 75.00



115 Columbia 50" High Wheel Bicycle

Columbia 50" high wheel bicycle. Barn find condition. Retains dust badge. Needs tire. Estimate: 800.00 - 1,200.00



111 Monark Balloon Tire Bicycle

C. 1940's Monark Super Cruiser balloon tire bicycle. 19" frame. Front light, rear rack, springer front end. Good condition. Estimate: 400.00 - 500.00



115a Ephemera Lot

Lot including Over The Alps By Mrs. Pennell pamphlet and 500 Miles in France on Bicycles booklet. Fair condition. Ed Berry Collection. Estimate: 50.00 - 75.00



112 Columbia Model 50 Chainless Bicycle

Columbia Model 50 pneumatic chainless bicycle. Wooden rims. Needs saddle covering, grips, tires. 26" frame. Barn find condition. Estimate: 800.00 - 1,200.00



116 Overland Pneumatic Safety Bicycle

Overland pneumatic safety bicycle. Wooden spoked wheels. 21" frame. Barn find condition. Estimate: 500.00 - 700.00



112a L.A.W. Bulletin and Good Road Books

Two early L.A.W. Bulletin and Good Road Books. VOL. XXIII and VOL. XXI. Fair-Good condition. Ed Berry Collection. Estimate: 150.00 - 200.00



116a Photograph of High Wheel Racer

Early photograph of Penna. racer with high wheel "Henry Frey" (Hyde Park, Pa.). 16 3/4" x 10 1/4". Some edge loss. Ed Berry Collection. Estimate: 100.00 - 150.00



31st Annual Bicycle Auction, October 21, 2023 10/21/2023

117 1941 Shelby Balloon Tire Bicycle

1941 Shelby balloon tire bicycle. 18" frame. Original condition, some wear. Estimate: 300.00 - 400.00



121 Guerciotti Lightweight Bicycle

Guerciotti lightweight road bicycle. Guerciotti equipped. Mavic rims. San Marco Rolls saddle. Good condition. No pedals. Provenance: Lane Motor Museum, Nashville TN.. 22" frame. Estimate: 200.00 - 300.00



118 1920's Elgin Motobike

1920's Elgin tank Motobike. Nice original condition. 20" frame. Estimate: 500.00 - 600.00



122 Cinelli Lightweight Bicycle

Cinelli lightweight road bicycle. Selle Italia saddle. Aeromax rims, Campagnolo Record crank set. 22" frame. Good condition. No pedals. Provenance: Lane Motor Museum, Nashville TN.. Estimate: 400.00 - 600.00



118a Book Lot

Lot (4) bound volumes of catalogs including Copake Auction, Phillips, Phillips & Schwinn, Sotheby's. Good condition. Ed Berry Collection. Estimate: 50.00 - 100.00



123 Moulton Bicycle

Moulton bicycle. Air Wing Profile Design handlebars, PUSH seat post, Serfas saddle, Shimano Ultegra crank set. Good condition. Provenance: Lane Motor Museum, Nashville TN.. Estimate: 300.00 - 400.00



119 Columbia Expert High Wheel Bicycle

Columbia Expert high wheel bicycle. Missing saddle and brakes. 52". Good condition. Estimate: 1,500.00 - 2,000.00



119a Book: Wobbles' Tour Around The World...

Book: WOBBLES' TOUR Around the World On A Bicycle (E.R. Collins). As found. Ed Berry Collection. Estimate: 25.00 - 50.00



124 Gianni Motta Lightweight Bicycle

Gianna Motta lightweight road bicycle. Good condition. 22" frame. No pedals. Provenance: Lane Motor Museum, Nashville TN.. Estimate: 150.00 - 250.00



120 Singer Hard Tire Safety Bicycle

C. 1890's Singer hard tire safety bicycle. Retains a bell. Good condition. Restored by Ed Gerling, origin Greenville Ill.. Estimate: 1,200.00 - 1,500.00



125 Tommaso Lightweight Bicycle

Tommaso lightweight road bicycle. Selle San Marco saddle, Dura-Ace crank set, Mavic rims. 21 1/2" frame. Good condition. Provenance: Lane Motor Museum, Nashville TN.. Estimate: 150.00 - 200.00



120a Ephemera Lot

Lot including Official Program Illinois Cycling Club 1896 and Official Program The Bicycle Derby 1895. Good condition. Ed Berry Collection. Estimate: 50.00 - 75.00



125a 1884 Tricycling For Ladies Catalog

1884 Tricycling For Ladies By F.J. Erskine catalog. London. Fair condition. Ed Berry Collection. Estimate: 50.00 - 75.00



31st Annual Bicycle Auction, October 21, 2023 10/21/2023**LOT #****126 Eddy Merckx Lightweight Bicycle**

Eddy Merckx Corsa Extra blue lightweight road bicycle. San Marco saddle, Campagnolo crank set. No pedals. 21 1/2" frame. Good condition. Provenance: Lane Motor Museum, Nashville TN.. Estimate: 400.00 - 600.00

**127 Motobecane Lightweight Bicycle**

Motobecane Le Champion lightweight road bicycle. 23" frame. Good condition. Provenance: Lane Motor Museum, Nashville TN.. Estimate: 100.00 - 150.00

**128 Look Bernard Hinault Lightweight Bicycle**

Look Bernard Hinault lightweight road bicycle. Campagnolo crank set. Good condition. No pedals. 21" frame. Provenance: Lane Motor Museum, Nashville TN.. Estimate: 150.00 - 200.00

**129 Ciocc Lightweight Bicycle**

Ciocc lightweight road bicycle. Mavic equipment. Turbo saddle. Good condition. No pedals. Provenance: Lane Motor Museum, Nashville TN.. 22" frame. Estimate: 300.00 - 400.00

**130 Ciocc Lightweight Bicycle**

Ciocc lightweight road bicycle. Campagnolo crank set. Marked CCCP. Good condition. No pedals. Provenance: Lane Motor Museum, Nashville TN.. 22" frame. Estimate: 300.00 - 400.00

**131 Louison Bobet Lightweight Bicycle**

Louison Bobet lightweight road bicycle. 21" frame. Good condition. No pedals. Provenance: Lane Motor Museum, Nashville TN.. Estimate: 300.00 - 400.00

**131a High Wheel Photograph**

Large early photograph, outdoor pose, riders with high wheels. 10 1/4" x 17". Good condition. Ed Berry Collection. Estimate: 150.00 - 200.00

**132 Romani Lightweight Bicycle**

Romani Storck Special lightweight road bicycle. Full Speed Ahead rim, Sapim spokes. Campagnolo crank set. No pedals. 21 1/2" frame. Good condition. Provenance: Lane Motor Museum, Nashville TN.. Estimate: 150.00 - 200.00

**133 Gitane Service Course Lightweight Bicycle**

Gitane Service Course lightweight road bicycle. Brooks saddle. Campagnolo crank set. No pedals. 21 1/2" frame. Good condition. Provenance: Lane Motor Museum, Nashville TN.. Estimate: 150.00 - 200.00

**133a Barber Bottle with Velocipede**

19th c. milk glass barber bottle with velocipede. 6 1/2" Ht.. Good condition. Ed Berry Collection. Estimate: 50.00 - 75.00

**134 Masi Lightweight Bicycle**

Masi lightweight Nuova Strada road bicycle. Mavic rims. Campagnolo crank set. 22" frame. Good condition. Provenance: Lane Motor Museum, Nashville TN.. Estimate: 500.00 - 700.00

**134a Victorian Pin Holder**

Victorian porcelain pin holder. Woman on velocipede. 5" Ht.. Factory imperfection on base, otherwise good condition. Ed Berry Collection. Estimate: 40.00 - 60.00



31st Annual Bicycle Auction, October 21, 2023 10/21/2023

LOT #

135 Gormully & Jeffery High Wheel Bicycle

42" Gormully & Jeffery child's high wheel bicycle. Older restoration. James Hetzer Collection New Hampshire. Estimate: 1,000.00 - 1,500.00



136 3Rensho Lightweight Bicycle

3Rensho "Katana" Japanese lightweight road bicycle. Dura-Ace crank set. Mavic rims. 22" frame. No pedals. Good condition. Provenance: Lane Motor Museum, Nashville TN.. Estimate: 400.00 - 500.00



137 Pinarello Lightweight Bicycle

Pinarello Treviso Italia lightweight road bicycle. Campagnolo crank set. No pedals. 23 1/2" frame. Good condition. Provenance: Lane Motor Museum, Nashville TN.. Estimate: 150.00 - 250.00



138 Legnano Lightweight Bicycle

Legnano lightweight road bicycle. Campagnolo equipped. Fujita Professional saddle. 22" frame. 121 Good condition. No pedals. Provenance: Lane Motor Museum, Nashville TN.. Estimate: 300.00 - 400.00



139 Moser Lightweight Bicycle

Francesco Moser lightweight road bicycle. Campagnolo equipped. No pedals. Good condition. 22" frame. Provenance: Lane Motor Museum, Nashville TN.. Estimate: 300.00 - 400.00



139a Pair Victorian Vases

Pair of Victorian black glass vases with figures on velocipedes. 12 1/2" Ht.. Along with (3) trade cards with same figures. Good condition. Ed Berry Collection. Estimate: 200.00 - 300.00



140 Oschner Lightweight Bicycle

Oschner lightweight road bicycle. Wolber rims. 23 1/2" frame. Good condition. No pedals. Provenance: Lane Motor Museum, Nashville TN.. Estimate: 150.00 - 250.00



140a Safety Oil Lamp

Victorian safety oil lamp with etched cranberry shade (and chimney). Metal base with safety riders. Good condition. 22 1/2" overall Ht.. Ed Berry Collection. Estimate: 150.00 - 200.00



141 Nishiki Lightweight Bicycle

Nishiki lightweight road bicycle. Suntour crank set. 21 1/2" frame. Good condition. Provenance: Lane Motor Museum, Nashville TN.. Estimate: 75.00 - 100.00



142 Moulton Bicycle

Moulton Standard bicycle. Good condition. No pedals. Provenance: Lane Motor Museum, Nashville TN.. Estimate: 300.00 - 400.00



143 1891 52" New Rapid High Wheel

1891 New Rapid high wheel bicycle. 52". Missing some spokes, new leather and tires. James Hetzer Collection New Hampshire. Estimate: 1,000.00 - 1,500.00



143a Three Volumes of Bicycling News

Book lot: Three Volumes of Bicycling News (Vol. 3, 1876, 1877). Fair condition. Ed Berry Collection. Estimate: 75.00 - 100.00



31st Annual Bicycle Auction, October 21, 2023 10/21/2023**LOT #****144 Gianni Motta Lightweight Bicycle**

Gianna Motta lightweight road bicycle. 22 1/2" frame. Good condition. No pedals. Provenance: Lane Motor Museum, Nashville TN.. Estimate: 150.00 - 250.00

**147a Packard Bros. & Co. Driving And Cycling Chart Book**

Book: PACKARD BROS. & CO.'S DRIVING AND CYCLING CHART OF SOUTH EASTERN MASSACHUSETTS 1885. Good condition. Ed Berry Collection. Autographed by Paul White. Estimate: 75.00 - 100.00

**144a Volumes I, II The World On Wheels**

Volumes I, II The World On Wheels (H.O. Duncan). Good condition. Ed Berry Collection. Estimate: 50.00 - 75.00

**148 Frejus Lightweight Bicycle**

Frejus lightweight road bicycle. 22" frame. Campagnolo crank set. Good condition. Estimate: 300.00 - 400.00

**145 Bottecchia Lightweight Bicycle**

Bottecchia lightweight road bicycle. Campagnolo crank set. Campagnolo rims. No pedals. 20 1/2" frame. Good condition. Provenance: Lane Motor Museum, Nashville TN.. Estimate: 500.00 - 700.00

**149 Eddy Merckx Lightweight Bicycle**

Eddy Merckx lightweight road bicycle. Omega Strada rims. Campagnolo crank set. 21 1/2" frame. Good condition. Some imperfections. Estimate: 400.00 - 600.00

**145a 1879 Bicyclist's Handbook**

Book: The "Indispensable" Bicyclist's Handbook And Guide To Bicycling" (1879). Fair condition. Ed Berry Collection. Estimate: 50.00 - 75.00

**150 C. 1880's Child's High Wheel Bicycle**

C. 1880's child's high wheel bicycle. 42". Good condition. James Hetzer Collection New Hampshire. Estimate: 700.00 - 900.00

**146 Moulton Rims and Tires**

Moulton rims and tires. Provenance: Lane Motor Museum, Nashville TN.. Estimate: 50.00 - 75.00

**151 Frejus Bicycle Frame**

Frejus lightweight road bicycle frame. Fair condition. 22" frame. Estimate: 100.00 - 150.00

**147 Bianchi Lightweight Bicycle**

Bianchi lightweight road bicycle. Campagnolo equipped. Bella Italia saddle. Touriste stem. 22" frame. Good condition. Some imperfections. Estimate: 150.00 - 250.00

**152 Frejus Lightweight Bicycle**

Frejus lightweight bicycle. Campagnolo crank set. 22" frame. Fair condition. Estimate: 200.00 - 400.00

**152a Book: Wheels and Wheeling**

Book: Wheels and Wheeling (Porter). Good condition. Ed Berry Collection. Estimate: 40.00 - 60.00



31st Annual Bicycle Auction, October 21, 2023 10/21/2023

153 Eddy Merckx Lightweight Bicycle

Eddy Merckx lightweight road bicycle. Campagnolo crank set. Fair condition. 21 1/2" frame. Estimate: 200.00 - 400.00



159 C. 1880's High Wheel Bicycle

C. 1880's high wheel bicycle. 50". Good condition. Collection of Margaret Ann Baker. Estimate: 800.00 - 1,200.00



154 Colnago Lightweight Bicycle

Colnago lightweight road bicycle. Campagnolo crank set. 23" frame. Fair condition. Estimate: 100.00 - 150.00



159a 19th c. Hobby Horse Print

19th c. hobby horse print "The Hobby Horse Dealer". Unframed. Good condition. 9 1/2" x 13 1/2". Ed Berry Collection. Estimate: 50.00 - 75.00



155 Frejus Lightweight Bicycle

Frejus lightweight road bicycle. Campagnolo crank set. 22 1/2" frame. Fair condition. Estimate: 200.00 - 400.00



160 Columbia Model 81 Chainless Pneumatic Bicycle

Columbia chainless Model 81 pneumatic safety bicycle. 22" frame. Some damage as seen in images. Collection of Margaret Ann Baker. Estimate: 500.00 - 700.00



156 1940's Monark Balloon Tire Bicycle

1940's Monark balloon tire bicycle. 20" frame. Nice original condition. Estimate: 400.00 - 500.00



160a 19th c. Hobby Horse Print

19th c. hobby horse print "Hobbies or Attitude is every Thing....1819". 8 1/2" x 12 1/2". Fair condition. Ed Berry Collection. Estimate: 50.00 - 75.00



157 Mead Ranger Tall Frame Bicycle

C. 1920 Mead Ranger tall frame bicycle. 22" frame. Fair condition. Estimate: 200.00 - 300.00



161 Ingo Bicycle

C. 1933 early model Ingo-Bike. Manufactured by Ingersoll Div. of the Borg Warner Corp.. Older restoration. Collection of Margaret Ann Baker. Estimate: 400.00 - 600.00



158 35" Child's High Wheel Bicycle

35" child's high wheel bicycle. Nice restored condition. Marked "35" on fork. Collection of Margaret Ann Baker. Estimate: 800.00 - 1,200.00



161a 19th c. Hobby Horse Print

19th c. hobby horse print "Johnson's Pedestrian Hobbyhorse Riding School". Fair condition. Unframed. 13" x 15 1/4". Ed Berry Collection. Estimate: 50.00 - 75.00



158a 19th c. Hobby Horse Print

19th c. unframed hobby horse print "Modern Olympics". 11" x 15 1/4". Good condition. Ed Berry Collection. Estimate: 50.00 - 75.00



31st Annual Bicycle Auction, October 21, 2023 10/21/2023

LOT #

162 Crescent Lot

Crescent lot including (4) pinbacks (one Cleveland), and head badge. Case included. Good condition. Ed Berry Collection. Estimate: 50.00 - 75.00



163 Velocipede Buttons

Collection of (9) velocipede buttons. Good condition. Case included. Ed Berry Collection. Estimate: 50.00 - 75.00



164 Bicycle Cigar Cutters

Lot (3) early bicycle cigar cutters. Two high wheels and safety. Good condition. Ed Berry Collection. Case included. Estimate: 50.00 - 75.00



165 Misc. Lot

Lot including C. 1870 porcelain box with boneshaker riders on lid (good condition, 5" W.), and C. 1870 collar box (4" x 4" x 2 1/1", fair condition). Ed Berry Collection. Estimate: 50.00 - 75.00



165a Bicycle Books

Two TOC books: Humors Of Cycling and The Art...of Ease in Cycling. Fair condition. Ed Berry Collection. Estimate: 50.00 - 75.00



166 High Wheel Skirt Lifter

High wheel skirt lifter. Marked "Fyfe's Patent Bicycle Holder". Brass, good condition. Ed Berry Collection. Estimate: 50.00 - 100.00



167 Lamp Pendant & Token

Lot including detailed pendant bicycle lamp and token. Good condition. Case included. Ed Berry Collection. Estimate: 50.00 - 75.00



168 Medals Lot

Lot including 1891 gold tricycle club medal, Bartlett memorial coin, 1890 100 Miles medal, medallion, London medal. Good condition. Case included. Ed Berry Collection. Estimate: 50.00 - 75.00



169 London Bicycle Club Lot

Lot including London Bicycle Club century medal and medallion in fitted case (4" D.). Good condition. Ed Berry Collection. Estimate: 50.00 - 75.00



170 Pierce Lot

Piece bicycle lot including button, pinback and head badge. Good condition. Ed Berry Collection. Estimate: 50.00 - 75.00



171 Trenton Bicycle Cyclometer

Trenton Model C bicycle cyclometer in original box. Good condition. Ed Berry Collection. Estimate: 75.00 - 100.00



172 Columbia Cyclometer

Columbia Special cyclometer in original box. Good condition. Ed Berry Collection. Estimate: 75.00 - 100.00



173 Standard Cyclometer

Standard Cyclometer in original box. Good condition. Ed Berry Collection. Estimate: 75.00 - 100.00



31st Annual Bicycle Auction, October 21, 2023 10/21/2023**LOT #****174 English Medals**

Lot (3) early cased English medals. Good condition. Ed Berry Collection. Estimate: 50.00 - 75.00

**175 Cambridge Bicycle Medals**

Two early cased Cambridge bicycle medals. Good condition. Ed Berry Collection. Estimate: 50.00 - 75.00

**176 High Wheel Whistle**

Early brass high wheel whistle with embossed high wheel rider. The Acme Registered Patent. Good condition. Ed Berry Collection. Estimate: 50.00 - 75.00

**176a Bicycle Book Lot**

Book lot including When Bikehood was in Flower (I.A. Leonard), Cycling History Myths And Queries (Derek Roberts), Collection And Restoring Antique Bicycles (G. Donald Adams), RIDING HIGH (Arthur Judson Palmer), Der Adler auf dem Schutzblech, LE CYCLISME (E. Jadault). Good condition. Ed Berry Collection. Estimate: 50.00 - 75.00

**177 High Wheel Clock**

Early high wheel alarm bell clock. 8" W., 8" H.. Good condition. Ed Berry Collection. Estimate: 75.00 - 100.00

**177a Spanish Velocipede Club Certificate**

Early Spanish Velocipede Club certificate. 16 1/2" x 13". Good condition. Ed Berry Collection. Estimate: 50.00 - 75.00

**178 Book Lot: The Boneshaker 1955-2019**

Book Lot: The Boneshaker 1955-2019. (7) large and (13) small volumes. Good condition. Ed Berry Collection. Estimate: 50.00 - 100.00

**179 Columbia Expert High Wheel Bicycle**

C. 1880's Columbia Expert high wheel bicycle. 50". Good condition. Rare Columbia grips. Collection of Margaret Ann Baker. Estimate: 800.00 - 1,200.00

**180 19th Century Tricycle**

19th c. wooden tricycle. Nice restoration. 29" front wheel, 25" rear wheels. James Hetzer Collection New Hampshire. Estimate: 500.00 - 700.00

**181 Ben Hur Pneumatic Safety Bicycle**

Ben Hur pneumatic safety bicycle. Model 15. 24" frame. Barn find condition. Margaret Anne Baker Collection. Estimate: 200.00 - 300.00

**182 Crawford Pneumatic Safety Bicycle**

Crawford pneumatic safety bicycle. 22" frame. Good original condition. Margaret Anne Baker Collection. Estimate: 300.00 - 400.00

**183 Elliot Hickory Pneumatic Safety Bicycle**

Elliot Hickory type pneumatic safety bicycle. 18" frame. Older restoration. Some denting to top tubing. Margaret Anne Baker Collection. Estimate: 400.00 - 600.00



31st Annual Bicycle Auction, October 21, 2023 10/21/2023

LOT #

184 Victoria Pneumatic Safety Bicycle

Victoria pneumatic safety bicycle. Overman Wheel Company. 20" frame. Good condition. Estimate: 300.00 - 500.00



185 Rambler Pneumatic Safety Bicycle

Rambler pneumatic safety bicycle. 24" frame. Barn find condition. Margaret Anne Baker Collection. Estimate: 400.00 - 600.00



186 Cigar Cutter Lot

Lot including safety bicycle metal and rubber safety cigar cutter (marble base, 8" W., 5 1/2" Ht.), and cast metal figure (7 1/2" Ht.). Good condition. Ed Berry Collection. Estimate: 75.00 - 100.00



187 L.A.W. Pins and Medals

Showcase lot of (14) L.A.W. pinbacks and ribbons. Case included. Ed Berry Collection. Estimate: 75.00 - 100.00



188 Velocipede Belt Buckle Lot

Lot including velocipede belt buckle and printing block. Good condition. Ed Berry Collection. Estimate: 50.00 - 75.00



188a Book Lot

Lot including Across Asia On A Bicycle (1894), R.L. Jefferson cigarette card and booklet "To Constantinople on a Bicycle" (London). Fair-Good condition. Ed Berry Collection. Estimate: 50.00 - 75.00



189 L.A.W. Medals Lot

Lot (16) L.A.W. ribbons and medals. Case included. Ed Berry Collection. Estimate: 75.00 - 100.00



190 L.A.W. Medals Lot

Lot (10) L.A.W. medals and ribbons. Case included. Ed Berry Collection. Estimate: 75.00 - 100.00



190a Book Lot

Book lot including: Cycling (1895), Bicycle Tour In England And Wales (1881), Side Slips (1898), The Romance Of The Cyclists' Touring Club (1928), The Roads Of England & Wales. Good condition. Ed Berry Collection. Estimate: 50.00 - 75.00



191 L.A.W. Medals Lot

Lot (28) L.A.W. medals, medallions, pins. Case included. Ed Berry Collection. Estimate: 75.00 - 100.00



192 L.A.W. Medals Lot

Lot (20) L.A.W. medals and ribbons. Case included. Ed Berry Collection. Estimate: 75.00 - 100.00



192a Early Patented Roller Blades

Early 1909 Patented roller blades with spring loaded pivoting metal wheels. Made in Chicago. Original condition. Estimate: 200.00 - 400.00



193 L.A.W. Pinbacks

Collection of 50 plus L.A.W. pinbacks. Case included. Ed Berry Collection. Estimate: 75.00 - 100.00



31st Annual Bicycle Auction, October 21, 2023 10/21/2023**194 Book Lot: Cycling Volumes I-V**

Book Lot: Cycling Volumes I-V. (1891-93).
Good condition. Ed Berry Collection.
Estimate: 100.00 - 150.00

**195 Porcelain Velocipede Trinket Boxes**

Lot (2) early velocipede porcelain trinket boxes. Largest 3" L.. Good condition. Ed Berry Collection. Estimate: 50.00 - 75.00

**196 Bicycle History Books**

14 Volumes of Bicycle History. Along with Scotland Museum of Transport Catalog. Good condition. Ed Berry Collection. Estimate: 50.00 - 75.00

**197 William Allen Rogers (1854-1931), Original Illustr**

William Allen Rogers (1854-1931), original illustration (sight 11 1/2" x 11", overall 18" x 17", watercolor or gouache), along with (2) books A World Worth While" (W.A. Rogers), and "The Ready Rangers" (illustrated by W.A. Rogers), illustrated at beginning of book and references page 205. Good condition. Ed Berry Collection. Estimate: 300.00 - 500.00

**197a Book Lot**

Lot (3) books including Bartleet's Bicycle Book, Punch's Library Of Humour, The Road and the Roadside (1887, author signed to prominent Wheelmen). Fair-good condition. Ed Berry Collection. Estimate: 50.00 - 75.00

**198 Porcelain Fairing**

19th c. porcelain Faring "The girls of the period". 3 1/2" W., 4" Ht.. Good condition. Ed Berry Collection. Estimate: 50.00 - 75.00

**199 Porcelain Fairings**

Lot (2) 19th c. porcelain fairings. Figures on velocipedes. Largest 4" W., 4" Ht.. Good condition. Ed Berry Collection. Estimate: 50.00 - 75.00

**199a Book Lot**

Lot (4) books including: Wheels and Whims (1884), Cycling Humours (London, Cycling for Health (1913), Dr. Neesen On Wheeling (1899). Good condition. Ed Berry Collection. Estimate: 50.00 - 75.00

**200 Velocipede Glass Perfume**

Lot including velocipede perfume holder, and figural bottle. Good condition. Ed Berry Collection. Estimate: 50.00 - 100.00

**200a Bicycle Head Badges**

Lot (9) bicycle head badges including Rayack, Pioneer, Eagle, Merion, Hadicap etc.. Good condition. Ed Berry Collection. Case included. Ed Berry Collection. Estimate: 75.00 - 100.00

**201 Book Lot**

Lot including 100 Years of Bicycle Posters and portfolio "LA VELOCIPEDOMANIE". Good condition. Ed Berry Collection. Estimate: 50.00 - 75.00

**202 Bicycle Related Sheet Music**

Lot of early bicycle sheet music (19). All velocipedes. Fair-good condition. Ed Berry Collection. Estimate: 100.00 - 150.00



31st Annual Bicycle Auction, October 21, 2023 10/21/2023**LOT #****203 High Wheel Bicycle Accessory**

Leather pouch with silverplate Norfolk & Norwich Bicycle Club container dated 1877. Pouch overall 6" x 4 1/2" x 1 1/2". Good condition. Ed Berry Collection. Estimate: 75.00 - 100.00

**204 Misc. Lot**

Lot including Lucas lamp from the S.F. Cody Archive, head badge, medallions, ephemera, bandanna. Ed Berry Collection. Estimate: 50.00 - 100.00

**205 Velocipede Lot**

Lot of velocipede stick pin, medallions, tokens. Case included. Ed Berry Collection. Estimate: 75.00 - 100.00

**205a Thomas Stevens Collectibles Lot**

Lot of Thomas Stevens items including Tobacco card, medallions, razor etc.. Case included. Ed Berry Collection. Estimate: 50.00 - 75.00

**206 Early Velocipede High Wheel Bicycle**

Early velocipede high wheel bicycle. Wooden wheel. Traces of original paint. 42" wheel. Good condition. Collection of Margaret Ann Baker. One spoke loose. Estimate: 800.00 - 1,200.00

**207 Kennedy High Wheel Bicycle**

Kennedy high wheel bicycle. 46". Good condition. Collection of Margaret Ann Baker. Estimate: 500.00 - 700.00

**208 Kennedy High Wheel Bicycle**

60" Kennedy high wheel bicycle. Good condition. Collection of Margaret Ann Baker. Estimate: 800.00 - 1,200.00

**208a Book A Tandem Tour In Norway**

Book: A Tandem Tour In Norway (By S. Golder). Ed Berry Collection. Fair condition. Ed Berry Collection. Estimate: 40.00 - 60.00

**209 Rutgers Pneumatic Safety Bicycle**

Rutgers pneumatic safety bicycle. Ex: David Metz Collection to current owner. Restored by Cycle Art California. Signed by Cycle Art. Nice restoration, good condition. 22" frame. First time a Rutgers has been offered at Copake Auction. Estimate: 1,000.00 - 1,500.00

**210 Kennedy High Wheel Bicycle**

Kennedy high wheel bicycle. 50". Good condition. Collection of Margaret Baker. Estimate: 400.00 - 500.00

**210a Relay Bicycle Lot**

Showcase lot of Relay Bicycle items including medal, pinbacks, ribbons. Case included. Ed Berry Collection. Estimate: 50.00 - 75.00

**211 1950 Shelby Bicycle**

1950 Shelby 24" bicycle. Original condition. Estimate: 100.00 - 150.00

**211a Book: Manuel Technique Et Pratique....**

Book: Manuel Technique Et Pratique Du Velocipede. Paris 1892. Autographed by Pierre Giffard. Good condition. Ed Berry Collection. Estimate: 50.00 - 100.00



31st Annual Bicycle Auction, October 21, 2023 10/21/2023

212 1950 Columbia Bicycle

1950 Waverly Columbia Deluxe 26" bicycle. Has headlight, rear rack, tank, chain guard. Good condition. Estimate: 150.00 - 200.00



216 Crawford Pneumatic Safety Bicycle

Crawford pneumatic safety bicycle. Barn find condition. 24" frame. Collection of Margaret Ann Baker. Estimate: 300.00 - 400.00



213 1960's Schwinn Bicycle

1960's Schwinn Fiesta Deluxe 26" bicycle. Headlight, tank, rear rack. Good condition. Estimate: 75.00 - 100.00



217 Crawford Pneumatic Safety Bicycle

Crawford pneumatic safety bicycle. As found, barn find condition. 20" frame. Collection of Margaret Ann Baker. Estimate: 75.00 - 100.00



213a Book Lot

Book lot including: Our Sentimental Journey (Pennell, 1888), Two Pilgrim's Progress (Pennell, 1887), North Road Cycling Club. Fair-good condition. Ed Berry Collection. Estimate: 50.00 - 75.00



218 Eclipse Pneumatic Safety Bicycle

Eclipse pneumatic safety bicycle. 21" frame. Barn find condition. Collection of Margaret Ann Baker. Estimate: 150.00 - 200.00



214 Dawes Lightweight Bicycle

Dawes lightweight road bicycle. Made in England. 23 1/2" frame. Leader saddle. Good condition. Estimate: 150.00 - 250.00



219 Crawford Pneumatic Safety Bicycle

Crawford pneumatic safety bicycle. Barn find condition. 21" frame. Collection of Margaret Ann Baker. Estimate: 150.00 - 200.00



214a Book Lot

Book lot including: Round The World On A Wheel (Fraser, (2) booklets "CYCLES PAST AND PRESENT", "What & Why". Fair-good condition. Ed Berry Collection. Estimate: 50.00 - 75.00



219a Book lot

Lot (2) books including Nauticus In Scotland (1884), along with Some Literary Landmarks for Pilgrims on Wheels (1901). Fair-good condition. Ed Berry Collection. Estimate: 50.00 - 75.00



215 Crawford Pneumatic Safety Bicycle

Crawford pneumatic safety bicycle. Barn find condition. 22" frame. Collection of Margaret Ann Baker. Estimate: 150.00 - 200.00



220 Crawford Pneumatic Safety Bicycle

Crawford pneumatic safety bicycle. Barn find condition. 24" frame. Collection of Margaret Ann Baker. Estimate: 300.00 - 400.00



215a Bicycle Medallions

Collection of (15) early Safety bicycle medallions. Case included. Good condition. Ed Berry Collection. Estimate: 75.00 - 100.00



31st Annual Bicycle Auction, October 21, 2023 10/21/2023**LOT #****220a McKinley Lot**

McKinley lot including name plate, ribbon, pin, medal, pinback. Case included. Good condition. Ed Berry Collection. Estimate: 75.00 - 100.00

**221 Cushion Tire Safety Bicycle**

Cushion tire safety bicycle. Barn find condition. 19" frame. Collection of Margaret Ann Baker. Estimate: 300.00 - 400.00

**222 Crawford Pneumatic Safety Bicycle**

Crawford pneumatic safety bicycle. Barn find condition. 24" frame. Collection of Margaret Ann Baker. Estimate: 300.00 - 400.00

**222a Book Lot**

Book lot including In And Around Cape Anne (John S. Webber Jr., 1885), MEMORIALS OF THE HON. ION KEITH-FALCONER, M.A. (1888), Wheels of Fortune A Salute To Pioneers (Sir Arthur Du Cros, BT., 1938). Good condition. Ed Berry Collection. Estimate: 50.00 - 75.00

**223 Columbia Pneumatic Safety Bicycle**

Columbia Model 41 pneumatic safety bicycle. Barn find condition. 24" frame. Collection of Margaret Ann Baker. Estimate: 300.00 - 400.00

**224 BSA Paratrooper Bicycle**

World War II, BSA paratrooper folding bicycle with head lamp. 20" frame. Sprocket marked "BSA". Fair condition. Collection of Margaret Ann Baker. Estimate: 300.00 - 500.00

**225 Swiss Army Bicycle**

Swiss Army bicycle. Fully accessorized. 22" frame. Good condition. Collection of Margaret Ann Baker. Estimate: 300.00 - 400.00

**225a Dan Albone Letter**

Lot including Dan Albone signed letter and Rudge 1886 letter. Good condition. Ed Berry Collection. Estimate: 50.00 - 75.00

**226 Crawford Pneumatic Safety Bicycle**

Crawford pneumatic safety bicycle. Barn find condition. 22" frame. Collection of Margaret Ann Baker. Estimate: 150.00 - 200.00

**227 Crawford Pneumatic Safety Bicycle**

Crawford pneumatic safety bicycle. Barn find condition. 19" frame. Collection of Margaret Ann Baker. Estimate: 150.00 - 200.00

**228 Ephemera Lot**

Ephemera lot including 1895 Sunday Globe paper doll, Sunday Herald paper doll outfit etc.. Good condition. Ed Berry Collection. Estimate: 25.00 - 50.00

**229 Chinese Tapestry**

Early Chinese tapestry with figure on a boneshaker. 26" x 38". Fair condition. Ed Berry Collection. Estimate: 50.00 - 75.00

**230 Bicycle Medals Lot**

Lot (9) early bicycle medals. Includes National Cycle Show 1893, Cycle Dealers Association, Presidents Medal etc.. Good condition. Case included. Ed Berry Collection. Estimate: 75.00 - 100.00



31st Annual Bicycle Auction, October 21, 2023 10/21/2023

230a Bicycle Ephemera Lot

Lot of (9) velocipede related ephemera.
Fair-good condition. Ed Berry Collection.
Estimate: 25.00 - 50.00



237 Kennedy Eagle High Wheel Bicycle

Kennedy Eagle high wheel bicycle. Badged
"The Kennedy No. 6". Good condition.
Collection of Margaret Ann Baker. 52".
Estimate: 1,000.00 - 1,500.00



231 Showcase Lot

Showcase lot including Ed Berry Jr.
Century pin, ribbons, pinbacks. Good
condition. Ed Berry Collection. Estimate:
50.00 - 75.00



238 Velocipede Medals

Lot (2) early Velocipede medals. One dated
1876. Case included. Ed Berry Collection.
Estimate: 50.00 - 75.00



232 Celluloid Buttons

Lot (7) early celluloid buttons including
National Cycle Club, Harper Bicycle. Case
included. Ed Berry Collection. Estimate:
50.00 - 75.00



239 Columbia Expert High Wheel Bicycle

Columbia Expert high wheel bicycle. 50".
Barn find condition. Estimate: 800.00 -
1,200.00



233 Bicycle Watch Fobs

Lot (2) early bicycle related watch fobs.
Good condition. Case included. Ed Berry
Collection. Estimate: 50.00 - 75.00



240 Child's High Wheel Bicycle

C. 1880's child's high wheel bicycle. 42".
Original condition, worn paint, some bent
spokes. Collection of Margaret Ann Baker.
Estimate: 800.00 - 1,200.00



234 Showcase Lot

Showcase lot, TOC items including pocket
knife, heart shaped box, Rochester Cycle
Mfg. Co. matchesafe, (3) matchesafes. Good
condition. Ed Berry Collection. Estimate:
75.00 - 100.00



241 Pope Pneumatic Safety Bicycle

Pope pneumatic safety bicycle. 18" frame.
Great original surface. Estimate: 150.00 -
250.00



235 Bicycle Medallions

Lot (5) early bicycle medallions with hard
tire safety bicycles. Case included. Good
condition. Ed Berry Collection. Estimate:
50.00 - 75.00



241a Book Cycling Art, Energy And Locomotion

Book: Cycling Art, Energy And
Locomotion (Robert P. Scott, 1889). Good
condition. Ed Berry Collection. Estimate:
50.00 - 75.00



236 Victor Nameplate and Ribbon

Lot including original Victor nameplate and
ribbon. Case included. Ed Berry Collection.
Estimate: 50.00 - 75.00



242 Indian Princess Bicycle

Indian Princess light weight bicycle. 21"
frame. American Flag bell. Good condition.
Estimate: 75.00 - 100.00



31st Annual Bicycle Auction, October 21, 2023 10/21/2023**LOT #****243 Crescent Pneumatic Safety Bicycle**

Crescent pneumatic safety bicycle with wooden rims. 21" frame. Fair condition. Estimate: 150.00 - 200.00

**243a Book Lot**

Book lot including Velocipedie Et Automobilism (F. Regamey, along with Histoire De La Locomotion Terrestre. Good condition. Ed Berry Collection. Estimate: 75.00 - 100.00

**244 Bicycle Lamp Lot**

Lot (2) bicycle lamps including P & A Banner (8 1/2" Ht., good condition), and Persons Majestic (5" L., good condition). Estimate: 50.00 - 75.00

**245 Poster of Stillman G. Whittaker**

Framed post of Stillman G. Whittaker, high wheel bicycle world record holder, by P.C. Darrow. Marked "supplement to The Wheelmen's Record" and "S.G. Whittaker And His old American Champion Full Roadster, which he has ridden upwards of 4000 miles, and on which he made all of his world's records. Overall in frame 22" x 16". Good condition. Estimate: 75.00 - 100.00

**246 Pope Bicycle Poster**

1904 Pope Manufacturing Company poster, woman with safety bicycle greeting woman on porch. American Lithographic Co.. Sight 25 1/2" x 18 1/2", overall 30 1/2" x 23". Good condition. From the Jim Carpenter Collection. Estimate: 300.00 - 400.00

**246a Outing Books Volumes 5-10**

Book lot: Outing Volumes 5-10. Good condition. Ed Berry Collection. Estimate: 100.00 - 150.00

**247 Bicycle Lock**

1882 Ames Sword Co. bicycle lock with key. Lock is 1 1/8" W. x 1 5/8" Ht.. With 16" chain. Good condition. Estimate: 50.00 - 75.00

**247a Book Bicycling For Ladies**

Book: Bicycling For Ladies (M.E. Ward, 1896). Good condition. Ed Berry Collection. Estimate: 50.00 - 75.00

**248 1940's Schwinn Autocycle Bicycle**

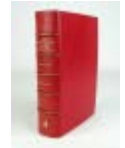
1940's Schwinn Autocycle bicycle. 18" frame. Fair condition. Estimate: 100.00 - 200.00

**249 Pneumatic Safety Tandem Bicycle**

Pneumatic safety tandem bicycle. Barn find condition. Retains a bicycle lamp. Estimate: 200.00 - 300.00

**249a Catford Cycling Club Historically Significant Book**

Book: The First 50 Years Of The Catford Cycling Club, 1886-1936 (Southcott). Good condition. Ed Berry Collection. This is a one-of-a-kind leather-bound book! , Last pages autographed by members of the cycling club (over 60 original autographs including some prominent English Cyclists). Historically significant item. Estimate: 300.00 - 500.00



31st Annual Bicycle Auction, October 21, 2023 10/21/2023**LOT #****250 Crawford Pneumatic Safety Bicycle**

Crawford pneumatic safety bicycle. 24" frame. Good condition. Collection of Margaret Ann Baker. Estimate: 400.00 - 500.00

**255 Early Transferware Plates & Cup**

Lot (3) pieces of early transferware including cup with velocipede riders, 7" plate "A COUNTRY PARTY" (some discoloring), 8" plated "HISTOIRE DE RIRE" (chip to rim). Ed Berry Collection. Estimate: 50.00 - 75.00

**251 Antique Bottles with Velocipedes**

Lot (2) antique velocipede bottles. Tallest 7 3/4" Ht.. Good condition. Ed Berry Collection. Estimate: 50.00 - 100.00

**255a Book Lot**

Book lot including: Health Upon Wheels (1885), and Lady Cycling (by Miss. F.J. Erskine. Good condition. Ed Berry Collection. Estimate: 50.00 - 75.00

**251a Book Bicycles And Tricycles**

Book: Bicycles And Tricycles (Sharp, 1896). Fair condition. Ed Berry Collection. Estimate: 50.00 - 75.00

**256 Framed Cyclist Cigarette Cards**

Collection of (25) framed Cigarette cards, trick riders and women on safety bicycles. Overall in frame 26 1/2" x 18". Ed Berry Collection. Estimate: 150.00 - 200.00

**252 Ceramic Velocipede Match Holder**

Early ceramic velocipede match holder. 5" W., 6 1/2" Ht.. Good condition. Estimate: 50.00 - 100.00

**257 Velocipede Tin Toys**

Lot (2) early velocipede tin toys. Largest 5" W., 5 1/2" Ht.. Good condition. Ed Berry Collection. Estimate: 75.00 - 100.00

**253 Ceramic Cigar Cutter**

Early ceramic and metal cigar cutter. 5" W., 8 1/4" Ht.. Good condition. Ed Berry Collection. Estimate: 50.00 - 100.00

**258 Ephemera Lot**

Lot of various Velocipede ephemera including prints, cutouts. Good condition. Ed Berry Collection. Estimate: 40.00 - 60.00

**254 1889 Racing Saddle Trophy**

1889 racing saddle trophy "1st BOOBY PRIZE L.C.C. RACE 1889 WON BY "BERT" BREWSTER". Along with print of L.A.W. Bulletin 16, Aug. 1889 with information about the race. Ed Berry Collection. Estimate: 150.00 - 200.00

**258a The Wheel World Volumes (4) Volumes**

Book Lot: (4) Volumes of The Wheel World. 1883-4, 1884-85, 1885, 1886. Good condition. Ed Berry Collection. Estimate: 150.00 - 200.00



31st Annual Bicycle Auction, October 21, 2023 10/21/2023**LOT #****259 Velocipede School Ticket**

Rare Velocipede School ticket "T.E. HASTINGS PROPRIETOR". Good condition. Ed Berry Collection. Estimate: 40.00 - 60.00

**259a Volumes 1-6 of Bicycling & Tricycling Illustrated**

Volumes -16 of Bicycling & Tricycling Illustrated (in two books). Ed Berry Collection. Estimate: 150.00 - 200.00

**260 Star Bicycle Lot**

Lot including (3) Star items including envelope, 1890 medal, medallion. Ed Berry Collection. Estimate: 40.00 - 60.00

**261 Trade Card**

Early trade card with high wheel riders "THE GRACES OF THE BICYCLE". Good condition. Ed Berry Collection. Estimate: 25.00 - 50.00

**262 The Champion Women Cyclists Pamphlet**

THE CYCLE CARNIVAL COMPANY PRESENTS THE CHAMPION WOMEN CYCLISTS pamphlet. Good condition. Ed Berry Collection. Estimate: 40.00 - 60.00

**263 Velocipede Patent Book**

1867-76 PATENT FOR INVENTIONS / ABRIDGEMENTS OF SPECIFICATIONS / CLASS 136, VELOCIPEDES / PERIOD A.D. 1867-76. Fair condition. Ed Berry Collection. Estimate: 50.00 - 100.00

**264 1882 Columbia Bicycles Catalog**

1882 Columbia Bicycles catalog. Fair condition. Ed Berry Collection. Estimate: 50.00 - 75.00

**265 James Starley Pamphlet Lot**

Lot including early pamphlet "THE LIFE AND INVENTIONS OF JAMES STARLEY INVENTOR OF THE TRICYCLE" (fair condition), and booklet "Fifty Years of the Bicycle Worcestershire 1880-1930 (good condition). Ed Berry Collection. Estimate: 25.00 - 50.00

**266 Star Letterhead**

Letterhead and envelope from THE AMERICAN STAR BICYCLE. Good condition. Ed Berry Collection. Estimate: 25.00 - 50.00

**267 Booklet Lot**

Lot including Booklet "THE LITTLE BOY'S VELOCIPEDE" and "FREDERICK AND FRANK" (good condition). Ed Berry Collection. Estimate: 25.00 - 50.00

**267a Book Around The United States By Bicycle**

Book: Around The United States By Bicycle. Good condition. Ed Berry Collection. Estimate: 40.00 - 60.00

**268 Columbia Bicycle Dolls Book Lot**

Lot including Columbia Bicycle dolls book and (6) die-cut dolls. Good condition. Ed Berry Collection. Estimate: 50.00 - 75.00



31st Annual Bicycle Auction, October 21, 2023 10/21/2023

LOT #

269 Columbia Ephemera Lot

Lot (10) pieces of Columbia ephemera.
Good condition. Ed Berry Collection.
Estimate: 50.00 - 75.00



270 Columbia Ephemera Lot

Lot (6) pieces of Columbia ephemera. Good
condition. Ed Berry Collection. Estimate:
50.00 - 75.00



271 Child's Velocipede High Wheel Bicycle

C. 1879 Child's Iron high wheel (ordinary),
28" front wheel, 21" rear wheel, restored,
improper pedals. Pedaling History Museum
Collection (sold at Copake Auction lot 115
April 2013). Margaret Anne Baker
Collection. Estimate: 800.00 - 1,200.00



272 Bronze High Wheel Doorstop

Bronze high wheel doorstop. 11" Ht.. Good
condition. Ed Berry Collection. Estimate:
100.00 - 150.00



273 Cast Medallion with Safety Riders

C. 1900 cast medallion with safety racers. 9"
D.. Good condition. Ed Berry Collection.
Estimate: 100.00 - 150.00



274 Hub Light Holder

Hub light holder. Comes with patent info
"F.A. JACKSON & W.M. FRISBIE". 14" L..
Good condition. Ed Berry Collection.
Estimate: 50.00 - 100.00



275 Rare Velocipede Match Holders

Two rare velocipede match holders. 3" L.,
3" Ht.. Good condition. Ed Berry Collection.
Estimate: 150.00 - 250.00



276 Antique Velocipede Toys

Lot (3) antique tin velocipede toys. Largest
6" Ht.. Tallest wheels loose. Ed Berry
Collection. Estimate: 75.00 - 100.00



277 Thomas Stevens Plaque

Plaster Thomas Stevens plaque. #1 of 15.
Ed Berry Collection. 18" x 12 1/2". Minor
rear corner imperfections. Ed Berry
Collection. Estimate: 75.00 - 100.00



278 Thomas Stevens Columbia Advertising

Plaster Thomas Stevens Columbia Pope
Mfg. Co. Boston counter top advertising
figure. 16" Ht.. Good condition. Ed Berry
Collection. Estimate: 150.00 - 200.00



279 Book: Modern Velocipede

Book: "MODERN VELOCIPEDE ITS
HISTORY AND CONSTRUCTION"
(London). Fair condition. Ed Berry
Collection. Estimate: 150.00 - 200.00



279a Six Volumes of The George Moore Collection

Six Volumes of The George Moore
Collection. Numbered editions. Good
condition. Ed Berry Collection. Estimate:
50.00 - 75.00



280 Book: Souvenir Of The A.C.C. Cycle Show

Book: "Souvenir OF THE A.C.C. CYCLE
SHOW AN Exhibition of Cycles and
Cycling Accessories" (March 2 to 7 1891).
Horticultural Hall Philadelphia. Fair
condition. Ed Berry Collection. Estimate:



31st Annual Bicycle Auction, October 21, 2023 10/21/2023

150.00 - 200.00

281 Book: THE ART OF TRAINING FOR CYCLING RACING

Book: "THE ART OF TRAINING FOR CYCLING RACING BY GEORGE LACY HILLIER" (London 1888). Fair condition. Ed Berry Collection. Estimate: 150.00 - 200.00



282 Booklet "BICYCLING it's RISE & DEVELOPMENT"

Booklet "BICYCLING its RISE & DEVELOPMENT" (1876). Fair condition. Ed Berry Collection. Estimate: 50.00 - 75.00



283 Book: All Heil

Book: "All Heil" (1885). Fair condition. Ed Berry Collection. Estimate: 150.00 - 200.00



284 Currier & Ives Velocipede Print

19th c. Currier & Ives "THE VELOCIPEDE" print. Sight 10" x 12 1/2", overall 16" x 18 1/2". Fair condition. Ed Berry Collection. Estimate: 150.00 - 250.00



285 Velocipede Print

Rare 1919 velocipede print. Printed by L. Harrison, 373 Strand. Sight 8" x 9 1/2", overall 12" x 13 1/2". Good condition. Estimate: 150.00 - 200.00



286 Velocipede Pipe

19th c. Velocipede with rider pipe. 6" L.. Good condition. Ed Berry Collection. Estimate: 200.00 - 300.00



287 Meerschaum Velocipede Pipe

19th c. Meerschaum velocipedes pipe. 3 3/4" L.. Good condition. Fitted case. Ed Berry Collection. Estimate: 200.00 - 300.00



288 Meerschaum Velocipede Pipe

19th c. Meerschaum velocipedes pipe. 6" L.. Good condition, tip reglued. Fitted case. Ed Berry Collection. Estimate: 200.00 - 300.00



289 L.A.W. Sliced Plug Tin

L.A.W Sliced Plug Good Roads tin. 4 1/2" W.. Good condition. Ed Berry Collection. Estimate: 50.00 - 75.00



290 Ceramic High Wheel Figure

19th c. ceramic high wheel figure (metal high wheel). Arm broken. Ed Berry Collection. Estimate: 50.00 - 75.00



291 Mantel Clock with Safety Rider

Antique mantel clock with safety rider. Needs restoration. 9" x 5 1/2" x 13". Ed Berry Collection. Estimate: 50.00 - 75.00



292 Ceramic Pin Tray

Early ceramic humorous pin tray. 8" L.. Woman with high wheel. Minor imperfections. Ed Berry Collection. Estimate: 50.00 - 75.00



293 Ceramic Figure with High Wheel

Early ceramic figure with metal high wheel bicycle. 7" W., 7" Ht.. Ed Berry Collection. Estimate: 50.00 - 100.00



31st Annual Bicycle Auction, October 21, 2023 10/21/2023

LOT #

293a Porcelain Lot

Lot including 19th c. porcelain jar "TABAC", has figure on velocipede, 5" Ht., spidering to base, along with porcelain monkey on velocipede vase (5 1/2" Ht., good condition). Ed Berry Collection. Estimate: 50.00 - 75.00



294 Ceramic Cigar Holder

Early ceramic cigar holder. Head repaired. Otherwise good shape. 9 1/2" Ht.. Ed Berry Collection. Estimate: 50.00 - 100.00



294a Sterling Silver Velocipede Lot

Lot including sterling silver velocipede tricycle (3" L.), and figure with velocipede (1" L.). Good condition. Ed Berry Collection. Estimate: 25.00 - 50.00



295 Draisine Model

Wooden Draisine model (16" W., 10" Ht.), along with ceramic medallion (4" D.). Good condition. Ed Berry Collection. Estimate: 300.00 - 400.00



296 Lot of Velocipede Boxes

Lot (3) velocipede boxes. Largest 3 1/2" L.. Good condition. Ed Berry Collection. Estimate: 50.00 - 100.00



297 Spillane Child's High Wheel Bicycle

Spillane reproduction child's high wheel bicycle. Good condition. James Hetzer Collection New Hampshire. Estimate: 700.00 - 900.00



298 Cigar Holder

Early ceramic cigar holder. Figure on boneshaker with dog. 6" W., 6" Ht.. Good condition. Ed Berry Collection. Estimate: 50.00 - 100.00



299 Invalid Tricycle

C. 1899 Invalid tricycle. Fairy Cycle Co., Elyria Ohio. 30" rear wheels, 17" front wheel. Good restored condition. James Hetzer Collection New Hampshire. Estimate: 400.00 - 500.00



300 Victor Safety Bicycle

C. 1893 Victor cushion tire safety bicycle. Barn find condition. Retains badge. Provenance: Ed & Marion Gerling Collection. Estimate: 800.00 - 1,200.00



300a Handbook for Lady cyclists

Early Handbook for Lady Cyclists. Good condition. Ed Berry Collection. Estimate: 40.00 - 60.00



301 Chainless Pneumatic Safety Bicycle

Chainless pneumatic safety bicycle. 22" frame, Kelly handlebars. Barn find condition. Estimate: 400.00 - 600.00



302 Hub Lamp

Eureka bicycle hub lamp. 9 1/2" Ht.. Good condition. Ed & Marion Gerling Collection. Estimate: 400.00 - 600.00



303 Bicycle Hub Lamp

Bicycle hub lamp "King of The Road..." Joseph Lucas & Son, Birmingham. Cracked lens. 8 1/2" Ht.. Ed & Marion Gerling Collection. Estimate: 300.00 - 400.00



31st Annual Bicycle Auction, October 21, 2023 10/21/2023

304 Bicycle Hub Lamp

Bicycle hub lamp "THE POPULAR HUB LAMP". No interior, otherwise good condition. 8" Ht.. Ed & Marion Gerling Collection. Estimate: 150.00 - 250.00



309 French Bicycle Poster

Early French bicycle poster "HURTU, HURTU, HAUTIN & DILIGEON PARIS...". Mounted on linen. 39" x 53". Estimate: 200.00 - 400.00



305 Bicycle Hub Lamp

Bicycle hub lamp. Pat'd Sep 26 '82. 7 1/2" Ht.. Good condition. Ed & Marion Gerling Collection. Estimate: 200.00 - 300.00



310 Raleigh Bicycle Poster

Early Raleigh bicycle poster with Sir. Walter Raleigh. Mounted on linen. 39 1/2" x 59 1/2". Estimate: 200.00 - 400.00



305a Ephemera Lot

Lot including Riding Rhymes (By F.T. Bidlake), along with Tip Top Weekly By Burt L. Standish. Fair condition. Ed Berry Collection. Estimate: 50.00 - 75.00



310a Ephemera Lot

Ephemera lot including Victor Bicycles pamphlet, A Story Of The Railroad And A Bicycle pamphlet, along with Inventions Extravagantes De La Bicyclette. Fair-Good condition. Ed Berry Collection. Estimate: 50.00 - 75.00



306 Bicycle Hub Lamp

Bicycle hub lamp "COOPERS PATENT". 8" Ht.. Good condition. Ed & Marion Gerling Collection. Estimate: 300.00 - 400.00



311 Cycles Megret Bicycle Poster

Early French Cycles Megret bicycle poster. Mounted on linen. 39 1/2" x 55 1/2". Estimate: 200.00 - 400.00



306a The Badminton Library Book Lot

Lot (2) books: The Badminton Library. One dated 1891, the other is copy number 119. Also included is a Edith Wharton First Day Issue envelope. Good condition. Ed Berry Collection. Estimate: 50.00 - 75.00



312 French Bicycle Poster

Early French bicycle poster "ENFIN LA VOILA!!! / LA FAVORITE / SELLE / Pneu-Velo". 46 1/2" x 31 1/2". Mounted on linen. Estimate: 200.00 - 400.00



307 Bowden Spacelander Frame & Parts

Bowden Spacelander frame. As found condition. Along with handlebars, head tube and forks, pair of wheels and tires (B.F.Goodrich Silvertown, 26 x 1 3/8), seat, pedals, chain ring, crank arms, crank arms. Frame in need of restoration. Estimate: 400.00 - 600.00



313 French Bicycle Poster

Early French bicycle poster "NEW HOWE...". Mounted on linen. 58 1/2" x 39 1/2". Estimate: 200.00 - 400.00



314 French Bicycle Poster

Early French bicycle poster "L' ETOILE...". As found. Mounted on linen. 55 1/2" x 39 1/2". Estimate: 150.00 - 200.00



31st Annual Bicycle Auction, October 21, 2023 10/21/2023

315 Japanese Truing Stand

C. 1950's Japanese truing stand. Good condition. Estimate: 50.00 - 75.00



319 Ceramic Tobacco Box

Early English tobacco box with figures colliding on boneshakers. Top has man in the aftermath. 6" x 4" x 7 1/2". Good condition. Ed Berry Collection. Estimate: 150.00 - 250.00



315a Ephemera Lot

Lot (9) early postcards including Americus Wheelmen, high wheel rider etc.. Fair-good condition. Ed Berry Collection. Estimate: 50.00 - 75.00



319a Handle Bar Banner

Handle bar banner "NEW YORK STATE DIVISION 1880-1980" (holder 38" L.). Good condition. Ed Berry Collection. Estimate: 50.00 - 75.00



316 Astro Damlier Lighted Sign

Astro Damlier lighted sign. 9 1/2" x 29". Does not work. Estimate: 50.00 - 75.00



320 Book: THE BICYCLE ITS USE AND ACTION (Spencer)

Book: "THE BICYCLE ITS USE AND ACTION" (Charles Spencer, London, 1870). Fair condition. Ed Berry Collection. Estimate: 150.00 - 200.00



316a Thomas Stevens Book Lot

Book lot including 1886 Wheelmen's Reference book (page 96 mentions Thomas Stevens), Umdie Erde auf dem Zweirad (Von Th. Stevens), Um die Erde (Thomas Stevens), OPEEN RIJWIEL DE WERELD ROND. Good condition. Ed Berry Collection. Estimate: 50.00 - 100.00



320a Historic Boston Bicycle Lot

Lot (3) pieces including City of Boston medal (figure with high wheel), By B.C. pin, January 2, 1882 Boston Bicycle Club card. Good condition. Case included. Ed Berry Collection. Estimate: 50.00 - 75.00



317 Puch Lighted Sign

Puch lighted sign. 14 1/2" x 26 1/2". Works. Estimate: 50.00 - 75.00



321 Book: VELOCIPEDES BICYCLES AND TRICYCLES"

Book: "VELOCIPEDES BICYCLES AND TRICYCLES HOW TO MAKE , AND HOW TO USE THEM" (London, George Routledge & Sons, 1869). Fair condition. Estimate: 150.00 - 200.00



317a Custom Made Bookshelf

Custom made bicycle wheel motif bookshelf. 34" x 11" x 11". Good condition. Ed Berry Collection. Estimate: 50.00 - 75.00



318 Klaxon Bicycle Horn

Vintage Klaxon bicycle horn. Works. Estimate: 50.00 - 75.00



321a Star Sheet Music Lot

Lot (2) pieces of Star High Wheel sheet music "Star Rider". Good condition. Ed Berry Collection. Estimate: 50.00 - 75.00



31st Annual Bicycle Auction, October 21, 2023 10/21/2023**LOT #**

322 Book: The Velocipede

Book: "The Velocipede" (1869, New York: Published By Hurd And Houghton). Fair condition, some restoration. Ed Berry Collection. Estimate: 150.00 - 200.00

**323 Book: The Velocipede**

Book: "The Velocipede How To Ride A Velocipede Straddle A Saddle Then Paddle & Skedaddle" (25 illustrations, London 1869). Fair condition. Ed Berry Collection. Estimate: 150.00 - 200.00

**324 Book: THE WHEELMAN'S ANNUAL FOR 1882"**

Book: "THE WHEELMAN'S ANNUAL FOR 1882" (Salem, Mass., J.P. Burbank, Publisher, 1882". Fair condition. Ed Berry Collection. Estimate: 150.00 - 200.00

**325 Book: Histoire Generale de la Velocipede**

Book: "Histoire Generale de la Velocipede" (Paris, 1891). Fair condition. Ed Berry Collection. Estimate: 150.00 - 200.00

**325a Bicycle Postcards**

Lot (42) early bicycle related postcards. Good condition. Ed Berry Collection. Estimate: 50.00 - 75.00

**326 Book: The Modern Bicycle"**

Book: "THE MODERN BICYCLE" (Warne's Useful Books, by Charles Spencer, London, 1876). Rear cover loose, fair condition. Ed Berry Collection. Estimate: 50.00 - 100.00

**326a Book Lot**

Lot (3) books including: Legends of the Wheel (by Arthur Waugh, London), Yankee Schoolboys Abroad (1892), Around The World On Wheels (1898). Fair-good condition. Ed Berry Collection. Estimate: 50.00 - 75.00

**327 Book: Nauticus On His Hobby Horse**

Book: "Nauticus On His Hobby Horse" (London, 1880). Fair condition. Ed Berry Collection. Estimate: 150.00 - 200.00

**328 Pamphlet: HOW TO RIDE A BICYCLE"**

Early pamphlet "HOT TO RIDE A BICYCLE". Fair condition. Ed Berry Collection. Estimate: 50.00 - 75.00

**329 Velocipede Pamphlet**

Early pamphlet "THE VELOCIPEDE ITS HISTORY AND HOW TO USE IT". 1869. Fair condition. Ed Berry Collection. Estimate: 50.00 - 75.00

**330 Wooden Bicycle Stand**

Rare wooden folding bicycle stand. Labeled "FIN-DE-CYCLE...GT. BARRINGTON MASS.". Good condition. Provenance: Ed & Marion Gerling Collection. Estimate: 300.00 - 400.00

**330a Rare Star Photo Stamp**

Ephemera lot including rare Star Photo stamp, Star Bicycles card, die cut, trade card, The Star card. Good condition. Ed Berry Collection. Estimate: 50.00 - 75.00



31st Annual Bicycle Auction, October 21, 2023 10/21/2023

LOT #

331 Hironnelle Stetienne Lightweight Bicycle

Hironnelle Stetienne lightweight road bicycle. Good condition. Provenance: Lane Motor Museum, Nashville TN.. Estimate: 150.00 - 200.00



335a Star Bicycle Ephemera Lot

Lot including Star and Columbia Bicycles letterhead, envelope with Star, Bicycles Tricycles catalogue. Good condition. Ed Berry Collection. Estimate: 50.00 - 75.00



332 Brent Trimble Advanced Composite Bicycle

Brent Trimble Advanced Composite bicycle. Shimano Deore crank set. Rock Shox. Good condition. Provenance: Lane Motor Museum, Nashville TN.. Estimate: 150.00 - 250.00



336 Raleigh Sports Lightweight Bicycle

Raleigh Sports lightweight bicycle. Good condition. Bottechia light weight bicycle. Campagnolo crank set. 24". Campagnolo rims. No pedals. Good condition. Provenance: Lane Motor Museum, Nashville TN.. Estimate: 100.00 - 150.00



333 Kestral 500 SC Bicycle

Kestral 500 SC bicycle. Shimano crank set. Sun rims. No pedals. Good condition. 24" frame. Provenance: Lane Motor Museum, Nashville TN.. Estimate: 200.00 - 400.00



337 Urban Ryder Bicycle

Urban Ryder bicycle. Good condition. Provenance: Lane Motor Museum, Nashville TN.. Estimate: 50.00 - 75.00



333a Bound News & Views

Bound News & Views, Vol. 263-389 (4 small, 9 large). Good condition. Ed Berry Collection. Estimate: 50.00 - 75.00



338 Bicycle Frame Lot

Lot (3) bicycle frames including Calfee, Seven elium SLX, Fuji. Good condition. Provenance: Lane Motor Museum, Nashville TN.. Estimate: 75.00 - 100.00



334 Bickerton Portable Bicycle

Bickerton Portable bicycle. Good condition. Provenance: Lane Motor Museum, Nashville TN.. Estimate: 75.00 - 100.00



339 Misc. Lot

Lot including (2) Col. Pope paperweights, Pope brass tip tray, cyclist cups, safety photograph frame, The New Departure spoon. Fair-good condition. Collection of Margaret Ann Baker. Estimate: 50.00 - 75.00



335 Handybike Commuter Bicycle

Handybike commuter bicycle. Good condition. Provenance: Lane Motor Museum, Nashville TN.. Estimate: 75.00 - 100.00



340 Bicycle Lamp Lot

Lot (3) bicycle lamps including Fire Ball, Favorite, Lucas No. 344 (3" Ht.). Fair condition. Collection of Margaret Ann Baker. Estimate: 75.00 - 100.00



31st Annual Bicycle Auction, October 21, 2023 10/21/2023**LOT #****340a Ephemera Lot**

Lot of bicycle ephemera including cutouts, letterheads, envelopes, receipts, etc.. Ed Berry Collection. Estimate: 50.00 - 75.00

**346 Misc. Lot**

Lot including noise maker, (2) lights with battery cans. Fair-good condition. Collection of Margaret Ann Baker. Estimate: 50.00 - 75.00

**341 Bicycle Lamp Lot**

Lot (5) bicycle lamps including PK800, Banner, The Neverout, B & R Sparkler, Twentieth Century. Tallest 6 3/4" Ht.. Fair-good condition. Collection of Margaret Ann Baker. Estimate: 75.00 - 100.00

**347 Hard Tire Safety Bicycle Lamp**

Hard tire safety bicycle lamp "Invincible" (made in England), 6 1/2" Ht.. Good condition. Collection of Margaret Ann Baker. Estimate: 150.00 - 200.00

**342 Bicycle Cyclometers**

Lot (4) bicycle cyclometers including Spalding, Century, (2) Veeder. Good condition. Collection of Margaret Ann Baker. Estimate: 50.00 - 75.00

**348 Bicycle Lamp Lot**

Lot (2) bicycle lamps including Majestic and Scharlach's. Tallest 8" Ht.. Good condition. Collection of Margaret Ann Baker. Estimate: 75.00 - 100.00

**343 Bicycle Lamp Lot**

Lot (3) bicycle lamps including Twentieth Century, British Made Millers Realite, Impex. Tallest 6 1/2" Ht.. Good condition. Collection of Margaret Ann Baker. Estimate: 75.00 - 100.00

**349 Bicycle Lamp Lot**

Lot (2) boxed bicycle lamps including 20th Century and Powell & Hanmer Ripper. Good condition. Boxes as found. Tallest 7" Ht.. Collection of Margaret Ann Baker. Estimate: 75.00 - 100.00

**344 Bicycle Lamp Lot**

Lot (2) Search Light bicycle lamps. Tallest 5 1/4" Ht.. Good condition. Collection of Margaret Ann Baker. Estimate: 75.00 - 100.00

**350 Bicycle Lamp Lot**

Lot (2) I.C. bicycle lamps. 6" Ht.. Good condition. Collection of Margaret Ann Baker. Estimate: 75.00 - 100.00

**345 Solar Bicycle Lamp**

Brass Solar bicycle lamp. 7" Ht.. Good condition. Collection of Margaret Ann Baker. Estimate: 75.00 - 100.00

**351 Bicycle Lamp Lot**

Lot (3) bicycle lamps including I.C., ASP, Germania. Tallest 7" Ht.. Fair-good condition. Collection of Margaret Ann Baker. Estimate: 75.00 - 100.00



31st Annual Bicycle Auction, October 21, 2023 10/21/2023**LOT #****352 Bicycle Lamp Lot**

Lot (5) brass bicycle lamps including The Neverout, Unique (M.B. Mfg. Co.), The Evertlit, Atwood Light, The Neverout. Tallest 7" Ht.. Good condition. Collection of Margaret Ann Baker. Estimate: 75.00 - 100.00

**353 Bicycle Candle Lamps**

Lot (2) different bicycle candle lamps. Tallest 9" Ht.. Good condition. Collection of Margaret Ann Baker. Estimate: 75.00 - 100.00

**354 Bicycle Lamp Lot**

Lot (3) bicycle lamps including Continent (Wanamaker), (2) Columbia. 6" Ht.. Fair-good condition. Collection of Margaret Ann Baker. Estimate: 75.00 - 100.00

**355 Bicycle Lamp Lot**

Lot (4) bicycle lamps including B & R, Electro, Diamond (Rochester), Powell & Hanmer (no glass). Tallest 7" Ht.. Collection of Margaret Ann Baker. Estimate: 75.00 - 100.00

**355a Book Lot**

Lot (3) books including: Von Radeln, I.V.C.A. 1991-93, 1-6, German Auction No. 1-10. Good condition. Ed Berry Collection. Estimate: 50.00 - 75.00

**356 Bicycle Lamp Lot**

Lot (8) bicycle lamps including Lucas Silver King, H. Miller Co., Sardar, Argonaut (2), Silver King, Katy, unmarked. Tallest 5 1/2" Ht.. Fair-good condition. Collection of Margaret Ann Baker. Estimate: 75.00 - 100.00

**357 Schwinn Sting-Ray Fastback Bicycle**

Schwinn Sting-Ray Fastback bicycle. Good condition. Provenance: Lane Motor Museum, Nashville TN.. Estimate: 250.00 - 350.00

**358 Bicycle Bell Lot**

Lot (8) early bicycle bells. Brass tops. Some marked King of The Road. Good condition. Collection of Margaret Ann Baker. Estimate: 50.00 - 75.00

**359 Bicycle Lamp Lot**

Lot of as found project bicycle lamps. Collection of Margaret Ann Baker. Estimate: 50.00 - 75.00

**360 Pneumatic Safety Racing Bicycle**

Pneumatic safety racing bicycle. 24". Brooks saddle. Wooden rims. Good condition. Provenance: Ed & Marion Gerling Collection. Estimate: 300.00 - 400.00

**361 Bicycle Motif Lamps**

Bicycle motif table lamp. 19" overall Ht.. Good condition, along with ceramic bicycle motif lamp "LOVERS LANE" (10" W., 6" Ht., good condition). Estimate: 50.00 - 75.00

**362 Child's Seat**

C. 1896 Brownie child's seat. Patented 1896. 20" L.. Fair-good condition. Estimate: 50.00 - 75.00

**363 Two Chain Guards**

Lot (2) early bicycle chain guards. One "CRESCENT", the other enclosed. Fair-good condition. Estimate: 50.00 - 75.00



31st Annual Bicycle Auction, October 21, 2023 10/21/2023

364 Victorian Bottle with Lady on Safety Bicycle

Victorian blue glass bottle with lady on safety bicycle. 9" Ht.. Good condition. Estimate: 40.00 - 60.00



371 19th c. Print "MODERN PEGASUS"

19th c. print "MODERN PEGASUS or Dandy Hobbies in full Speed" (dated 1819). Features figures on hobby horses. Sight 9" x 13", overall 15 1/2" x 18". Good condition. Estimate: 50.00 - 75.00



365 Mary Gregory Glassware Set

Mary Gregory cobalt blue glassware set including (2) 5" shakers, 6" pitcher, bell, (4) glasses, 7 1/2" pitcher, cruet. Good condition. Estimate: 150.00 - 200.00



372 Celluloid Dresser Box

Victorian celluloid dresser box. Figure with safety bicycle on lid. 10" x 6 1/2" x 3". Good condition. Estimate: 40.00 - 60.00



366 Porcelain Bicycle Plates

Lot (5) porcelain bicycle plates. Largest 5 1/2" D.. Includes "Bombay Bicycle Club". Good condition. Estimate: 25.00 - 50.00



373 Cabinet Card Photograph Album

Victorian cabinet card photograph album. Safety rider on lid. 11 1/2" x 9". Good condition. Estimate: 40.00 - 60.00



367 Electric Lamp

Early electric lamp. Labeled "BROWN, OPTICIAN GLASGOW". 6" Ht.. Good condition. Estimate: 150.00 - 200.00



374 Bicycle Clock

Early cast iron bicycle clock, woman with safety bicycle. 12" Ht.. Good condition, clock doesn't operate. Estimate: 75.00 - 100.00



368 Bicycle Lamps

Lot (2) brass Electro bicycle lamps. Tallest 6 1/4" Ht.. Good condition. Estimate: 75.00 - 100.00



375 Bicycle Watches

Lot (3) bicycle motif watches. One "RELIC" in box, (2) "IMAGES". Good condition. Not tested. Estimate: 50.00 - 75.00



369 Bicycle Lamps

Lot (2) bicycle lamps including Radsonne and Jim Dandy. Tallest 6" Ht.. Good condition. Estimate: 75.00 - 100.00



370 Currier & Ives Print

19th c. Currier & Ives print "THE GRACES OF THE BICYCLE". Featuring figures on high wheel bicycles. Sight 12 1/2" x 16 1/2", overall 14" x 18". Good condition. Estimate: 50.00 - 75.00



376 Misc. Lot

Lot including contemporary pewter frame with cyclist (8" Ht.), contemporary dresser box "CYCLES GLADIATO" (9" W.), vintage Ezra Brooks bottle (10 1/4" Ht.), decorative statue of lady with safety bicycle (10 1/2" Ht.), and bicycle clock (14" Ht., handlebar broken). Estimate: 50.00 - 75.00



31st Annual Bicycle Auction, October 21, 2023 10/21/2023**LOT #****376a Book Lot**

Book lot including "Sixty Poets ON THE WHEEL (J.G. Dalton, 1885), and Romances Of The Wheels. Fair-good condition. Ed Berry Collection. Estimate: 50.00 - 75.00

**377 Misc. Lot**

Lot including Mary Gregory style cruet (7" Ht.), and drinking glass set in carrier. Good condition. Estimate: 50.00 - 75.00

**377a Book: Le Cyclisme**

Book" LE CYCLISME (L. BAUDRY DE SAUNIER). Fair condition. Ed Berry Collection. Estimate: 50.00 - 75.00

**378 Decanter**

Mary Gregory style decanter. 13" Ht.. Good condition. Estimate: 50.00 - 75.00

**379 Royal Doulton Bunnykins Lot**

Lot (3) pieces of Royal Doulton Bunnykins china. Includes cup, 8 1/2" plate, 7 1/2" bowl. Good condition. Estimate: 40.00 - 60.00

**380 Mary Gregory Glassware Set**

Mary Gregory style pitcher and (2) glasses. Pitcher 11 3/4" Ht.. Good condition. Estimate: 150.00 - 200.00

**381 Bicycle Steins**

Lot (2) steins including "ALL HEIL" (marked Thewalt, 9 3/4" Ht.), and female safety rider (8 1/2" Ht.). Good condition. Estimate: 75.00 - 100.00

**382 Glass Pitcher with Tandem Scene Lot**

Glass pitcher with tandem scene. 13" Ht.. Good condition, along with ceramic frog pitcher (6" Ht., some staining). Estimate: 40.00 - 60.00

**383 Victorian Vase**

Victorian blue ruffled vase with cyclist. 8 1/2" Ht.. Damage to base. Estimate: 40.00 - 60.00

**384 Majolica Pitcher**

Early Majolica ceramic pitcher with cyclists. 8 1/4" Ht.. Estimate: 50.00 - 75.00

**385 Cigar Holder**

Early bisque cigar holder. Female safety rider. 8 1/2" Ht.. Good condition. Estimate: 50.00 - 75.00

**386 Misc. Lot**

Lot including ceramic ashtray with cyclists and brass lid bowl. Good condition. Estimate: 25.00 - 35.00

**387 Bicycle Trophys**

Lot (3) bicycle trophy's including 1895 Road Race, 1983 Road Race and Half Mile Road Race. Tallest 14" Ht.. Fair-condition. Estimate: 100.00 - 150.00

**387a Book: Pedal And Path**

Book: Pedal and Path (George B. Thayer, 1887). Fair condition. Ed Berry Collection. Estimate: 25.00 - 50.00



31st Annual Bicycle Auction, October 21, 2023 10/21/2023

LOT #

388 Bicycle Bottles

Lot (4) bicycle bottles including Coventry, (3) R. Emerson, Newcastle. Tallest 11" Ht.. (2) with imperfections. Estimate: 40.00 - 60.00



389 Pair Wooden Spoked Wheels

Pair of early wooden spoked wheels. 25" D.. Estimate: 100.00 - 150.00



389a Book Lot

Book lot including: Wheel Magic (J. Wallen), Lyra Bicyclica (J.G. Dalton, 1880), The Bards And The Bicycle (1897). Fair-good condition. Ed Berry Collection. Estimate: 50.00 - 75.00



390 Columbia Hard Tire Safety Bicycle

Columbia hard tire safety bicycle. Wooden handlebars. Need tires and saddle. Good condition. Ed & Marion Gerling Collection. Estimate: 800.00 - 1,200.00



391 Bicycle Pinbacks Lot

Bicycle pinbacks lot (20) including Stearns, Crawford, Syracuse, Ben Hur, Keating etc.. Also (3) head badges (Crawford). Case included. Margaret Anne Baker Collection. Estimate: 50.00 - 75.00



392 Showcase Lot

Showcase lot including medals, pinbacks, Wheelmen pins. Case included. Margaret Anne Baker Collection. Estimate: 50.00 - 75.00



393 Showcase Lot

Showcase lot including enameled Wheelmen buttons, Gormully & Jeffery and Iver Johnson wrenches, Orient spoon etc.. Case included. Margaret Anne Baker Collection. Estimate: 50.00 - 75.00



394 Showcase Lot

Showcase lot including wrenches, Rambler pin, (5) medals (mostly Century Wheelmen). Case included. Margaret Anne Baker Collection. Estimate: 50.00 - 75.00



395 Showcase Lot

Lot (3) showcases including Crawford envelopes, James and Ann Baker Wheelmen cards, Pocket map, Wheelmen pins, cycle locks, (2) Lodge ribbons. Cases included. Margaret Anne Baker Collection. Estimate: 50.00 - 75.00



396 Showcase Lot

Lot (11) showcases filled with various Wheelmen items from Ann & Jim Baker. Includes ribbons, medallions, ephemera, pamphlets etc.. Cases included. Margaret Anne Baker Collection. Estimate: 50.00 - 100.00



397 Showcase Lot

Lot (4) showcases with early bicycle ribbons. Mostly Maryland with some other states. Cases included. Margaret Anne Baker Collection. Estimate: 50.00 - 100.00



398 Showcase Lot

Lot (5) showcases with early bicycle ribbons (and loose group). Cases included. Margaret Anne Baker Collection. Estimate: 50.00 - 100.00



31st Annual Bicycle Auction, October 21, 2023 10/21/2023**LOT #****399 Wheelmen Stein**

League of American Wheelmen litho pane stein with pewter lid. Marked Musterschutz Made in Germany. 7" Ht.. Good condition. Margaret Anne Baker Collection. Estimate: 75.00 - 100.00

**400 Bicycle Horns Lot**

Lot (7) early bicycle horns. Good condition. Margaret Anne Baker Collection. Estimate: 50.00 - 75.00

**400a Ephemera Lot**

Ephemera lot including Century Winner cigar label, die cut (female on high wheel), 1898 "A CENTURY MAID" calendar, Clothier advertising (trick riders on high wheels). Good condition. Ed Berry Collection. Estimate: 50.00 - 75.00

**401 Bicycle Lamp Lot**

Lot (2) bicycle lamps including The Matthews & Willard Company (6 1/2" Ht.), Twentieth Century (7" Ht..). Good condition. Margaret Anne Baker Collection. Estimate: 75.00 - 100.00

**402 Bicycle Lamp Lot**

Lot (3) bicycle lamps including The Alladin, Yankee, Powell & Hanmer. Tallest 5" Ht.. Good condition. Margaret Anne Baker Collection. Estimate: 75.00 - 100.00

**403 Bicycle Lamp Lot**

Lot (3) bicycle lamps including The Union Mfg. Co., The Neverout, Columbia. Tallest 6 1/2" Ht.. Fair-good condition. Margaret Anne Baker Collection. Estimate: 75.00 - 100.00

**404 Bicycle Lamp Lot**

Lot (3) bicycle lamps including Seiss Light Weight, Pierce Matchless, Solar (Badger Brass Co.). Tallest 6 3/4" Ht.. Fair-good condition. Margaret Anne Baker Collection. Estimate: 75.00 - 100.00

**404a Book Lot**

Book lot including Cycling (H.H. Griffin), and The Art and Pastime of Cycling (R.J. Mcreddy & A.J. Wilson). Fair-good condition. Ed Berry Collection. Estimate: 50.00 - 75.00

**405 Hard Tire Safety Bicycle Lamp**

Hard tire safety bicycle lamp "LEADER NO. 2". 6" Ht.. Fair condition. Margaret Anne Baker Collection. Estimate: 150.00 - 200.00

**405a Gompertz Patent**

Mr. Lewis Gomperts Machines Draisine patent paper, along with article. Good condition. Ed Berry Collection. Estimate: 40.00 - 60.00

**406 Hard Tire Safety Bicycle Lamp**

Hard tire safety bicycle lamp "CYCLIGHT" (Miller & Co.), 6" Ht.. Fair condition. Collection of Margaret Ann Baker. Estimate: 150.00 - 200.00

**407 Lightning Scooter Sled**

Early Lightning Scooter child's sled. Good condition. Collection of Margaret Ann Baker. Estimate: 50.00 - 75.00



31st Annual Bicycle Auction, October 21, 2023 10/21/2023

LOT #

408 Irish Mail

Early Irish Mail scooter. Good condition.
Collection of Margaret Ann Baker.
Estimate: 50.00 - 75.00



409 19th c. Velocipede Tricycle

19th c. painted wooden velocipede tricycle.
Original paint. 22" front wheel, 20" rear
wheels. Good condition. Collection of
Margaret Ann Baker. Estimate: 150.00 -
250.00



410 Bicycle Bell Lot

Lot of various bicycle bells and tops.
Fair-good condition. Collection of Margaret
Ann Baker. Estimate: 50.00 - 75.00



410a Bicycle Ephemera Lot

Lot (9) pieces of Penna. bicycle ephemera
including L.A.W., letterheads. Good
condition. Ed Berry Collection. Estimate:
40.00 - 60.00



411 Bicycle Bell Lot

Lot of various bicycle bells. Fair-good
condition. Collection of Margaret Ann
Baker. Estimate: 50.00 - 75.00



411a Book Lot

Book lot including: Bicycling through Time,
Le Musee de la petite Reine, Collecting &
Restoring Antique Bicycles (G. Donald
Adams), The Bicycle (Pryor Dodge). Good
condition. Ed Berry Collection. Estimate:
50.00 - 75.00



412 Misc. Lot

Lot wooden lamp, pair grips, brass cap etc..
Collection of Margaret Ann Baker.
Estimate: 25.00 - 50.00



413 Bicycle Bottles

Lot (4) bicycle bottles including Coventry,
(3) Emerson. Tallest 10" Ht.. Good
condition. Collection of Margaret Ann
Baker. Estimate: 50.00 - 75.00



414 Postcard Lot

Album with vintage bicycle postcards,
photographs, ephemera. Collection of
Margaret Ann Baker. Estimate: 25.00 - 50.00



415 Tricycle Lot

Lot including vintage tricycle and child's
three wheel scooter. Fair-good condition.
Collection of Margaret Ann Baker.
Estimate: 50.00 - 75.00



416 19th c. Ceramic Mug

19th c. ceramic mug with figures on
velocipedes. 5 "Ht.. Good condition. Ed
Berry Collection. Estimate: 75.00 - 100.00



417 Tricycle Bell

Rare early tricycle bell. Has damage. 3 1/2"
Ht.. Ed Berry Collection. Estimate: 75.00 -
100.00



418 H.B. Smith Advertising Frog

Scarce cast iron desk frog marked "H. B.
SMITH MACHINE CO. SMITHVILLE N.J."
(on lid) and "MAKERS OF WOOD & IRON
WORKING MACHINERY". 4" L., good
condition. Ed Berry Collection. Estimate:
200.00 - 300.00



31st Annual Bicycle Auction, October 21, 2023 10/21/2023**419 Bicycle Pump / Wrench Combination Tool**

Rare bicycle pump / wrench tool. Marked "DODGE CYCLE TOOL". 5 1/4" Ht.. Good condition. Ed Berry Collection. Estimate: 75.00 - 100.00

**425 Bugatti Lightweight Bicycle**

Bugatti lightweight Grand Prix road bicycle. Made in Italy. 25" frame. No saddle. The Bugatti name was used legally during the 1973-1975 run. Estimate: 150.00 - 200.00

**420 Kohler Bicycle Signal Horn**

Kohler bicycle signal horn. 6" L.. Good condition. Ed Berry Collection. Estimate: 50.00 - 75.00

**426 Bugatti Commuter Bicycle**

Bugatti commuter bicycle. 16" frame. Made in Italy. Good condition. The Bugatti name was used legally during the 1973-1975 run. Estimate: 100.00 - 150.00

**421 Tiller Tricycle**

Early tiller tricycle. 20" rear wheels, 12" front wheel. Good condition. Wear to seat. Provenance: Ed & Marion Gerling Collection. Estimate: 75.00 - 100.00

**427 Bugatti Lightweight Bicycle**

Bugatti child's lightweight road bicycle. 16" frame. Made in Italy. Good condition. The Bugatti name was used legally during the 1973-1975 run. Estimate: 150.00 - 200.00

**421a Misc. Lot**

Misc. lot including Shelly China headlamp, glass slide with velocipede, Cyclists Touring Club badge, metal bracket. Ed Berry Collection. Estimate: 25.00 - 50.00

**428 Bugatti Lightweight Bicycle**

Bugatti lightweight road bicycle. 24" frame. Made in Italy. Good condition. The Bugatti name was used legally during the 1973-1975 run. Estimate: 150.00 - 200.00

**422 Bugatti Lightweight Bicycle**

Bugatti lightweight road bicycle. Made in Italy. 22" frame. Good condition. The Bugatti name was used legally during the 1973-1975 run. Estimate: 150.00 - 200.00

**429 Bugatti Lightweight Bicycle**

Bugatti lightweight road bicycle. 24" frame. Made in Italy. Good condition. No saddle. The Bugatti name was used legally during the 1973-1975 run. Estimate: 150.00 - 200.00

**423 Bugatti Lightweight Bicycle**

Bugatti lightweight child's road bicycle. Made in Italy. 16" frame. Good condition. The Bugatti name was used legally during the 1973-1975 run. Estimate: 150.00 - 200.00

**430 Bugatti Child's Bicycle**

Bugatti child's bicycle. 13" frame. Made in Italy. Good condition. The Bugatti name was used legally during the 1973-1975 run. Estimate: 75.00 - 100.00

**424 Bugatti Lightweight Bicycle**

Bugatti lightweight road bicycle. Made in Italy. 21" frame. Good condition. The Bugatti name was used legally during the 1973-1975 run. Estimate: 150.00 - 200.00



31st Annual Bicycle Auction, October 21, 2023 10/21/2023

LOT #

431 Bugatti Child's Bicycle

Bugatti child's bicycle. 13" frame. Made in Italy. Good condition. The Bugatti name was used legally during the 1973-1975 run. Estimate: 75.00 - 100.00



432 Bugatti Commuter Bicycle

Bugatti commuter bicycle. 16" frame. Made in Italy. Good condition. The Bugatti name was used legally during the 1973-1975 run. Estimate: 100.00 - 150.00



432a Book Lot

Book lot including Four Score Years Of Sport (Walter G. Kendall), and Ten Thousand Miles On A Bicycle (Karl Kron, Pledge No. 3102, autographed edition). Fair-Good condition. Ed Berry Collection. Estimate: 50.00 - 75.00



433 Bicycle Stands

Lot of (6) metal bicycle stands. Good condition. Estimate: 25.00 - 50.00



434 Strap Steel Tricycle

Early strap steel tricycle. 20" front wheel. Good condition. Margaret Anne Baker Collection. Estimate: 75.00 - 100.00



435 Strap Steel Tricycle

Early strap steel tricycle. 20" front wheel. Good condition. Margaret Anne Baker Collection. Estimate: 75.00 - 100.00



436 Tricycle Lot

Lot including early strap steel tricycle (14" front wheel, fair condition), and decorative high wheel. Margaret Anne Baker Collection. Estimate: 50.00 - 75.00



437 Strap Steel Tricycle

Early strap steel tricycle. 20" front wheel. Good condition. Margaret Anne Baker Collection. Estimate: 75.00 - 100.00



438 Tiller Tricycle

Early tiller tricycle. 23" rear wheels, 15" front wheel. Good condition. Margaret Anne Baker Collection. Estimate: 100.00 - 150.00



439 Strap Steel Tricycle

Early strap steel tricycle. 28" front wheel. Good condition. Margaret Anne Baker Collection. Estimate: 75.00 - 100.00



440 Strap Steel Tricycle

Early strap steel tricycle. 20" front wheel. Good condition. Margaret Anne Baker Collection. Estimate: 75.00 - 100.00



441 Strap Steel Tricycle

Early strap steel tricycle. 20" front wheel. Good condition. Margaret Anne Baker Collection. Estimate: 75.00 - 100.00



442 Colson Tricycle

Early tricycle "The Colson Brown" (Elyria Ohio). 19 1/2" front wheel. Good condition. Margaret Anne Baker Collection. Estimate: 75.00 - 100.00



31st Annual Bicycle Auction, October 21, 2023 10/21/2023**LOT #****443 Colson Tricycle**

Vintage Colson tricycle. 20" front wheel.
Good condition. Margaret Anne Baker
Collection. Estimate: 50.00 - 75.00

**446a Wheelmen Bound Magazines**

Wheelman bound magazines. (13) books
and die. Good condition. Good condition.
Ed Berry Collection. Estimate: 50.00 - 75.00

**444 Pre-War Iver Johnson Bicycle**

Pre-War Iver Johnson bicycle. 20" frame.
Mesinger saddle. Nice original condition.
Margaret Anne Baker Collection. Estimate:
150.00 - 200.00

**447 Showcase Lot**

Showcase lot including head badges,
salesman sample tool bag, etc.. Case
included. Margaret Anne Baker Collection.
Estimate: 50.00 - 75.00

**444a Sheet Music Lot**

Lot (3) pieces of early sheet music
including A Mile A Minute, Bicycle Glide,
Daredevil. Good condition. Features high
wheels and safety bicycle. Ed Berry
Collection. Estimate: 50.00 - 75.00

**447a Book Lot**

Book lot including Les Bicyclettes, The
Dancing Chain, Deux Roues, Du
velocipede..., Mit dem Rad...". Good
condition. Ed Berry Collection. Estimate:
25.00 - 50.00

**445 Iver Johnson Pneumatic Safety Bicycle**

Iver Johnson pneumatic safety bicycle. 22"
frame. Nice paint combination. Good
condition. Margaret Anne Baker Collection.
Estimate: 200.00 - 300.00

**448 Showcase Lot**

Showcase lot, (2) including "THE CYCLIST
CHRISTMAS 1885", pocket maps, trade
cards, John Players & Son cycling tobacco
cards, along with booklet "A BICYCLIST'S
DREAM....". Margaret Anne Baker
Collection. Estimate: 50.00 - 75.00

**445a Book Lot**

Book lot including: Le Velocipede Illustre
(Claude Reynaud, Tome I, 2), Le monde du
Velo (Du May), le velocipede (Silvana
Editoriale). Good condition. Ed Berry
Collection. Estimate: 50.00 - 75.00

**449 Bicycle Pinbacks Lot**

Bicycle pinbacks lot including (21) items
including pinbacks, Penny Farthings. Case
included. Margaret Anne Baker Collection.
Estimate: 50.00 - 75.00

**446 Columbia RX 5 Reissue Bicycle**

Columbia RX 5 reissue bicycle in box.
Margaret Anne Baker Collection. Estimate:
150.00 - 250.00

**449a Book Lot**

Lot (3) books including: Over The Handles
And Other Cycling Sketches (1880),
Cycling Humours (London, 1897), Rhymes
Of The Road And River (Chris Wheeler,
1885). Good condition. Ed Berry Collection.
Estimate: 50.00 - 75.00



31st Annual Bicycle Auction, October 21, 2023 10/21/2023**LOT #****450 Bicycle Pinbacks Lot**

Bicycle pinbacks lot. Over (30) including Stearns, Crescent, Ajax, Syracuse, The Colonial etc.. Also (2) head badges (Packard), 1992 Maple Leaf festival pendant. Case included. Margaret Anne Baker Collection. Estimate: 50.00 - 75.00

**450a Book "Fancy Cycling"**

Book: Fancy Cycling (Isabel Marks 1901). Good condition. Ed Berry Collection. Estimate: 50.00 - 75.00

**451 Schwinn Fastback Bicycle**

Schwinn Fastback bicycle. Purple. Barn find. As found. Estimate: 50.00 - 100.00

**452 Harvard Pneumatic Safety Bicycle**

Harvard Pneumatic Safety bicycle. 22" frame. Barn find condition, nice paint. Estimate: 300.00 - 400.00

**453 1950's Ludwig Bicycle**

1950's Ludwig balloon tire bicycle. 19" frame. Good condition. Comes with license plate and bell. Estimate: 100.00 - 150.00

**454 1940's Rollfast Bicycle**

1940's Rollfast balloon tire bicycle. Rear carrier, 20" frame. Fair condition. Estimate: 100.00 - 150.00

**455 1950's Schwinn Hornet Bicycle**

1950's Schwinn balloon tire bicycle. 17" frame. Fair condition. Estimate: 100.00 - 150.00

**456 C. 1940's Shelby Bicycle**

C. 1940's Shelby Flying Cloud bicycle. Original condition, nice chrome. 20" frame. Estimate: 100.00 - 150.00

**457 Columbia Pneumatic Safety Bicycle**

Columbia pneumatic safety Model 41 bicycle. Barn find condition. Estimate: 300.00 - 400.00

**458 Persons Work Stand**

Persons bicycle work stand. Good condition. Estimate: 50.00 - 75.00

**458a Frank Patterson Book Lot**

Lot of Frank Patterson books and autographed postcard. Good condition. Ed Berry Collection. Estimate: 50.00 - 75.00

**459 Bicycle Lights Lot**

Lot of vintage bicycle headlights and tail lights. Estimate: 150.00 - 200.00

**460 Battery Can & Headlight**

Old Sol battery can and headlight. Fair-good condition. Estimate: 75.00 - 100.00

**461 Motorcycle Horn Lot**

Lot (3) vintage motorcycle horns (one a pancake horn). Fair-good condition. Estimate: 75.00 - 100.00

**462 Bicycle Headlights**

Lot of vintage bicycle headlights and parts. Fair-good condition. Estimate: 100.00 - 150.00



31st Annual Bicycle Auction, October 21, 2023 10/21/2023

463 Lot of Vintage Seats and Parts

Lot of vintage seats and parts. Fair-good condition. Estimate: 75.00 - 100.00



470 Speedometer Lot

Lot of vintage Schwinn bicycle speedometers and cables. Estimate: 100.00 - 150.00



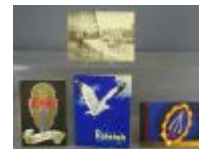
464 Porcelain Columbia Ave. Sign

Early porcelain Columbia Ave. sign. 4 1/2" x 18". Fair condition. Estimate: 50.00 - 75.00



471 British Bicycle Catalogs

Lot (4) vintage British bicycle catalogs including Rudge-Whitworth, Armstrong, 1934 BSA, Raleigh. Good condition. Estimate: 75.00 - 100.00



465 Harley Davidson Cardboard Logo

Vintage Harley Davidson cardboard logo. 25" x 18 1/2". Fair condition. Estimate: 100.00 - 200.00



472 Bicycle Ephemera Lot

Lot of vintage bicycle ephemera including Columbia flyers and catalogs. Fair-good condition. Estimate: 50.00 - 75.00



466 Ephemera Lot

Lucky Thibeault promo lot. Famous "Wall of Death" daredevil. Frame 16" x 20". Good condition. Estimate: 50.00 - 100.00



473 1939 Westfield Bicycles Foldout

1939 Westfield Bicycles foldout. Good condition. Estimate: 25.00 - 50.00



467 Motorcycle Poster

Original 1946 World of Mirth motorcycle poster featuring "Flash White". Poster 21 1/2" x 14". Good condition. Estimate: 100.00 - 200.00



474 Fay Bicycle Catalogs

Lot (2) vintage Fay bicycle catalogs. 1915, 1916. Fair-good condition. Estimate: 50.00 - 75.00



468 Harley Davidson Sign

Harley Davidson tin enamel chalkboard sign "Harley Davidson Motor Oil". 23 1/2" x 17 1/2". Good condition. Estimate: 200.00 - 300.00



475 Monarch Bicycle Catalogs

Two Monarch Bicycles catalogs. 1903-1917. Fair-good condition. Estimate: 50.00 - 75.00



469 1939 World's Fair License Plate

1939 World's Fair license plate. 6 1/4" x 14". Good condition. Estimate: 50.00 - 75.00



476 Tribune Bicycle Catalogs

Lot (5) Tribune bicycle catalogs. 1916, 1908, 1905, 1904. Fair condition. Some covers loose. Estimate: 50.00 - 75.00



31st Annual Bicycle Auction, October 21, 2023 10/21/2023**LOT #****477 Rambler Bicycle Catalogs**

Lot (4) Rambler bicycle catalogs. 1908, 1915 (2), 1916. Fair condition. Some hole punched. Estimate: 50.00 - 75.00

**478 Imperial Bicycle Catalogs**

Lot (4) Imperial Bicycle catalogs. 1915, 1916, 1905, 1914. Fair condition. Hole punched. Estimate: 50.00 - 75.00

**478a Bicycle Bell**

Early bicycle bell with embossed lion. Works, good condition. Estimate: 40.00 - 60.00

**479 Crescent Bicycle Catalogs**

Lot (5) Crescent Bicycle catalogs. 1910, 1912, 1913, 1914, 1915, 1916. Fair condition. Hole punched. Estimate: 50.00 - 75.00

**480 Iver Johnson Patches**

Two NOS Iver Johnson patches. Good condition. Estimate: 25.00 - 35.00

**481 1895 Morgan & Wright Bicycle Catalog**

1895 Morgan & Wright catalogue of bicycle tires. 64pp, 4 1/4" W., 5 1/2" Ht.. Fair condition. Estimate: 25.00 - 50.00

**482 I.A. Weston & Co. Bicycle Catalog**

I.A. Weston & Co. Descriptive Circular and Price List of Safety Bicycle Wheels. 32pp, 5 3/8" W., 6" Ht.. Fair condition. Estimate: 25.00 - 50.00

**483 Niagara Cycles Catalog**

Niagara Cycles Buffalo Wheel Co. bicycle catalogue. 52", 5 3/4" W. x 8 3/4" Ht.. Fair condition. Estimate: 25.00 - 50.00

**484 1893 Gormully & Jeffery Bicycle Catalog**

1893 Gormully and Jeffery Rambler bicycles catalog. 52pp, 5 3/4" W. x 8 3/4" Ht.. Fair condition. Estimate: 50.00 - 75.00

**485 1895 Victor Bicycles Catalog**

Victor Bicycles 1895 catalogue. 36pp. 6 3/4" W. x 8 3/4" Ht.. Good condition. Estimate: 50.00 - 75.00

**486 Price List for Victor Bicycles**

Price list of parts of Victor Bicycles, 1893, 28 pp, 5 1/2" W. x 8 3/4" Ht.. Fair condition. Estimate: 25.00 - 50.00

**487 Victor and Victoria Parts List**

Revised Price List of Victor Bicycles, 1893, 28pp, 5 1/2" W. x 8 3/8". Fair condition. Estimate: 25.00 - 50.00

**488 1895 Rouse Hazard & Co. Bicycle Catalog**

1895 Rouse Hazard & Co. Bicycles catalog. 38pp, 9 1/8" W. x 6" Ht.. Fair condition. Estimate: 25.00 - 60.00

**489 The Ariel Cycle Catalog**

1895 The Ariel Cycle Co. catalogue. 16pp, 9 1/8" W. x 6" Ht.. Fair condition. Estimate: 25.00 - 50.00



31st Annual Bicycle Auction, October 21, 2023 10/21/2023

LOT #

490 Bicycle Catalogs

Lot (2) catalogs including: Hall-Shone Co., Catalogue of 18908 Bicycle Accessories, Parts and Fittings, 63pp, 5 1/2" W. x 8 1/8" Ht. and 11893 Discount Sheet on Bicycles, Sundries and Clothing, Hubert Bros. & Co., 19pp, 5 1/2" W. x 8 1/8" Ht.. Fair condition. Estimate: 25.00 - 50.00



491 1895 Black Mfg. Co. Catalog

1895 Black Mfg. Co. Makers of Tribunes Bicycles catalogue, 40pp, missing cover, 8" W., x 5 7/8" Ht.. Estimate: 25.00 - 50.00



492 1895 Majestic Bicycle Catalog

1895 Majestic Bicycle catalogue, 16pp, 6" W. x 9 1/8" Ht.. Fair condition. Estimate: 25.00 - 50.00



493 Eagle Bicycle Catalog

1895 Eagle Bicycle catalogue, 20pp, 7" W. x 8 1/2" Ht.. Fair condition. Estimate: 50.00 - 75.00



494 Crescent Bicycles 1895 Catalog

1895 Crescent Bicycles catalogue. 7 1/4" W., x 7 3/4" Ht.. Fair condition. Estimate: 25.00 - 50.00



495 Lovell Diamond Catalog Lot

Lot including Lovell Diamond Bicycles Special Price List for 1895, 16pp, 6" W. x 3 3/8" Ht. and 1895 Lovell Diamond Cycles catalogue, 36pp, 8 1/2" W. x 5 1/2" Ht., Lovell Diamond Bicycles Cycles June 1895 Shop-Worn & Second Hand Bicycles price list, 8 1/2" W. x 11" Ht., with illustrated mailing envelope (9 1/2" W. x 7 1/4" Ht.). Fair condition. Estimate: 25.00 - 50.00



496 Ephemera Lot

Lot including 1895 Illustrated List of Bicycle Sundries, Lovell Arms Co., 12pp, 9 1/4" W. x 11 1/2" Ht., 1894 Catalogue of Bicycles, E.C. Meacham Arms Co., 26pp, 8" W. x 11" Ht., Discount Sheet for 1895 Bicycle Sundries Catalogue, Hubert Bros. & Co. (2) copies, 9 1/2" W. x 12" Ht.. Fair condition. Estimate: 25.00 - 50.00



497 Veeder Cyclometer

Veeder cyclometer. Good condition. Estimate: 40.00 - 60.00



498 Veeder Cyclometer

Veeder cyclometer. Good condition. Estimate: 40.00 - 60.00



499 Veeder Cyclometer

Veeder cyclometer. Good condition. Estimate: 40.00 - 60.00



500 Velocipede Replica Model

20th Century Velocipede replica model. 16" L. 8" W., 8 1/4" Ht.. Estimate: 100.00 - 150.00



500a Book Lot

Lot (2) early books including: A Canterbury Pilgrimage and Tips For Tricyclists (Professor Hoffman 1888). Fair condition. Ed Berry Collection. Estimate: 50.00 - 75.00



501 Bicycle Model

Bicycle model. 19" x 12" Ht.. Good condition. Estimate: 50.00 - 75.00



31st Annual Bicycle Auction, October 21, 2023 10/21/2023

LOT #

502 Remington Arms Bicycle Advertising

Early Remington Arms bicycle advertising featuring Safety with Indian Head pennies. Philadelphia. Overall 4" x 6". Good condition. Estimate: 50.00 - 100.00



503 Mead Cycle Company Catalog

Mead Cycle Company bicycle catalog. Chicago "Wanderings Awheel". 1898. Good condition. Estimate: 50.00 - 75.00



504 Bicycle & Motorcycle Trade Cards

Bicycle & Motorcycle trade cards. John Player, JA Pattreiquez, Lambert & Butler. (30) examples. Good condition. Estimate: 25.00 - 50.00



505 C. 1900's Tricycle

C. 1900's tricycle. Good condition. 16" front wheel, 12" rear wheels. Provenance: Ed & Marion Gerling Collection. Estimate: 50.00 - 75.00



505a Book Lot

Lot (4) TOC bicycle books including The Bicycle Highwaymen, The Potterers Club, Legends of The Wheel, Duffersville. Fair-good condition. Ed Berry Collection. Estimate: 15.00 - 50.00



506 C. 1900's Tricycle

C. 1900's Columbia tricycle. 20" front wheel, 15" rear wheel. Good condition. Provenance: Ed & Marion Gerling Collection. Estimate: 50.00 - 75.00



507 Irish Mail

C. 1899 Irish Mail. "SPECIAL". Good condition. Provenance: Ed & Marion Gerling Collection. Estimate: 75.00 - 100.00



508 Pedal Lot

Lot over (30) sets of pedals including Campagnolo, Look, Exus, Shimano, Suntour, BRC, Wellgo, NOS crankbrothers MXR Egg Beater. Estimate: 50.00 - 100.00



509 Schwinn Bicycle

Schwinn bicycle. As found, along with a Specialized bicycle (as found). Estimate: 10.00 - 20.00



510 Tiller Tricycle

Early tiller tricycle. 24" rear wheels, 14" front wheel. Good condition. Provenance: Ed & Marion Gerling Collection. Estimate: 75.00 - 100.00



510a Belfast Municipal Art Gallery And Museum Booklet

Belfast Municipal Art Gallery And Museum booklet. Summer 1924. Good condition. Wigan Free Public Library. Ed Berry Collection. Estimate: 25.00 - 50.00



511 Bicycle Frame & Forks Lot

Lot (3) bicycle frames including Schwinn Paramount (22 frame), Colnago frame (21 1/2" frame), unmarked frame (21 1/2" frame). (2) pair forks and seat and post. Good condition. Estimate: 75.00 - 100.00



512 Bicycle Siren

Vintage bicycle siren with star design. Good condition. Estimate: 75.00 - 100.00



31st Annual Bicycle Auction, October 21, 2023 10/21/2023**513 Two Bicycle Pocket Oilers**

Lot (2) early bicycle pocket oilers. Good condition. Estimate: 40.00 - 60.00

**514 Bicycle Bell**

Early bicycle bell with embossed big cat. Not working. Estimate: 75.00 - 100.00

**515 Columbia Bicycles Sign**

Vintage plastic Columbia Bicycles sign. 6 1/2" W., 4" Ht.. Good condition. Estimate: 40.00 - 60.00

**515a Bicycle Books**

Lot (2) bicycle books including: Cycling (Compliments of John Breuner...Columbia 1895), How I Learned To Ride The Bicycle (Frances E. Willard, 1895). Good condition. Ed Berry Collection. Estimate: 50.00 - 75.00

**516 Bicycle Tools**

Lot of vintage bicycle tools. Estimate: 40.00 - 60.00

**517 NOS Bicycle Chains**

Lot (2) boxed NOS bicycle chains. Diamond and Duckworth. Estimate: 50.00 - 75.00

**518 Bicycle Reflectors Lot**

Lot of vintage bicycle reflectors. Estimate: 40.00 - 60.00

**519 Bicycle Bell**

Pneumatic safety bicycle bell. Not working. Estimate: 75.00 - 100.00

**520 Bicycle Bell**

Early bicycle bell with embossed Fleur De Lis. Works. Estimate: 75.00 - 100.00

**520a Book & Misc. Lot**

Lot (7) items including Draisine, Velocipede booklets, Michaux booklet etc.. Good condition. Ed Berry Collection. One autographed. Estimate: 25.00 - 50.00

**521 Bicycle Bell**

Early bicycle bell with embossed Lion. Not working. Estimate: 75.00 - 100.00

**522 Bicycle Bell**

Early New Departure bicycle bell. Estimate: 75.00 - 100.00

**522a Book Lot**

Book lot including: Bicycle Yarns (Ex-Judge Henry Tate), bicycle (david v. herlihy), The Pedestrian Hobby-Horse (Roger Street), Around The World On A Bicycle (1984 Edition 88/1000), Der Freiherr von Drais. Good condition. Ed Berry Collection. Estimate: 50.00 - 75.00

**523 Vintage U.S. Rubber Employee Badges**

Lot (2) vintage U.S. Rubber employee badges. Fisk tire plant. Good condition. Estimate: 75.00 - 100.00

**524 Bicycle License Plates**

Three vintage vintage license plates. One "Side-Path". Estimate: 50.00 - 75.00



31st Annual Bicycle Auction, October 21, 2023 10/21/2023

LOT #

525 Bicycle Pins

Lot (2) Columbia bicycle pins. Estimate: 25.00 - 35.00



526 Bicycle Bells

Lot including (2) vintage bicycle bells and top. One works. Estimate: 75.00 - 100.00



527 Bicycle Head Badges

Lot (7) bicycle head badges. Includes Ruler, The World, Yale, Ludwig etc.. Fair-good condition. Estimate: 50.00 - 75.00



528 Bicycle Head Badges

Lot (9) bicycle head badges including Yale, Imperial, Flying Cloud, Elgin etc.. Fair-good condition. Estimate: 50.00 - 75.00



529 Bicycle Head Badges

Lot (14) bicycle head badges including Denver, Reading, Cutting, Carnival, The America etc.. Fair-good condition. Estimate: 75.00 - 100.00



530 Bicycle Tire & Rim Lot

Lot tire and rim lot including (7) pneumatic tires and (2) wooden rims. Estimate: 75.00 - 100.00



531 Pair NOS Wooden Rims

Pair of 28" NOS wooden rims. Estimate: 75.00 - 100.00



532 Pair of 20" Rims & Tires

Pair of 20" rims and tires. Estimate: 50.00 - 75.00



533 Pair Lobdell Rims

Pair of 28" Lobdell rims. Estimate: 75.00 - 100.00



534 Balloon Tires

Lot (3) pair of balloon tires. Estimate: 75.00 - 100.00



535 Child's High Wheel Bicycle

Early child's high wheel bicycle. Note noise maker on front. 24" front wheel. Good condition. Margaret Anne Baker Collection. Estimate: 100.00 - 150.00



536 1960's Rollfast Tandem Bicycle

1960's Rollfast tandem bicycle. Original condition. Margaret Anne Baker Collection. Estimate: 50.00 - 100.00



537 Crawford Pneumatic Safety Tandem Bicycle

Crawford pneumatic safety bicycle. Barn find condition. Margaret Anne Baker Collection. Estimate: 150.00 - 250.00



538 Evans Middleweight Bicycle

Evans middleweight bicycle. 19" frame. Good condition. Margaret Anne Baker Collection. Estimate: 50.00 - 75.00



31st Annual Bicycle Auction, October 21, 2023 10/21/2023**LOT #****539 Columbia Tricycle**

Early Columbia tricycle. 20" front wheel, 15" rear wheels. Fair condition. Margaret Anne Baker Collection. Estimate: 50.00 - 75.00

**540 Iver Johnson Pneumatic Safety Bicycle**

Iver Johnson pneumatic safety bicycle. 19" frame. Wooden rims. Original condition. Provenance: Ed & Marion Gerling Collection. Estimate: 75.00 - 100.00

**541 Tiller Tricycle**

Early tiller tricycle. 23 1/2" rear wheels, 14" front wheel. Good condition. Seat worn. Kiddie Joy lever tricycle, Mfg. by: Toledo Metal Wheel Co., Toledo, Ohio. Provenance: Ed & Marion Gerling Collection. Estimate: 75.00 - 100.00

**542 Tricycle**

C. 1900's steel tricycle. 20" front wheel, 14" rear wheels. Good condition. Provenance: Ed & Marion Gerling Collection. Estimate: 50.00 - 75.00

**543 Gendron Tricycle**

C. 1900's Gendron Wheel Co. tricycle. 20 1/2" front wheel, 14" rear wheels. Good condition. Missing one grip. Provenance: Ed & Marion Gerling Collection. Estimate: 50.00 - 75.00

**543a Book Lot**

Book lot including wheels within wheels, The Ingenious Mr. Pedersen, The American Bicycle, Broncho vs Bicycle pamphlet, La Petite Reine pamphlet, Le Cycle Et La Poste, Early Bicycles. Good condition. Ed Berry Collection. Estimate: 25.00 - 50.00

**544 Scooter**

Vintage scooter. Original paint. Good condition. Provenance: Ed & Marion Gerling Collection. Estimate: 50.00 - 75.00

**545 C. 1900's Tricycle**

C. 1900's tricycle. Good condition. 21" front wheel, 14" rear wheels. Provenance: Ed & Marion Gerling Collection. Estimate: 50.00 - 75.00

**546 Cleveland Pneumatic Safety Bicycle**

Cleveland pneumatic safety bicycle. Barn find condition. Provenance: Ed & Marion Gerling Collection. Estimate: 50.00 - 100.00

**547 Laclede Pneumatic Safety Bicycle**

Laclede pneumatic safety bicycle. Made in St. Louis MO.. Barn find condition. Provenance: Ed & Marion Gerling Collection. Estimate: 150.00 - 200.00

**548 Lucas New Coventry Oiler**

Lucas New Coventry oiler. Good condition. Estimate: 50.00 - 75.00

**549 Cycle Lock**

Hasp cycle lock with padlock and key. Good condition. Estimate: 50.00 - 75.00

**550 Bicycle Bell**

Bicycle bell with embossed American Indian. Good condition. Estimate: 25.00 - 50.00



31st Annual Bicycle Auction, October 21, 2023 10/21/2023

LOT #

551 Skirt Lifter

Plant & Green skirt lifter. Good condition.
Estimate: 25.00 - 50.00



552 London Bicycle Club Paperweight

London Bicycle Club paperweight medallion. 4" D.. Good condition. Estimate: 25.00 - 50.00



553 Snuff Box

19th c. snuff box. Lid has women riding a boneshaker. Hinge broken. 3" L.. Fair condition. Estimate: 50.00 - 75.00



554 Pierce Head Badge

Pierce head badge. Good condition.
Estimate: 25.00 - 50.00



555 Porcelain Patch Box

Early porcelain oval patch box with Draisienne rider on lid. 2" L.. Good condition. Estimate: 50.00 - 75.00



555a Thomas Stevens Bicycling World Print

1888 Thomas Stevens Bicycling World print. 11 1/2" x 9". Good condition. Ed Berry Collection. Estimate: 25.00 - 50.00



556 Bicycle Jewelry

Lot of assorted bicycle jewelry. Estimate: 50.00 - 75.00



557 Gormully & Jeffery Rambler Pneumatic Safety

Gormully & Jeffery Rambler pneumatic safety bicycle. Barn find condition. 22" frame. Estimate: 300.00 - 400.00



558 Col. Albert Pope Archive

Col. Albert Pope archive 11 1/2 x 8 1/2 unscribed rare photo "Wilmot & Lester double acrobatic wheelmen" inscribed "To Mrs. A.W. Pope with complements of W.D. Wilmot Leipzig Oct. 15, 1890". Provenance: Pope family. Imperfections on edges, fair condition. Also, 7" x 5" photo possibly Wilmot & Lester in very good condition. Estimate: 250.00 - 350.00



559 Col. Albert Pope Archive

Col. Albert Pope archive including (2) photos. 4 1/4" x 6 1/2" "The Weston Spring Frame Bicycle (H.T.S.) and an outfitted HTS 4" x 5 1/2" sulky, adult tandem tricycle photo studio "Stuart Hartford Conn.", 4" x 7" adult tandem tricycle 4" x 6" military HTS. Provenance: Pope Family. Good Condition. Estimate: 100.00 - 200.00



560 Col. Albert Pope Archive

Col. Albert Pope archive including: framed photo 6" x 4", sight 10 1/2" x 8 3/4" "Lizzie Baymer, Champion of Pacific Coast", 6 3/4" x 4 1/2" advertising card "his first lesson on a Columbia", 6" x 8" photo of a Wheelman studio posed on a HTS, verso "compliments Harry H. Hodgson New Orleans LA". Provenance: Pope family. Fair to good condition. Estimate: 100.00 - 200.00



560a Zimmerman Lot

Zimmerman lot including cigarette card, spoon, medal, ephemera. Case included. Good condition. Ed Berry Collection. Estimate: 50.00 - 75.00



31st Annual Bicycle Auction, October 21, 2023 10/21/2023**561 Col. Albert Pope Archive**

Col. Albert Pope archive including: photo 6 1/4" x 7 3/4", Columbia showroom, possibly factory? signed "Col. Albert A. Pope" good condition. Provenance: Pope family. Estimate: 200.00 - 300.00



Estimate: 500.00 - 1,000.00

565a Gold L.A.W. Chain

Gold L.A.W. chain with winged wheel. Good condition. Ed Berry Collection. Estimate: 50.00 - 75.00

**562 Col. Albert Pope Archive**

Col. Albert Pope archive including: 7 1/4" x 9 1/4" trade show photo, 4 1/2" x 7 1/2" photo "wheel room, Mass. Bicycle Club House", Hastings photo, Tremont Street (Boston). Provenance: Pope family. Estimate: 100.00 - 200.00

**566 Col. Albert Pope Archive**

Col. Albert Pope archive including: alphabetized ledger, many private letters 1893-1894, cover labeled "Col. Albert A. Pope Private 1893-1894, book industry vote clippings 1896, book historical records concerning Pope's work for "good roads" and other reforms, includes many signed documents. Fair-good condition. Provenance: Pope family. Estimate: 200.00 - 400.00

**563 Col. Albert Pope Archive**

Col. Albert Pope archive including: framed photo 4 1/2" x 7 1/2" sight 9 1/4" x 11 3/4", store of George S. Alwater & Co., Washington DC", 4 3/4" x 7 1/2" "Birmingham Arms Co. Store", 4 1/2" x 7 1/2" "B'ham Arms Co. Cycle W'ks E.A. Loosley Mgr.", 6 1/2" x 8 3/4" "Huber & Metzger Bicycles". Good condition. Provenance: Pope family. Estimate: 100.00 - 200.00

**567 Early Child's High Wheel Bicycle**

Early child's high wheel bicycle. Restored. 28 1/2" wheel. Margaret Anne Baker Collection. Estimate: 150.00 - 250.00

**564 Col. Albert Pope Archive**

Col. Albert Pope Archive including: photo album with some identified photos. "WH Miller studio posed on highwheel (Columbus Ohio), "John Keen Pro. Champion of England", D.S. Drake...Columbia Agent, Huntingdon PA". Album in poor condition, photos in good condition. Provenance: Pope family. Estimate: 100.00 - 200.00

**568 Child's Iver Johnson Bicycle**

Child's hard tire Iver Johnson bicycle. Saddle needs recovering. Good condition. Margaret Anne Baker Collection. Estimate: 75.00 - 100.00

**569 Tiller Tricycle**

Early tiller tricycle. 23" rear wheels, 14" front wheel. Good condition. Margaret Anne Baker Collection. Estimate: 100.00 - 150.00

**565 Col. Albert Pope Archive**

Col. Albert Pope archive including: lot of personal scrap books containing news clippings cut outs pertaining to the Columbia Bicycle Co. #1 1889-1891, #3 1892-1893, #4 1893-1894, #5 1894, #6 1894-1895, #7 1895-1896, #8 1899, #9 1899, #12 1892-1901. Provenance Pope family.



31st Annual Bicycle Auction, October 21, 2023 10/21/2023**LOT #****570 Child's High Wheel Bicycle**

Early child's high wheel bicycle. Saddle as found. 25" front wheel. Margaret Anne Baker Collection. Estimate: 75.00 - 100.00

**575 Bicycle Head Badge Lot**

Bicycle head badge lot including: (64) balloon and later period bicycle head badges. James Hetzer Collection New Hampshire. Estimate: 75.00 - 100.00

**570a Boston Bicycle Club Lot**

Lot including Boston Bicycle Club "WHEEL AROUND '93" pin, wheel pin, 1893 invitation. Good condition. Ed Berry Collection. Estimate: 50.00 - 75.00

**575a Misc. Lot**

Misc. lot including bandanna, letter from race attendee (Great American Casino race). Good condition. Ed Berry Collection. Estimate: 25.00 - 50.00

**571 Misc. Tubeless Tire Lot**

Misc. tubeless tire lot including: Pair 18" United States "overland", Pair 16" United States "overland", (4) different 12 x 2.00, (2) 14 x 2.00, 12.75 x 2.50, 3 United States "No. 76 Giant chain tread 20"". Good to fair condition. James Hetzer Collection New Hampshire. Estimate: 25.00 - 50.00

**576 Bicycle Head Badge Lot**

Bicycle head badge lot including: (64) balloon and later period bicycle head badges. Good - fair condition. James Hetzer Collection New Hampshire. Estimate: 75.00 - 100.00

**572 Misc. Tubeless Tire Lot**

Misc. tubeless tire lot including: (7) 24" United States No. 76 "Giant chain tread", Fisk Victor, Gillette Ambassador. James Hetzer Collection New Hampshire. Estimate: 25.00 - 50.00

**577 Book Lot**

Book lot including: "Around the World on a Bicycle", Thomas Stevens, from San Francisco to Teheran. Vol. 1 and 2. Fair condition. James Hetzer Collection New Hampshire. Estimate: 25.00 - 50.00

**573 Bicycle Head Badge Lot**

Bicycle head badge lot including: (36) early period bicycles head badges (lots of duplicates). Good - fair condition. James Hetzer Collection New Hampshire. Estimate: 50.00 - 75.00

**578 Bicycle Tool Lot**

Bicycle tool lot including: "Victor" adjustable wrench with leather holster, "Iver Johnson" adjustable wrench, "Iver Johnson" screw driver, "The Elgin" vice grip wrench. Good condition. James Hetzer Collection New Hampshire. Estimate: 50.00 - 75.00

**574 High Wheel Head Cover Lot**

High wheel head cover lot including: (2) blanks, (1) unknown, (1) Columbia light roadster, (1) Columbia tube badge. Good - fair condition. James Hetzer Collection New Hampshire. Estimate: 50.00 - 100.00

**579 Rare Hobby Horse**

Hobby horse decorated 2 5/8" porcelain. Very good condition. James Hetzer Collection New Hampshire. Estimate: 75.00 - 125.00



31st Annual Bicycle Auction, October 21, 2023 10/21/2023

LOT #

580 New England Club Pin Lot

New England club pin lot includes case and (13) pin back buttons (includes case). Good to fair condition. James Hetzer Collection New Hampshire. Estimate: 75.00 - 125.00



581 Misc. Lot

Misc. lot of bicycle club pin, ribbon, token and rare medals (4) cases. Good condition. James Hetzer Collection New Hampshire. Estimate: 100.00 - 200.00



582 Metal Lot

Metal lot collection awarded to Frank A. Kirby of Bogota NJ, C. 1897. Good condition. James Hetzer Collection New Hampshire. Estimate: 100.00 - 150.00



583 Bicycle Name Badge Lot

Bicycle name badge lot including (25) early period badges. James Hetzer Collection New Hampshire. Estimate: 100.00 - 200.00



584 Bicycle Name Badge Lot

Bicycle name badge lot including: (25) early period badges. James Hetzer Collection New Hampshire. Estimate: 100.00 - 200.00



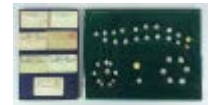
585 Bicycle Name Badge Lot

Bicycle name badge lot including: (25) early period badges. James Hetzer Collection New Hampshire. Estimate: 100.00 - 200.00



586 Wheelmen Collection

Wheelmen collection including: showcase with uniform buttons and showcase with LAW ID cards. Good to Fair condition. James Hetzer Collection New Hampshire. Estimate: 100.00 - 150.00



587 Pinback Lot

Pinback lot including (30) examples (case included). Good condition. James Hetzer Collection New Hampshire. Estimate: 50.00 - 75.00



588 Pinback Collection

Pinback collection including (30) examples (case included). Good condition. James Hetzer Collection New Hampshire. Estimate: 50.00 - 75.00



589 Pin Collection

Pin collection including (28) pinback and lapel pins. Good condition. James Hetzer Collection New Hampshire. Estimate: 50.00 - 75.00



589a Book Lot

Book lot including Sixty Poets ON THE WHEEL (J.G. Dalton, 1885), and Songs Of The Wheel (Walter Phillips). Good condition. Ed Berry Collection. Estimate: 50.00 - 75.00



590 Early Bicycle Photograph Collection

Early bicycle photograph collection including: (13) tin types (case included). Good condition. James Hetzer Collection New Hampshire. Estimate: 100.00 - 200.00



31st Annual Bicycle Auction, October 21, 2023 10/21/2023**LOT #****590a Book Lot**

Book lot including History of the Pickwick Bicycle Club (Compiled by "Hon. Mr. Crushton" (1905), Wheel Tracks in Foreign Lands (1890). Fair-good condition. Ed Berry Collection. Estimate: 50.00 - 75.00

**596 Bicycle Ephemera Collection**

Bicycle ephemera collection including: trade cards, booklets, advertising, dealer info, stamp books, tobacco cards (2 albums). Good condition. James Hetzer Collection New Hampshire. Estimate: 100.00 - 200.00

**591 Early Bicycle Collection**

Early bicycle collection including: Imperial straight razor with tandem engraving, souvenir spoons including NE Bicycle Shoe Boston 1897 and LAW Washington. Good condition. James Hetzer Collection New Hampshire. Estimate: 50.00 - 75.00

**597 Early LAW Lot**

Early LAW ephemera lot including: mostly New England: club photos, events, hand bills, advertising etc. Good condition. James Hetzer Collection New Hampshire. Estimate: 75.00 - 125.00

**592 Bicycle Postcard Lot**

Bicycle postcard lot including (136) examples. Good condition. James Hetzer Collection New Hampshire. Estimate: 100.00 - 150.00

**598 Bicycle Catalog Collection**

Bicycle catalog collection including: 1879 -1882 Columbia, Victor, Lovell Arms, G & J, WW Stall, Spalding, Luburg. Good condition. James Hetzer Collection New Hampshire. Estimate: 200.00 - 300.00

**593 Bicycle Postcard Lot**

Bicycle postcard lot including (120) examples, military, real photo, racers, ladies. Good condition. James Hetzer Collection New Hampshire. Estimate: 150.00 - 250.00

**599 Bicycle Catalog Collection**

Bicycle catalog collection including: 1893 -1894 Hartford, Remington, St. Nicholas, Union, Victor, Warwick, Eclipse, Columbia, Kenwood, Liberty, Stearns, Syracuse. Good - fair condition. James Hetzer Collection New Hampshire. Estimate: 150.00 - 250.00

**594 Bicycle Postcard Lot**

Bicycle postcard lot including: (120) examples, vaudeville, trick performers, greetings, holiday. Good condition. James Hetzer Collection New Hampshire. Estimate: 125.00 - 225.00

**600 Bicycle Catalog Collection**

Bicycle catalog collection including: 1895 Columbia, Boston, Crescent, Eclipse, Keating, Spalding, Stearns, Victor. Good condition. James Hetzer Collection New Hampshire. Estimate: 150.00 - 250.00

**595 Indian Head Badge Lot**

Indian head badge lot including: (5) different Indian bicycle head badges. Good to fair condition. James Hetzer Collection New Hampshire. Estimate: 100.00 - 150.00

**601 Head Badge & Misc. Lot**

Lot including head badges (Tuxhorns Utryrne, Rugby etc.), Albert Pope paperweight, (5) folding cyclist's cups, Chiclylo Bicycle Tires whistle, Rambler



31st Annual Bicycle Auction, October 21, 2023 10/21/2023

medallion, Wolff American paperweight.
Fair-good condition. Ed & Marion Gerling
Collection. Estimate: 75.00 - 100.00

602 Tip Tray Lot

Lot (3) tip trays including Columbia, (2)
with bicycle motifs, Miami paperweight,
Albert Pope paperweight. Good condition.
Estimate: 75.00 - 100.00



603 Bicycle Collectibles Lot

Lot including playing cards, tin bottle,
scarce Wolff-American tin with original
folding cup, license plates, poker chips,
Albert Pope paperweight, Bicycle Oil
bottle, matches, First Day covers, 1905
Pope calendar, Kriss Kringle On A Wheel
booklet. Good condition. Ed & Marion
Gerling Collection. Estimate: 50.00 - 75.00



604 Bicycle Lamp & Brackets Lot

Lot including as found bicycle lamps,
brackets, wicks. Fair condition. Ed &
Marion Gerling Collection. Estimate: 50.00 -
75.00



605 Bicycle Lamp Lot

Lot including Solar lamp in box (7" Ht.),
Solar lamp (7 1/2" Ht.), Solar lamp (as
found, 7" Ht.). Ed & Marion Gerling
Collection. Estimate: 75.00 - 100.00



606 Bicycle Lamp Lot

Lot (3) Solar bicycle lamps. 7" Ht..
Fair-good condition. Ed & Marion Gerling
Collection. Estimate: 75.00 - 100.00



607 Bicycle Lamp Lot

Lot (2) bicycle lamps including Solar (7"
Ht.), and Herm Rieman Phenomen (7" Ht.).
Good condition. Ed & Marion Gerling
Collection. Estimate: 75.00 - 100.00



607a Book Lot

Book lot including
Illustrierte-Fahrrad-Geschichte (Jutta
Franke), Cycling...The Art of Collectibles
(Patrick Fillion), Genesis Of The Bicycle In
The United States, 1865-1893: A
Bibliographic Tool For Researchers (Larry
Samuel Bonura). Good condition. Ed Berry
Collection. Estimate: 50.00 - 75.00



608 Bicycle Lamp Lot

Lot (2) bicycle lamps including Twentieth
Century (7 1/2" Ht.), Twentieth Century (7
1/2" Ht.). Good condition. Ed & Marion
Gerling Collection. Estimate: 75.00 - 100.00



608a Book Lot

Lot (2) Roland Geist books including:
Bicycling As A Hobby (autographed and
inscribed), Bicycle People (autographed
and inscribed to Ed Berry). Ed Berry
Collection. Good condition Estimate: 50.00 -
75.00



609 Bicycle Lamp Lot

Lot (3) bicycle lamps including
"BRECKINRIDGE GAS LAMP" (7 1/2" Ht.),
The Neverout (6 1/2" Ht.), C.M. Hall Lamp
Co. (6" Ht.). Fair-good condition. Ed &
Marion Gerling Collection. Estimate: 75.00 -
100.00



610 Bicycle Lamp Lot

Lot (3) bicycle lamps including Ever-Ready
(5" Ht.), Duplex (6" Ht.), Duplex (7" Ht.).
Fair to good condition. Ed & Marion
Gerling Collection. Estimate: 75.00 - 100.00



31st Annual Bicycle Auction, October 21, 2023 10/21/2023**611 Bicycle Lamp Lot**

Lot (3) bicycle lamps including Miller (8" Ht.), The Everlit (5 1/2" Ht.), The Sanford & Pollow Co. (5" Ht.). Fair-good condition. Ed & Marion Gerling Collection. Estimate: 75.00 - 100.00

**612 Bicycle Lamp Lot**

Lot (3) bicycle lamps including "X-RAYS" (Adams & Westlake, 6" Ht.), The Neverout (6 1/2" Ht.), Miller (5 1/2" Ht., glass loose). Fair-good condition. Ed & Marion Gerling Collection. Estimate: 75.00 - 100.00

**613 Bicycle Lamp Lot**

Lot (4) bicycle lamps including Columbia Model C (5 1/2" Ht.), Old Sol (cracked lens, 6" Ht.), Lucas (Birmingham, 6" Ht.), Lucas (6" Ht.). Fair-good condition. Ed & Marion Gerling Collection. Estimate: 75.00 - 100.00

**614 Bicycle Lamp Lot**

(3) bicycle lamps including Majestic (7 3/4" Ht.), Search Light (7 1/2" Ht.), Old Sol (6 1/2" Ht.). Good condition. Ed & Marion Gerling Collection. Estimate: 75.00 - 100.00

**615 Bicycle Lamp Lot**

Lot (3) bicycle lamps including Helios Automatic (Phil., 7" Ht.), C.M. Hall Lamp Co. (6" Ht.), Columbia Model C (6" Ht.). Good condition. Ed & Marion Gerling Collection. Estimate: 75.00 - 100.00

**616 Bicycle Lamp Lot**

Lot (2) bicycle lamps including Nirona (6" Ht.), Oberman (6" Ht.). Good condition. Ed & Marion Gerling Collection. Estimate: 75.00 - 100.00

**617 Bicycle Lamp Lot**

Lot (4) bicycle lamps including Improved Banner (6" Ht.), Dietz (6" Ht.), Dazzler (6" Ht.), The Flash Light (5" Ht.). Fair-good condition. Ed & Marion Gerling Collection. Estimate: 75.00 - 100.00

**618 Bicycle Lamp Lot**

Lot (3) bicycle lamps including Twentieth Century (7" Ht.), Bauer (6 1/2" Ht.), Impex. Good condition. Ed & Marion Gerling Collection. Estimate: 75.00 - 100.00

**619 Bicycle Lamp Lot**

Lot (2) bicycle lamps including The Matthews & Willard Co. (Waterbury Ct., 6" Ht.), Bristol Brass & Clock Co. (6" Ht.). Fair-good condition. Ed & Marion Gerling Collection. Estimate: 75.00 - 100.00

**620 Bicycle Lamp Lot**

Lot (2) bicycle lamps including Twentieth Century (6" Ht.), Powell & Hanmer in box (4" Ht.). Fair-good condition. Ed & Marion Gerling Collection. Estimate: 75.00 - 100.00

**621 Bicycle Lamp Lot**

Lot (2) bicycle lamps including Hassia (4" Ht.), and C.E. Sontum & Co. (9" Ht.). Good condition. Ed & Marion Gerling Collection. Estimate: 75.00 - 100.00

**621a Book Lot**

Book lot including Pour Une Bibliographie Du Cyclisme (Keizo Kobayashi), Histoire du Velocipede de Drais a Michaux 1817-1870 (Keizo Kobayashi). Good condition. Ed Berry Collection. Estimate: 50.00 - 75.00



31st Annual Bicycle Auction, October 21, 2023 10/21/2023**LOT #****622 Bicycle Lamp Lot**

Lot (3) bicycle lamps including Solar (7 1/2" Ht.), Hine-Watt (5 1/2" Ht.), Electro (5 1/2" Ht.). Good condition. Ed & Marion Gerling Collection. Estimate: 75.00 - 100.00

**628 Bicycle Lamp Lot**

Lot (3) bicycle lamps including The Acetylite (Chicago, 7 1/2" Ht.), Gloria (4 3/4" Ht.), Lucas Silver King of The Road (5" Ht.). Good condition. Ed & Marion Gerling Collection. Estimate: 75.00 - 100.00

**623 Bicycle Lamp**

Union Lamp Company William Globe bicycle lamp. 6" Ht.. Good condition. Ed & Marion Gerling Collection. Estimate: 75.00 - 100.00

**629 Bicycle Lamps**

Lot (3) bicycle candle lamps. Tallest 10 1/2" Ht.. Ed & Marion Gerling Collection. Estimate: 75.00 - 100.00

**624 Bicycle Lamp Lot**

Lot (3) bicycle lamps including The Everlit (6" Ht.), unmarked (6 1/2" Ht.), Twentieth Century (7 1/2" Ht.). Good condition. Ed & Marion Gerling Collection. Estimate: 75.00 - 100.00

**630 Bicycle Lamp Lot**

Lot (5) bicycle lamps. Includes Powell & Hanmer Demon, Made in India, Star (G & J), Cyclone, Joseph Lucas. Tallest 5 1/2" Ht.. Fair-good condition. Ed & Marion Gerling Collection. Estimate: 75.00 - 100.00

**625 Bicycle Lamp Lot**

Lot (3) bicycle lamps including Solar (6 1/2" Ht.), Solar (lens cracked, 6 1/2" Ht.), Electro (5 1/2" Ht.). Good condition minus noted crack in lens. Ed & Marion Gerling Collection. Estimate: 75.00 - 100.00

**631 Bicycle Lamp**

Bicycle lamp "DIRECTOR". 6" Ht.. Good condition. Ed & Marion Gerling Collection. Estimate: 75.00 - 100.00

**626 Bicycle Lamp**

Bicycle lamp Wizard Gas Lamp (Chicago, 8 1/2" Ht.). Good condition. Ed & Marion Gerling Collection. Estimate: 75.00 - 100.00

**632 Bicycle Lamp Lot**

Lot of assorted bicycle lamps including boxed "MAKE-A-LITE", Delta battery light etc.. Fair-good condition. Ed & Marion Gerling Collection. Estimate: 50.00 - 100.00

**627 Bicycle Lamp**

Bicycle lamp Lohmann's Perfecta. 7 1/4" Ht.. Good condition. Ed & Marion Gerling Collection. Estimate: 75.00 - 100.00

**633 Bicycle Framed Ephemera Lot**

Lot (11) frames with bicycle ephemera. Includes trade cards, die cuts, Cigarette cards etc.. Frames 21 1/2" x 17" overall. Ed & Marion Gerling Collection. Estimate: 200.00 - 300.00



31st Annual Bicycle Auction, October 21, 2023 10/21/2023**LOT #**

634 Bicycle Pinbacks

Lot (54) bicycle pinbacks in shadowbox.
Ed & Marion Gerling Collection. Estimate:
50.00 - 75.00

**635 Bicycle Pinbacks**

Lot (54) bicycle pinbacks in shadowbox.
Ed & Marion Gerling Collection. Estimate:
50.00 - 75.00

**636 Bicycle Pinbacks**

Lot (54) bicycle pinbacks in shadowbox.
Ed & Marion Gerling Collection. Estimate:
50.00 - 75.00

**637 Bicycle Pinbacks**

Lot (54) bicycle pinbacks in shadowbox.
Ed & Marion Gerling Collection. Estimate:
50.00 - 75.00

**638 Bicycle Pinbacks**

Lot (54) bicycle pinbacks in shadowbox.
Ed & Marion Gerling Collection. Estimate:
50.00 - 75.00

**639 Bicycle Pinbacks**

Lot (54) bicycle pinbacks in shadowbox.
Ed & Marion Gerling Collection. Estimate:
50.00 - 75.00

**640 Bicycle Pinbacks**

Lot (54) bicycle pinbacks in shadowbox.
Ed & Marion Gerling Collection. Estimate:
50.00 - 75.00

**641 Bicycle Pinbacks**

Lot (54) bicycle pinbacks in shadowbox.
Ed & Marion Gerling Collection. Estimate:
50.00 - 75.00

**642 Bicycle Pinbacks**

Lot (54) bicycle pinbacks in shadowbox.
Ed & Marion Gerling Collection. Estimate:
50.00 - 75.00

**643 Bicycle Pinbacks**

Lot (54) bicycle pinbacks in shadowbox.
Ed & Marion Gerling Collection. Estimate:
50.00 - 75.00

**644 Bicycle Pinbacks**

Lot (38) bicycle pinbacks. Ed & Marion
Gerling Collection. Estimate: 50.00 - 75.00

**645 Bicycle Pinbacks**

Lot over (50) bicycle pinbacks. Ed &
Marion Gerling Collection. Estimate: 50.00 -
75.00

**646 Bicycle Collectibles Lot**

Lot including bicycle motif spoons,
matchsafe, nippers, token, medal etc..
Estimate: 50.00 - 75.00

**647 Bicycle Collectibles Lot**

Lot including bicycle medals, pinbacks,
medallion. Includes L.A.W.. Ed & Marion
Gerling Collection. Estimate: 50.00 - 75.00



31st Annual Bicycle Auction, October 21, 2023 10/21/2023**LOT #****648 Bicycle Pins**

Lot of (38) bicycle pins. Ed & Marion Gerling Collection. Estimate: 50.00 - 75.00

**649 Bicycle Medals**

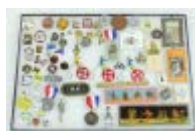
Lot (8) bicycle medals. 1920's Century Runs, (2) Miss Hulling's Bicycle Derby. Ed & Marion Gerling Collection. Estimate: 50.00 - 75.00

**650 Antique Bicycle Slides**

Showcase of early bicycle slides. Case included. Ed & Marion Gerling Collection. Estimate: 50.00 - 75.00

**651 Bicycle Collectibles Lot**

Showcase lot including pins, slides, wrench, balance toys. Case included. Ed & Marion Gerling Collection. Estimate: 50.00 - 75.00

**652 Photograph Album**

Early bicycle motif photograph album with (11) photographs. Mostly children with tricycles. Fair-good condition. Ed & Marion Gerling Collection. Estimate: 50.00 - 75.00

**653 Photograph Album**

Early bicycle motif photograph album with over (30) photographs. Includes studio and various poses with high wheels (including Stars), includes tintypes and cabinet cards. Fair-good condition. Ed & Marion Gerling Collection. Estimate: 50.00 - 75.00

**654 Photograph Album**

Early bicycle motif photograph album with (31) images of children with tricycles. Ed & Marion Gerling Collection. Estimate: 50.00 - 75.00

**655 Photograph Album**

Early photograph album with (42) images. Mostly studio and outdoor poses with safety bicycles. Includes cabinet cards, tintypes etc.. Ed & Marion Gerling Collection. Estimate: 50.00 - 75.00

**656 Photograph Album**

Early photograph album with (32) images. Includes studio poses with safety bicycles, tricycles etc.. Ed & Marion Gerling Collection. Estimate: 50.00 - 75.00

**657 Photograph Album**

Early photograph album with (32) images. Mostly hard tire safety bicycles, includes cabinet cards, tintypes etc.. Ed & Marion Gerling Collection. Estimate: 50.00 - 75.00

**658 Postcard Lot**

Lot (2) binders filled with bicycle related postcards. Includes photograph style, Holiday, humorous etc.. Ed & Marion Gerling Collection. Estimate: 150.00 - 200.00

**659 Bicycle Collectibles Lot**

Lot including bicycle medals, pinbacks, all European. Ed & Marion Gerling Collection. Estimate: 50.00 - 75.00



31st Annual Bicycle Auction, October 21, 2023 10/21/2023**LOT #****660 Bicycle Collectibles Lot**

Lot including bicycle medallions, buttons, pins etc.. Ed & Marion Gerling Collection. Estimate: 50.00 - 75.00

**661 Bicycle Collectibles Lot**

Lot including bicycle medals. Includes Century Runs etc.. Ed & Marion Gerling Collection. Estimate: 50.00 - 75.00

**662 Bicycle Ribbons**

Lot (2) showcases of bicycle ribbons. Includes L.A.W.. Cases included. Ed & Marion Gerling Collection. Estimate: 50.00 - 75.00

**663 Bicycle Pinbacks**

Showcase of over (60) bicycle pinbacks, medallions. Case included. Ed & Marion Gerling Collection. Estimate: 50.00 - 75.00

**664 Bicycle Catalogs**

Lot (4) bicycle catalogs including 1896 Barnes The White Flyer, 1894 Acme Cycle Company, 1914 Arrow Cycle Company, 1903 American Cycle Mfg. Co.. Fair-good condition. Ed & Marion Gerling Collection. Estimate: 50.00 - 75.00

**665 Bicycle Catalogs**

Lot (5) bicycle catalogs including 1894 Cleveland Bicycles, 1892 Chicago Bicycle Co., The Bridgeport Gun Implement Co., 1888 Geo. Bidwell Bicycles and Tricycles, 1891 Geo. Bidwell Safety Bicycles. Fair-good condition. Ed & Marion Gerling Collection. Estimate: 50.00 - 75.00

**666 Columbia Bicycle Catalogs**

Lot of Columbia bicycle catalogs and ephemera including 1892, 1912, 1891, 1893, 1904, various ephemera. Fair-good condition. Ed & Marion Gerling Collection. Estimate: 50.00 - 75.00

**667 Bicycle Catalog and Ephemera Lot**

Bicycle catalogs including The Czar, Coventry, 1900 Bicycle Sundries, Stover, 1900 Crescent, various ephemera. Fair-good condition. Ed & Marion Gerling Collection. Estimate: 50.00 - 75.00

**668 1889 Eagle Bicycle Catalog**

1889 Eagle bicycle catalog. Fair condition. Ed & Marion Gerling Collection. Estimate: 50.00 - 75.00

**669 Bicycle Catalog and Ephemera Lot**

Lot of bicycle catalogs including 1896 Rambler, 1897 The Tire Manual, Elliott booklet, Edwards and Crist, Eclipse, 1901 Bicycle Sundries. Fair-good condition. Ed & Marion Gerling Collection. Estimate: 50.00 - 75.00

**670 Bicycle Catalog and Ephemera Lot**

Bicycle catalog lot including National Bicycles, Morgan & Wright, 1906 The Miami Cycle Co., 1898 Mead Cycle Company, Tires & Sundries, 1893 Indiana Bicycle Co., 1893 Hill Cycle Manufacturing Co., various ephemera. Fair-good condition. Ed & Marion Gerling Collection. Estimate: 50.00 - 75.00

**671 Bicycle Catalog and Ephemera Lot**

Lot of bicycle catalogs including Shapleigh Special Bicycles, U.S. Army tire pamphlet, Rudge, Premier Cycle Works, Pratt & Whitney, New Departure Bells and various ephemera. Fair-good condition. Ed &



31st Annual Bicycle Auction, October 21, 2023 10/21/2023

Marion Gerling Collection. Estimate: 50.00 - 75.00

672 Bicycle Rims Lot

Lot of bicycle tires, wooden rims. Fair-good condition. Ed & Marion Gerling Collection. Estimate: 150.00 - 200.00



673 Victor Bicycle Catalogs

Lot (2) Victor Bicycle catalogs. 1890, 1891, various ephemera. Fair-good condition. Ed & Marion Gerling Collection. Estimate: 50.00 - 75.00



674 Bicycle Catalogs

Lot (4) bicycle catalogs including 1893 Taylor Cycle Company, Perfection Cycles (Warwick), 1898 Crescent Bicycles, 1893 Western Wheel Works (Pope). Fair-good condition. Ed & Marion Gerling Collection. Estimate: 50.00 - 75.00



675 Bicycle Catalogs

Lot of bicycle catalogs and ephemera including 1914 Motor Car Supply Co., 1893 Sylph, 1893 Sterling and Union (Stokes), 1893 Union Cycles (Stokes), 1891 S.H.C. Western. Fair-good condition. Ed & Marion Gerling Collection. Estimate: 50.00 - 75.00



676 Mettlach Stein

German Mettlach stein "All Heil". Features riders on safety and high wheel bicycles. Good condition. 9" Ht.. Ed & Marion Gerling Collection. Estimate: 50.00 - 75.00



677 Bicycle Stein

German bicycle stein. Features man on high wheel bicycle. 7 1/2" Ht.. Good condition. Ed & Marion Gerling Collection. Estimate: 50.00 - 75.00



678 Bicycle Steins

Lot (2) German bicycle steins. Both feature riders on safety bicycles. Tallest 9 1/2" Ht.. Good condition. Ed & Marion Gerling Collection. Estimate: 75.00 - 100.00



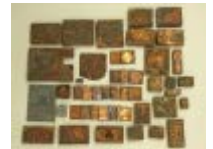
679 Bicycle Collectibles Lot

Large lot of bicycle collectibles and misc. Ed & Marion Gerling Collection. Estimate: 50.00 - 75.00



680 Bicycle Print Blocks

Collection of various bicycle printing blocks. Ed & Marion Gerling Collection. Estimate: 50.00 - 75.00



681 Bicycle Pitcher Lot

Lot including Bicycle Girl pitcher, Mfg. by Dalzell Gilmore & Leighton, Findlay Ohio, 1888-1890 (10 1/2" Ht.), (2) etched tumblers, milk glass plate with photograph of children on tricycle (8 1/2" D.), New Departure silverplate spoon (8 1/2" L.). Good condition. Estimate: 50.00 - 75.00



682 Bicycle Photographs & Misc. Lot

Lot including tintype, studio pose with high wheel (5" x 3 1/2"), frame with safety riders (overall 10 1/2" x 7"), framed postcards (overall 8" x 12"), outdoor photograph, men with safety bicycles (overall 11 1/2" x 13 1/2"), photograph "Fifth Annual Meet, Illinois Division, League of American Wheelmen, SPRINGFIELD July 4, 1888" (overall 12" x 14"), various ephemera. Good condition. Ed & Marion Gerling Collection. Estimate:



31st Annual Bicycle Auction, October 21, 2023 10/21/2023

75.00 - 100.00

683 Collection of Bicycle Bells & Whistles

Collection of early bicycle bells, whistles, siren. Fair-good condition. Ed & Marion Gerling Collection. Estimate: 150.00 - 200.00



684 Bicycle Cyclometers

Lot including Veeder-Root cyclometer in box, New York Standard Watch Co. cyclometer, American Clock Co. cyclometer, parts, various cyclometers. Fair-good condition. Ed & Marion Gerling Collection. Estimate: 75.00 - 100.00



685 Bicycle Lot

Lot including oilers, brass plugs, pedals, clips, tire repair kits. Ed & Marion Gerling Collection. Estimate: 50.00 - 100.00



685a Bicycle Ephemera Lot

Lot of bicycle ephemera with high wheels and velocipedes. Includes Harper's Weekly prints. Fair-good condition. Ed Berry Collection. Estimate: 50.00 - 75.00



686 Bicycle Spokes

Large collection of early bicycle spokes. Some in original boxes. Ed & Marion Gerling Collection. Estimate: 50.00 - 75.00



687 Bicycle Wrenches

Large collection of early bicycle wrenches. Ed & Marion Gerling Collection. Estimate: 50.00 - 75.00



688 Bicycle Grips

Assortment of early bicycle grips. Ed & Marion Gerling Collection. Estimate: 50.00 - 75.00



689 Bicycle Chains

Collection of early bicycle chains, includes (2) empty chain tins, boxed chain. Ed & Marion Gerling Collection. Estimate: 50.00 - 75.00



690 Saddles & Handlebars Lot

Lot of assorted early bicycle saddles, handlebars, parts, tool bag, noise makers etc.. Ed & Marion Gerling Collection. Estimate: 50.00 - 75.00



691 Early Tire Tool

Early tire tool. Ed & Marion Gerling Collection. Estimate: 50.00 - 75.00



692 Bicycle Catalog Collection

Bicycle catalog collection including: 1896, Columbia, Duntless, Dayton, The Davidson, Fowler, Crescent, Hummer, Ideal, Lovell, Majestic, Niagra, Relay, S & F, Union, Waverley. Good Condition. James Hetzer Collection New Hampshire. Estimate: 150.00 - 250.00



693 Bicycle Catalog Collection

Bicycle catalog collection including: 1897 Cleveland, Cycloid, Dayton, Eagle, Hartford, Hudson, Keating, Tourist, Vanguard. Good Condition. James Hetzer Collection New Hampshire. Estimate: 150.00 - 250.00



31st Annual Bicycle Auction, October 21, 2023 10/21/2023**LOT #****694 Bicycle Catalog Collection**

Bicycle catalog collection including: 1898 Cleveland, Columbia, Crescent, Eclipse, Iver Johnson, Liberty, Lovell, Sterling, Reading Standard. Good to fair condition. James Hetzer Collection New Hampshire. Estimate: 100.00 - 175.00

**695 Bicycle Catalog Collection**

Bicycle catalog collection including: 1899 Adlake, Crescent, Dayton, Rambler, Stormer & Pennant, Waltham. Good to fair condition. James Hetzer Collection New Hampshire. Estimate: 100.00 - 150.00

**696 Bicycle Catalog Collection**

Bicycle catalog collection including: 1900-1904 Monarch, Pierce, Remington, Tribune, Packer, Sears, Roebuck, Stormer & Pennant, Adlake, Imperial, Columbia. Good to fair condition. James Hetzer Collection New Hampshire. Estimate: 100.00 - 150.00

**697 Bicycle Catalog Collection**

Bicycle catalog collection including: 1906 - 1921 Tribune, Iver Johnson, Lovell, Columbia, Carnival, Pope, Cleveland. Good to fair condition. James Hetzer Collection New Hampshire. Estimate: 100.00 - 150.00

**698 Bicycle Catalog Collection**

Bicycle catalog collection including: 1921 - 1945 Beckley-Ralston, Columbia, CCM, Velo-King, Island Supply, Miami, Schwinn. Good condition. James Hetzer Collection New Hampshire. Estimate: 100.00 - 150.00

**699 Mead Cycles Catalogs**

Mead Cycles catalogs 1907-1931 (7) examples. Good condition. James Hetzer Collection New Hampshire. Estimate: 75.00 - 125.00

**700 Bicycle Company Letter Head Lot**

Bicycle company letter head lot 1885-1995 (40) examples. Good to fair condition. James Hetzer Collection New Hampshire. Estimate: 50.00 - 75.00

**701 Bicycle Ad Collection**

Bicycle ad collection including (2) volumes. Good to fair condition. James Hetzer Collection New Hampshire. Estimate: 50.00 - 100.00

**702 Bicycle Catalog Lot**

Bicycle catalog lot including: (2) volumes of bicycle sundries 1892-1920's (34) examples. Good to fair condition. James Hetzer Collection New Hampshire. Estimate: 50.00 - 75.00

**703 Print Lot**

Print lot including: Framed contemporary re-print photo "L.A.W. Gathering July 1889, public square, Hagerstown, Maryland 22 1/4" x 27 1/4" (stage 5 tour DuPont 1992 Hagerstown Maryland, also including (63) additional copies. Good condition. Collection of Margaret Ann Baker. Estimate: 50.00 - 100.00

**704 Framed Poster**

Framed poster "The Wheelmen 2008 National Meet, Dover, Delaware. Frame 20" x 31 1/2". Good condition. Collection of Margaret Ann Baker. Estimate: 50.00 - 75.00



31st Annual Bicycle Auction, October 21, 2023 10/21/2023

LOT #

705 Framed Photo

Framed photo "10th Annual Race July 2-3-4 1889 Hagerstown, MD". Frame 13 3/4" x 25 5/8". Good condition. Frame 20" x 31 1/2". Collection of Margaret Ann Baker. Estimate: 100.00 - 150.00



706 Lot of Pocket Watches

Lot (2) bicycle motif pocket watches "Regulateur" qualities - superieure and hunter case "Arnex" swiss 17 jewel. Good condition, both seem to work (no guarantee). Good condition. Collection of Margaret Ann Baker. Estimate: 100.00 - 200.00



707 Medal Collection

Metal collection (4) LAW Century medals, Philadelphia, PA 1896-1897. Good condition. Dover, Frame 20" x 31 1/2". Good condition. Collection of Margaret Ann Baker. Estimate: 50.00 - 75.00



708 Misc. Lot

Misc. lot including: early bicycle collectibles "dog scarer" pistol, Wald Wrench, Dudley Tool Co. wrench, spoke wrench, BF Goodrich jiffy repair tool, modern Crawford Bicycle Factory fob. Good condition. Dover, Delaware. Frame 20" x 31 1/2". Good condition. Collection of Margaret Ann Baker. Estimate: 50.00 - 100.00



709 Misc. Lot

Misc. lot including: Wheelmen and bicycle lot including photos, books, magazines, ephemera, Norm Batho bicycle music disc, 1950's license plates, reproduction Howe Bicycle, high wheel garden ornament, reproduction Crawford poster, print blocks. Good to fair condition. Good condition. Collection of Margaret Ann Baker. Estimate: 50.00 - 75.00



710 1948 Schwinn Bicycle

1948 Schwinn bicycle. Kelly Springfield 26 x 2.125 tires, rear rack, bell, Schwinn handgrips. Original fair condition. Estimate: 150.00 - 250.00



711 Trek 2300 Bicycle

Trek 2300 road bicycle. Rolf Vector Comp rims. 23" frame. Good condition. Estimate: 150.00 - 200.00



712 Ross Mountain Bicycle

Ross Mountain bicycle. 22" frame. Good condition. Estimate: 50.00 - 75.00



713 Western Flyer Bicycle

C. 1950's Western Flyer NewsBoy Special bicycle. 18" frame. As found. Estimate: 50.00 - 75.00



714 Mongoose Mountain Bicycle

Mongoose Mountain bicycle. 23" frame. As found. Estimate: 50.00 - 75.00



715 Cramerotti Lightweight Bicycle

Cramerotti Titanio lightweight bicycle. 24" frame. Good condition. Estimate: 75.00 - 100.00



716 GT Mountain Bicycle

GT Lts-3 mountain bicycle. 19" frame. Good condition. Mavic equipped. Estimate: 75.00 - 100.00



31st Annual Bicycle Auction, October 21, 2023 10/21/2023

LOT #

717 Specialized Mountain Bicycle

Specialized Hard Rock mountain bicycle.
21" frame. As found. Estimate: 50.00 - 75.00



718 Jamis Mountain Bicycle

Jamis Explorer mountain bicycle. 15" frame.
As found. Estimate: 25.00 - 50.00



719 Colnago Lightweight Bicycle

Colnago Décor lightweight bicycle. 23" frame. Good condition. Estimate: 75.00 - 100.00



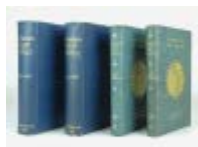
720 Tricycles

Lot (2) vintage tricycles (Murray and MTD). Fair condition. Collection of Margaret Ann Baker. Estimate: 50.00 - 75.00



721 Bicycle Books

Lot (4) books including: (2) Volumes "ACROSS ASIA ON A BICYCLE" (Allen and Sachtleben 1894 New York, The Century CO.), "TEN THOUSAND MILES ON A BICYCLE" (Karl Kron, 1887). Good condition. Ed & Marion Gerling Collection. Estimate: 50.00 - 100.00



722 Bicycle Ephemera

Lot of bicycle ephemera including 1892-3 Wheelmen Illustrated, 1895-98 L.A.W. Bulletins, 1893-99 L.A.W. Bulletins, 1895-6 Munsey Magazines, 1980 L.A.W. Wheelmen Magazines, 1897 Godey's Recreation Magazines. Boneshaker S.V.CC. Vol. 1-125. Ed & Marion Gerling Collection. Estimate: 50.00 - 75.00



723 Wheelmen Books

Lot including Outing And The Wheelman Vol.III, V, IV, 50 Years of Schwinn bicycles, The Wheelmen Vol. I, Wheelmen Vol. 2, Outing 33, Outing Vol. XXIX. Fair-good condition. Ed & Marion Gerling Collection. Estimate: 50.00 - 100.00



724 Bicycle Books

Lot (4) bicycle books including: (2) "AROUND THE WORLD ON A BICYCLE" (Thomas Stevens, Scribners New York 1887), (2) "THE BADMINTON LIBRARY". Good condition. Ed & Marion Gerling Collection. Estimate: 50.00 - 100.00



725 Bicycle Books

Lot (18) early bicycle books. Includes: "CYCLING FOR HEALTH AND PLEASURE", "THE AMERICAN BICYCLER", "CYCLING", "TWO PILGRIM'S PROGRESS", "THE WHEELS OF CHANCE", "Garmania Kalendar 1899", "ROUND THE WORLD ON A BICYCLE", "OUT OF POOR LIBRARY", "THE DONKEY HORSE", "TRAVEL IN ENGLAND", "Bike-Ways", "BARTLEET'S BICYCLE BOOK", "THE BICYCLERS AND THREE OTHER FARCES", "CYCLING ART", "Engine Whistles", "HOW I LEARNED TO RIDE THE BICYCLE", "The All-England Series Cycling", "THE ROMANCE OF THE BICYCLIST'S YOURING CLUB". Fair-good condition. Ed & Marion Gerling Collection. Estimate: 75.00 - 100.00



726 Bicycle Books

Large collection of bicycle related books. Ed & Marion Gerling Collection. Estimate: 50.00 - 100.00



31st Annual Bicycle Auction, October 21, 2023 10/21/2023

LOT #

727 Bicycle Stands

Lot (4) high wheel bicycle stands. Ed & Marion Gerling Collection. Estimate: 50.00 - 75.00



728 1960's Schwinn Bicycle

1960's Schwinn bicycle. As found. Estimate: 10.00 - 20.00



729 Bicycle Lot

Lot including Columbia leather tool bag, "THE BRILLIANT" bicycle lamp (6 1/2" Ht.), early bicycle photographs, Schrader tire gauge, handlebar flag holder, goggles. Fair-good condition. Estimate: 50.00 - 75.00



730 Misc. Lot

Lot including boxed Lee Petty battery additive, Harley Davidson bearings. Fair condition. Estimate: 25.00 - 35.00



731 Misc. Lot

Misc. lot including: collection of bicycle models, toys, sculptures, models, approx. (42) pieces. Good condition. Estimate: 25.00 - 35.00



732 Wooden Tricycle Lot

Two wooden tricycles C. 1940. Estimate: 25.00 - 50.00



733 Misc. Lot

Misc. lot including: stein, planter, Holly Hobby plate, tea cup and saucer, plate, (7) glasses, French decanter with boneshaker and high wheel motif 12 1/2" Ht.. Good condition. Estimate: 25.00 - 35.00



734 Misc. Lot

Misc. lot including: NOS bike speedometer, "Chief" bell, wheel driven gong bell, Diamond lamp, Halfords repair outfit, (2) different cyclists cups. Good - fair condition. Estimate: 25.00 - 35.00



735 Pair of Tintypes

Pair of similar tintypes. Studio posted females with their pneumatic safeties 2 1/4" x 3 1/4". Good condition. Estimate: 25.00 - 50.00



736 Misc. Lot

Misc. lot including: bicycle art: print "Forgotten Picnic", print gent on hobby horse, large French city litho by Michel Delacroix. Frame 27 3/4 x 32 1/4". Good condition. Estimate: 25.00 - 35.00



737 Bicycle Photo Lot

Bicycle photo lot including: couple on high wheel tandem, women with floral decorated pneumatic safety 1897, studio posed woman, children with tricycle, studio posed young gent, studio posed gent, real photo post card "on vacation". Poor-good condition. Estimate: 25.00 - 50.00



738 Bicycle Ephemera Lot

Bicycle ephemera lot including: (3) trade cards, (2) humorous post cards. Good - fair condition. Estimate: 25.00 - 35.00



739 Bicycle Ephemera Lot

Bicycle ephemera lot including: various advertising cut outs, Schwinn comic book, history pamphlet Vermont wheelmen, Framed cut out. Good - fair condition. Estimate: 25.00 - 35.00



31st Annual Bicycle Auction, October 21, 2023 10/21/2023

LOT #

740 Heywood Wakefield Wicker Baby Carriage

Heywood Wakefield wicker baby carriage.
Good condition. Estimate: 25.00 - 50.00



741 Skuut Child's Bicycle

Skuut child's bicycle. Good condition.
Estimate: 25.00 - 50.00



742 Misc. Lot

Lot including Raleigh glass sign (10 3/4" X 14"), Brooks sign (12" x 15"), Sturmey-Archer advertising (16" x 12 1/2"), Lance Armstrong lunchbox, posters, early ephemera. Estimate: 50.00 - 100.00



743 Iver Johnson Bicycle

Iver Johnson pneumatic safety bicycle. 19" frame. As found. Estimate: 75.00 - 100.00



744 Pair of Automobile Skirts

Pair of rear automobile skirts, fits a 1938-41 Ford and 1946-48 Mercury. Painted blue. 33" x 16". Estimate: 25.00 - 50.00



745 Tricycle

American National C. 1920's tricycle.
Original paint. Collection of Margaret Ann Baker. Estimate: 50.00 - 75.00



746 Spring Wheel Cover

Unusual spring wheel cover. Good condition. Collection of Margaret Ann Baker. Estimate: 50.00 - 75.00



747 Bicycle Lot

Lot (2) barn find Pre-War bicycles. Shelby Flying Cloud and Victor. Collection of Margaret Ann Baker. Estimate: 25.00 - 50.00



748 Pre-War Ardmore Bicycle & Frame

Pre-War Ardmore bicycle. Barn find condition. 19" frame, along with an Iver Johnson barn find frame. Collection of Margaret Ann Baker. Estimate: 50.00 - 75.00



749 Gitane Lightweight Bicycle

Vintage Gitane lightweight bicycle. 22" frame. Good condition. Estimate: 50.00 - 75.00



750 Gitane Lightweight Bicycle

Gitane lightweight bicycle. 24" frame. Good condition. Estimate: 75.00 - 100.00



751 Book Lot

Lot of various bicycle related books. Collection of Margaret Ann Baker. Estimate: 25.00 - 50.00



752 Misc. Lot

Lot including Framed Crawford bicycle store photograph. Fair condition. Overall 12 1/2" x 15 1/2", Hagerstown plaques, framed Hagerstown Club related artwork. Collection of Margaret Ann Baker. Estimate: 25.00 - 50.00



753 Columbia Bicycle Poster

Early Columbia Cycle Family poster. Fair condition. Overall 22 1/2" x 22 1/2". Collection of Margaret Ann Baker. Estimate: 25.00 - 50.00



Copake Auction Inc.**31st Annual Bicycle Auction, October 21, 2023 10/21/2023****754 Artwork Lot**

Lot (2) pieces including "ANNUAL MEET OF THE WHEELMEN..." (overall 17" x 21"), "NO THOROUGHFARE" (overall 17" x 23"). Fair-good condition. Collection of Margaret Ann Baker. Estimate: 25.00 - 50.00

**760 Bicycle Catalogs**

Lot of bicycle catalogs including Columbus Bicycle Co., Mareh-Davis Ccle, 1915 The Racycle, Howard A Smith & Co. (ex: Mamone collection). Good condition. Collection of Margaret Ann Baker. Estimate: 25.00 - 50.00

**755 Bicycle Stands**

Lot of high wheel bicycle stands. Collection of Margaret Ann Baker. Estimate: 50.00 - 100.00

**761 Dust Shields**

Lot (2) Columbia Expert dust shields. Good condition. Collection of Margaret Ann Baker. Estimate: 25.00 - 50.00

**756 Tire & Rim Lot**

Lot including wooden stand, fenders, tires, rims. Collection of Margaret Ann Baker. Estimate: 50.00 - 75.00

**762 Crawford Bicycle Lot**

Lot (6) Crawford bicycle catalogs and various ephemera. Fair-good condition. Collection of Margaret Ann Baker. Estimate: 50.00 - 75.00

**757 Catalog Lot**

Lot (2) catalogs including 1894 Crawford and 1911-12 Motorcycle and Bicycle Accessories. Fair condition. Collection of Margaret Ann Baker. Estimate: 25.00 - 50.00

**763 Framed Ribbons**

Lot of framed ribbons including bicycle, fraternal, firemen etc.. Overall 20" x 20 1/2". Good condition. Collection of Margaret Ann Baker. Estimate: 25.00 - 50.00

**758 Schwinn "The World" Catalog**

Schwinn "THE WORLD" catalog. Good condition. Collection of Margaret Ann Baker. Estimate: 300.00 - 400.00

**764 Misc. Lot**

Lot including framed York Penna. Fairground photograph (overall 12" x 14"), The Racycle stock certificate (overall 17" x 11"), 1905 German Bicycle club framed photograph (overall 15 1/2" x 17"). Good condition. Collection of Margaret Ann Baker. Estimate: 75.00 - 100.00

**759 Bicycle Catalogs**

Lot of bicycle catalogs including 1894 Gormully & Jeffery (sold at Copake Auction, Ex: Roger Johnson), 1895 Gormully & Jeffery. Fair condition. Collection of Margaret Ann Baker. Estimate: 25.00 - 50.00

**765 Framed Bicycle Advertisements**

Lot (3) framed bicycle advertisements (largest 17" x 20"). Good condition. Collection of Margaret Ann Baker. Estimate: 25.00 - 35.00



31st Annual Bicycle Auction, October 21, 2023 10/21/2023**LOT #****766 Misc. Lot**

Lot (4) folk art bicycle carts. Largest 23" L., celluloid toy (as found). Collection of Margaret Ann Baker. Estimate: 25.00 - 50.00

**767 Wheelmen Lot**

Lot (12) showcases with various Wheelmen memorabilia. Cases included. Collection of Margaret Ann Baker. Estimate: 50.00 - 100.00

**768 Bicycle Letterheads**

Album with early bicycle letterheads. Collection of Margaret Ann Baker. Estimate: 25.00 - 50.00

**769 The Wheelmen Newsletter Lot**

Lot of The Wheelmen Newsletters in binder. Collection of Margaret Ann Baker. Estimate: 25.00 - 50.00

**770 Misc. Lot**

Lot including bicycle chains, oilers, tubes etc.. Collection of Margaret Ann Baker. Estimate: 25.00 - 50.00

**771 Clothing Lot**

Lot of various cyclist and misc. clothing, hats etc.. Collection of Margaret Ann Baker. Estimate: 25.00 - 50.00

**772 Misc. Lot**

Misc. lot including decorative bicycle items, Crawford mirror, ephemera, Schwinn pump in box etc.. Collection of Margaret Ann Baker. Estimate: 50.00 - 75.00

**773 Gold Bicycle Medal**

Bicycle medal. Marked Solid Gold. Century Road Club Association. Ed Berry Collection. Estimate: 50.00 - 75.00

**774 Bicycle Lamp**

Early Solar bicycle lamp. 6 3/4" Ht.. Good condition. Estimate: 40.00 - 60.00

**775 Pneumatic Safety Frame & 3 Wheels**

Lot including pneumatic safety and 3 wheels. Barn find condition. Estimate: 100.00 - 150.00

**776 Pneumatic Safety Frame & 2 Wheels**

Lot including pneumatic safety frame and 2 wheels. Barn find condition. Estimate: 100.00 - 150.00

**777 Cycling Jerseys**

Lot of cycling jerseys (medium, large, extra large), racing cards, leather toe straps. Estimate: 50.00 - 100.00

**778 Tour de France Photo Prints**

Lot including racing postcards (some autographed), Tour de France photo prints (11" x 14"). Good condition, one as found. Estimate: 50.00 - 75.00

**779 Autographed Racing Jerseys**

Collection of (7) autographed racing jerseys. Estimate: 100.00 - 150.00



31st Annual Bicycle Auction, October 21, 2023 10/21/2023**LOT #****780 Misc. Lot**

Misc. lot including handlebar flag, bells, lights. Fair-good condition. Estimate: 25.00 - 50.00

**781 Wheelmen Magazines**

Collection of Wheelmen magazines. Collection of Margaret Ann Baker. Estimate: 50.00 - 75.00

**782 Book: Ten Thousand Miles On A Bicycle**

Book: Ten Thousand Miles On A Bicycle. Unopened. Collection of Margaret Ann Baker. Estimate: 50.00 - 75.00

**783 Print "WHEELING ON RIVERSIDE DRIVE"**

Original print "WHEELING ON RIVERSIDE DRIVE", professionally framed and matted. Sight 20" x 15", overall 27" x 21". Good condition. Estimate: 50.00 - 75.00

**784 Misc. Lot**

Lot (5) pieces including sterling silver engraved flask with high wheel (5 3/4" Ht.), bronze 2" medallion engraved "L' Equipe Ronazzo Satori Luciano Audiberti, Et Cejudo A Son Manager Mre. Le Sech 28-9-28 (worn), advertising mirror (1 3/4" D.), "Lucas Cyclealities" cup (2" D.), vest pocket cup (1 1/2" D.). Estimate: 100.00 - 150.00

**785 Pair Mavic Rims**

Pair C. 1992 tubular Mavic rims with Vittoria sew up tires. Mavic Mach 2, CD 2, V shape. Good condition. Estimate: 50.00 - 75.00

**786 Framed Harpers Weekly**

Framed 1898 original Harper's Weekly "END OF THE DAY" (A.B. Frost). Sight 15 1/2" x 10 1/2", overall 21" x 16". Good condition. Estimate: 50.00 - 75.00

**787 Bicycle Magazines**

Bike Monkey magazines, Issues 1-16, entire run, and Bicycle Times, Issues 1-46, entire run. Estimate: 25.00 - 50.00

**788 Indian Motorcycle Lot**

Lot including (3) Indian Day buttons (2002, 2003), and Indian Motorcycle Museum certificate. Good condition. Estimate: 25.00 - 35.00

**789 Columbia Paper Sign**

Vintage Columbia paper sign "AMERICA'S FIRST BICYCLE / SINCE / 1877". 16" x 11". Good condition. Case not included. Estimate: 40.00 - 60.00

**790 1923 Corona Stock Certificate**

1923 Corona stock certificate. Good condition. 14 1/2" x 10 1/2". Estimate: 50.00 - 75.00

**Terms:**

Cash - Check - Visa - Mastercard - Discover

20% buyer's premium

25% buyer's premium for LIVE AUCTIONEERS and INVALUABLE/AUCTION ZIP online purchases

First time buyers must establish credit prior to auction to pay by check.

Local sales tax: NYS Sales Tax 8%

Conditions of Sale

1. Some of the lots in this sale are offered subject to a reserve.

This reserve is a confidential minimum price agreed upon by the consignor & COPAKE AUCTION below which the lot will not be

31st Annual Bicycle Auction, October 21, 2023 10/21/2023

sold. In any event when a lot is subject to a reserve, the auctioneer may reject any bid not adequate to the value of the lot.

2. All items are sold "as is" and neither the auctioneer nor the consignor makes any warranties or representations of any kind with respect to the items, and in no event shall they be responsible for the correctness of the catalogue or other description of the physical condition, size, quality, rarity, importance, medium, provenance, period, source, origin or historical relevance of the items and no statement anywhere, whether oral or written, shall be deemed such a warranty or representation. Prospective bidders should inspect the merchandise thoroughly before bidding to determine its condition, size and whether or not it has been repaired or restored. All sales are final & refunds will not be given.

3. The auctioneer reserves the right to withdraw any merchandise before the sale and shall have no liability whatsoever for such withdrawal.

4. The auctioneer will be the final judge as to who is the successful bidder. In the event of any dispute the auctioneer shall at his discretion decide to reopen the bidding or not.

5. As a service to our customers the COPAKE AUCTION will execute absentee bids if so authorized in writing. Absentee bids should be made on the Bidder Form available in the office. This form should be clearly and completely filled out. All absentee bids will be executed competitively during the sale. Items will be purchased for the lowest price possible regardless of the amount of the order bid. Where two absentee bidders bid the same amount the first received will be honored. This service is offered as a convenience and COPAKE AUCTION will not be responsible for any errors or failures to properly execute the bids.

6. On the fall of the auctioneer's hammer, ownership to the offered lot will pass to the highest bidder acknowledged by the auctioneer, and as such the bidder assumes full risk and responsibility and will pay the full purchase price of the item (s).

7. All items are subject to a 20% buyer's premium or a 25% buyer's premium for LIVE AUCTIONEERS and INVALUABLE/AUCTION ZIP online purchases which will be added to the successful bid price and is payable by the purchaser as part of the total purchase price.

8. All items are subject to an 8% sales tax unless the purchaser possesses a sales tax exemption number and supplies a copy of it to Copake Auction.

9. All accounts are to be settled by the end of the sale. We do not accept checks from first time buyers unless accompanied with a bank letter of credit or previous approval from the auctioneer. Payment may also be made by cash, MasterCard, Discover Card or Visa.
