

**Copake Auction Inc.**  
**PO BOX H - 266 Route 7A**  
**Copake, NY 12516**

**Phone: 518-329-1142**

**October 22 2011, Cataloged Estate Auction 10/22/2011**

**LOT #**

**1 Gunther Uecker Sculpture**

Important unreserved Gunther Uecker nail sculpture from the estate of artist Fred Eng. Signed and dated 1964. 24 1/8" x 48 1/8". Gunther Uecker Germany 1930-present. Provenance: Fred Eng estate in Tivoli New York. Mr. Eng commissioned this artwork from Mr. Uecker and this piece has remained in the family from 1964 to present and was consigned directly from the family. (Note: we require additional bidder information to bid on this item, if interested please contact us 518-329-1142 to request an application) 120,000.00 - 180,000.00



**2 19th c. Continental Chest Drawers**

19th c. Continental 4 drawer chest. 48" W 24 1/2" D 39 1/2" Ht. 400.00 - 600.00



**3 Modernist Tea Cart**

Modernist rosewood tea cart. 29" W 18" D 28" Ht. 300.00 - 500.00



**4 Pair 19th c. Continental Paintings**

Pair 19th c. oil on canvas Continental landscapes in walnut frames. Sites 19 1/4" x 26" each. 200.00 - 400.00



**5 Glassware**

Lot over 20 pcs. early painted Cranberry and Amberina glass including pitcher, decanters, cups etc. 50.00 - 75.00



**LOT #**

**6 Jacobean Style Server**

Jacobean style server. 72" W 19" D 37" Ht. 250.00 - 450.00



**7 Dutch Marquetry Cabinet**

Early Dutch Marquetry cabinet., 40" W 15" D 78" Ht. 400.00 - 600.00



**8 19th c. Needlework**

Early 19th c. oval needlework man and woman with dog. Site 14 1/2" x 18". 400.00 - 600.00



**9 19th c. Sampler**

19th c. sampler having alphabet, verse, house, animals, parrot etc. Dated 1835. Damage to right corner. Site 17 1/2" x 16 1/4". 250.00 - 450.00



**10 19th c. Sampler**

19th c. sampler having alphabet, multiple verses and crowns. Signed and dated "Elizabeth Ann Warner Dec..18..(damage to last two numbers). Site 14" x 13". 150.00 - 250.00



**11 19th c. Sampler**

19th c. Adam And Eve sampler having trees, house, flowers etc., fading and staining. Signed 'Elizebeth Rethbone". Site 17 1/2" x 11 1/4". 50.00 - 100.00



October 22 2011, Cataloged Estate Auction 10/22/2011

**LOT #**

---

**12 19th c. Sampler**

19th c. sampler having alphabet, sheep, trees, arbor etc.. Signed and dated "Elizabeth Hawkes Dec. 15th 1828 Aged 15 Years". Site 14" x 12". 250.00 - 350.00



**13 19th c. Sampler**

19th c. sampler having alphabet, birds, butterfly, animals, crown etc. Site 27" x 11". Losses. 100.00 - 150.00



**14 19th c. Painting Indians In Landscape**

19th c. oil on canvas Indian family near waterfall and mountains. Flaking at bottom left corner. Site 23 3/4" x 33 1/2". Partial canvas shows "Winsor & Newton". 800.00 - 1,200.00



**15 19th c. Ocean Liner Print**

19th c. Ocean Liner print "North German Lloyd S.S. Co.", "Oelrichs & Co., General Agents 5 Broadway New York". Also has "Kunst-Anstalt Wilh..m Jontzen Bremen". Site 31 1/2" x 41 1/2". 200.00 - 300.00



**16 19th c. Pastel Boy Signed David K. Case**

19th c. pastel little boy with ball near tree. Background has river scene with Paddlewheeler. Some damage. Site 35" x 28". Signed on back "David K. Case painted May 18, 1862". Also in chalk on back "The Welsh ....? at aged 10 years". 600.00 - 800.00



**LOT #**

---

**17 Staffordshire Lot**

Lot 19th c. Staffordshire including spaniels, lamb, hunter etc. Imperfections. 100.00 - 150.00



**18 French Bergere Chair**

French Ormolu mounted Bergere chair with lions head supports under arms. 18" Seat Ht. 42" Overall Ht. 500.00 - 700.00



**19 Tramp Art Box**

19th c. tramp art two drawer box. 13" Ht. 100.00 - 200.00



**20 Needlework "Motto" Collection**

Needlework "Motto" Collection. 20 framed examples. 200.00 - 250.00



**21 Needlework "Motto" Collection**

Needlework "Motto" Collection. 9 framed examples. 100.00 - 150.00



**22 Needlework "Motto" Collection**

Needlework "Motto" Collection. 10 framed examples. 100.00 - 150.00



**23 Needlework "Motto" Collection**

Needlework "Motto" Collection. 11 framed examples. 100.00 - 150.00



October 22 2011, Cataloged Estate Auction 10/22/2011

**LOT #**

---

**24 Needlework "Motto" Collection**  
Needlework "Motto" Collection. 15 framed examples. 150.00 - 250.00



**25 Needlework "Motto" Collection**  
Needlework "Motto" Collection. 15 framed examples. 150.00 - 250.00



**26 Needlework "Motto" Collection**  
Needlework "Motto" Collection. 10 framed examples. 100.00 - 150.00



**27 Needlework "Motto" Collection**  
Needlework "Motto" Collection. 12 examples. 100.00 - 150.00



**28 19th c. Painting Signed "HVS Seymour"**  
19th c. oil on canvas portrait of a gentleman in gilt frame. Site 32 1/2" x 25 1/2". Signed "HVS Seymour". 400.00 - 600.00



**29 19th c. Portrait Woman**  
19th c. oil on canvas portrait of a woman. Frame has losses. Site 24" x 29". 300.00 - 500.00



**30 19th c. Portrait Woman**  
19th c. oil on canvas portrait of a woman. Damaged. Frame has losses. Site 24" x 29". 200.00 - 300.00



**LOT #**

---

**31 19th c. Portrait Woman**  
19th c. oil on canvas portrait of a woman in gilt frame. Site 23 1/4" x 19 1/2". 200.00 - 300.00



**32 Pair Victorian Jelliff Chairs**  
Pair 19th c. Victorian Jelliff chairs. Arms have carved heads. 16" Seat Ht. 41" Overall Ht. Note inlaid Neo-Classical bronze medallions on crest. 300.00 - 500.00



**33 19th c. Needlework**  
19th c. needlework little girl with goat. Framed in shadowbox. Note quality frame. 21 1/2" x 25" Overall. 100.00 - 150.00



**34 19th c. Victorian Armchair**  
19th c. carved Victorian armchair. 18" Seat Ht. 52" Overall Ht. 200.00 - 300.00



**35 19th c. Staffordshire Figure**  
19th c. Staffordshire figure man. 18" Ht. 100.00 - 150.00



**36 19th c. Staffordshire Figure**  
19th c. Staffordshire figure man. 17 1/4" Ht. 100.00 - 150.00



**37 Pair Adirondack Armchairs**  
Pair Adirondack armchairs. 17" Seat Ht. 33" Overall Ht. 150.00 - 250.00



October 22 2011, Cataloged Estate Auction 10/22/2011

**LOT #**

**38 19th c. Card Table**

19th c. Empire mahogany card table. Top 36" x 17 1/2" (closed), 30 1/2" Ht. 200.00 - 300.00



**39 Pair 19th c. Portraits**

Pair 19th c. oil on panel portraits of children. Unframed. 12" x 16". 200.00 - 400.00



**40 Early 19th c. Watercolor**

Early 19th c. watercolor beggar woman. Site 9 1/4" x 7 1/4". 150.00 - 250.00



**41 Asian Bowl**

Asian porcelain bowl. 10 1/2" Ht. 50.00 - 100.00



**42 Japanese Hibachi**

Early bronze Japanese hibachi. 14 3/4" Ht. 75.00 - 125.00



**43 Japanese Bronze Bowl**

Early Japanese bronze bowl. 11" Ht. 75.00 - 125.00



**44 Japanese Bronze Vase**

Early Japanese vase. 12 3/4" Ht. 75.00 - 125.00



**LOT #**

**45 Tiffany Sterling Lot**

Tiffany sterling lot including 5" x 7" frame, , 2 1/2" Diameter bowl, along with a sterling horse pin and tray (not Tiffany). 208 grams. 200.00 - 300.00



**46 Fountain**

Fountain boy and goose in verdigris patina. 22" Ht. Imperfections. 100.00 - 150.00



**47 Gerald Ford Signed Baseball**

Gerald Ford signed baseball. Official American League Rawlings ball signed on the sweet spot. 200.00 - 300.00



**48 Derek Jeter Autographed Rookie Card**

Derek Jeter autographed rookie card signed in blue sharpie. 300.00 - 400.00



**49 Buffalo Sabers Signed Postcards**

Lot of Buffalo Sabers signed postcards. 50.00 - 100.00



**50 19th c. Hudson River School Painting**

19th c. oil on canvas Hudson River school with castle and couple standing pointing toward river. Site 13 1/2" x 19 1/2". 400.00 - 600.00



**51 Girandoles**

Set of 3 19th c. Girandoles. 15" Ht. 75.00 - 125.00



October 22 2011, Cataloged Estate Auction 10/22/2011

**LOT #**

**52 Art Glass Shades**

Lot 5 early art glass shades. One signed "Quezel". Imperfections. Shades 5 1/2" Ht. 75.00 - 125.00



**53 Asian Porcelains**

Lot 2 Asian porcelain platters. 11 1/4" and 19 1/2" W. 100.00 - 150.00



**54 Tiffany Lot**

Lot signed Tiffany including 5" vase, 10" bowl, 2 shades (unsigned). 100.00 - 150.00



**55 Jacobean Style Table**

Kittenger Jacobean style table. Top 77" x 30", 32" Ht. 400.00 - 600.00



**56 19th c. Victorian Chest**

Rare form 19th c. Victorian walnut high chest. 40" W 20" D 67 1/2" Ht. 200.00 - 300.00



**57 New York Islanders Signed Photo Postcards**

Lot of New York Islanders signed photo postcards. 50.00 - 100.00



**58 19th c. Empire Chest Drawers**

19th c. Empire chest drawers. 40" W 19" D 47 1/2" Ht. 50.00 - 100.00



**LOT #**

**59 19th c. Victorian Table**

19th c. Victorian walnut table. Top 18" x 32" with 9" Leaves, 30" Ht. 50.00 - 75.00



**60 Porcelain Clock**

Early porcelain blue and white clock. 10 1/2" Ht. 40.00 - 60.00



**61 Carriage Clock**

Ansonia brass carriage clock. 9" Ht. 50.00 - 75.00



**62 19th c. Empire Chest Drawers**

19th c. mahogany Empire chest drawers with carved columns and feet. 49" W 22" D 52" Ht. 200.00 - 300.00



**63 19th c. Spool Cabinet's**

19th c. Clark's spool cabinet. 20" W, along with a 2 drw. 19th c. spool cabinet. 100.00 - 150.00



**64 Chinese Stand**

19th c. Chinese marble top stand. 32" Ht. 50.00 - 75.00



**65 19th c. Stand**

19th c. 2 drawer stand. Top 22 1/2" x 17 1/4", 29" Ht. 75.00 - 125.00





October 22 2011, Cataloged Estate Auction 10/22/2011

**LOT #**

**66 Silverplate Punchbowl Set**

Early silverplate punchbowl with 12 cups. This lot was previously sold and re-offered due to non payment. 250.00 - 350.00



**67 Silverplate Tea Service**

Wallace Co. silverplate 5 pc. tea service. This lot was previously sold and re-offered due to non payment. 150.00 - 250.00



**68 19th c. Painted Trunk**

19th c. dometop trunk in blue paint. 37" W. 250.00 - 350.00



**69 19th c. Blanket Box**

19th c. Hudson Valley blanket box in blue paint. 37 1/4" W 18" D 17 1/2" Ht. 200.00 - 300.00



**70 19th c. Empire Card Table**

19th c. mahogany Empire card table. Top 34" x 16 1/4" (closed), 29" Ht. 75.00 - 125.00



**71 Easel**

Brass mounted easel. 60" Ht. 50.00 - 75.00



**72 Ormolu Mounted Side Table**

Ormolu mounted single drawer table. Top 19" x 15", 28" Ht. 50.00 - 75.00



**LOT #**

**73 Iron Base Butcher Block Top Table**

Iron base butcher block top table. Top 42" Diameter 29" Ht. 50.00 - 100.00



**74 Tole Tray Lot**

Lot 8 early and vintage painted tole trays. 50.00 - 100.00



**75 Victorian Mirror**

19th c. Victorian mirror. 34" x 40". 50.00 - 100.00



**76 Dining Table**

Cherry twin pedestal dining table. Top 40" x 60" with 2 9" Leaves. 50.00 - 100.00



**77 Medicine Cabinet**

Vintage medicine cabinet "Property Of Consolidated Laundries Corporation". 18" W 25" Ht. 50.00 - 75.00



**78 Set Of Hitchcock Chairs**

Set of 6 rush seat Hitchcock chairs. 17" Seat Ht. 35" Overall Ht. 150.00 - 250.00



**79 Pair Flemish Style Armchairs**

Pair of Flemish style armchairs. 17" Seat Ht. 39 1/2" Overall Ht. 150.00 - 250.00



October 22 2011, Cataloged Estate Auction 10/22/2011

**LOT #**

**80 Chippendale Style Armchair**

Mahogany Chippendale style armchair. 18"  
Seat Ht. 45" Overall Ht. 50.00 - 100.00



**81 Chippendale Style Armchair**

Mahogany Chippendale style armchair. 18"  
Seat Ht. 44" Overall Ht. 50.00 - 100.00



**82 Trade Sign**

19th c. trade sign "LEICHT'S ALE &  
LAGER", 2 sided. Worn. 9 1/2" x 61".  
50.00 - 75.00



**83 Asian Bowl**

Asian porcelain bowl. 13" Diameter. 40.00  
- 60.00



**84 Coverlet Lot**

Lot 3 19th c. blue and white coverlets.  
Some damage. 50.00 - 100.00



**85 Oriental Rug Runner**

Oriental rug runner. 30" x 11' 8". 50.00 -  
100.00



**86 Bristol Vases**

Lot 4 19th c. hand painted Bristol glass  
vases. 40.00 - 60.00



**LOT #**

**87 Glass Lot**

Large lot over 60 early and vintage pieces  
clear glass including pattern glass pitchers,  
etched decanters, cut candy dish, 1898  
Manila pitcher "Gridley you may fire  
when ready", hair receivers, fish platter etc.  
50.00 - 100.00



**88 19th c. Westward Ho Pressed Glass Compote**

19th c. "Westward Ho" (Gillinder & Sons  
C. 1879), pattern glass compote. 13" Ht.  
100.00 - 150.00



**89 Cutglass Lot**

Lot 4 pcs. early American cutglass  
including brilliant 11 1/2" compote,  
covered butter, 8" pitcher and 7 1/4"  
compote. 100.00 - 150.00



**90 Quilt**

C. 1930' s Poinsettia applique quilt. 82"  
Square. 300.00 - 400.00



**91 Quilt**

C. 1940' s Ohio Wedding Band quilt. 68" x  
84". 200.00 - 300.00



**92 Quilt**

19th c. Pinwheel and Eight Point Stars  
quilt. 70" x 80". 300.00 - 400.00



**93 Quilt**

19th c. Four Patch quilt. 82" Square.  
300.00 - 350.00



October 22 2011, Cataloged Estate Auction 10/22/2011

**LOT #**

**94 Quilt**

19th c. Mass. Log Cabin quilt made by Elizabeth Erbeck of Winthrop Mass., note some yellow centers to represent makers intent to support the gold standard of currency. 66" x 74". 300.00 - 400.00



**95 Quilt**

19th c. Ohio Churndash quilt. 74" x 77". 300.00 - 400.00



**96 Heisey Lot**

Lot 4 pcs. Heisey glass. 25.00 - 50.00



**97 Early Glass Lot**

Lot 11 early various pattern, etched and pressed glass compotes. 50.00 - 75.00



**98 Misc. Lot**

Misc. table lot including tall vase, pr. large brass candlesticks, shelves, oval needlework, candel mold, stoneware etc. 50.00 - 75.00



**99 Lamp Lot**

Lot including Victorian figural oil lamp (electrified) and marble lamp. 25.00 - 35.00



**100 Pair Early Clear Glass Candelabra**

Pair early clear glass candelabra. 24" Ht. 200.00 - 300.00



**LOT #**

**101 Weathervane Ship**

Weathervane sailing ship. 27" W 38 1/2" Ht. 3,000.00 - 3,500.00



**102 Weathervane Owl**

Weathervane owl on broom. 42" W 25" Ht. 5,000.00 - 6,000.00



**103 Weathervane Steer**

Weathervane steer. 23" W 15" Ht. 3,000.00 - 4,000.00



**104 Hudson Bay Blanket**

Vintage Hudson Bay blanket. 50.00 - 75.00



**105 Quilt**

19th c. Penn. log cabin quilt. 74" x 75". 200.00 - 300.00



**106 Quilt**

1930' s star quilt. 76" x 88". 200.00 - 300.00



**107 Quilt**

Early Penn. all white brides quilt. 78" x 88". 200.00 - 300.00



**108 Quilt**

19th c. Princess Feather quilt. 80" Square. 300.00 - 400.00





October 22 2011, Cataloged Estate Auction 10/22/2011

**LOT #**

**109 Quilt**

19th c. Four Frogs quilt. 74" x 76". 175.00 - 225.00



**110 Quilt**

C. 1900 School House quilt 68" x 78". 300.00 - 400.00



**111 Quilt**

19th c. red and white storybook quilt. 74" Square.. 200.00 - 250.00



**112 Quilt**

C. 1940' s Poppies applique quilt. 76" x 88". 100.00 - 150.00



**113 Quilt**

C. 1930' s Hummingbird Snowball quilt. 74" x 95". 200.00 - 250.00



**114 Quilt**

C. 1920' s floral applique. 73" x 92". 250.00 - 350.00



**115 Quilt**

C. 1920' s Oak Leaf applique. 78" Square. 300.00 - 350.00



**116 Quilt**

C. 1930' s Kansas Wedding Band quilt. 65" x 78". 200.00 - 250.00



**LOT #**

**117 19th c. Renaissance Revival Center Table**

19th c. Renaissance Revival marble top incised and inlaid center table. Super quality. 37" x 33", 29" Ht. 1,000.00 - 1,500.00



**118 19th c. Empire Center Table**

19th c. mahogany 12 sided marble top center table having center column with smaller columns and rolled ogee feet. 36" x 36", 30" Ht. 1,000.00 - 1,500.00



**119 19th c. Stoneware Jug**

19th c. stoneware 2 gallon jug with pheasant decoration. Has crack at base. 13 1/2" Ht. 75.00 - 125.00



**120 Vintage Thermometer**

Vintage "J & L Kaplan Bros. Inc. Millerton N.Y." thermometer. 8" x 10" Overall. 40.00 - 60.00



**121 Leather Holster**

Early leather holster stamped "U.S." also with initials "E.R.". 40.00 - 60.00



**122 Early Leather Leg Cuffs**

Early (Civil War ?) leather leg cuffs. 50.00 - 75.00



**123 Carl Sorensen Bronze Vase**

Mid Century Carl Sorensen bronze vase. 5 1/2" Ht. 40.00 - 60.00



October 22 2011, Cataloged Estate Auction 10/22/2011

**LOT #**

**124 Doorstop**

Early doorstop woman in dress. 9" Ht.  
50.00 - 100.00



**125 Victorian Bust Woman**

19th c. Victorian bronze bust woman. 11 1/2" Ht., some damage. 50.00 - 75.00



**126 19th c. Painting Cows**

19th c. oil on canvas landscape with cows.  
Site 7 1/2" x 11 1/2". 50.00 - 75.00



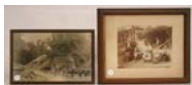
**127 Frames**

Lot 2 19th c. Victorian frames. Sizes include 12 1/4" x 18 1/2" and 12" x 15 1/2". 40.00 - 60.00



**128 Early Photos**

Lot two early photos in frames. One signed on back "Palmer Estate Sawmill W. Cornwall Ct.". 50.00 - 75.00



**129 Bronze Plaque**

Early bronze plaque fox hunting scene. Site 5" x 8". 40.00 - 60.00



**130 Bronze Bell**

Early bronze bell. 50.00 - 75.00



**LOT #**

**131 Desk Set**

Early repousse desk set including inkwell and blotter. 40.00 - 60.00



**132 Sword Letter Holder**

1920' crossed swords letter holder. 25.00 - 50.00



**133 Book Lot**

Misc. early books some titles including "Half-Hours With The Best Author" (4 volumes), "Brave Tom", "Peter Pan", "The Lone Ranger" etc. 25.00 - 50.00



**134 Painting Signed Adolfo Saporette**

Painting oil on canvas still life with flowers signed "Adolfo Saporette" (Italian 1914-?). Site 21" x 29". 150.00 - 250.00



**135 Painting Signed Neel Davis**

Painting watercolor of boy playing harmonica signed "Neel Davis". Site 23 1/2" x 17 1/4". 50.00 - 75.00



**136 Map Lot**

Lot two roll down maps including "Commercial And Library Map Of The United States" dated 1919 (some damage top top) and "National Map Company's County And Township Map Of New York" dated 1920. 100.00 - 150.00



October 22 2011, Cataloged Estate Auction 10/22/2011

**LOT #**

**137 Early Slide Ruler**  
Early slide ruler. 25.00 - 50.00



**138 Fishing Pole Lot**  
Lot including "Eastern Coast Tackle" fishing pole, "Payne" fly fishing pole, along with a vintage bow. 75.00 - 125.00



**139 Early Brass Compass**  
Early brass compass stamped "U.S.". 40.00 - 60.00



**140 Tantalus**  
Vintage tantalus. 40.00 - 60.00



**141 Frame**  
1920' s frame. Site 9 1/2" x 7 1/2". 25.00 - 35.00



**142 19th c. Painting Village Scene**  
19th c. oil on artist board village scene. Signed illegibly. Has Parisian label on back. Site 6 1/2" x 9". 50.00 - 100.00



**143 19th c. Waterbury Ogee Clock**  
19th c. mahogany case Waterbury Ogee clock. 26" Ht. 75.00 - 125.00



**144 Postcard Album**  
Lot approx. 140 vintage postcards, mostly real photo including soldier examples. 50.00 - 100.00



**LOT #**

**145 Bed Steps**  
Vintage wood and iron bed steps. 25.00 - 50.00



**146 19th c. Slipper Chairs**  
Lot 2 dissimilar slipper chairs. 50.00 - 100.00



**147 Early Tile**  
19th c. tile with dog. Various markings on back "BNY" etc. Tile 6" square. 40.00 - 60.00



**148 Painting Landscape**  
Early oil on board landscape with mountains. Site 4 1/2" x 3". Has label on back "Buxton & Snyder, Newburgh N.Y.". 50.00 - 75.00



**149 19th c. Painting**  
19th c. oil on canvas cow and men near campfire. Site 15 1/2" x 11 1/2". Has New York stamped canvas. 50.00 - 100.00



**150 Painting Signed A. Millrose**  
19th c. oil on canvas sheep signed "A. Millrose". Site 11 1/4" x 17 1/2". 100.00 - 150.00



**151 Painting Woman**  
Early 20th c. painting on artist board woman. Site 16 1/2" x 13 1/4". 40.00 - 60.00



October 22 2011, Cataloged Estate Auction 10/22/2011

**LOT #**

**152 Tinsel Painting**

19th c. tinsel painting basket of flowers.  
Site 13 1/2" x 15 1/2". 50.00 - 75.00



**153 Photos Avery Edwin Field**

Pair photo-palette prints landscapes signed  
"Avery Edwin Field". Site 7 3/4" x 9 1/2".  
50.00 - 75.00



**154 Drawings Signed W. Kermeth**

Pair drawings landscapes signed "W.  
Kermeth". Site 6 1/2" x 9". 40.00 - 60.00



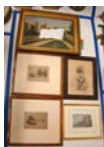
**155 18th c. Painting Continental School**

18th c. oil on canvas Continental School  
landscape with castle in background.  
Unframed. site 17" x 23 1/2". 200.00 -  
400.00



**156 Artwork**

Lot misc. artwork including prints,  
etchings etc. 25.00 - 50.00



**157 Painting Hudson River School**

Early 20th c. oil on canvas Hudson River  
School signed illegibly. Site 9 1/2" x 13".  
40.00 - 60.00



**158 19th c. Painting Signed A. Millrose**

19th c. oil on canvas sheep signed "A.  
Millrose". Site 11 1/2" x 17 1/2". 100.00 -  
150.00



**LOT #**

**159 Drawing Signed Jean Reasoner**

Drawing little girl "Margaret" signed and  
dated "Jean Reasoner April 28th, 1949".  
Site 15" x 12". 40.00 - 60.00



**160 Painting Sheep**

Painting oil on canvas sheep. Signed 15  
1/2" x 23 1/2". 50.00 - 100.00



**161 Framed Rug Fragments**

Lot 2 framed rug fragments. 25.00 - 50.00



**162 Painting Signed "S.E.P."**

Painting oil on canvas hunting dogs signed  
"S.E.P.". Site 17 1/2" x 24 1/2". 100.00 -  
150.00



**163 Painting Signed Kermeth**

Painting oil on board estate signed "W.  
Kermeth". Site 16 1/2" x 24 1/2". 50.00 -  
75.00



**164 19th c. Empire Clock**

19th c. Ct. "Birge, Mallory & Co.", Empire  
mahogany clock. Some minor veneer  
damage. 35" Ht. 75.00 - 125.00



**165 19th c. Crown Of Thorns Frame**

19th c. Crown Of Thorns frame. 25" x 16  
1/2". 200.00 - 300.00



October 22 2011, Cataloged Estate Auction 10/22/2011

**LOT #**

**166 19th c. Stoneware Decorated Crock**  
19th c. stoneware bird decorated "N.A. White & Son, Utica N.Y." 4 gallon crock. 11" Ht. 175.00 - 225.00



**167 Trade Sign**  
19th c. trade sign "WAITING ROOM". 28" x 4". 50.00 - 75.00



**168 19th c. Empire Clock**  
19th c. Ansonia Ogee clock. 25 1/2" Ht. 50.00 - 75.00



**169 19th c. Mellon Crate**  
19th c. shoe foot melon crate in old paint. 34" W 20" D 28" Ht. 100.00 - 150.00



**170 19th c. Chest Drawers**  
19th c. chest drawers with heart cutout on splash. 38" W 17 1/2" D 47" Ht. 200.00 - 300.00



**171 19th c. Doors**  
Lot 2 19th c. New England interior doors with original hardware. 24" x 72" and 27 1/4" x 66". 75.00 - 125.00



**172 19th c. Tall Post Bed**  
19th c. New England figured maple tall post bed. Missing rails and canopy. 46" W 65" Ht. 100.00 - 150.00



**LOT #**

**173 19th c. Folding Bucket Bench**  
19th c. folding bucket bench in old blue paint. 48" Length. 50.00 - 75.00



**174 19th c. Watch Hutch**  
19th c. plaster watch hutch with wax Kresh. 14" Ht. 100.00 - 150.00



**175 19th c. Flip Glass**  
19th c. Continental flip glass. 8" Ht. 75.00 - 125.00



**176 Pine Corner Cupboard**  
Scrubbed pine corner cupboard having 2 glass doors over 2 drawers over 2 doors. 4' W 25" D 74" Ht. 200.00 - 300.00



**177 19th c. Knife Box**  
19th c. dovetailed knife box in old paint. 13 1/2" W. 200.00 - 300.00



**178 19th c. Shelf Clock**  
19th c. Shelf clock with reverse painted tablet. 19" Ht. 40.00 - 60.00



**179 19th c. Shelf Clock**  
19th c. shelf clock. 17" Ht. 40.00 - 60.00



**180 Clock Lot**  
Lot 2 19th c. oak wall clocks. 9" and 16" Diameter. 40.00 - 60.00





October 22 2011, Cataloged Estate Auction 10/22/2011

**LOT #**

**181 19th c. Wall Clock**

19th c. wall clock with Jenny Lind head decoration. 24" Ht. 40.00 - 60.00



**182 19th c. Empire Clock**

19th c. Ct. "E.N. Welch" clock with reverse painting of a sailor. 32 1/2" Ht. 200.00 - 300.00



**183 Mirror**

Early decorative mirror. 17 1/2" x 13". 40.00 - 60.00



**184 Asian Lamp Lot**

Lot two Asian pottery lamps. 50.00 - 100.00



**185 Lamp Lot**

Lot 3 Asian pottery lamps. 50.00 - 75.00



**186 Wing Chair**

Upholstered Chippendale style wing chair. 21" Seat Ht. 41" Overall Ht. 50.00 - 100.00



**187 Eel Spear**

Early eel spear. 32" Ht. 100.00 - 150.00



**188 Painting Signed Frank Moser**

Painting oil on artist board signed "Frank Moser" (Frank Moser New York/Kansas 1886-1964), back signed and titled, "Bit-N-Spur Farm Painted Oct. 1943". Has artist estate stamp on back. Site 12" x 16". 200.00 - 400.00



**LOT #**

**189 Paintings Signed Frank Ellerby**

Lot two abstract paintings signed and dated "Frank Ellerby 1974". Site 13 1/2" x 12 3/4". 50.00 - 100.00



**190 Vintage Carousel Horse**

Vintage "Mexico Force, Inc., Reedsville, Pa." metal carousel horse. 29" W 21 1/2" Ht. 100.00 - 150.00



**191 Pair Ethnic Masks**

Pair carved and painted ethnic masks. 10" Ht. 8" W. 50.00 - 75.00



**192 19th c. Dumbwaiter**

19th c. mahogany 2 tiered dumb waiter. 38 1/2" Ht. 75.00 - 125.00



**193 Lot 3 19th c. Document Boxes**

Lot 3 19th c. tack decorated document boxes. 100.00 - 150.00



**194 Violin Lot**

Lot 4 early Violins in cases. 150.00 - 250.00



**195 Stone Bust Of Caesar**

Early stone bust of Caesar. 23 3/4" Ht. 200.00 - 400.00



October 22 2011, Cataloged Estate Auction 10/22/2011

**LOT #**

**196 Early Candlestand**

Early candlestand. 37 3/4" Ht. 200.00 - 300.00



**197 Baseball Prints**

Lot misc. early baseball prints disbound from Harper's Weekly. 50.00 - 75.00



**198 Pair Bergere Chairs**

Pair upholstered Bergere chairs. 16" Seat Ht. 32" Overall Ht. 200.00 - 300.00



**199 19th c. Marquetry Chair**

19th c. marquetry armchair. 19" Seat Ht. 34" Overall Ht. 75.00 - 125.00



**200 Mirror**

19th c. silver gilt mirror. Site 26 1/2" x 43 1/2" Overall. 75.00 - 125.00



**200a Clock Keys**

Lot 15 clock keys. 50.00 - 75.00



**201 Outsider Art Painting**

Outsider art oil on canvas trial of Jesus. In nice carved oak frame. Site 31" x 23 1/2". 150.00 - 250.00



**202 Painting Signed Turner**

19th c. oil on board house signed "Turner". Site 10 1/2" x 13 1/2". 75.00 - 125.00



**LOT #**

**203 19th c. Painting Chicks**

19th c. oil on canvas chicks eating. Site 12" x 10". 50.00 - 100.00



**204 Spanish Colonial Painting**

Painting oil on canvas Spanish Colonial religious subject. Unframed. Site 31 1/2" x 20". 200.00 - 300.00



**205 18th c. Armchair**

18th c. ladderback rush seat armchair. 16" Seat Ht. 46" Overall Ht. 100.00 - 150.00



**206 19th c. Pewter Lot**

Lot 3 pcs. early pewter including 9 1/2" plate signed "Richards", 8 1/2" plate signed "J. Danforth" and 13" plate. 50.00 - 100.00



**207 Terra Cotta Bust**

19th c. terra cotta bust signed "La Lanne", 13" Ht. 75.00 - 125.00



**208 Art Nouveau Vase**

Early painted Art Nouveau ceramic vase. 19" Ht. 50.00 - 75.00



**209 Oriental Rug**

Kilim Oriental rug. 5' x 9' 8". 100.00 - 150.00



October 22 2011, Cataloged Estate Auction 10/22/2011

**LOT #**

**210 Oriental Rug**

Teke Oriental rug. 6' 10" x 10' 8". 100.00 - 150.00



**210a Lot 200 Keys**

Lot over 200 early and vintage keys. 200.00 - 250.00



**211 Oriental Rug**

Oriental rug. 8' x 11' 2". 100.00 - 150.00



**211a Movie Star Photos**

Lot 7 oversized movie star candid photos including Debbie Reynolds, James Cagney, John Wayne, Mickey Rooney and more. 50.00 - 100.00



**212 Oriental Rug**

Oriental rug. 7' 11" x 11'. 100.00 - 150.00



**212a Toby Mugs**

Lot 10 vintage Toby Mugs. 50.00 - 75.00



**213 19th c. Continental Settee**

19th c. Continental settee with carved horses on tops of legs. 55" W. 150.00 - 250.00



**213a Misc. Lot**

Misc. lot including fraternal hat pins, Chinese candle box, compass sets etc. 75.00 - 125.00



**LOT #**

**214 Victorian Table**

19th c. Victorian oval top table. Top 30" x 20", 29" Ht. 75.00 - 125.00



**214a Lot Autographed Baseballs**

Lot 10 autographed baseballs including Puckett, Ripken, Piazza, Clements, Yount, Griffey Jr., Murray, Johnson, Smith and Bonds. 500.00 - 700.00



**215 Pair Moderne Chairs**

Pair upholstered cube chairs on swivel bases. 18" Seat Ht. 28" Overall Ht. 200.00 - 300.00



**216 Saddle Bag**

Persian saddle bag. 40.00 - 60.00



**217 Persian Pillows**

Lot 4 Persian pillows. 40.00 - 60.00



**218 Cottage Pine Stand**

19th c. cottage pine stand. Top 26" x 18 1/2", 29" Ht. 40.00 - 60.00



**219 Fireplace Crane**

Fireplace crane decorated with stars. 65" W. 75.00 - 125.00



October 22 2011, Cataloged Estate Auction 10/22/2011

**LOT #**

**220 Salesman Sample Sugaring Outfit**  
Early tin salesman sample sugaring outfit.  
50.00 - 100.00



**221 19th c. Map New York City**  
19th c. "Map Of New York And Its Vicinity, New York 1863". Published by S.D. Tildern. 63 1/2" x 63 1/2". Some damage. 100.00 - 150.00



**222 Frame**  
Vintage frame. Takes 20 1/2" x 30 1/2" picture. 50.00 - 75.00



**223 Oriental Rug**  
Oriental rug. 8' 7" x 12'. 100.00 - 150.00



**224 Frame**  
19th c. silver gilt frame. Takes a 13" x 26 1/2" picture. 50.00 - 75.00



**225 Patriotic Needlework**  
Early patriotic needlework "In Remembrance Of My Voyage To The Philippines, China. & Japan, U.S. A.T. Thoms". Site 19 1/2" x 21". 50.00 - 100.00



**226 Ingersoll Mickey Mouse Watch**  
Ingersoll Mickey Mouse watch in its original case. 75.00 - 125.00



**LOT #**

**227 Cast Iron Tractor Toy**  
Early cast iron tractor toy in old red paint. 5 3/4" Length. 75.00 - 125.00



**228 Bronze Elephant Candlesticks**  
Pair Victorian elephant bronze candlesticks. 12 1/2" Ht. 75.00 - 125.00



**229 Folk Art Erotica Box**  
19th c. wooden folk art box that opens to reveal man. 5 1/2" Length 50.00 - 75.00



**230 Native American Basket**  
Small Native American coil basket. 3" Diameter. 40.00 - 60.00



**231 19th c. Sea Chest**  
19th c. sea chest in old red paint. 30" W 14" D 14" Ht. 75.00 - 125.00



**232 Mid Century Baumritter Armchair**  
Mid Century "Baumritter" armchair. Needs cushion. 13" Seat Ht. 39" Overall Ht. 50.00 - 75.00



**233 19th c. Copper Lined Sink**  
19th c. copper lined double sink. 48" W. 100.00 - 150.00



October 22 2011, Cataloged Estate Auction 10/22/2011

**LOT #**

**234 Whale Vertebra**  
Whale vertebra. 29" x 20". 150.00 - 250.00



**235 Arne Jobenson Office Chair**  
Mid Century Arne Jobenson for Fritz Hansen office chair. 20" Seat Ht. 34" Overall Ht. 50.00 - 100.00



**236 Fish Sign**  
Vintage fish shaped sign "N.Y.S. Fish Hatchery 2 Mi.", 30" W. 50.00 - 75.00



**237 Woodblock Print Julius Von Ehren**  
Woodblock print ducks signed "Julius Von Ehren". Site 10" x 13". 50.00 - 75.00



**238 Modernist Bell**  
Modernist pottery bell. 25.00 - 50.00



**239 Camp Blanket**  
Vintage camp blanket. 50.00 - 75.00



**240 Modern Design Tray Table**  
Modern design tray table. 19" Ht. 50.00 - 75.00

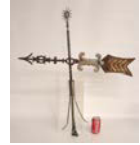


**241 Modern Design Table**  
Modern design Lucite table. 24" W. 50.00 - 75.00



**LOT #**

**242 Lightning Rod**  
Early Electra Co. lightning rod. 32" x 36". 100.00 - 150.00



**243 Knoll Table**  
Enamel top table. Richard Schultz for Knoll. Top 28" x 28", 16" Ht. 50.00 - 100.00



**244 19th c. Painting Signed "W. Bryning"**  
19th c. oil on canvas landscape with man signed "W. Bryning". Site 8 1/4" x 6 1/2". 100.00 - 150.00



**245 Watercolor Signed "SW Souther"**  
Watercolor on paper village scene signed "SW Souther". Site 14" x 10". 40.00 - 60.00



**246 Painting Continental Street Scene**  
Painting oil on artist board Continental street scene signed illegibly. Site 17" x 11". 50.00 - 75.00



**247 19th c. Continental Painting**  
19th c. oil on canvas Continental village scene. Signed illegibly. Site 15 1/2" x 23 1/2". 100.00 - 150.00



**248 Watercolor Signed CED Rushford**  
Watercolor skating scene signed "CED Rushford". Site 14" x 21". 50.00 - 75.00





October 22 2011, Cataloged Estate Auction 10/22/2011

**LOT #**

**249 19th c. Landscape Painting**

19th c. oil on canvas landscape. Unsigned. As found. Site 15" x 25". 40.00 - 60.00



**250 Bowl Signed Tim Turner**

Glass bowl signed and dated "Tim Turner 1972". 10 1/2" Diameter. 40.00 - 60.00



**251 Top Hat Bowl**

Top hat bowl. 7" Ht. 40.00 - 60.00



**252 19th c. Tack Trunk**

19th c. tack trunk. 16" W. 50.00 - 75.00



**253 Painting Indian On Board**

Painting Indian on board. 10" x 65 1/2". 50.00 - 100.00



**254 19th c. Painting Church**

19th c. oil on canvas painting of a church. Site 14 1/4" x 19 1/2". 50.00 - 100.00



**255 19th c. Painting Ship Wreck**

19th c. oil on canvas ship wreck signed "E.M.G. 1893". Site 10" x 30 1/2". 50.00 - 100.00



**256 19th c. Painting Dog**

19th c. oil on artist board dog with cane in its mouth. Site 21 3/4" x 18". 50.00 - 75.00



**LOT #**

**257 Roseville Bowl**

Early Roseville "Baneda" bowl with paper label. 6" Ht. 40.00 - 60.00



**258 19th c. Writing Box**

19th c. Victorian rosewood writing box. 40.00 - 60.00



**259 Asian Ceramics**

Lot 6 pcs. various Asian ceramics including Canton ginger jar etc. Imperfections. 50.00 - 100.00



**260 Asian Ceramics**

Lot 4 pcs. Rose Medallion including reticulated dish. Imperfections. 50.00 - 100.00



**261 Parian Lot**

Lot including 19th c. 13 1/2" Parian figure boy and 9 1/2" porcelain figure woman with birds. 50.00 - 100.00



**262 19th c. Painted Cigar Case**

19th c. hand painted cigar case. 5 1/2" Length. 50.00 - 100.00



**263 19th c. Royal Vienna Dish**

19th c. Royal Vienna (?) painted covered dish. 8" Diamter 3 1/2" Ht. 50.00 - 100.00



October 22 2011, Cataloged Estate Auction 10/22/2011

**LOT #**

**264 Porcelain Wall Shelf**

Early porcelain wall shelf nude seated woman. 10 1/2" Ht. 50.00 - 100.00



**265 19th c. Continental School Painting**

19th c. oil on canvas Continental school with castle in background. Site 22" x 30". Some damage. Frame damaged. 300.00 - 400.00



**266 Globe**

1950' s globe "Heirloom Globe By Replogle". 30" Ht. 40.00 - 60.00



**267 Japanese Woodblock Print**

Japanese 3 panel woodblock print. Site 15" x 29 1/2". 100.00 - 150.00



**268 Sword Lot**

Lot including early bone handled sword cane, 34" Length. Along with a 34" sword with eagle on base of handle. 50.00 - 75.00



**269 Painting Wee Hauken New Jersey**

19th c. oil on canvas labeled on verso "Mountain House Wee Hauken New Jersey". Site 9" x 12". 50.00 - 100.00



**270 Continental Stain Glass Panel**

Early Continental stain glass round panel. 13" Diameter. 40.00 - 60.00



**LOT #**

**271 Continental School Painting**

Early oil on canvas Continental School landscape with spire in background. Site 11 1/2" x 9 1/2". 50.00 - 100.00



**272 Painting Continental School**

19th c. oil on panel Continental scene with bridge and cows. Site 7 1/2" x 9 1/2". 50.00 - 100.00



**273 Painting Still Life**

19th c. oil on canvas painting still life with pines. Site 8 1/2" x 12". Some damage. 40.00 - 60.00



**274 Meissen Lamp**

Meissen lamp. 14 1/2" Overall Ht. 100.00 - 200.00



**275 Vanderbilt Cup Trophy**

1960 Vanderbilt Cup Race silverplate trophy. 11 3/4" Ht. 40.00 - 60.00



**276 Flower Pots**

Large collection various vintage ceramic flower pots. Imperfections. 25.00 - 50.00



**277 Leetac Radio**

Contemporary Leetac record player/am fm radio/cd player. 25.00 - 50.00



October 22 2011, Cataloged Estate Auction 10/22/2011

**LOT #**

**278 Primitive Lot**

Primitive lot including 2 bake boards and early dust broom. 40.00 - 60.00



**279 19th c. Buggy Seat**

19th c. buggy seat. 40" W. 50.00 - 100.00



**280 Victorian Hook Rack**

19th c. Victorian oak hook rack. 34" W. 40.00 - 60.00



**281 Linen Lot**

Lot early linens including cutwork, drawn work, damask, cotton etc. 25.00 - 50.00



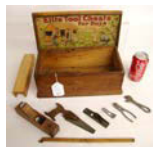
**282 19th c. China**

Lot misc. 19th c. flow blue ironstone including plates, platter, cups, Lusterware etc.. Imperfections. 25.00 - 50.00



**283 Child's Tool Chest**

Early "Elite Tool Chests For Boys", with partial contents. 40.00 - 60.00



**284 Prayer Rug**

Prayer rug. 25.00 - 35.00



**285 19th c. Stoneware Crock**

19th c. stoneware decorated crock. 10 1/2" Ht. 50.00 - 75.00



**LOT #**

**286 Shaving Mirror**

1920' s shaving mirror. 27 3/4" Ht. 25.00 - 50.00



**287 Victorian Frames**

Pair matching 19th c. Victorian high quality frames with photos. 14 1/2" x 16 1/4" Overall. 50.00 - 100.00



**288 Victorian Frames**

Pair 19th c. ebonised Victorian frames. 7 1/4" x 12" Overall. 40.00 - 60.00



**289 Victorian Frames**

Lot 2 19th c. Victorian frames with photos. 50.00 - 100.00



**290 Singer Sewing Machine**

Contemporary working Singer sewing machine. 25.00 - 50.00



**291 19th c. Tole Trays**

Lot 3 19th c. hand painted tole trays. 25.00 - 50.00



**292 Metalware Lot**

Lot including brass dish and 2 copper pots. 50.00 - 75.00



October 22 2011, Cataloged Estate Auction 10/22/2011

**LOT #**

**293 Metalware Lot**

Lot 4 early metal teapots, Dixon pewter sugar bowl, pans and lighting devices. 25.00 - 50.00



**294 Desk Items**

Lot misc. cross pens in boxes, letter opener etc. 10.00 - 20.00



**295 19th c. Dryer**

19th c. wall mount dryer. 25.00 - 50.00



**296 Book Lot**

Lot antique reference books and misc. books. 10.00 - 20.00



**297 Barometers**

Lot misc. contemporary barometers (one vintage signed Waltham). 25.00 - 50.00



**298 Toy Lot**

Lot misc. vintage and early toys including "Eagle" toy stove, tractors, soldiers, truck etc. 50.00 - 100.00



**299 Train Lot**

Lot misc. vintage train accessories including lights, billboards, tower etc. 50.00 - 100.00



**LOT #**

**300 Toby Mugs**

Lot 2 vintage Toby mugs. 1 1/4" and 3" Ht. 25.00 - 35.00



**301 Pewter Lot**

Lot 5 pcs. 19th and 20th c. pewter. 40.00 - 60.00



**302 Bradley & Hubbard Lamp Base**

Signed Bradley & Hubbard lamp base. 23" Ht. 40.00 - 60.00



**303 19th c. Center Bowl**

19th c. Victorian painted center bowl. 18" W. 40.00 - 60.00



**304 Bronze Patina Statue**

Early 20th c. bronze patina "Don Ceasar" sculpture. 20" Ht. 50.00 - 75.00



**305 Wedgwood Tea Set**

Wedgwood 3 pc. tea set. Imperfections. 25.00 - 35.00



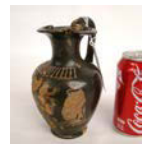
**306 Set Of Rose Bowls**

Set of 4 rose bowls (one peach blow). 25.00 - 50.00



**307 Early Greek Pitcher**

Early Greek pitcher. Imperfections. 6 1/2" Ht. 40.00 - 60.00



October 22 2011, Cataloged Estate Auction 10/22/2011

**LOT #**

**308 Vintage Scotty Dog Figurine**

Vintage "Smarty Shafford" figurine. 14" Length. 25.00 - 50.00



**309 Asian Bronze Bowl**

Early Asian bronze bowl. 15" Diameter 13" Ht. 100.00 - 150.00



**310 Metalware Lot**

Lot misc. metal plant holders, hardware etc. 40.00 - 60.00



**311 French Knives**

Set of "Pigault Paris" ivory handled knives in original case. 25.00 - 50.00



**312 18th c. Wagon Seat**

18th c. Dutchess County wagon seat. 37" W. 150.00 - 250.00



**313 18th c. Side Chair**

18th c. Queen Anne side chair in black paint with carved ears. 18" Seat Ht. 41" Overall Ht. 75.00 - 125.00



**314 Chinese Armchair**

Chinese armchair. 18" Seat Ht. 34" Overall Ht. 75.00 - 125.00



**LOT #**

**315 19th c. Belter Chair**

19th c. Belter "Rosalie" side chair. 16" Seat Ht. 36" Overall Ht. 300.00 - 500.00



**316 19th c. Belter Chair**

19th c. Belter (?) chair. Some losses. 17" Seat Ht. 39 1/2" Overall Ht. 100.00 - 200.00



**317 Asian Porcelains**

Lot approx. 20 Asian porcelains including pr. Ginger jars, vase etc., imperfections. 50.00 - 100.00



**318 Misc. Lot**

Misc. lot including apertif set in hand painted egg, pair butterfly painted vases (chipped), whippet sculpture and deco chrome vase. 40.00 - 60.00



**319 19th c. Majolica Bust Woman**

19th c. majolica bust woman on pedestal. Bust 21" Ht., pedestal 9" Ht. 200.00 - 400.00



**320 19th c. Victorian Firescreen**

19th c. Victorian Aesthetic Movement mirrored and stained glass firescreen. 43" W 44 1/2" Ht. 300.00 - 500.00



**321 Japanese Woodblock Print**

Three part Japanese woodblock print. Site 14" x 28 1/2". 100.00 - 150.00





October 22 2011, Cataloged Estate Auction 10/22/2011

**LOT #**

**322 Miniature Candlesticks**

Lot 8 various miniature candlesticks. 40.00 - 60.00



**323 Bisque/Porcelain Lot**

Lot 7 misc. early bisque/porcelain figurines including African American musician grouping, soldier drummer, classical figure etc., imperfections. 50.00 - 100.00



**324 Sterling Silver Lot**

Lot misc. .800 and sterling. Approx. 750 grams. Weighted candlestick not included in lot. 600.00 - 700.00



**325 Candlestick Lot**

Lot 11 various early candlesticks. 40.00 - 60.00



**326 Parian Lot**

Lot 8 early various Parian items including hand vases etc., imperfections. 50.00 - 75.00



**327 Candlesticks**

Pair fancy brass candlesticks. 6 1/4" Ht. 50.00 - 100.00



**328 Wedgwood Lot**

Large lot over 40 pcs. misc. Wedgwood (and Wedgwood type), including pitchers, covered boxes, biscuit barrel etc. 50.00 - 100.00



**LOT #**

**329 Photo Lot**

Lot 3 early cased photos and album. 40.00 - 60.00



**330 Meissen Parrot**

Meissen parrot. 14" Ht., imperfections. 50.00 - 100.00



**331 Staffordshire Lot**

Lot 3 19th c. Staffordshire figures. Includes 14" woman, 12 1/2" man/woman grouping and 12" man/woman grouping. Imperfections. 50.00 - 100.00



**332 Lighting Lot**

Lot misc. oil lamps and chase design brass lamps, vaporizer in orig. box etc. 50.00 - 100.00



**333 Early Joint Stool**

Early Joint stool. Top 16" x 11", 21 1/2" Ht. 100.00 - 150.00



**334 Kresh Lot**

Lot over 40 pottery Kresh figures. Imperfections. 25.00 - 50.00



**335 Carving Lot**

Lot 6 various figures including 14 3/4" early wooden polychrome painted figure, 12" seated polychrome painted figure, 3 smaller early wooden figures and plaster figure of Jesus. 100.00 - 150.00



October 22 2011, Cataloged Estate Auction 10/22/2011

**LOT #**

**336 Wing Chair**

Vintage wing chair with ottoman. 17" Seat Ht. 38" Overall Ht. 50.00 - 75.00



**337 19th c. Federal Mirror**

19th c. gilt Federal mirror. 27 1/2" x 15". 50.00 - 100.00



**338 19th c. Mirror**

19th c. mirror. 24" x 28 1/2". 40.00 - 60.00



**339 Iron Bench**

Iron bench in white paint. 43 1/2" W. 50.00 - 75.00



**340 Shelf**

Inlaid shelf stamped "Italy". 32" Ht. 50.00 - 75.00



**341 Brass Mirror/Cabinet**

Victorian brass mirrored wall cabinet. 18 1/2" x 24". 100.00 - 150.00



**342 Victorian Folding Shelf**

19th c. Victorian folding wall shelf. 25.00 - 50.00



**343 Bronze Neo-Classical Plate**

Bronze Neo-Classical plate. 10" Diameter. 40.00 - 60.00



**LOT #**

**344 Majolica Bowls**

Pair Majolica rose bowls. 4" Diameter 4" Ht. 40.00 - 60.00



**345 Wine Pitcher**

Vintage wine pitcher. 9" Ht. 25.00 - 50.00



**346 Netsuke Lot**

Lot 10 Netsuke's. Elephant has imperfections. Along with 2 bases. 100.00 - 150.00



**347 French Style Table**

French style refractory table. Top 43 1/2" x 67 1/2" with sliding leaves, 30" Ht. 100.00 - 150.00



**348 Asian Plant Table**

Asian marble top plant table. 18" Ht. 50.00 - 75.00



**349 Book Press**

Cast iron book press. 20" W 13 1/2" Ht. 50.00 - 75.00



**350 French Server**

French marble top glass door server. 39" W 17 3/4" D 36" Ht. 250.00 - 450.00



October 22 2011, Cataloged Estate Auction 10/22/2011

**LOT #**

**351 French Style Hall Table**

French style hall table. Top 16" x 72", 31" Ht. 100.00 - 150.00



**352 Reverse Thumbprint Pitcher**

Early reverse thumbprint pitcher. 9" Ht. 50.00 - 75.00



**353 Log Holder**

Log holder. 25.00 - 50.00



**354 Metalware Lot**

19th c. metalware lot 4 cooking utensils. 75.00 - 125.00



**355 19th c. Charcoal Drawing**

19th c. unframed charcoal drawing man and dog. 29" x 40". 50.00 - 75.00



**356 Samovar Lamp**

Early brass Samovar converted to lamp. 25" Ht. 50.00 - 75.00



**357 Metalware**

Lot including early footed pot and lidded kettle marked "'M & S 4 QT.". 50.00 - 100.00



**358 19th c. Footstool**

19th c. Penna. footstool. 14" W. 75.00 - 125.00



**LOT #**

**359 Rockingham Glaze Dish**

19th c. Rockingham glaze dish. Imperfections. 10" W 6 1/2" Ht. 50.00 - 75.00



**360 Advertising Box**

19th c. "Chas. S. Higgins Ornamental Brooklyn N.Y." box. 5 1/2" W. 25.00 - 35.00



**361 Rockingham Glaze Bowls**

Lot 3 19th c. Rockingham glaze bowls. Imperfections. 50.00 - 75.00



**362 Painting Still Life**

Painting oil on canvas still life. As found. Has label on back "VanCline And Davenport.....New York City". Site 12" x 8". 50.00 - 75.00



**363 19th c. Graphite Drawing**

19th c. graphite drawing Continental Scene with castle. Site 13" x 11". Staining. 40.00 - 60.00



**364 19th c. Painting Landscape**

19th c. oil on artist board landscape. Site 10 1/2" x 18 1/4". 150.00 - 250.00



**365 Painting N.Y.C.**

C. 1950's painting oil on artist board N.Y.C. Central Park West. Site 16" x 20". 40.00 - 60.00



October 22 2011, Cataloged Estate Auction 10/22/2011

**LOT #**

**LOT #**

**366 Painting Signed Nettie Danzer**

Painting oil on artist board poker game gone bad signed and dated 'Nettie Danzer 1963". Site 12" x 16". 50.00 - 75.00



**373 Magic Lantern Lot**

Lot including early magic lantern and stereo viewer. 40.00 - 60.00



**367 Book Of Japanese Woodblock Prints**

Japanese book of woodblock prints. Book contains 11 prints. 9 1/2" x 12 3/4". Some damage. 50.00 - 75.00



**374 Chelsea China**

Approx. 25 pcs. as is Chelsea pattern china. 10.00 - 20.00



**368 Textile Lot**

Textile lot including Continental needlework and early paisley. Some damage. 50.00 - 75.00



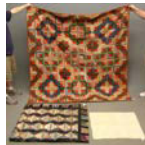
**375 Grosvenor China**

60 pcs. as is Grosvenor china. 25.00 - 50.00



**369 Textile Lot**

Early quilt lot including 4 patch crib, two log cabins. Some damage. 25.00 - 50.00



**376 Maddock & Son's China**

Approx. 50 pcs. as is Maddock & Sons china. 25.00 - 50.00



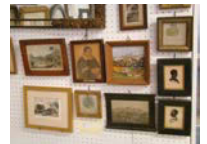
**370 Candleabra**

Silverplate 4 arm candleabra. 19 1/2" Ht. 40.00 - 60.00



**377 Frame Lot**

Lot 14 frames and various artwork including vintage silhouettes, Wallace Nutting, early Bartlett etc. 75.00 - 125.00



**371 19th c. Coverlet**

19th c. tri-color coverlet with birds, deer and buildings. Damage to center. 40.00 - 60.00



**378 Decorative Mirror**

1930's decorative mirror. 50 3/4" x 38 3/4". 50.00 - 100.00



**372 Marble Column**

19th c. marble column. 39" Ht. 50.00 - 75.00



**379 Lot**

Lot including glass dome and unusual glass stand. 50.00 - 75.00



October 22 2011, Cataloged Estate Auction 10/22/2011

**LOT #**

**380 19th c. Ogee Clock**

19th c. ogee clock. Labeled "Chauncy Jerome, New Haven Ct.". 30" Ht. 50.00 - 75.00



**381 Mantle Clock**

Contemporary mantle clock with reverse painted door. 27" Ht. 40.00 - 60.00



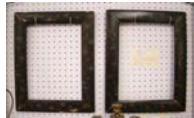
**382 Frame Lot**

Lot 12 various early and vintage frames. 40.00 - 60.00



**383 Asian Frames**

Pair early decorated Asian frames. Site 13 1/4" x 9 3/4". Frames 17 3/4" x 14 1/4". 40.00 - 60.00



**384 Vintage Frame**

Vintage frame. Site 29 1/2" x 34 1/4". Frame 37 1/2" x 42 1/2". Losses. 25.00 - 50.00



**385 Lamp Lot**

Lot 3 early lamps including figural oil and candelabra. 40.00 - 60.00



**386 Sconce Lot**

Lot six various sconces. 4 pairs 2 dissimilar. Note one pr. has goose heads. 40.00 - 60.00



**LOT #**

**387 Frame Lot**

Lot 2 vintage frames. Site 17 1/4" x 27 1/4", frame 21 1/4" x 27 1/4". The other site 15 1/2" x 19 1/2". Frame 22 1/2" x 27". 50.00 - 75.00



**388 19th c. Girandoles**

19th c. figural Girandoles. 16" Ht. 50.00 - 100.00



**389 Girandole Lot**

Lot 7 misc. 19th c. Girandoles. Some as found. 75.00 - 125.00



**390 Prisms**

Lot early prisms. 25.00 - 50.00



**391 19th c. Frame**

19th c. frame. Site 14 1/2" x 35 3/4". Frame 24" x 45". 50.00 - 75.00



**392 19th c. Ogee Mirror**

19th c. ogee mirror. 37 1/2" x 25 1/2". 50.00 - 75.00



**393 19th c. Mirror**

19th c. mirror. 44 3/4" x 28 3/4". 50.00 - 75.00





October 22 2011, Cataloged Estate Auction 10/22/2011

**LOT #**

**394 African Mask**

African carved wooden mask. 19" Ht.  
40.00 - 60.00



**395 19th c. Ogee Frame**

19th c. ogee frame. Some veneer damage.  
37 1/4" x 22 1/2". Top tablet has reverse  
painted eagle. 40.00 - 60.00



**396 Hanging Shelf Lot**

Lot 3 hanging shelves including Asian  
hand painted and two mahogany. 40.00 -  
60.00



**397 Boulette Lamp**

Bronze Boulette lamp. 20 1/2" Ht., has  
hand painted shade. 50.00 - 75.00



**398 Lamp Lot**

Lot 4 various decorative lamps. 40.00 -  
60.00



**399 Large Table Lot**

Large table lot over 100 pcs. including  
metronome, early teapots, vases, shades,  
Davenport plate, export dish with painted  
eagle, figural pitcher, papier mache tray (as  
found), flow blue dish, bronze owls etc.  
200.00 - 300.00



**400 Architectural Panel**

Architectural carved panel. 30" x 30".  
40.00 - 60.00



**LOT #**

**401 Brass Sconces**

Pair brass sconces marked "J. Co. Brass".  
12" Ht. 40.00 - 60.00



**402 Child's Mission Oak Desk**

Child's Mission oak desk. 40.00 - 60.00



**403 19th c. School Masters Desk**

19th c. School Masters desk. 26" W 31" D  
28" Ht. 50.00 - 100.00



**404 Crystal Chandelier**

Vintage Crystal 4 arm chandelier. As  
found. 50.00 - 75.00



**405 English China Lot**

Lot "English Scenery Wood Ware" china.  
Over 50 pcs. 25.00 - 50.00



**406 19th c. Shaving Mirror**

19th c. Empire mahogany two tired  
shaving mirror. Case rests on ball feet. 19  
3/4" W 10 1/2" D 35" Ht. 150.00 - 250.00



**407 Primitive Lot**

Early primitives lot including dough box,  
early footstool, pack basket, trap, dough  
bowl etc. 100.00 - 150.00



October 22 2011, Cataloged Estate Auction 10/22/2011

**LOT #**

**408 Card Table**

19th/20th c. inlaid card table. Top 36" x 18" (closed), 30" Ht. 50.00 - 100.00



**409 1860 Map Of Sussex New Jersey**

Signed and dated 1860 map of Sussex Co. New Jersey. Also signed "Actual Surveys & Records.....G.M. Hopkins...Carlos Allen MD Publisher Philadelphia 1860". 52" x 56". Damage top top. 100.00 - 150.00



**411 1852 New Map Of North American**

Signed and dated 1852 map "New Map Of That Portion Of North America, Exhibiting The United States And Territories, The Canadas, New Brunswick, Nova Scotia And Mexico, Also Central American And The West India Islands.....Published by Jacob Monk...1852". 62" x 57". 100.00 - 150.00



**412 Painting Signed A. Bocklin**

Painting fantasy subject with reclining nude woman signed "A. Bocklin" (Switzerland 1827-1901). Unframed. 10" x 26". 400.00 - 600.00



**413 Painting Pasaic Falls**

19th c. oil on canvas signed illegibly. Pencil signed verso "Pasaic Falls". Site 3" x 5". 50.00 - 100.00



**414 Painting Continental School**

Early Continental School interior scene. Unframed. 24" x 19". Some damage. 50.00 - 100.00



**LOT #**

**415 19th c. Painting Horses**

19th c. oil on artist board horses. Has Devoe Co. label on back. Frame damaged. Site 14 1/4" x 18 3/4". 25.00 - 50.00



**416 French Style Chest**

1920' s French style chest drawers. 36" W 20" D 46 1/2" Ht. 50.00 - 75.00



**417 Cupboard**

"Make Do" cupboard. 36" W 17" D 69" Ht. 50.00 - 75.00



**418 19th c. Ladder**

19th c. primitive ladder. 55" Ht. 25.00 - 50.00



**419 19th c. Side Table**

19th c. Victorian side table. Top 28" x 17", 29" Ht. 50.00 - 75.00



**420 Butterfly Table**

Labeled Lord & Taylor butterfly table. Some damage. 25.00 - 50.00



**421 Painting Woman Signed Jonas Lie**

Oil on canvas painting of a woman. Unframed. Signed "Jonas Lie 1908 " top right corner. Unframed. 29 3/4" x 21". 50.00 - 75.00



October 22 2011, Cataloged Estate Auction 10/22/2011

**LOT #**

**422 Misc. Lot**

Early misc. lot including bedwarmer, early tools, document box, "Millemann's Horse Radish" bottle, tazza, hooks, knife box, chambersticks, pewter spoon, snippers, early hooks etc. 150.00 - 250.00



**423 Paper/Ephemera Lot**

Lot misc. early books and literature, prints etc. including "Discourse Preached In Burlington....1811", Philadelphia Railroad 1852 pamphlet, "Reports And Estimates For A Ship Canal And Basin From Albany To New-Baltimore....1853", 1860's almanacs, 1827 almanac, "A Sketch of Life And Character of William Penn.....Phil. 1885", American Artist book with prints, Rolly Michaux poster, early etchings, "a happening with Salvador Dali" poster etc. 50.00 - 75.00



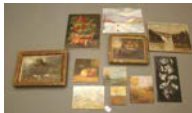
**424 Silhouettes**

Lot two early silhouettes including gentleman signed "C. Haynes", site 2 1/2" x 2" and gentleman, site 2" x 3". 150.00 - 250.00



**425 Painting Lot**

Lot misc. artwork including landscape signed Stephen Van Cline, still life signed illegibly, oil on panel flowers, early sheep painting (as found), landscape signed Riep ?, early still life with mountains in background (as found), still life signed Seidel ?, winter scene on artist board etc. 50.00 - 100.00



**LOT #**

**426 Parian Statue**

19th c. Parian statue classical figure next to building. 16 1/2" Ht. 100.00 - 150.00



**427 Marble Statue**

Early marble statue fragment classical boy. 14" Ht. 100.00 - 150.00



**428 Woodenware**

Lot early woodenware including treenware, gavel, figured maple book holder, early lighting device etc. 50.00 - 75.00



**429 Pattern Glass Lot**

Lot 17 pcs. early glassware including compote, pickle dish "Loves Request Is Pickles", General Grant dish, salts, knife rests etc. 50.00 - 75.00



**430 Toy Lot**

Toy lot including early building bank in original paint, 4 1/2" Ht., marbles etc. 50.00 - 75.00



**431 Glassware Lot**

Lot over 20 pcs. early glassware including "End Of Day" glass, pair vases, blue glass horn or plenty, pair Depression candlesticks, hobnail ruffled edge vase, Royal Copenhagen figures etc. 50.00 - 75.00



October 22 2011, Cataloged Estate Auction 10/22/2011

**LOT #**

**432 Misc. Lot**

Mis. lot including bronze letter holder, brass paperweight, statues, plaster mold Classical figure etc. 50.00 - 75.00



**433 Clear Glass Lot**

Lot 5 pcs. early clear glass including pair Sandwich 8 1/2" candlesticks, early oil lamp and 2 cut salts. 50.00 - 75.00



**434 Transferware Plates**

Lot 16 early transferware Historic and misc. plates. 50.00 - 75.00



**435 Brass Victorian Clock**

Brass Victorian Neo-Classical Seth Thomas clock. 15 1/4" Ht. 150.00 - 250.00



**436 Majolica Lot**

Lot 12 pcs. misc. early Majolica and misc. including pair shell vases, crab form flower frog (Japan), pitchers etc., imperfections. 50.00 - 75.00



**437 Staffordshire Lot**

Lot misc. early Staffordshire including couple under tree, figure on horseback, house, vases etc. Imperfections. 50.00 - 100.00



**438 Meakin Pitcher & Bowl**

19th c. "J. & G. Meakin Pagoda" pitcher and bowl. 50.00 - 100.00



**LOT #**

**439 Misc. Lot**

Misc. lot over 25 pcs. transferware, ironstone etc., includes platters, covered dishes, teapots etc., imperfections. 50.00 - 75.00



**440 19th c. Yellowware Covered Jar**

19th c. yellowware covered jar. Front is painted "Expressly made for William Drovers (?)". 6 1/2" Ht. 50.00 - 75.00



**441 Royal Doulton Lot**

Lot 2 pcs. Royal Doulton including 6 3/4" Witch theme pitcher and early boat theme plate. 50.00 - 75.00



**442 Chinese Export Jars**

Pair Chinese export covered jars. As found. 7 1/2" Ht. 40.00 - 60.00



**443 Marble Statue**

19th c. marble statue Angel and woman. As found. 11" W 8" Ht. 50.00 - 100.00



**444 Modern Design Chair**

Modern design chair. 16" Seat Ht. 37" Overall Ht. 50.00 - 100.00



**445 Modern Etagere**

Modern etagere. 61" Ht. 50.00 - 100.00



October 22 2011, Cataloged Estate Auction 10/22/2011

**LOT #**

**446 Modern Design Lamp**  
Modern design floor lamp. 62" Ht. 50.00 - 75.00



**447 Tole Tray**  
Vintage tole tray on stand. 10.00 - 20.00



**448 School Desk**  
C. 1910-20 oak school desk. Top 29" x 18 1/2", 30" Ht. 50.00 - 75.00



**449 19th c. Pembroke Table**  
19th c. Pembroke table with inlaid cuffs. Top is loose and needs screws. Top 16 1/2" x 36" with 10" Leaves, 29" Ht. 50.00 - 75.00



**450 19th c. Hall Mirror**  
19th c hall mirror. 27" x 62". 50.00 - 100.00



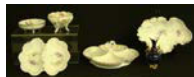
**451 Quilt/Comforter**  
C. 1940's quilt/comforter. 40.00 - 60.00



**452 Quilt Rack**  
Modern quilt rack. 2.00 - 2.00



**453 Limoges Lot**  
Lot 6 pcs. early china including Limoges. Pitcher has imperfection. 50.00 - 75.00



**LOT #**

**454 Art Glass Lot**  
Art glass lot including rose bowl with applied flowers, 3 pcs. end of day glass and 2 fairy lamps. 50.00 - 75.00



**455 Jewelry Lot**  
Lot misc. costume jewelry (along with jewelry boxes). 50.00 - 75.00



**456 Modern Design Chair**  
Modern design metal base upholstered chair. 25" Seat Ht. 51" Overall Ht. 50.00 - 100.00



**457 Wicker Stand**  
Contemporary wicker and metal single drawer table with undershelf. 28" Ht. 40.00 - 60.00



**458 19th c. Stand**  
19th c. pine single drawer stand. 29" Ht. 40.00 - 60.00



**459 Painting Still Life**  
Early still life. As found. Site 27 1/2" x 21 1/4". 25.00 - 35.00



**460 Painting Continental School**  
Early Continental school interior scene. As found. Site 22 1/2" x 17". 25.00 - 50.00





October 22 2011, Cataloged Estate Auction 10/22/2011

**LOT #**

**461 19th c. Card Table**

19th c. Empire mahogany card table. Top 38" x 19" (closed), 28 1/2" Ht., some losses. 100.00 - 150.00



**462 Early Painting Boy**

Old Master painting of a boy. As found. Frame as found. Site 27 1/2" x 22 1/2". 50.00 - 100.00



**463 19th c. Wash Stick**

19th c. wooden wash stick in old red wash. 25.00 - 35.00



**464 Swedish Argenta Dish**

Swedish Argenta dish. 6 1/2" Diameter. 25.00 - 35.00



**465 19th c. Victorian Ebonized Cabinet**

19th c. Victorian Aesthetic ebonized cabinet with painted doors and mirrored backslash. 29" W 17 1/2" D 54" Ht. 250.00 - 350.00



**466 Campfire Girls Indian Figure**

Vintage "Campfire Girls Of America" Indian figure. 7 1/2" Ht. 50.00 - 75.00



**467 Primitive Lot**

Primitive lot including herb basket, 19th c. soapstone, early wood tool and pickle jar. 40.00 - 60.00



**LOT #**

**468 19th c. Butter Molds**

Lot 2 19th c. butter molds. 75.00 - 125.00



**469 19th c. Hogscraper Candlesticks**

Lot 2 19th c. hogscraper candlesticks. 5 1/4" and 6 3/4" Ht. 75.00 - 125.00



**470 Continental Chest**

Continental lingerie chest. 21" W 14 1/2" D 40" Ht. 75.00 - 125.00



**471 Etagere**

1950's etagere. 43" Ht. 40.00 - 60.00



**472 Early Chair Lot**

Lot 3 18th/19th c. side chairs. 50.00 - 75.00



**473 Stool Lot**

Lot 3 early Curule type stools. As found. 25.00 - 35.00



**474 Folding Stool**

Vintage folding metal stool. 40.00 - 60.00



**475 19th c. Card Table**

19th c. Continental single drawer card table. Top 35" x 15 1/2", 31" Ht. 200.00 - 300.00



October 22 2011, Cataloged Estate Auction 10/22/2011

**LOT #**

**476 Plant Table**

Victorian plant table. 10.00 - 20.00



**477 Continental Table**

19th c. Continental single drawer table. 27" W 16 1/4" D 32 3/4" Ht. 50.00 - 100.00



**478 Victorian Chairs**

Lot 3 19th c. Victorian chairs. 25.00 - 50.00



**479 Early Phone**

Early wall phone. 10.00 - 20.00



**480 Set Of 6 Victorian Chairs**

Set of 6 19th c. Victorian cane seat chairs. 50.00 - 100.00



**481 Pair 19th c. Victorian Chairs**

Pair 19th c. Victorian chairs. As found. 25.00 - 50.00



**482 19th c. Table**

19th c. farm table. Top 48 1/2" x 24 1/2", 29 1/2" Ht. 50.00 - 100.00



**483 Russian Imperial Seal**

Early Russian "Imperial Seal" of Nicholai III Czar of all The Russias. Site 8 3/4" x 6". 50.00 - 75.00



**LOT #**

**484 Artwork Lot**

Lot 4 pcs. artwork including 19th c. Engraving "Ministere De La Marine", site 18 1/2" x 12 1/2", 19th c. engraving "Passerelle Du Pont Change Apres L' Incendie De 1621", site 5" x 9 1/4", 2 prints as found pencil signed "AA Blum" prints. 40.00 - 60.00



**485 19th c. Hudson River School Painting**

19th c. oil on canvas Hudson River School. Site 7 1/2" x 11 1/2". 100.00 - 150.00



**486 Copy Of Winslow Homer**

Painting copy of a Winslow Homer. Has Stephen Lord Van Cline label on verso. Site 11" x 15". 100.00 - 150.00



**487 Victorian Print**

19th c. framed Victorian print Continental scene. Site 28" x 17". Frame has some damage. 50.00 - 75.00



**488 19th c. Continental School Painting**

19th c. oil on canvas Continental School painting woman sewing near fireplace. Unframed. 16" x 20". 150.00 - 250.00



**489 19th c. Continental School Painting**

19th c. oil on canvas Continental School painting skating scene. Some damage. 25" x 30 1/4". 100.00 - 150.00



October 22 2011, Cataloged Estate Auction 10/22/2011

**LOT #**

**490 Book: "The Pilgrims Songster"**

Dated 1853 book "The Pilgrims Songster".  
25.00 - 35.00



**491 Lot**

Lot including printing block "Anniversary Dinner Saint Nicholas Society Of The City Of New York Dec 6 1909" and Lincoln print, back reads "Thirtieth Lincoln Dinner Of The Republican Club Of The City Of New York February 12th, 1916, Waldorf Astoria" (4" x 5 1/4"). 25.00 - 35.00



**492 Book Lot**

Book lot including: "The Passing Show" (Drawings By A.B. Wenzell), "Cornell University 1865" and "Ornaments of History". 25.00 - 35.00



**493 Vanity Screen**

Vintage painted 4 part vanity screen. Each section 21" x 72". 50.00 - 100.00



**494 Painting Signed "Johnson"**

Painting oil on canvas barns signed "Johnson". Unframed. 24" x 36". 100.00 - 150.00



**495 Painting Signed Erickson**

Painting pastel signed "Erickson N.Y. 1932". Site 21 1/2" x 27 1/2". 40.00 - 60.00



**LOT #**

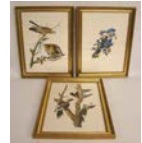
**496 Paintings Signed 'Reno'**

Lot 3 paintings signed "Reno". 40.00 - 60.00



**497 Bird Prints**

Lot 3 bird prints after Audubon. 25.00 - 35.00



**498 19th c. Sewing Table**

Rare form 19th c. sewing table with acanthus carved base with 3 small columns surrounding center column. As found condition. 50.00 - 75.00



**499 Chair Lot**

Lot including Chippendale style armchair and 19th c. Federal side chair. As found. 10.00 - 20.00



**500 18th c. Queen Anne Rocker**

18th c. Queen Anne rocker in black paint. 18 3/4" x 40". 50.00 - 100.00



**501 Mahogany Desk**

1920' s mahogany ball and claw foot desk. As found. 25.00 - 50.00



**502 19th c. Painting Woman**

19th c. watercolor painting standing woman. Site 27" x 18". 50.00 - 100.00



October 22 2011, Cataloged Estate Auction 10/22/2011

**LOT #**

**503 19th c. Etchings**

Lot 5 pcs. artwork including watercolor "Hadrian & Antinous", site 4 1/2" x 4", 19th c. etching signed "Daubigny", site 4 1/4" x 7", 19th c. Rembrandt etching, site 6 1/4" x 5", 19th c. etching signed "Daubigny", site 6 1/2" x 5", 19th c. etching by Paulus Potter, site 7 1/2" x 8 1/4". 50.00 - 100.00



**504 19th c. Engraving**

19th c. engraving "Principal Front In Oakland House in Chesire...", loose in frame. Site 10 1/2" x 26 1/2". 25.00 - 50.00



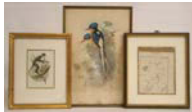
**505 Mortar And Pestle Shelves**

Lot including mortar and pestle shelf and pipe box. 40.00 - 60.00



**506 Artwork Lot**

Lot of 3 19th c. pcs. artwork including print "Cercopithecus Martini", site 7 1/2" x 5 1/2", 19th c. mushroom study print "St. 19th c. print "Tanysiptera Sylvia" (as found), site 20 1/2" x 13 1/2". 40.00 - 60.00



**507 Picasso Poster Book**

Lot including Picasso 1950's exhibition book filled with various posters and early book "Le Musee Arts Decoraties". 50.00 - 75.00



**508 Painting Still Life**

19th c. painting still life with flowers. Unframed. 16" x 12". 50.00 - 75.00



**LOT #**

**509 Pair 19th c. Portraits**

Pair 19th c. as found portraits in original as found frames. Site 27 1/4" x 21 1/2". 50.00 - 100.00



**510 Painting Continental School**

Continental School oil on masonite polo player signed illegibly. Site 7 1/2" x 9". 50.00 - 75.00



**511 Bronze Hagenauer (?) Figures**

Pair bronze Hagenauer (?) figures. 36" Ht. 50.00 - 100.00



**512 Candlestand**

1920' s pilgrim type candlestand. 38" Ht. 50.00 - 100.00



**513 19th c. Prints Cardinals**

Pair 19th c. Continental prints cardinals. Site 10 1/2" x 7 1/2". 50.00 - 75.00



**514 Pair Prints**

Pair decorative Continental prints. Site 11" x 9 1/2". 25.00 - 50.00



**515 Primitive Cabinet**

Primitive cabinet. As found. Along with a 19th c. 6 drw. table top cabinet. 25.00 - 35.00



October 22 2011, Cataloged Estate Auction 10/22/2011

**LOT #**

**516 Victorian Chair**

19th c. Victorian side chair. 17" Seat Ht.  
37" Overall Ht. 25.00 - 35.00



**517 Carved Armchair**

Centennial carved armchair with ball and  
claw feet. 18" Seat Ht. 39" Overall Ht.  
150.00 - 250.00



**518 Continental Chairs**

Pair Continental chairs. 19" Seat Ht. 37"  
Overall Ht. 50.00 - 100.00



**519 Mahogany Tables**

Lot 3 1950' s leather top mahogany tables.  
As found. 25.00 - 50.00



**520 Trade Sign**

Composition English trade sign. 39" x 30".  
Losses. 25.00 - 35.00



**521 Asian Jewelry Chest**

Asian jewelry chest along with and inlaid  
box. 25.00 - 35.00



**522 Rosewood Waste Basket**

1960' s rosewood waste basket. 17 1/2" Ht.  
25.00 - 35.00



**LOT #**

**523 Screen**

Two part screen. As found. 10.00 - 20.00



**524 Artwork**

Lot 3 pcs. artwork including print signed  
illegibly, etching "R.C.A" building and  
Paul Cadmus print. 25.00 - 35.00



**525 19th c. Candlestand**

19th c. inlaid top candlestand. As found.  
25.00 - 50.00



**526 Pair 19th c. Pot Cupboards**

Pair 19th c. columnar marble top pot  
cupboards. As found. 28" and 31" Ht.  
50.00 - 100.00



**527 19th c. Chest Drawers**

19th c. chest drawers. 43" W 23" D 44 1/2"  
Ht. 100.00 - 150.00



**528 19th c. Painting Washington's Home**

19th c. oil on canvas Washington's  
residence in Newburgh. Site 13 1/2" x 21  
1/2". 150.00 - 250.00



**529 Continental Indenture**

Early Continental indenture with wax seal.  
Site 14" x 10". 50.00 - 75.00





October 22 2011, Cataloged Estate Auction 10/22/2011

**LOT #**

**530 19th c. Needlework**

19th c. pastoral needlework. As found.  
25.00 - 50.00



**531 Charcoal Drawing Signed C. Chapman**

Charcoal drawing signed "Charles S. Chapman N.A.". Site 17 1/2" x 13 1/4".  
40.00 - 60.00



**532 19th c. Portrait Woman**

19th c. portrait woman. Unframed. 19 1/2" x 15". 100.00 - 150.00



**533 19th c. French Print**

19th c. French print "Le Rire". Site 11" x 9". 25.00 - 35.00



**534 Painting Continental School**

19th c. oil on canvas Orientalist seascape. Site 13" x 8 3/4". 50.00 - 100.00



**535 Print**

19th c. cow print. Frame as found. Site 9 1/2" x 19 1/2". 25.00 - 35.00



**536 Painting Still Life**

Painting pastel still life with fruit. Site 11 1/2" x 23 1/2". 50.00 - 75.00



**LOT #**

**537 Drawing Alexander Van Laer**

Drawing signed LLC "Estate of Van Laer". Also has plaque. Site 9" x 7 1/2". 50.00 - 75.00



**539 Pair Chippendale Style Chairs**

Pair Chippendale style chairs. 25.00 - 50.00



**540 19th c. Lincoln Rocker**

19th c. cane seat and back Lincoln rocker. 18" Seat Ht. 43" Overall Ht. As found. 10.00 - 20.00



**541 Chair Lot**

Lot 2 19th c. side chairs. 25.00 - 50.00



**542 19th c. Cabinet**

19th c. architectural medicine cabinet. 40.00 - 60.00



**543 19th c. Single Drawer Table**

19th c. N.Y. leg single drawer table. 50.00 - 75.00



**544 19th c. Desk Box**

19th c. desk box in black paint. 25" W 11 1/2" D 8" Ht. 40.00 - 60.00



October 22 2011, Cataloged Estate Auction 10/22/2011

**LOT #**

**LOT #**

**545 Knuckle Arm Windsor Chair**

Contemporary knuckle arm Windsor chair. 18" Seat Ht. 44" Overall Ht. 50.00 - 75.00



**552 Pair 19th c. Chairs**

Pair 19th c. English side chairs. 17" Seat Ht. 33" Overall Ht. 50.00 - 75.00



**546 Pedestals**

Pair 1950' s pedestals. 46" Ht. 25.00 - 35.00



**553 Miniature Painting Woman**

19th c. miniature portrait of a woman in carved wooden frame. Site 3" x 2 1/2". 50.00 - 100.00



**547 Empire Dresser**

19th c. Empire dresser. As found. 25.00 - 35.00



**554 19th c. Agricultural Cup**

19th c. agricultural cup "God Speed The Plough". 4" Ht. 50.00 - 75.00



**548 Benchmade Windsor Chairs**

Lot 3 Benchmade Windsor chairs. 100.00 - 150.00



**555 Side Table**

1950's round top side table. Top 18" Diameter, 26" Ht. 25.00 - 35.00



**549 Horner Bookcase**

1920's labeled Horner bookcase. Imperfections. 42" W 12 1/2" D 54" Ht. 50.00 - 75.00



**556 19th c. Leaded Crystal Compote**

19th c. leaded crystal compote. 9" Ht. 40.00 - 60.00



**550 Pen Holder**

Vintage pen holder from desk set. 10.00 - 20.00



**557 Pair Chinese Export Plates**

Pair Chinese export Fitzhugh style patriotic painted plates. 9 1/2" Diameter. 50.00 - 100.00



**551 19th c. Paw Foot Candlestand**

19th c. paw foot candlestand. Top 24" x 19", 28" Ht., veneer damage. 50.00 - 75.00



**558 Pair Tole Urns**

Pair tole painted urns. 15" Ht. 100.00 - 150.00



October 22 2011, Cataloged Estate Auction 10/22/2011

**LOT #**

**559 Set Of Candlesticks**

Set of 4 early chased reeded silverplate candlesticks. 11 1/2" Ht. 100.00 - 200.00



**560 Candleholder**

Cast metal floor candleholder. 39" Ht. 25.00 - 50.00



**561 Victorian Table**

19th c. Victorian table. Missing marble. 10.00 - 20.00



**562 18th c. Tavern Table**

18th c. Hudson Valley tavern table in as found condition. 50.00 - 75.00



**563 Leather Top Chest**

1950's leather top mahogany chest. 25.00 - 50.00



**564 Windsor Settee**

Windsor settee. 55" W. 50.00 - 100.00



**565 Chair Lot**

Lot 4 early chairs including pair early 19th c. figured maple cane seat. 50.00 - 75.00



**566 Saddle**

Vintage saddle. 25.00 - 50.00



**LOT #**

**567 19th c. Victorian Frame**

19th c. Victorian frame with copper bust of man. 11" x 13" Overall. 40.00 - 60.00



**568 Mahogany Table**

Mahogany Chippendale style cluster column leg table with fretwork design. Top 50" x 21" (closed), 30" Ht., top scratched. 50.00 - 100.00



**569 Cast Iron Bench**

Early cast Iron outdoor bench. 36" W. 75.00 - 125.00



**570 Silverplate Lot**

Lot silverplate lot including tea service, flatware, compotes etc., over 50 pcs. Also includes some various pewter. 25.00 - 50.00



**571 Book Picturesque America Vol. 2**

Eary "Picturesque America Vol. 2" book. 10.00 - 20.00



**572 Antique Reference Books**

Lot misc. antique reference books. 25.00 - 50.00



**573 Wicker Chairs**

Lot 2 contemporary wicker chairs along with an Adirondack twig stool. 25.00 - 50.00



October 22 2011, Cataloged Estate Auction 10/22/2011

**LOT #**

**LOT #**

**574 Rocking Chair**

Bentwood rocker. 10.00 - 20.00



**582 Print Beethoven**

19th c. engraving Beethoven. Site 19 1/2" x 15 1/2". 40.00 - 60.00



**575 Footstool**

Vintage upholstered footstool. 25.00 - 35.00



**583 19th c. Needlework**

19th c. needlework still life. Site 14 1/4" x 12 1/2". 40.00 - 60.00



**576 Armchair**

Jacobean style armchair. 25.00 - 35.00



**584 Painting Signed Kermeth**

Painting oil on artist board estate signed "W. Kermeth". Site 18 1/2" x 26 1/2". 50.00 - 75.00



**577 Kettle Stand**

Chippendale style kettle stand. 27" Ht. 40.00 - 60.00



**585 Painting Signed Evers**

Painting oil on canvas barns signed "Evers", as found. Site 29 1/2" x 24 1/2". 10.00 - 20.00



**578 Set Of Chairs**

Set of 4 19th c. chairs. One has no seat. 25.00 - 50.00



**586 Painting Still Life**

Painting oil on artist board still life. Site 23" x 19 1/2". 50.00 - 75.00



**579 Stone Columns**

Pair as is stone columns. 25.00 - 50.00



**587 Frame Lot**

Lot 3 19th c. Victorian frames (one has Currier & Ives Print). 50.00 - 75.00



**580 Watercolor Signed "G. Estabrooks"**

Watercolor still life signed "G. Estabrooks". Site 17 1/2" x 29". 50.00 - 75.00



**588 James Tyler Print**

James Tyler ship print. 10.00 - 20.00



**581 Pair Drawings**

Pair early pencil drawing landscapes. Site 9 1/2" x 3". 40.00 - 60.00



October 22 2011, Cataloged Estate Auction 10/22/2011

**LOT #**

**590 Lot**

Lot including 1920' s plant stand and 1950' s table. 10.00 - 20.00



**591 Woodenware Lot**

Lot misc. early and vintage wooden bowls. 25.00 - 50.00



**592 Furniture Lot**

Lot including Jacobean style smoking stand, 2 1950' s stands. 50.00 - 75.00



**593 Steamer Trunk**

Early steamer trunk. 40.00 - 60.00



**594 Drop Leaf Table**

1950' s mahogany drop leaf table. 25.00 - 50.00



**595 Stoneware Lot**

Lot 6 pcs. 19th c. various stoneware including decorated "J.B. Caire Co. Pokeepsie NY" jug (top chipped) and decorated 2 gallon crock. 75.00 - 125.00



**596 1920' s Table**

1920's carved 2 tier table. 34" Ht. 50.00 - 75.00



**LOT #**

**597 Victorian Mirror**

19th c. Victorian mirror. 20" x 42 1/4". 25.00 - 50.00



**598 Lot**

Lot including Victorian frame and mirror. 25.00 - 35.00



**599 Suitcase**

Vintage punched leather suitcase. 25.00 - 35.00



**600 Basket Lot**

Lot 28 various baskets. 25.00 - 50.00



**601 Lot**

Lot including towel rack and folding butlers table. 10.00 - 20.00



**602 Lanterns**

Lot 3 early (electrified) lanterns including "Dietz". 25.00 - 50.00



**603 Iron Bed**

1920's iron bed. 53" W 73" rails. 40.00 - 60.00



**604 Shelf**





Early 4 tier mortised shelf. 41" W 47" Ht. Along with a hanging wall shelf. 49 1/2" W 48" Ht. 50.00 - 75.00





October 22 2011, Cataloged Estate Auction 10/22/2011

- LOT #**
- 
- 605 Saws**  
Lot 2 early saws. 25.00 - 35.00
- 
- 606 Textile Lot**  
Large lot misc. vintage textiles including crewel spread, crocheted spread etc. 50.00 - 75.00
- 
- 607 Rug Lot**  
Lot 3 misc. scatter rugs. 25.00 - 50.00
- 
- 608 Vintage Tin Lot**  
Lot misc. vintage spice tins etc. 25.00 - 35.00
- 
- 609 Tobacco Lot**  
Lot misc. early tobacco tins, tip tray, humidor etc. 25.00 - 35.00
- 
- 610 Photography Lot**  
Lot misc. vintage photos. Some framed. 25.00 - 35.00
- 
- 611 Misc. Lot**  
Misc. lot including early document box, milk glass eggs, wire egg holder, Shaker style basket and box, Asian bowls, vintage scale etc. 25.00 - 50.00
- 

- LOT #**
- 
- 612 Lamp Lot**  
Lot misc. early oil lamps, chimneys, hurricane shades etc. 50.00 - 75.00
- 
- 613 Lot**  
Lot misc. iron including pans, Bootscaper, bookends etc. 40.00 - 60.00
- 
- 614 Lamp Signed Fabrico**  
Modern lamp signed Fabrico. Shade as found. 10.00 - 20.00
- 
- 615 Shaker Labeled Jar**  
19th c. New Lebanon N.Y. Shaker catsup jar. 6 1/2" Ht. 40.00 - 60.00
- 
- 616 Mahogany Shelf**  
Mahogany bookcase. 25.00 - 50.00
- 