



*Michael E. Fallon / Seth E. Fallon*

**COPAKE AUCTION INC.**

266 Rt. 7A/East Main Street - Box 47, Copake, N.Y. 12516

PHONE (518) 329-1142 FAX (518) 329-3369

Email: [info@copakeauction.com](mailto:info@copakeauction.com) - Website: [www.copakeauction.com](http://www.copakeauction.com)

## 29<sup>th</sup> Annual Bicycle Auction



**Auction: Saturday June 26, 2021 at 9AM**

**Preview: Online or by Appointment**

Until further notice auctions will **NOT** be open to the public and will be conducted via online, absentee and phone bidding. We can be contacted via e-mail or phone calls for any questions regarding lot conditions, bidding procedures, pick up or shipping inquiries or any other concerns you may have. Preview is ONLINE ONLY or BY APPOINTMENT. Call 518-329-1142.

**TERMS:** Everything sold "as is". No condition reports in descriptions.  
Bidder must look over every lot to determine condition and authenticity.

Cash or Travelers Checks - MasterCard, Visa and Discover Accepted \* First time buyers cannot pay by check without a bank letter of credit \* 18% buyer's premium, 23% buyer's premium for LIVEAUCTIONEERS, INVALUABLE & AUCTIONZIP online purchases.

*National Auctioneers Association*

## CONDITIONS OF SALE

1. Some of the lots in this sale are offered subject to a reserve. This reserve is a confidential minimum price agreed upon by the consignor & COPAKE AUCTION below which the lot will not be sold. In any event when a lot is subject to a reserve, the auctioneer may reject any bid not adequate to the value of the lot.
2. All items are sold “as is” and neither the auctioneer nor the consignor makes any warranties or representations of any kind with respect to the items, and in no event shall they be responsible for the correctness of the catalogue or other description of the physical condition, size, quality, rarity, importance, medium, provenance, period, source, origin or historical relevance of the items and no statement anywhere, whether oral or written, shall be deemed such a warranty or representation. Prospective bidders should inspect the merchandise thoroughly before bidding to determine its condition, size and whether or not it has been repaired or restored. All sales are final & refunds will not be given.
3. The auctioneer reserves the right to withdraw any merchandise before the sale and shall have no liability whatsoever for such withdrawal.
4. The auctioneer will be the final judge as to who is the successful bidder. In the event of any dispute the auctioneer shall at his discretion decide to reopen the bidding or not.
5. As a service to our customers the COPAKE AUCTION will execute absentee bids if so authorized in writing. Absentee bids should be made on the Bidder Form available in the office. This form should be clearly and completely filled out. All absentee bids will be executed competitively during the sale. Items will be purchased for the lowest price possible regardless of the amount of the order bid. Where two absentee bidders bid the same amount the first received will be honored. This service is offered as a convenience and COPAKE AUCTION will not be responsible for any errors or failures to properly execute the bids.
6. On the fall of the auctioneers hammer, ownership to the offered lot will pass to the highest bidder acknowledged by the auctioneer, and as such the bidder assumes full risk and responsibility and will pay the full purchase price of the item (s).
7. All items are subject to a **18% buyer’s premium, 23% buyer’s premium for LIVEAUCTIONEERS, INVALUABLE and AUCTIONZIP** which will be added to the successful bid price and is payable by the purchaser as part of the total purchase price.
8. All items are subject to an 8% sales tax unless the purchaser possesses a sales tax exemption number.
9. All accounts are to be settled by the end of the sale. We do not accept checks from first time buyers unless accompanied with a bank letter of credit or previous approval from the auctioneer. Payment may also be made by cash, Travelers Checks, MasterCard or Visa.
10. All property must be removed from the premises by 10:00 am on the following day after the sale unless other arrangements have been made with the auctioneer. Purchased items will be stored at a Copake Auction facility free of charge for (30) days after the auction. On the 31st day the items will be moved to an offsite storage facility to which they will incur the below fees:  
  
**Transportation, Handling & Administrative Fees:** Small items: \$40.00 per lot / Large Items: \$65.00 per lot  
  
**Storage Fees:** Small items: \$4.00 per day / Large items: \$10.00 per day
11. Bidding on any item indicates your acceptance of these terms and all other terms announced at the Auction Gallery.

**29th Annual Bicycle Auction 6/26/2021**

**LOT #**

---

**1 Colnago Men's Bicycle**

Colnago lightweight 22 1/2" men's bicycle. 18 speed. Continental Ultra Sport Tires. Mavic rims. Campagnolo accessories. Good condition. From the collection of award winning actor Anthony LaPaglia. Estimate: 500.00 - 700.00



meaning. Brass plate with French inscription. Original seat pan with leather pad. Frame is solid having 7 flat sides in an oval shape. Matching bronze pedals. Complete having retained the original patina. NOTE THIS OBJECT WILL SHIP FROM A DIFFERENT LOCATION AS IT ISN'T ONSITE DUE TO PANDEMIC. Estimate: 5,000.00 - 7,000.00

**1a Rare 1889 Psycho Safety Tandem**

Rare 1889 Psycho Safety Tandem. Starley Brothers, St. John's Works, Coventry, England. Serial #14 of possibly 100 units manufactured. Believed to be one of maybe a dozen examples left in the world. When the Starley Brothers exhibited their bicycles in 1888 and 1890, this Psycho did not appear, giving proof that this is a "one year only" production. Intended for ladies and gentleman with double steer and double brakes. 30" wheels fitted with new 7/8th tires. Weight 74 pounds. Geared to 57 inch. Matching ladies and mens saddles. Matching pedals. Both front and rear coasting steps. Rare example and opportunity. NOTE THIS OBJECT WILL SHIP FROM A DIFFERENT LOCATION AS IT ISN'T ONSITE DUE TO PANDEMIC. Estimate: 16,000.00 - 20,000.00



**3 Masi Men's Bicycle**

Masi lightweight men's 22 1/2" bicycle. Gran Corsa. Montreal rims. Gommitalia Aurum Servia Corse tires. Turbo saddle. Campagnolo accessories. Serial number 580607. Good condition. From the collection of award winning actor Anthony LaPaglia. Estimate: 300.00 - 500.00



**4 Cyclometer**

New Departure bicycle cyclometer in original box. Fair condition. Estimate: 50.00 - 75.00



**2 Vintage Columbia Banner**

Vintage Columbia bicycle shop banner. 29" x 40". Estimate: 100.00 - 150.00



**5 Viner Men's Bicycle**

Viner lightweight men's 22 1/2" bicycle. Mavic rims. Campagnolo accessories. Good condition. From the collection of award winning actor Anthony LaPaglia. Estimate: 500.00 - 700.00



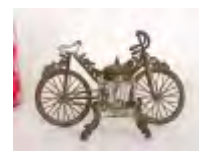
**2a 19th c. Boneshaker**

19th c. boneshaker. 38" front driving wheel and 32" rear wheel. Length is 73". Height from ground to top of handlebars is 48". Brass hub bands with wood spokes and rims. Tires are iron bands. Appears to be original decal on head, it's unclear of the



**5a Safety Bicycle Inkwell**

Early Safety bicycle inkwell. 6 1/2" x 3 1/2". Good condition. Estimate: 50.00 - 75.00



29th Annual Bicycle Auction 6/26/2021

LOT #

**6 1892 Columbia Bicycle Poster**

1892 Columbia bicycle poster. Woman posed with hard tire safety. Matted and framed. Frame overall 41" x 28 1/2". Estimate: 500.00 - 600.00



**6a 1911 Iver Johnson Truss Frame Bicycle**

1911 Iver Johnson Truss frame pneumatic safety bicycle. Model #188. 24" frame. Troxel saddle. French gray color. Barn fresh condition. Estimate: 300.00 - 400.00



**7 Dancelli Men's Bicycle**

Dancelli lightweight 21 1/2" men's bicycle. Needs pedals. Serial number DO 8183. Shimano crank. Good condition. From the collection of award winning actor Anthony LaPaglia. Estimate: 400.00 - 500.00



**8a C. 1890's Clipper High Wheel Bicycle**

C. 1890's Clipper high wheel bicycle with original St. Louis badge. 42" wheel with adjustable spokes at hub. Seldom seen model in rare youth size. Overall barn fresh condition. Estimate: 1,000.00 - 1,500.00



**9 Bianchi Men's Bicycle**

Bianchi lightweight 23" men's bicycle. 16 speed. Mavic rims. Vittoria tires. Campagnolo accessories. Good condition. From the collection of award winning actor Anthony LaPaglia. Estimate: 400.00 - 500.00



**10 Gazelle Men's Bicycle**

Gazelle lightweight men's 24" bicycle. Fiamante DuoComp tires. Velo saddle. Good condition. Serial number 3272702. From the collection of award winning actor Anthony LaPaglia. Estimate: 300.00 - 400.00



**10a Early Safety Bicycle Business Card Holder**

Early Safety bicycle business card holder. 6 1/2" x 5 1/2". Good condition. Estimate: 50.00 - 75.00



**11 Condor Men's Bicycle**

Condor lightweight men's 22 1/2" track bicycle. British Racing Federation wheel covers. Needs pedals. Serial number 0549/6038. Good condition. From the collection of award winning actor Anthony LaPaglia. Estimate: 400.00 - 500.00



**12 1899 Dursley Pederson Bicycle**

Scarce C. 1899 Dursley Pederson bicycle. Skip tooth chain. Barn fresh condition. Estimate: 1,000.00 - 1,500.00



**13 Mercian 22" Men's Bicycle**

Mercian lightweight 22" men's bicycle. Fancy lug model "VINCENTORE". Good condition. From the collection of award winning actor Anthony LaPaglia. Estimate: 300.00 - 400.00



**14 Columbia All Bright High Wheel Bicycle**

C. 1880's Columbia All Bright 50" High Wheel bicycle. Dust badge has patents ranging from 1869-1881. Good condition. Rear step, bell, matching pedals. Comes with stand. Estimate: 2,500.00 - 3,500.00



**15 Vitus Men's Bicycle**

Vitus Ovoid Tubing men's lightweight 22 1/2" bicycle. 24 speed. Shimano accessories. Mavic rims. Serial number E207093. Good condition. From the collection of award winning actor Anthony LaPaglia. Estimate: 400.00 - 500.00





29th Annual Bicycle Auction 6/26/2021

LOT #

15a Mary Gregory Glass Pitcher

Green glass with pewter lid Mary Gregory glass pitcher. Marked "ALL HEIL" with safety bicycle rider. 15" Ht.. Good condition. Estimate: 250.00 - 300.00



amorous cycling event; 38 lithographic scenes; and 6 of the famous collectible series showing a lady cyclist with a padded cloth cushion big bum. Generally from the first 20 years of the 20th century. A nice mix. Conditions vary but generally very good.

Estimate: 175.00 - 250.00

16 1935 Ingo Bicycle

C. 1935 Ingo-Bike, MFG. by Ingersoll Division of Borg Warner Co., designed to achieve perpetual motion with it's off set hub rear wheel. Nice restored condition. Estimate: 800.00 - 1,200.00



20 Hard Tire Safety Bicycle

C. 1880's Hard Tire safety bicycle. Nicely restored. Estimate: 3,000.00 - 4,000.00



17 Bianchi Men's Bicycle

Bianchi Campione D' Italia lightweight 21 1/2" men's bicycle. Campagnolo accessories. Good condition. From the collection of award winning actor Anthony LaPaglia. Estimate: 200.00 - 300.00



20a Fireball Bicycle Lamp

Early "Fireball" scarce bicycle lamp. Lens chipped. 4" Ht.. Estimate: 200.00 - 300.00



18 Bottecchia Men's Bicycle

Bottecchia 22" lightweight men's bicycle. 12 speed. Campagnolo rims and accessories. Good condition. From the collection of award winning actor Anthony LaPaglia. Estimate: 300.00 - 400.00



21 Cinelli "Bill Boston" Men's Bicycle

Cinelli "Bill Boston" 25" lightweight men's bicycle. Campagnolo accessories. Look pedals. San Marco saddle. Good condition. Serial number 74K03. From the collection of award winning actor Anthony LaPaglia. Estimate: 500.00 - 600.00



19 Vitus Men's Bicycle

Vitus Super Brava 23 1/2" lightweight men's bicycle. Campagnolo accessories. Dural forks. Mavic rims. Serial number 103755. Good condition. From the collection of award winning actor Anthony LaPaglia. Estimate: 200.00 - 300.00



21a Bicycle Clock

Clock with a High Wheel cyclist dressed as a Bicycle Club member. About 15-1/2" high x 8-1/2" wide x 5-1/2" deep. Dial reads in Roman Numerals and is 3-7/8" diameter. Key wind clockwork mechanism with key included. Mechanism is currently working but sold "as is". Runs with a Pendulum (included). At the top of the dial is a regulating adjustment for "S" or "F" controlling the time for slower or faster. Country of origin not identified but appears to be an American movement. Bought in USA. Clock produced circa 1880s. High Wheel cyclist on plinth produced circa 1880s to early 20th century. Possibly a trophy top. Multi colored stone body has a repaired crack at the top right rear corner. Good overall.



19a Postcard Collection

Postcard collection - All vintage or antique. Portrait format. 86 in total. Consists of 29 Real Photographic with Men & Women; 7 Real Photographic having youth on trikes; a series of 6 French printings of an



Estimate: 200.00 - 300.00

**29th Annual Bicycle Auction 6/26/2021**

**22 Gormully & Jeffery 50" High Wheel Bicycle**

C. 1880's high wheel bicycle. 50". Older restoration. Probably Gormully & Jeffery. Estimate: 2,500.00 - 3,500.00



**27 Bianchi Men's Bicycle**

Bianchi Milano 19" lightweight men's bicycle. Mavic rims. SQ lab saddle. Kena Kwest tires. Serial number H1G04397. Good condition. From the collection of award winning actor Anthony LaPaglia. Estimate: 200.00 - 300.00



**22a 28" New York Standard Bicycle Cyclometer**

Cyclometer – 28" New York Standard Watch Co. Produced circa 1896-1900. Nickel Plated. Porcelain dial. Original beveled glass is in excellent condition. 1-3/8" diameter. 3 openings (Hundreds) (Tens) (Units) + 2 dials (Thousands) (Fractions). Currently reads 488-6/10ths miles. Original bracket. Very good overall.. Estimate: 250.00 - 350.00



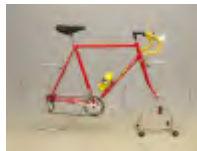
**28 28" Bicycle Cyclometer in Original Box**

28" bicycle Cyclometer in original box. American Clock Co., Boston Mass.. Good condition. Estimate: 175.00 - 225.00



**23 Basso Men's Bicycle**

Basso men's 22 1/2" lightweight bicycle. 12 speed. Serial number 57. From the collection of award winning actor Anthony LaPaglia. Estimate: 400.00 - 500.00



**29 Masi Men's Bicycle**

Masi Special 22 1/2" men's lightweight bicycle. 12 speed. Brevettata. Campagnolo accessories. Serial number M57. Good condition. From the collection of award winning actor Anthony LaPaglia. Estimate: 400.00 - 600.00



**24 High Wheel Pottery Vase**

Early High Wheel pose pottery vase. Stamped underside. 6" x 4" x 7 1/4". Good condition. Estimate: 150.00 - 200.00



**30 Pairpoint Safety Trophy**

Early Pairpoint Safety bicycle trophy. Wheel finial. 10 1/2" Ht.. Good condition. Estimate: 150.00 - 250.00



**25 De Rosa Men's Bicycle**

De Rosa 22 1/2" Titano E.O.S. lightweight men's bicycle. 16 speed. Campagnolo rims. San Marco saddle. Serial number HC423. From the collection of award winning actor Anthony LaPaglia. Estimate: 400.00 - 500.00



**31 Bianchi Men's Bicycle**

Bianchi 22 1/2" men's lightweight bicycle. 12 speed. Campagnolo accessories. Campione del Mondo. Campagnolo accessories. Good condition. From the collection of award winning actor Anthony LaPaglia. Estimate: 300.00 - 400.00



**26 Bianchi ITM Men's Bicycle**

Bianchi ITM men's 24" lightweight bicycle. Professional Cycling Team. Shimano ULTEGRA rims. Dura-Ace cranks. Serial number MG6401407. Good condition. From the collection of award winning actor Anthony LaPaglia. Estimate: 400.00 - 600.00



**32 Rih-Suner Men's Bicycle**

Rih-Suner men's 22 1/2" lightweight bicycle. 10 speed. Good condition. From the collection of award winning actor Anthony LaPaglia. Estimate: 300.00 - 400.00



## 29th Annual Bicycle Auction 6/26/2021

## LOT #

**33 1948 Monark Silver King Hextube Bicycle**

1948 Monark Silver King Hextube 26"  
Balloon Men's bike. Complete original bike  
features aluminum top pedestal headlight,  
springer fork, skirted chrome rear rack,  
Lobdell saddle with original marbled  
covering. Period Cordovan Whitewall tires.  
Good condition. Estimate: 2,500.00 - 3,000.00

**34 Rare 54" Lakin's High Wheel Cyclometer**

Rare 54" Lakin's High Wheel #986  
Cyclometer. Approx. 5 1/2" L.. Good  
condition. Estimate: 2,000.00 - 2,500.00

**35 Otto Hub Lamp**

Rare "The Otto" hub lamp. 10" Ht.. Good  
condition. Estimate: 2,500.00 - 3,000.00

**35a Early Clock with Safety Rider**

Early shelf clock with safety rider. Cherub  
holding wreath. 7 1/2" x 4 1/2" x 15". Fair  
condition. Estimate: 100.00 - 150.00

**36 Rare Butcher 54" High Wheel Cyclometer**

Rare Butcher 54" High Wheel Cyclometer.  
Approx. 4" L.. Serial number 2059. Good  
condition. Estimate: 1,200.00 - 1,500.00

**37 Pierce Arrow Men's Bicycle**

Pierce Arrow 23" men's lightweight bicycle.  
Ecco 105 saddle. Serial number 690 (?).  
Nervap cranks. Good condition. From the  
collection of award winning actor Anthony  
LaPaglia. Estimate: 75.00 - 125.00

**38 C. 1885 Pony Star High Wheel Bicycle**

C. 1885 "Pony" Star High Wheel bicycle,  
Mfg. by H. B. Smith Co., Smithville NJ.  
Featuring a 44" wheel, older restoration  
includes new front wheel. This example  
retains brakes, has proper solid rubber  
tires, restored saddle, pear grips. Stars have  
unique drive mechanisms and are  
considered America's first safety  
highwheel. They did very well in  
competition against other highwheel  
safeties. Pony's are considered the most  
comfortable riding machine in the Star  
safety series. Excellent rider. Good  
condition. Estimate: 3,500.00 - 4,500.00

**39 C. 1902 Pierce Model 542 Bicycle**

C. 1903 Pierce Model 542 Pneumatic Safety  
bicycle. Serial number 13956. Leaf spring  
front fork. Good restored condition.  
Estimate: 1,000.00 - 1,500.00

**40 Masi Gran Criterium Men's Bicycle**

Masi Gran Criterium 22" men's lightweight  
bicycle. Super Brava. Turbo saddle.  
Ritchey handlebars and seat post. Shimano  
cranks. 20 speed. Serial number MS12R710.  
Mavic rims. Good condition. From the  
collection of award winning actor Anthony  
LaPaglia. Estimate: 800.00 - 1,000.00

**41 C. 1890 Lustre Tricycle Lamp**

C. 1890 "Lustre" tricycle oil lamp. Good  
condition. 7" Ht.. Estimate: 300.00 - 400.00

**42 1896 High Wheel Bicycle Trophy**

1896 High Wheel bicycle trophy. 3 3/4" D.,  
5 3/4" Ht.. Estimate: 200.00 - 300.00



29th Annual Bicycle Auction 6/26/2021

LOT #

**42a 1937 Wards Hawthorne 26" Bicycle**

1937 Wards Hawthorne 26" bicycle. Older restoration. Features front light, rear rack, Duron tires. Good condition. Estimate: 300.00 - 400.00



**43 Basso Men's Bicycle**

Basso 23" men's lightweight bicycle. Campagnolo accessories. 18 speed. Serial number 824045. Good condition. From the collection of award winning actor Anthony LaPaglia. Estimate: 300.00 - 400.00



**44 High Wheel Spoke Wrenches**

Scarce lot of (6) early High Wheel spoke wrenches. Good condition. Case included. Estimate: 500.00 - 600.00



**45 Cavalera Men's Bicycle**

Cavalera 23 1/2" men's lightweight bicycle. Good condition. From the collection of award winning actor Anthony LaPaglia. Estimate: 200.00 - 300.00



**46 Greg Lemond Men's Bicycle**

Greg Lemond 23 1/2" lightweight men's bicycle. Campagnolo accessories. Serial number 150548. 16 speed. Good condition. From the collection of award winning actor Anthony LaPaglia. Estimate: 300.00 - 400.00



**46a 1938 Columbia Dashboard Model Bicycle**

1938 Columbia Dashboard model bicycle. 26" Michigan Safety Tread tires. Rear rack, front light. Stewart Warner Clipper dashboard. Good condition. Estimate: 500.00 - 600.00



**47 Rare C. 1870 Articulated Silverplate Cigar Caddy**

Rare C. 1870 articulated silverplate Cigar caddy. Repurposed as a trophy (award) by a Spanish Train Company. 7 1/2" L.. Good condition. Estimate: 400.00 - 600.00



**48 German Beer Stein**

German beer stein "ALL HEIL / Allgemeine / Radfahrer / UNION". 9 1/2" Ht.. Good condition. Estimate: 100.00 - 150.00



**49 Olmo Men's Bicycle**

Olmo 23 1/2" men's lightweight bicycle. La Biciclissima. Campagnolo accessories. Spinergy rear rim, Weinmann front rim. 14 speed. Good condition. From the collection of award winning actor Anthony LaPaglia. Estimate: 300.00 - 400.00



**50 Cinelli Frame, Forks & Rims**

Lightweight Cinelli frame, forks and rims. 23" frame. Good condition. From the collection of award winning actor Anthony LaPaglia. Estimate: 400.00 - 500.00



**50a Standard Cyclometer**

N.Y. Standard 28" Cyclometer in original box. Box 4" x 3" x 1 1/2". Good condition. Estimate: 150.00 - 200.00



**51 Eagle Female Pneumatic Safety Bicycle**

Eagle female pneumatic safety bicycle. Torrington Ct.. Fair condition. From the collection of award winning actor Anthony LaPaglia. Estimate: 50.00 - 100.00





29th Annual Bicycle Auction 6/26/2021

LOT #

**52 BSA Track Bicycle**

Early BSA. lightweight track bicycle. Wooden rims. Good condition. From the collection of award winning actor Anthony LaPaglia. Estimate: 500.00 - 600.00



**58 Legnano Men's Bicycle**

Legnano 23" men's lightweight bicycle. Ten speed. Vittoria Competition tires. Brooks saddle. Campagnolo accessories. Good condition. From the collection of award winning actor Anthony LaPaglia. Estimate: 300.00 - 400.00



**53 Cycling Club Trophy Display**

Early Cycling Club trophy display "THE "BROWN" SHIELD" / Presented to the / Westminster St. Georges Cycling Club / By J. C. Brown ESQ. / For Competition in / 25 Miles Handicaps. 17" x 15". Estimate: 200.00 - 300.00



**59 High Wheel Bicycle Clock**

Figural high wheel bicycle clock. Note bell top. 9" W., 9 1/2" Ht.. Good condition. Estimate: 350.00 - 400.00



**54 Pre-War Rollfast Female Bicycle**

Pre-War Rollfast female bicycle. Wooden rims. As found. From the collection of award winning actor Anthony LaPaglia. Estimate: 50.00 - 75.00



**60 Ritchey Swiss Cross Men's Bicycle**

Ritchey Swiss Cross men's lightweight bicycle. Carbon fiber rims. Serial number SC5T0096. Missing pedals. Good condition. From the collection of award winning actor Anthony LaPaglia. Estimate: 300.00 - 400.00



**55a Pierce Chainless Pneumatic Safety Bicycle**

C. 1890-1900 Pierce Chainless Pneumatic safety bicycle. Correct pedals, later handlebars and saddle. Top tube dented. Barn fresh condition. Estimate: 400.00 - 600.00



**60a Early Inkwell with Safety Riders**

Early trophy inkwell with safety riders. 9" x 10". Good condition. Estimate: 150.00 - 200.00



**56 RBC Tandem Bicycle**

RBC tandem bicycle. Ret Bar Cycle / Sun City Arizona / USA. Good condition. From the collection of award winning actor Anthony LaPaglia. Estimate: 150.00 - 200.00



**61 Cinelli Men's Bicycle**

Cinelli 22 1/2" men's lightweight bicycle. Campagnolo accessories. Needs pedals. Scheeren rims. Campagnolo accessories. Good condition. Serial number 7.39. From the collection of award winning actor Anthony LaPaglia. Estimate: 600.00 - 700.00



**57 Brass High Wheel Bicycle Trophy**

Early brass High Wheel Bicycle trophy. Rider posed with High Wheel. 8 1/4" overall Ht.. Good condition. Estimate: 150.00 - 250.00



**62 Chesini Men's Bicycle**

Chesini men's lightweight bicycle. 22" frame. Concor Supercorsa Comfort saddle. 12 speed. Vittoria Competition tires. Campagnolo cranks. Good condition. Serial number SNSL 35. From the collection of award winning actor Anthony LaPaglia. Estimate: 400.00 - 500.00



**29th Annual Bicycle Auction 6/26/2021**

**63 Pair NOS Tires**

Pair NOS 24" tires. United States No. 76 Giant Chain Tread. Estimate: 50.00 - 75.00



**64 Pogliaghi Men's Bicycle**

Pogliaghi "Italcorse" men's lightweight 22 1/2" bicycle. Campagnolo and Pogliaghi accessories. Good condition. From the collection of award winning actor Anthony LaPaglia. Estimate: 400.00 - 500.00



**65 Pat Hanlon Men's Bicycle**

Pat Hanlon 23" men's lightweight bicycle. Campagnolo accessories. Needs pedals and tires. 10 speed. Good condition. From the collection of award winning actor Anthony LaPaglia. Estimate: 300.00 - 400.00



**66 Large Frame with Bicycle Medals**

Large custom frame with over (80) early bicycle medals. Mostly Safety bicycle medals. Varied and scarce presentation. Frame overall 39 1/2" x 21 1/2". Note corners of frame have inset medals. Estimate: 1,000.00 - 1,200.00



**67 AF Gloria Milano Men's Bicycle**

AF Gloria Milano men's lightweight bicycle. 22" frame. 10 speed. Fair condition. From the collection of award winning actor Anthony LaPaglia. Estimate: 50.00 - 100.00



**68 Custom Bicycle Medal Display**

Custom bicycle medal display in the form of a Safety bicycle with rider. Frame C. 1970's. Features (2) plaques in stylized rims surrounded by medals. Over (60) medals. Overall 40" W., 19 3/4" Ht.. Estimate: 700.00 - 800.00



**69 Edoardo Bianchi Men's Bicycle**

Edoardo Bianchi men's 22 1/2" lightweight bicycle. Imperial saddle. Campagnolo accessories. Serial number V20873282836. From the collection of award winning actor Anthony LaPaglia. Estimate: 400.00 - 500.00



**70 Witcomb Men's 22" Men's Bicycle**

Witcomb men's 22" men's lightweight bicycle. 12 speed. Good condition. From the collection of award winning actor Anthony LaPaglia. Estimate: 300.00 - 400.00



**71 Fraysse Paris Sport 23" Men's Bicycle**

Fraysse Paris Sport 23" men's lightweight bicycle. Good condition. From the collection of award winning actor Anthony LaPaglia. Estimate: 150.00 - 200.00



**72 C. 1885 High Wheel Figural Barometer**

C. 1885 spelter metal High Wheel figural Barometer. 7" x 6 3/4". Good condition. Estimate: 300.00 - 400.00



**73 GER M. Cornelisse Men's Bicycle**

GER M. Cornelisse 23" men's lightweight bicycle. Mavic rims. San Marco saddle. Good condition. Some scratching to one fork. From the collection of award winning actor Anthony LaPaglia. Estimate: 300.00 - 400.00



**74 Look 19" Men's Bicycle**

Look 19" men's lightweight bicycle. Serial number 76496 XL. Stan's NOTUBES ZTR rims. Continental Super tires. Serial number 76496 XL. Good condition. From the collection of award winning actor Anthony LaPaglia. Estimate: 200.00 - 300.00



29th Annual Bicycle Auction 6/26/2021

LOT #

**75 Gazelle Men's Bicycle**

Gazelle trim trophy 22" lightweight men's bicycle. Serial number 3157343. Shimano cranks. Mavic rims. 12 speed. Good condition. From the collection of award winning actor Anthony LaPaglia. Estimate: 300.00 - 400.00



**76 1939 Westfield Columbia Bicycle**

1939 Westfield Columbia "Miami" Custom Deluxe Ladies Dashboard bike. Features Persons Majestic headlight, Horn tank, Torrington #17 streamlined pedal. Excellent original paint and graphics. Original Goodyear All Weather whitewall tires. Estimate: 3,500.00 - 4,000.00



**77 Specialized Langster 20 1/2" Men's Bicycle**

Specialized Langster 20 1/2" lightweight men's bicycle. Specialized saddle and handlebars. MONDO 700 x 23C tires. Serial number WUD8 0312328D. Good condition. From the collection of award winning actor Anthony LaPaglia. Estimate: 400.00 - 500.00



**78 Bianchi Premio Men's Bicycle**

Bianchi Premio 22 1/2" lightweight men's bicycle. Serial number 70185662. 12 speed. Good condition. Estimate: 300.00 - 400.00



**79 Meerschbaum Pipe with Boneshaker**

Meerschbaum pipe with boneshaker. Original fitted case. Case 8" L.. Good condition. Estimate: 150.00 - 200.00



**80 Vitus 23 1/2" Frame Men's Bicycle**

Vitus 23 1/2" frame men's lightweight bicycle. Cinelli handlebars. Vittoria Pro-Team tires. 12 speed. Concor S. Marco Max saddle. Serial number E066482. Good condition. From the collection of award



winning actor Anthony LaPaglia. Estimate: 300.00 - 500.00

**81 Pair Lobdell Rims & Tires**

Pair Lobdell rims and tires. 28". Good condition. Estimate: 100.00 - 150.00



**82 Pino Moroni Men's Bicycle**

Pino Moroni men's 22 1/2" lightweight track bicycle. Good condition. From the collection of award winning actor Anthony LaPaglia. Estimate: 400.00 - 500.00



**83 Focus Raven 20" Men's Mountain Bicycle**

Focus Raven 20" men's mountain bicycle. Serial number D153860C000050. As found. From the collection of award winning actor Anthony LaPaglia. Estimate: 150.00 - 200.00



**84 Columbia 28" Men's Bicycle**

C. 1920's Columbia 28" men's pneumatic safety bicycle. Barn fresh condition. Estimate: 100.00 - 150.00



**85 Bianchi Men's Bicycle**

Bianchi Rekord 22" men's lightweight bicycle. 12 speed. Serial number 9670. Campagnolo accessories. Good condition. From the collection of award winning actor Anthony LaPaglia. Estimate: 300.00 - 400.00



**86 C. 1891 Western Wheel Works Hard Tire Safety**

C. 1891 Western Wheel Works 30", "Our Special #10", hard tire safety bicycle. Nice restored condition. Features front lamp, bell. Comes with stand. Estimate: 3,000.00 - 3,500.00



29th Annual Bicycle Auction 6/26/2021

LOT #

**87 Bob Jackson Men's Bicycle**

Bob Jackson 22 1/2" men's lightweight bicycle. Campagnolo accessories. Omega 19 rims. San Marco saddle. Good condition. From the collection of award winning actor Anthony LaPaglia. Estimate: 300.00 - 400.00



**88 1939 Montgomery Wards Hawthorne Zep**

1939 Montgomery Wards Hawthorne "Zep" mens deluxe. Unique twin-bar frame construction. Complete with dual Delta Silver Ray headlights, illuminated horn tank & taillight rack, spring suspension front fork with fork lock, chrome full length chainguard, original Hawthorne Zep speedometer made by Stewart Warner, Wards Riverside Mate whitewall tires, Torrington 10 pedals. Original unrestored condition. Estimate: 3,500.00 - 4,000.00



**89 Cinelli Gazzetta Bicycle**

Cinelli Gazzetta bicycle. Fixed gear. 23" lightweight frame. Shimano WH-R550 front rim. Continental Gator front tire. ALEXRIMS G6000 rear rim, Bontrager rear tire. San Marco saddle. Serial Number 203TBK 562067. Good condition. From the collection of award winning actor Anthony LaPaglia. Estimate: 300.00 - 500.00



**90 Specialized Hard Rock GX Men's Mountain Bicycle**

Specialized Hard Rock GX men's 20" mountain bicycle. Serial number PO 644188. Good condition. From the collection of award winning actor Anthony LaPaglia. Estimate: 150.00 - 200.00



**91 Vintage Tank Bicycle**

Vintage 26" boys tank bicycle. Scarce round tank. As found. Estimate: 150.00 - 200.00



**92 Hetchins Men's Bicycle**

Hetchins 22" men's lightweight track bicycle. Chater Lea 1563-1. Good condition. From the collection of award winning actor Anthony LaPaglia. Estimate: 800.00 - 1,000.00



**93 Picchio Men's Bicycle**

Picchio men's 22" lightweight bicycle. 12 speed. Good condition. From the collection of award winning actor Anthony LaPaglia. Estimate: 300.00 - 400.00



**94 C. 1888 Humber Tricycle**

C. 1888 Humber No. 4 Gents Light Roadster Crippler tricycle. 30" and 26" wheels. Nice restored condition. Estimate: 4,000.00 - 5,000.00



**95 C. 1891 Juno Hard Tire Safety Bicycle**

C. 1891 Juno Hard Tire Safety bicycle. Provenance: Danbury Fair Auction. Good restored condition. Estimate: 2,000.00 - 2,500.00



**96 Frejus Men's Bicycle**

Frejus 24 1/2" men's lightweight bicycle. 10 speed. Campagnolo accessories. Missing pedals. Serial number 100536. Good condition. From the collection of award winning actor Anthony LaPaglia. Estimate: 400.00 - 600.00



**97 C. 1900 Orient Pneumatic Safety Bicycle**

C. 1900 Orient pneumatic safety female bicycle. Coaster brake. Good condition. Estimate: 800.00 - 1,200.00





29th Annual Bicycle Auction 6/26/2021

LOT #

**98 Columbus Men's Bicycle**

Columbus 22 1/2" mens lightweight bicycle. Motorola Cycling Team. Shimano crank. Chrina Rigid rims. Panasonic tires. 18 speed. Serial number M1203018. Good condition. Needs pedals. From the collection of award winning actor Anthony LaPaglia. Estimate: 300.00 - 400.00



**99 C. 1892 Columbia Pneumatic Safety Bicycle**

C. 1892 Columbia pneumatic safety bicycle. Split frame. Retains badge. Good condition. Estimate: 2,500.00 - 3,500.00



**99a Stevengraph-High Wheel Race, Woven Silk Picture**

Stevengraph. A woven silk picture of "The Last Lap" produced by Stevengraph Works of Coventry England circa 1879. Pictured is a race with five racers riding their ordinary or high wheel bicycles in front of a crowd of spectators at a track. Window of the picture is 1-7/8" x 6". Exterior of the frame is 11-3/4" x 9-3/4". Original mount with photocopy of the back of the mount included. Excellent colours. No mould or other commonly found signs of distress. Very good overall. Estimate: 125.00 - 200.00



**100 Gerber Men's Bicycle**

Gerber Concor 24" men's lightweight bicycle. Steiger rims. 12 speed. Good condition. From the collection of award winning actor Anthony LaPaglia. Estimate: 200.00 - 300.00



**101a Youth Sized Boneshaker**

Scarce 19th Century youth sized boneshaker. C. 1865-70, maker unknown. 30" front wheel, 26" rear wheel, correct acorn pedals. Barn fresh, wheels need restoration, incorrect saddle. Estimate: 1,000.00 - 2,000.00



**102 Frejus Men's Bicycle**

Frejus 23 1/2" men's lightweight bicycle. Campagnolo accessories. Brooks saddle. Cambio Corsa derailleur. Good condition. From the collection of award winning actor Anthony LaPaglia. Estimate: 400.00 - 600.00



**103 Harley-Davidson Tin Sign**

Harley-Davidson Motor Co. tin sign "CHAIN GREASE". Estate of Lucky T.. 11" x 14". Good condition. Estimate: 100.00 - 150.00



**104 C. 1937 Excelsior Schwinn Balloon Tire Bicycle**

C. 1937 Excelsior badged Schwinn "Cycleplane-Motorbike" balloon tire bicycle. One year deluxe Depression era balloon tire bicycle. Features Delta "Gangway" pancake horn, "Silver Ray" front fender lamp, Natural leather Troxel saddle, Uniroyal Chain tires. Restored, minor imperfections. Serial number B12014. Estimate: 1,000.00 - 1,500.00



**105 1941 Goodyear Balloon Tire Bicycle**

C. 1941 Goodyear badged Colson "Double Eagle Deluxe" balloon tire bicycle. Features Goodyear white wall tires, front and rear fender lamps, Troxel saddle, horn in tank, front suspension, correct chain guard, Persons tear drop pedals. Restored, minor imperfections. Serial number 7K611. Estimate: 1,000.00 - 1,500.00



**105a L. A. W. Beer Stein**

Early L. A. W. lithopane beer stein. Has a line right corner front, handle has damage. Estimate: 75.00 - 100.00



29th Annual Bicycle Auction 6/26/2021

LOT #

**106 C. 1939 Mercury "Pacemaker" Balloon Tire Bicycle**

C. 1939 Mercury "Pacemaker" balloon tire bicycle. This is the model they used in their 1939 World's Fair Exhibition. Featuring Carlisle "Lightning" white wall tires, Mesinger saddle, Toledo Seiss Horn. Serial number 29285. Restored, minor imperfections. Estimate: 800.00 - 1,200.00



**106a Bicycle Sign**

Decorative Reverse glass painted trade sign "WAVERLY CYCLES". 18 1/2" x 39". Estimate: 300.00 - 400.00



**107 C. 1937 Dayton Huffman "Super Streamliner" Bicycle**

C. 1937 Dayton Huffman "Super Streamliner" balloon tire Airflow bicycle. Featuring twin Delta Silver Ray Lead lamps, 3 rib long horn tank, Mesinger B Deluxe saddle, Persons tear drop pedals, Davis Deluxe White Wall tires, putter goose neck, Delta rear light and Persons tombstone reflector, serial number H9945. Restored, minor imperfections. Estimate: 1,500.00 - 2,500.00



**107a Pre-War Hawthorne 26" Bicycle**

Pre-War Wards Hawthorne 26" bicycle. B. F. Goodrich 26" Silvertown tires. Good condition, various period stickers applied. Estimate: 200.00 - 300.00



**108 C. 1939 Elgin "Elgin Racer" Airflow Tricycle**

C. 1939 Elgin "Elgin Racer" airflow tricycle. Scarce example with 20" front and 12" rear wheels. Features hand brake, "dust pan" rear platform, large handlebar bell. Restored, minor imperfections. Estimate: 250.00 - 350.00



**109 C. 1898 Cleveland Model 36 Chainless Safety**

C. 1898 Cleveland Model 36 chainless pneumatic safety bicycle. 24" frame, Manufactured by Lozier of Westfield Mass., features include handlebar bell (Corbin #45), leather tool pouch, matching toe clip pedals, Christy anatomical saddle, Twentieth Century lamp, coaster pegs, reproduction tires, clad rims, serial number 29126. Original unrestored condition. Estimate: 800.00 - 1,200.00



**109a Bicycle Sign**

Decorative Reverse glass painted bicycle trade sign "MONARCH BICYCLES". 12 1/2" x 70", one corner of glass broken. Estimate: 300.00 - 400.00



**110 C. 1900 Columbia Model 105 Chainless Bicycle**

C. 1900 Columbia Model 105 chainless pneumatic safety bicycle. 24" frame, project bicycle, includes frame with front forks, handlebars, wooden rims with York tires. Frame painted. In need of restoration. Serial number ATD Nov 18 1888 (?). Estimate: 400.00 - 600.00



**110a New Departure Silverplate Spoon**

Large New Departure silverplate spoon. 8 1/4" L.. Good condition. Estimate: 50.00 - 75.00



**111 Gianni Motta Men's Bicycle**

Gianni Motta 23 1/2" men's lightweight bicycle. Shimano cranks. Good condition. From the collection of award winning actor Anthony LaPaglia. Estimate: 300.00 - 400.00



**112 Early Hard Tire Safety Trophy**

Early white metal Hard Tire Safety trophy. Rider posed with HTS. 9 1/2" W., 11" Ht.. Stress crack on hand. Estimate: 150.00 - 200.00



**29th Annual Bicycle Auction 6/26/2021**

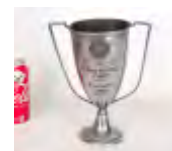
**112a 1902 Sears, Roebuck and Co. Catalog**

Sears, Roebuck and Co. Catalog #112 for 1902. Printed in Chicago. Original hard bound red cloth covers with stamped black printing. Size is 8-1/2" x 11-1/2". Over 1,088 pages. Advertised as over 100,000 pictures included in the catalog. Bicycles (pgs. 363 to 369) such as Newton, Kenwood, Acme, Elgin King & Elgin Queen, Napoleon and Josephine). Parts, Accessories and Tools (pgs. 370 to 375). Bicycle Cameras pgs. 278 & 280. Taps & Screw Plates pg. 662. Bicycle Hose pg. 802. Bicycle Shoes made of Kangaroo Calf pg. 865. Watches, Clocks, Jewelry, Clothing, Hardware, Sinks, Lamps, Travel Trunks, Linens, Linoleum, Furniture, Purses, Ladies Fashion, Ribbons, Ladies Lingerie, Guns, Guns, Fishing equipment, Musical Instruments etc., etc., etc. Humungous assortment of products offered. Some faults but good overall. Estimate: 200.00 - 300.00



**115 1924 Five Mile Race Bicycle Trophy**

1924 Five Mile Race bicycle trophy. 9" Ht.. Fair condition. Estimate: 50.00 - 75.00



**115a Young America Cast Iron Still Bank**

Early Young America cast iron still bank with key. 3" x 3" x 4 1/2". Good original condition. Estimate: 75.00 - 100.00



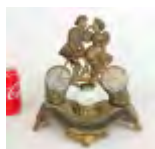
**116 Columbia Pneumatic Safety Chainless Bicycle**

1900 Columbia Model 66 female chainless safety bicycle. Serial #039. 28" wheels with ball end spokes, shaft drive and coast brake. Made by American Bicycle Pope MFG. Company. Features bell, front lamp. Good condition. Estimate: 1,000.00 - 1,500.00



**113 Early Tandem Bicycle Inkwell**

Early tandem bicycle with riders inkwell with original milk glass insert. Original paint. 9" W., 11" Ht.. Estimate: 150.00 - 250.00



**116a Bicycle Sign**

Decorative Reverse glass painted bicycle trade sign "VICTOR BICYCLES / A.G. WOLFE SALES / BOSTON / CHICAGO". Good condition. 10 3/4" x 35 1/2". Estimate: 300.00 - 500.00



**114 Wheelmen Trophy**

Early two handled trophy "LEAGUE OF AMERICAN WHEELMEN". Marked underside "ESSEX E.P.W.M.". 8" Ht.. Fair condition. Estimate: 50.00 - 75.00



**117 Fretwork Bicycle Shelf**

C. 1900 bicycle motif fretwork wall shelf. 24" x 21 1/2". Some slight losses. Estimate: 150.00 - 200.00



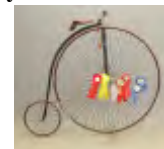
**114a Bicycle Sign**

Decorative Reverse glass painted bicycle trade sign "TRIBUNE BICYCLES". 12 1/4" x 34". Good condition. Estimate: 300.00 - 400.00



**118 C. 1880's Columbia Expert High Wheel Bicycle**

C. 1880's Columbia 52" Expert High Wheel bicycle. Comes with multiple prize ribbons. Comes with stand. Nice restored condition. Estimate: 2,500.00 - 3,500.00



**119 1941 Hawthorne Female Bicycle**

C. 1941 Hawthorne female "All American" female bicycle. Original condition. Estimate: 200.00 - 300.00



**29th Annual Bicycle Auction 6/26/2021**

**120 De Rosa Men's Bicycle**

De Rosa 23" men's lightweight bicycle. Campagnolo accessories. Continental Ultra tires. 16 speed. Serial number LH499. Mavic rims. Good condition. From the collection of award winning actor Anthony LaPaglia. Estimate: 300.00 - 400.00



**120a Bridgeport Bicycle Cyclometer**

Early 28" Bridgeport bicycle Cyclometer. Good condition. Estimate: 100.00 - 150.00



**121 C. 1889-1890 Rival 52" High Wheel Bicycle**

C. 1889-1890 Rival 52" High Wheel bicycle. Sold by Rouse Hazard and A. W. Gump and Co.. Retains hub lamp attached to wheel. Restored, good condition. Comes with stand. Estimate: 2,500.00 - 3,500.00



**122 Pair Heubach Figures with Safety Bicycles**

Pair early Heubach large size figures with Safety Bicycles. 15 3/4" Ht.. Small chip back of man's rim on bicycle. Estimate: 300.00 - 500.00



**122a Bicycle Poster**

Large early French bicycle poster. "Cie CYCLISTE DE LA LEGION DE LA GARDE REPUBLICAINE.../ SVELTE CYCLES / ST. ETIENNE". Frame overall 53" x 76". Good condition. Estimate: 800.00 - 1,200.00



**123 Early Enameled "CENTAUR CYCLES" Trade Sign**

Early enameled "CENTAUR CYCLES" trade sign, "CENTAUR / TRADE MARK / CYCLES / ESTd/ 1876/ IMPERIAL ENAMEL / CO. Ltd / Birmingham" 30" x 14". Fair condition. Estimate: 400.00 - 500.00



**124 Rare Figural Eagle Carbide Bicycle Lamp**

Rare figural Eagle carbide bicycle lamp. 8 1/2" Ht.. Good condition. Estimate: 800.00 - 1,200.00



**125 Victorian Glass Bicycle Projection Slide Set**

Glass Projection slides. Belle Belton and Her Bicycle. Full colored set in the original box. 3-1/4" square numbered from 1 to 12. Box reads: Superior Coloured Lithographic Slides. Made by Theobald & Co., England, ca 1910. Set attributed to W. Rider because of the presence of the identified 'short man' with the sideburns' model in the role of the cycling tutor. Accompanied with the research for the titles and text. No chipped or cracked slides. All suitable for projection. Box has some soil. Very good condition over all.



Estimate: 125.00 - 175.00

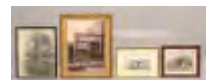
**125a Bridgeport Bicycle Cyclometer**

Early 28" Bridgeport bicycle Cyclometer. Good condition. Estimate: 100.00 - 150.00



**126 Bicycle Photograph Lot**

FRAMED photographic pictures – 4 assorted. Copy images. (1) Man on High Wheel bike. Marked on reverse "Fred B. Evans – On An 1885 Victor Bike". Frame 11-3/4" x 14-5/8"; (2) Steam powered hard tired tricycle. Rural scene circa 1890. Frame 12-3/4" x 9"; (3) Rural scene circa 1890 with two hard tired safeties. One a Victor Lady's sprung fork and the other a man with his h. t. s. cycle. Outside measurements are 11-1/2" x 9-1/4"; (4) George H. Houck Bicycles – Repairing and Renting. At the store front there are bicycles and tandems. Store sold Tribune bicycles. Note the poster in the window with for Mile-a-Minute Murphy on his Tribune behind the train riding on the Long Island Railroad. Image 1899. Exterior 15" x 18-1/2"; Some professionally framed. Very good overall. Estimate: 150.00 - 200.00





**29th Annual Bicycle Auction 6/26/2021**

**126a Lady Cyclist Tobacco Photograph Cards**

Photographs – 3 Lady Cyclist photographs. All published circa 1888 as Tobacco Cards. First is a lady (MLLE LILLIS) on a High Wheel, Penny Farthing Bicycle balancing with one leg over the handlebars. Photographs of Ladies on high wheel bikes are not commonly found. Albumen photo. Size is 1-3/8" x 2-5/8". Published for DUKE CIGARETTES; Second is published for Virginia Bright Cigarettes and has a lady preparing to mount her High Wheel bicycle. Size is 1-3/8" x 2-5/8". Some fade; Third is a Risqué dressed lady on a Cross Frame Hard tired safety. Size is 2-1/2" x 4". Albumen photo published for HONEST LONG CUT Tobacco. ; Good overall condition. Estimate: 75.00 - 100.00



**127 1897 Outing Poster**

Poster. For the April issue of OUTING magazine done circa 1897. Artist is Hy S. Watson. Victorian Art Nouveau style. Genuine Lithograph of the era. Not a copy or reissue. Male and female riders on Columbian bicycles seemingly riding out in the country. Exterior of Frame is 16-1/2 x 18-1/2". Modern framing. Some imperfections. Good overall. Estimate: 150.00 - 200.00



**127a High Wheel Photograph**

Photograph of an unidentified gentleman inset onto the front wheel of an Ordinary bicycle. Cabinet Card is 4-1/4" x 6-1/2. Taken circa 1890. This by an important and famous Boston photographer named Elmer Chickering who was a noted photographer of actors, actresses, sports figures and famous personalities as well as all types of contemporary scenes. James Corbett, John Philip Sousa and Enrico Caruso are but a few of his noted clients. Some fade. Very good overall. Estimate: 150.00 - 225.00



**128 Early Framed Bicycle Prints**

Framed antique lot of 3 pictures. All genuine and of the era. (1) Velocipede print from Harper's Weekly magazine of New York City of May 1, 1869. Titled "The Velocipede Mania - What It May Come To!" Drawn by Thomas Worth. The street is full of velocipede bicycles and tricycles. Includes business men, a soldier, milkman, baker, farmer and others. Humorously, it shows Shanks Livery Stable closed seemingly because horses are no longer necessary. Consequently they are butchered and the horse Meat Shop is now open next door. Genuine wood block engraving of the era. Modern framing. Exterior of frame is 15-3/4" x 11-3/4". Very good overall.; (2) Engraving of two Penny Farthing Cyclists chatting up two lady tricyclists on their Sociable. From Punch of London England. Titled "Modern Athletics – A Diplotribicyclical Quartet. Dated June 10, 1882. Exterior is 9-3/4" x 8". Contemporary print in modern framing. Very good condition; (3) Color chromolithograph titled "KEEPING UP WITH THE TIMES - THE PROGRESSIVE TRAMP TAKES TO THE WHEEL", published in PUCK, November 1887. High Wheel Cyclist (a tramp) panhandling the "gentry upper class" while in their carriage in a Central Park type scene. Artist is C. J. (Charles Jay) Taylor who lived from 1855-1929 and whose work can be found at the Smithsonian). J. Ottmann Litho of N.Y. – Puck Building – N. Y. Exterior of the Frame is 16-3/4" x 13-3/4". Very good overall condition; Very good overall. Estimate: 150.00 - 200.00



**128a Papier Mache Lady Velocipede Patch Box**

Papier Mache Snuff or Patch Box. Hinged Lid. French circa 1870. 3" x 1-1/2" x 7/8". Lady Velocipede rider along a country road is wearing a risqué costume. Signs of use. Estimate: 175.00 - 225.00



29th Annual Bicycle Auction 6/26/2021

LOT #

**129 Early Framed Bicycle Photograph**

Photograph. The Anchor hotel in Ripley, Surrey England. This photo was used in Andrew Ritchie's groundbreaking book titled King of The Road (see page 140). Has many bicyclists, a tandem and a triplet in the image. Taken 1896. This is from the original glass plate negative (provenance supplied after the sale upon request). Exterior of the frame is 18-1/2" x 15-1/2". Modern framing. Excellent overall. Estimate: 150.00 - 200.00



seriously impressive group of upper class spectators. Exterior of frame is 30-1/2" x 24". Exceptional modern framing of this attractive 19th century European print. Disbound. Very good condition. Estimate: 150.00 - 200.00

**132 Set of (3) Tour De France Posters**

1958 Tour de France posters. Produced by Huret (dérailleur producers) for use in bike shops, bars, clubs, restaurants etc. to actively mark the progress of the race. This is a 3 piece set likely printed with rubber mats rather than lithography. Sizes (all somewhat similar) range up to 23" x 22". First is the total map of France. Second shows France with a chart to list the stage winners. Third allows notes and marking to memorialize happenings. This was the 45th edition of the Tour which ran from June 26th to 19 July 19th. It was 24 stages (starting in Brussels) over 4,319 km (2,684 miles). Bobet and Anquetil were the most noted riders in the field. It was won by Charly Gaul from Luxembourg who rode for the Netherlands/Luxembourg team. Condition is very good and likely as distributed. Estimate: 150.00 - 250.00



**130 1897 William McKinley Print**

Print. Chromolithograph published by the J. Ottmann Lithograph Co. of Buffalo at the Puck Building in New York. This was for Civil Service Reform with German text for the German edition of Puck Magazine. Has the American President, William McKinley on a tandem bicycle. He is dressed in feminine attire while cycling as well as in the other vignettes. Exterior of frame is 32-1/2" x 24". Artist is C. J. Taylor. Copyright done in 1897 by Keppler and Schwarzmann. The Library of Congress maintains a collection of Puck prints. Disbound. Very good overall. Estimate: 100.00 - 150.00



**133 C. 1896 Poster "Philadelphia Sunday Press"**

Poster. For the Sunday, June 7th, 1896 edition of the Philadelphia Sunday Press. Male and Female rider. Note the prominence of the female rider as an indication for their target marketing. A genuine Victorian Lithograph in the Art Nouveau style. Of the era. Not a copy or reissue. Attributed to George Reiter Brill. Exterior of the frame is 19" x 25-1/2". Modern framing. Some imperfections. Good overall. Estimate: 300.00 - 400.00



**130a Brass Bicycle Trays**

Lot (2) brass bicycle trays. One heavy ashtray with Cyclist on Safety bicycle (6 1/2" x 5"), other tip tray with Velocipedes (3 1/2" x 5"). Good condition. Estimate: 50.00 - 75.00



**131 C. 1898 Print "Velodrome in Paris"**

Print. Engraving titled "Modernes Velodrom in Paris" by Georges Scott. In this instance the word "Modernes" is meant to convey not only the up to date modernity of and at the Velodrome but what the smart set are doing that season. Circa 1898. Note how the positioning of the spectators is sideways in order for them to be "seen" rather than "see" the racing. A



**134 1819 Hobby Horse Print**

Print. Hobby-horse Riding School engraving by H. Alken published April 17, 1819. Highly important historic cycle print of the Georgian era. Titled – Johnsons Pedestrian Hobbyhorse Riding School – at



**29th Annual Bicycle Auction 6/26/2021**

377 Strand & 40, Brewer Street, Golden Sqe (London England). One of the very first hobby-horse prints created. This is an important engraving. Genuine and of the era. Exterior of frame is 23-1/2" x 18-1/2". Excellent condition.  
Estimate: 300.00 - 500.00

**135 1894 English Bicycle Trophy**

Trophy – 9" tall by 7-3/4" widest. 50 Miles Handicap - North Road Cycling Club - 50 Miles Handicaps – 1894 - Best Average in 3 races won by W. M. Crosbie and presented by A. J. Begbie. Exceptional hand worked repose deeply embossed Victorian Foliate silver plated trophy. The North Road Cycling Club is an old English club which was formed in 1885. Very good original "as found" condition.  
Estimate: 200.00 - 300.00



**135a German Dagger with High Wheel**

Early German dagger with High Wheel. 10" L.. Note lion head at end. Fair condition.  
Estimate: 40.00 - 60.00



**136 Bicycle Racing Photographs**

- Lot of RACING Photographs from the 1960s. Over 80 snapshots all Black & White. (1) 6 Day Race from Sept. 22-28, 1961 at Madison Square Gardens in New York consists of 6 photos. Includes trophy designed by Michael Fina and track scenes. (2) Century Road Club of American taken on Long Island ca mid-1960s consists of 11 photos. Includes Banner, rest stop, start and racing scenes. (3) Encino California Velodrome from July 1965. Consists of about 67 photos. Includes mainly racing scenes as well as Starts, some Team Montrose members, stands and the like. Condition is very good overall.  
Estimate: 75.00 - 125.00



**137 C. 1900's Racycle Bicycle**

C. 1900's Racycle lightweight track bicycle. As found condition. Estimate: 200.00 - 300.00



**137a Bicycle Trade Sign**

Figural cast metal bicycle racer trade sign "BIKES". Comes with mounting bracket. 28" x 35", 3" thick. Good condition.  
Estimate: 400.00 - 600.00



**138 Bicycle Lamp**

Lamp – Carbide Lamp – COLUMBIA Model "C Automatic" made by HINE-WATT MFG CO. of Chicago, Ill. Nickel Plated. This an early example of a carbide lamp. Patent dates marked to base range from 1898 to 1900. Very good condition.  
Estimate: 75.00 - 100.00



**139 Bicycle Lamp**

Lamp - Lucas Oil complete with Font – Silver King made by Jos. Lucas Ltd. of Birmingham, England. Lens in excellent condition. Springs are strong. Edwardian ca 1905. Nickel plated. As found condition. Missing Oil Reservoir cap at side. Very Good overall. Estimate: 75.00 - 100.00



**140 C. 1890 Skirt Clip**

Skirt Clip. Ladies Victorian antique vanity object. Nickle plated foliate pierced clip to fit on belt. Original cord. Clip marked "L.D". 9-1/4" long. Very good overall.  
Estimate: 100.00 - 150.00



**140a Bicycle Trophy**

Pewter bicycle trophy "ALL HEIL". Safety rider trophy. 17 1/4" Ht.. Good condition.  
Estimate: 100.00 - 150.00



**29th Annual Bicycle Auction 6/26/2021**

**141 C. 1890 Brass Cyclist's Signal Horn**

- Horn. Cyclist's Warning or Signal horn. Early model with stitched brass construction. Two note single valve. 6-1/2" overall. Brass and nickel. Circa 1870-80s as used by High Wheel cyclists or tricyclists. Very good condition. Estimate: 125.00 - 175.00



dressed in a boater straw hat, Leg of mutton blouse and fashionable dress. Foot rests on the front fork. Very good condition. Estimate: 75.00 - 100.00

**141a Columbia Bicycles Thomas Stevens Print**

- Print. Thomas Stevens "Around The World On An Expert Columbia" advertising print for Columbia Bicycles. Published by Pope Manufacturing Co. of Boston, New York & Chicago. Exterior of frame is 13-5/8" x 15-5/8". Artist is J. W. Trowbridge circa 1883. Has Stevens on a High Wheel bicycle riding in front of a fence and another vignette of Stevens on a High Wheeler with the earth being the center of the front Wheel. Original antique print from a journal. Modern archival framing. Very good condition. Estimate: 75.00 - 125.00



**143a French Erotic Stereoviews**

- Stereoviews – Complete Set of 6 Erotic French tissue mount views. An uncommonly found risqué set. When held to the light behind the stereoview lovely hidden colors appear in blue, yellow, white and reddish-pink. "NOS MONDAINES" translates to "Our Socialites". A complete series titled "Une Bicycliste" which translates to the female gender for "A Bicyclist". Partial breast exposure on a few of the cards but first 4 have her setting up the bike in her undergarments. Lady is wearing Bloomers. Set circa 1898. Card #5 has a tear in the tissue which does not protrude into the surface print. Very good overall with some light soil but albumen tissues are fine. Estimate: 150.00 - 250.00



**142 Bicycle Locks**

Locks - Lot of 5. Two short chain locks with keys. One is 1-1/4" x 1-1/4". Other is 1-5/8" x 1-3/8". Both marked made in Germany circa 1910-30s; Round chain lock is 1-7/8" diameter marked "RECORD - 2030" lacks key. American circa 1900.; VICTOR padlock made by the Eagle Lock Co. of Terryville, CT. USA. 2-1/8" widest x 3-3/8" high overall. Circa 1890s. Lacks key; Smallest is a "MIDGET - SIX LEVER" "Made in USA". No key. 1-1/2" wide x 2" tall overall. Circa 1900; Conditions vary. Estimate: 75.00 - 100.00



**143 Bicycle Photograph**

Photograph of a Lady in original ca 1895 Victorian Art Nouveau cast Brass Picture Frame. Deeply embossed frame is 5-1/2" x 8-3/4" tall. Has original glass cover over the photo. Cabinet Card photograph is of a fashionably dressed attractive Lady Cyclist holding her drop frame Pneumatic Safety with Wooden Rear Mudguard. She is



**144 Bicycle Photograph Lot**

Photograph Lot of 10 pcs. 5 Cabinet cards consisting of: 1 with two hard tired cross framed safetys and a girl with a hoop toy ca 1887; Lady with her Drop frame Columbia bicycle identified on the reverse as July 9, 1898 - Sister Lenna. Photograph taken by W. R. Carr of Onset, Mass.; 1 Man's safety circa 1898 with a Bell, pump & tool kit; 1 Lady with her drop framed safety circa 1897. Appears as wooden handlebars with a lace skirt guard; 1 with two Victorian ladies wearing straw boater hats accompanying their drop framed safeties circa 1895. Both have plated front fork tips, wooden chainguards and bells; Unmounted photo early 1900s from Galt Ontario Canada of C. R. Banks Bicycle Shop with bikes in the window and a sign in front of an early motorcycle which reads: LOOK : THE FIRST MOTOR CYCLE IN CANADA. Size is 6" x 4". Some identification on the reverse; Unusual wooden made "Hobby-horse" style bicycle. Sprung bell protruding from the





**29th Annual Bicycle Auction 6/26/2021**

rear and a candle mounted at the front.  
4-1/4" x 3-1/4" photo is circa 1895; Tintype photograph (circa 1894) of 3 men with their safetys. 2-3/8" x 3-5/8"; 2 carte de visite (2-1/2" x 4") photographs from Sweden. One from Sannahed is a Crescent bicycle and the other taken in Orebro. Both men formally dressed.; Conditions vary.  
Estimate: 100.00 - 200.00

**145 Photograph of High Wheel Rider**

Photograph – High Wheel cyclist mounted on his bike. Open head ordinary with Hill & Tollman bell and Hub Lamp. Circa 1880. Likely an early Columbia or Hillman, Herbert & Cooper. Inside studio photograph taken in Rome, NY. Size is 5" x 10". Upper right corner chip to photo. Some other distress. Good condition overall.  
Estimate: 100.00 - 150.00



**145a Bicycle Sign**

Decorative Reverse glass painted bicycle trade sign "UP TO DATE / WHEELS". 14" x 20". Good condition. Estimate: 200.00 - 300.00



**146 Photograph of High Wheel Rider "John Keen"**

Photograph – John Keen (a.k.a. Happy Jack) was one of the world's most important and famous penny farthing racers – Woodburytype – Published for and disbound from a contemporary ca 1878 Journal. Keen was a famous maker as well as racer and visited the United States in 1876 and 1879. Considered to be the fastest bicycle rider in the world. An important image. Mount is 2-3/4" x 4". Overall good condition.  
Estimate: 150.00 - 250.00



**146a Bicycle Sign**

Reverse glass painted bicycle trade sign "CLEVELAND BICYCLES....". 14" x 26". Good condition. Estimate: 300.00 - 400.00



**147 Cast Iron Safety Rider Doorstop**

Scarce cast iron Safety Rider doorstop. 8 1/2" x 10". Estimate: 150.00 - 250.00



**147a Wheelmen Ephemera Lot**

- The Wheelmen – Ephemeral lot. Consists of 12 Sustaining Associate Membership photos (2000, 2004, 2006 thru 2015); 4 Membership Rosters being 1995-1996, 1999-2000, 2001-2002 & 2003-2004; 2 Handbooks (1996 Second edition & 2004 Third edition), and 21 Newsletters (various) from Vol. 26 No. 2 - April 1996 to Vol. 34 No. 2 - April 2004. Generally very good condition. Estimate: 25.00 - 50.00



**148 Search Light Bicycle Lamp with Accessories**

Early embossed Search Light bicycle lamp with scarce extra handle. Good condition. Estimate: 200.00 - 300.00



**149 Carpenter Men's Bicycle**

Carpenter 22" men's bicycle. Brooks saddle. Wooden rims. Serial number 3642. Good condition. From the collection of award winning actor Anthony LaPaglia. Estimate: 300.00 - 400.00



**150a Every Ready English Bicycle Lamp**

Ever Ready English electric bicycle lamp. 5" Ht.. Lens cracked, otherwise Good condition. Estimate: 100.00 - 150.00



29th Annual Bicycle Auction 6/26/2021

LOT #

**151 Print "A Steam tricycle in year 1828"**

Scarce print "A Steam tricycle in Year 1828". Marked J. H. Brown LLC. Sight 9 1/2" x 12 1/4". Good condition. Estimate: 200.00 - 300.00



**151a Bicycle Print "Famous Personalities"**

Print. Famous and important celebrities of American bicycle manufacturing. Includes R. P. Gormully, T. B. Jeffery (G & J), H. A. Lozier (Cleveland), A. H. Overman (Victor-Overman Wheel), Col. A. A. Pope (Columbia), W. Measure (Union Cycle), Chas. L. Ames & A. H. Frost (Ames & Frost). Exterior of frame is 13-1/4" x 16". Original antique print from a journal. Modern archival framing. Very good condition. Estimate: 75.00 - 125.00



**152 Print "Going to the Races"**

Scarce print "Going to the Races" (London Published May 14, 1919 by J. Jegg...). Some slight imperfections. Sight 9 1/4" x 12 1/4". Estimate: 200.00 - 300.00



**153 Bicycle Print "A Family Party takeing an Airing"**

Scarce print "A Family Party takeing an Airing" (Pub. March 24, 1819, J. Jegg...). Good condition. Sight 9" x 13". Estimate: 200.00 - 300.00



**154 Hobby Horse Print**

HOBBY HORSE Print. This is the only known Hobby Horse print published in America. The basis for the image was from the earliest known English Hobby Horse print featured in Ackerman's Repository of Arts dated 1st February 1819. The American print was copied as a copper etching and inset into "The Analectic Magazine, No. 78 Vol. XII, June 1819". The paper is approximately 8-5/8" x 5-1/4". The image is 5" x 7". It was published in



Philadelphia by M. Thomas, printed by James Maxwell and engraved by E. W. Clay of New York. Estimate: 200.00 - 300.00

**154a Bicycle Photographs**

- Photographs - 3 original 19th century framed photos. First is a Cyanotype (blue tone) of 3 safeties with some youthful spectators. Circa 1894. American. Exterior of the frame is 11-1/2" x 8"; Albumen photo of a family. Circa 1896. Rural scene. Rope hanging down from a tree has a loop used for inserting a foot for swinging. Exterior of the frame is 11" x 8-3/4"; Street scene at the front of the Waverly Free Press building. Photographer identified as L. E. Bacon of Waverly, N.Y. Lots of bunting on the store fronts. Nice crisp image. Taken circa 1897. Exterior of the frame is 10" x 8". Very good overall; Nice selection. Antique photos in modern professional framing. Very good overall. Estimate: 75.00 - 100.00



**155 Early Wheels Lot**

Lot (3) early wheels. Schwinn Paramount high flange track wheels and Schwinn Superior rear. C. 1930-40s. Good condition. Estimate: 50.00 - 75.00



**155a Lady on Safety Bicycle Mirror**

Early Lady on Safety bicycle mirror. 8" x 9 1/4". Fair condition. Estimate: 50.00 - 75.00



**156 Early Tire Tool**

Early tire tool. 25" W. Fair condition. Estimate: 50.00 - 75.00



**157 Blue Riband Men's Bicycle**

Blue Riband men's 22 1/2" lightweight bicycle. Brooks saddle. Good condition. From the collection of award winning actor Anthony LaPaglia. Estimate: 200.00 - 300.00



**29th Annual Bicycle Auction 6/26/2021**

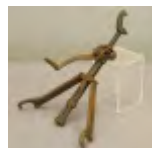
**158 Early Tire Tool**

Early tire tool. 23 1/4" W.. Fair condition.  
Estimate: 50.00 - 75.00



**159 Universal Tire Tool**

Universal tire tool. Fair condition. Estimate:  
50.00 - 75.00



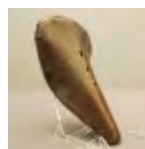
**160 Auto Lamps**

Early Dietz and Solar Auto lamps. Tallest  
15 1/2" Ht.. Estimate: 50.00 - 75.00



**160a Bicycle Saddle**

Bicycle racing saddle. Good condition.  
Estimate: 50.00 - 75.00



**161 Tandem Tricycle Photograph**

Photograph – Tandem Tricycle – Albumen  
Imperial Cabinet sized – 8-1/2" x 5-1/4".  
Two clubmen (appear to be brothers) in  
cycling uniform. American circa 1885.  
Trike has two tool kits and a front lamp  
bracket. Note plank sidewalk behind. Small  
chip to photo at bottom right corner. No  
photographer or markings. Estimate: 150.00  
- 250.00



**162 Bicycle Photograph**

- Photograph of a home with two high  
wheel bikes at the front. Group of 8 people  
with a hammock on the front porch. Photo  
taken by Chamberlain of Woonsocket  
(Rhode Island) and Cottage City (Mass.). J.  
N. Chamberlin's photography is  
represented in the Harvard Museums and  
Getty Museum collections. Size is 10" x 8".  
Produced circa 1886. Gas lamp has  
discernable text and with research should  
be fully identifiable. Photo has darkened.  
Otherwise very good overall.  
Estimate: 300.00 - 350.00



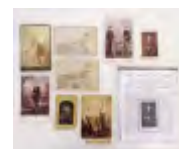
**163 Bicycle Photograph Lot**

Photographs – 5 Large Format – 19th  
Century – (1) 1st is a circa 1890 with an  
early Victor Cushion or Hard Tired Sprung  
Front Fork Safety and an Ordinary or High  
Wheel bicycle to the left. Interesting social  
scene. Albumen photo's exterior is 14" x  
10-3/4". (2) Two gentlemen with Bowler  
Hats, cigars and pneumatic Safetys.  
Exterior of the matt is 12" x 10". Circa 1900.  
(3) THE HERCULES BUGGY CO. of  
Evansville Indiana. Over 35 difference  
factory scenes. Some bicycles portrayed.  
Photograph identified as taken by W. J.  
REICH, 713 Main St., Evansville, Ind.  
Reverse in script reads: " 1906 - Built any  
shift - 260 buggies a day". Owner of the  
photo is identified as "Edward Leistner of  
Cincinnati Ohio". Script in another reads  
"1902" which was probably when the  
photo was taken. Exterior is 12" a 8-1/2"  
(4) Home constructed of Stone blocks with  
a family posed outside. Youth holding  
dad's bike along with a dog, mom and dad.  
Exterior of mount is 10" x 8". Circa 1900 (5)  
Railroad Velocipede carrying 5 men. Pump  
style motion. Exterior size is 8-1/4" x 10".  
Albumen image. Circa 1890. Conditions  
Vary.  
Estimate: 125.00 - 150.00



**164 Bicycle Photographs**

Photographs – Lot of 8 pcs. – Various eras.  
Woodbury type of Mr. Webb of the  
Banbury Bicycle Club on a carte de visit.  
The identical image was used in The  
Bicycle Times of Dec. 19, 1898. (Copy of  
page included); Cabinet Card with a racing  
cyclist with some prizes inclusive of a  
trophy with a High Wheel or Penny  
Farthing bicycle on top. Taken by A. J.  
Eustace of 98 Oxford St. in Reading,  
England; Cabinet Card of 2 High Wheel era  
cyclists dressed in their riding outfits.  
Taken circa 1885 by George M. Bolton of  
Rockville, Conn. The Rockville Bi. Club  
formed in 1884., Cabinet Card of a Hard  
tired Cross frame safety ca 1888.  
Photograph is by Hastings from Iowa Falls,  
Iowa; 2 cabinet cards of a race at a track.  
One being the start and the other the finish.  
GENDRON bicycle logo on stand.  
Advertising for SMITH & DIXON PIANO.  
Smith & Dixon Piano Co. were in Cincinnati,



**29th Annual Bicycle Auction 6/26/2021**

Ohio which conforms with the Gendron advertising as well. Taken circa 1894; Cabinet Card of Two men wearing their cycling outfit with pneumatic safetys. Taken in Hudson, NY by Sullivan Bros. Circa 1893.; Outside Tintype of a Lady Cyclist Paper housed in the original paper sleeve which is 3-1/8 x 4-3/4". Circa 1896. Conditions vary.  
Estimate: 100.00 - 150.00

**165 Wrights Bicycle Saddle**

Wrights 3 spring bicycle saddle. Good condition. Estimate: 50.00 - 75.00



**165a Early Litho Child's Cups**

Lot (2) early bicycle motif child's cups and pitcher. Tallest 2 3/4" Ht.. Fair condition. Estimate: 50.00 - 75.00



**166 Bicycle Press Photographs**

Lot of PRESS Photographs. 24 various. Smallest is 7" x 5". Largest is 8" x 10". Earliest date is Sept. 21, 1935. Seven undated. Last is Jan. 26, 1976. A ca 1930s flapper lady assisting a soldier, two men holding a part of the front of a high wheel, A Velocipede and three Australian racing cyclists traveling on a ship. One on rollers. Many from the Cleveland Press of Cleveland Ohio. Some of the noted photographers are included with their bio. The named photographers are Bill Nehez, Paul Tepley, Herman Seid, Glenn Zahn, and James Thomas. Other later examples from CBS Television Network Press Information. Very good overall. Estimate: 75.00 - 150.00



**167 Armstrong Look Bicycle**

Armstrong Look 23" men's bicycle. Shimano accessories. Condor Miche Strada rims. 16 speed. Good condition. From the collection of award winning actor Anthony LaPaglia. Estimate: 300.00 - 400.00



**168 Early Photograph Collage of Racers**

Early framed photograph collage of racers, early 1900's. Frame overall 19 1/2" x 23 1/2". Good condition. Estimate: 50.00 - 100.00



**168a Bicycle Sign**

Decorative Reverse glass painted bicycle trade sign "WAVERLY / HALF NICKEL / FRONT FORK". Good condition. 25 1/2" x 20". Estimate: 300.00 - 400.00



**169 Early Wheels Lot**

Lot (3) Campagnolo low flange wheels. (2) front, (1) rear tubular. Good condition. Estimate: 50.00 - 75.00



**170 Porcelain Inkwell**

Early porcelain inkwell on wooden base. Cats on High Wheel bicycles. Chip left side. 8" W.. Estimate: 50.00 - 75.00



**170a Book Lot**

Lot (4) early and vintage books including composition book with High Wheel, Notebook with High Wheel cover, "ENGINE WHISTLES" and "THE MERRY WHEELERS". Fair condition. Estimate: 25.00 - 35.00



**171 Sheet Music Lot**

Sheet music lot including "THE WHITE FLYER", "UPATRE MARCH" and "THE NEVEROUT/ MUSICAL SOUVENIR OF THE CYCLISTS NATIONAL GRAND MARCH". Good condition. Estimate: 150.00 - 200.00





**29th Annual Bicycle Auction 6/26/2021**

**LOT #**

**172 Early Columbia Bicycle Calendars**

Early Columbia bicycle calendars, 1886 and 1887. 9 1/4" x 10 1/2" and 11" x 9". Features high wheels and tricycles. Good condition. Slight corner losses. Estimate: 75.00 - 100.00



**173 19th c. Wooden Painted Velocipede**

19th c. Velocipede, New England, large rear wheels with wooden spokes and iron banding, seat with seven spindles and back rest, smaller front wheel on post with turned foot rests, and upright levers for propulsion, painted green with yellow striping, the wheels painted yellow. 23" rear wheels. Approx. 43" L.. Small re-glued piece, otherwise nice original condition. Estimate: 700.00 - 900.00



**174 A. S. Gillot Men's Bicycle**

A. S. Gillot 24" men's lightweight bicycle. No pedals or tires. Lohmann saddle. Sturmey Archer brake. Serial number 58477. Good condition. From the collection of award winning actor Anthony LaPaglia. Estimate: 300.00 - 400.00



**175 1979 Morini Pacer Moped**

1979 Morini PACER Moped, Made in Italy, Complete with paperwork. As found condition, motor turns Estimate: 150.00 - 200.00



**175a Set of Bicycle Bottles**

Set of (5) multi-colored bicycle bottles. Clevenger Brothers, Clayton N.J.. 7" Ht.. Includes High Wheel, Safety, Star, 10 Speed, Companion. Good condition. Estimate: 50.00 - 75.00



**176 Sheet Music Lot**

Sheet music lot including "CHICAGO CYCLING CLUB MARCH", "NEW YORK AND CONEY ISLAND / CYCLE MARCH / Two-Step" and "TO THE L.A.W. / SCORCHER/ MARCH / AND / TWO-STEP". Good condition. Estimate: 100.00 - 150.00



**177 Early Bicycle Photograph with High Wheels**

Early outdoor group shot photograph with High Wheels (including Star). 10 1/4" x 17". Good condition. Some wear to corners. Estimate: 100.00 - 150.00



**178 Early Automobiles & Cycles Poster**

Large early framed French poster "Georges RICHARD / PARIS / AUTOMOBILES & CYCLES". Artist H. Behel. Frame overall 77 1/2" x 51". Estimate: 800.00 - 1,200.00



**178a (3) Issues of The Wheelmen**

The Wheelmen – 3 sought after issues. Vol. 1, No. 1 from the summer of 1970. Vol. 5, No. 1 from the winter of 1974 & Vol. 5, No. 2 from the summer of 1974. All in very good condition. Estimate: 100.00 - 150.00



**180 Eddy Merckx Men's Bicycle**

Eddy Merckx 25" men's lightweight bicycle. Corsa Extra. Mavic rims. Campagnolo accessories. Serial number G3820. Good condition. From the collection of award winning actor Anthony LaPaglia. Estimate: 500.00 - 600.00



**180a Celluloid Dresser Box**

C. 1890's Celluloid dresser box with cyclist's on lid. 13" x 4" x 3". Fair condition. Estimate: 75.00 - 100.00



**29th Annual Bicycle Auction 6/26/2021**

- 181 Two Ross Stingray Style Bicycle Frames**  
Bicycle Frame Lot: 2 NOS Ross 20"  
stingray style frames Estimate: 50.00 - 75.00



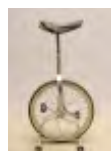
- 182 St. Christopher Medallions**  
St. Christopher Medallion collection.  
Estimate: 100.00 - 150.00



- 183 Bicycle Badge Lot**  
Bicycle Badge lot in black shadow case.  
Estimate: 50.00 - 75.00



- 184 1970 Schwinn Unicycle**  
1970s Schwinn Unicycle. Fair condition  
Estimate: 50.00 - 75.00



- 185 1950's Roadmaster Pleasure Liner**  
1950s Roadmaster Pleasure Liner 26"  
cruiser bicycle. Good condition. Estimate:  
75.00 - 100.00



**185a Bicycle Bottles**

Lot (4) different bicycle motif bottles. Three  
R. Emerson with riders on High Wheels,  
one R. Emmerson stoneware with High  
Wheel rider. Tallest 10 1/2" Ht.. Very minor  
imperfections. Estimate: 50.00 - 75.00



- 186 1940 Dayton / Huffman Cruiser Bicycle**  
1930s Dayton/Huffman 26" ladies cruiser  
bike. Fair original condition. Estimate: 75.00  
- 100.00



- 187 1959 Columbia Tornado Bicycle**  
1959 Columbia Torpedo 26" Ladies deluxe  
cruiser bike with headlight, tank & rack.  
Good original condition including original  
Kelly white wall tires. Estimate: 150.00 -  
200.00



- 188 Late 1930's Roadmaster Speed Master Bicycle**  
Late 1930s Roadmaster Speed Master  
Ladies 26" balloon cruiser bicycle. Fair  
original condition. Delta front-load  
headlight and Period Michigan Whitewall  
tires. Estimate: 150.00 - 200.00



- 189 1970 Raleigh LTD Bicycle**  
1970 Raleigh LTD-3 Men's 3-spd English  
Racer Bike. Good Condition. Sturmey  
Archer coaster brake rear hub. Estimate:  
100.00 - 150.00



- 190 1960's Hermes English Racer Bicycle**  
1960s HERMES Sports 3-speed English  
racer men's bike. fair condition. Estimate:  
75.00 - 100.00



- 190a Figural Safety Rider Ashtray**  
Early cast metal Safety Rider figural  
ashtray. 3 1/2" x 3". Good condition.  
Estimate: 25.00 - 50.00



- 191 Schwinn Bicycle Sign**  
Neon Sign Schwinn from bicycle shop.  
Good condition works great. Estimate:  
100.00 - 150.00



- 191a Set of Framed Bicycle Racer Prints**  
Set of (6) framed bicycle racer prints.  
Includes Nat Butler, Tom Butler (Boston),  
Frank Butler (Boston), George H . Collett,  
New Haven, John S. "Johnny" Johnson,

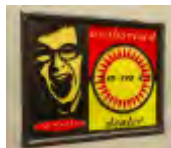


**29th Annual Bicycle Auction 6/26/2021**

Minneapolis, Untitled. Each overall 21" x 16 1/2". Good condition. Estimate: 200.00 - 300.00

**192 Jamis Bicycle Sign**

Illuminated Sign JAMIS from bicycle shop. Good condition works great. Estimate: 75.00 - 100.00



**193 Giant Bicycle Sign**

Neon Sign GIANT from bicycle shop. Good condition works great. Estimate: 100.00 - 150.00



**194 Peugeot Men's Bicycle**

Peugot 22 1/2" men's bicycle. Simplex accessories. Serial number 1758272. No saddle or pedals. 10 speed. Good condition. From the collection of award winning actor Anthony LaPaglia. Estimate: 100.00 - 200.00



**195 1970's Nishiki 10 Speed Bicycle**

Late 1970s Nishiki Custom Sport 10 Speed racing bike Made in Japan. Good condition, Suntour components Estimate: 100.00 - 150.00



**195a Silverplate Engraved Cup**

Early silverplate Meriden engraved cup with High Wheel rider. 3 3/4" Ht.. Good condition. Estimate: 50.00 - 75.00



**196 1920's Pneumatic Safety**

C. 1920's Pneumatic safety bicycle. 18" frame, The Premier Cycle Works Chicago Ill., barn fresh condition. Estimate: 250.00 - 350.00



**197 10 Tubular Bicycle Rims**

Rim Lot: 10 NOS Tubular bicycle Rims for 700C tubular racing tires. 9-Mavic, 1 Campagnolo. Brand New Old Stock. Estimate: 150.00 - 200.00



**197a C. 1900 Crescent Model 32 Pneumatic Safety**

C. 1900 Crescent Model 32 pneumatic safety bicycle. Complete with pedals, tool bag, saddle. 22" frame. Barn fresh condition. Estimate: 250.00 - 350.00



**198 Clown Bicycle Handlebars**

Set of vintage Clown bicycle handlebars. Features horn and (2) mirrors. Good condition. Estimate: 50.00 - 75.00



**199 1950 Rollfast Royal Flyer Deluxe Bicycle**

1950s Rollfast Royal Flyer Deluxe 24" bike with tank, light & rack. Good original condition. Estimate: 150.00 - 200.00



**199a Bicycle Sign**

Reverse glass painted bicycle trade sign "POPE Mfg. / COLUMBIA / BICYCLES...". 20" x 28". Estimate: 300.00 - 400.00



**200 1950 Schwinn Starlet Bicycle**

1950s Schwinn Starlet Ladies 26" Balloon bicycle. Fair/good original condition. Horn tank and 9 hole rack, Good chrome S2 rims. Estimate: 150.00 - 200.00



**200a Bicycle Trophy**

1921 10 Mile Road Race bicycle trophy "Rogers Park Cycle Club". 10 1/2" Ht.. As found. Estimate: 75.00 - 100.00



29th Annual Bicycle Auction 6/26/2021

LOT #

**201 1950's Schwinn Spitfire Bicycle**

1950s Schwinn Spitfire 26" cruiser bike in good original condition. Estimate: 150.00 - 200.00



**201a Bicycle Sign**

Reverse glass painted bicycle trade sign "MONARCH BICYCLE". 28" x 26 1/2". Estimate: 300.00 - 400.00



**202 1950 Schwinn Hornet Bicycle**

1950s Schwinn Hornet Ladies 26" Balloon cruiser bicycle. Good original condition. Rocket Ray headlight & 9 hole rack. Estimate: 150.00 - 200.00



**202a 1977 Colnago Super Bicycle**

1977 Colnago Super bicycle. 25" frame. Full Campagnolo Nuovo record equipped. No pedals. Cinelli saddle. Good condition. Estimate: 300.00 - 400.00



**203 C. 1941 Columbia Sports Tourist Bicycle**

C. 1941 Columbia Sports Tourist Lightweight. Sterling headbadge. Good condition. Estimate: 50.00 - 75.00



**204 Francesco Moser Men's Bicycle**

Francesco Moser 23" lightweight men's bicycle. 12 speed. Mavic rims. Campagnolo accessories. Good condition. From the collection of award winning actor Anthony LaPaglia. Estimate: 300.00 - 400.00



**205 Lowe-10,000 Mile Cyclometer**

Lowe-10,000 Mile Cyclometer. Good condition. Estimate: 300.00 - 400.00



**205a Photo Album Lot**

Lot (2) early photo albums with Cyclist covers. 6 1/2" x 9" and 8 1/2" x 10 1/2". Fair condition. Estimate: 75.00 - 100.00



**206 Ceramic Tray Female Cyclist with Safety Bicycle**

Early ceramic tray, female cyclist with Safety bicycle. 6 1/2" x 6" x 2". Good condition. Estimate: 50.00 - 100.00



**206a Bicycle Saddle**

Saddle suitable for a Hard Tired or early pneumatic safety. Marked on both sides as "Goold Bicycle Co. Ltd." N° 40722 - Patented April 22, 1893. Brantford, Ontario. Top is 13" long x 7-1/2" wide. Spring is 1-3/32" wide. Nickel plated metal parts. Clips under the saddle for a saddle bag. Leather maintains its supple texture. Small tear to leather at side rear, some twist due to some rivets lost at front and other signs of wear. Estimate: 250.00 - 350.00



**207 The Cyclist's Touring Club Copper Sign**

Early copper sign "The Cyclist's Touring Club". 16" x 16". Good condition. Estimate: 200.00 - 300.00



**207a Doulton Pitcher**

Doulton Lambeth Pitcher. Victorian Art Nouveau form made circa 1900. It is 9-1/4" tall. 7-1/2" widest dimension. 3 Cartouches. 1st marked "Military" has 2 Cyclists and another soldier blowing a bugle. 2nd marked "Road" has two men and a lady on cycles. The 3rd is marked "Path" and has 3 racing cyclists. Marked "England" in base. Very good overall condition. Estimate: 400.00 - 500.00





**29th Annual Bicycle Auction 6/26/2021**

**208 Framed High Wheel Plaque**

Early framed High Wheel cast metal plaque. Riders with Tricycle and High Wheels. Sight 6 3/4" x 9 1/2". Good condition. Estimate: 150.00 - 200.00



**209 C. 1960's Murray Sky Master Bicycle**

C. 1960's Murray Sky Master boy's bicycle. As found. Estimate: 75.00 - 100.00



**209a C. 1896 Glass Pitcher with Female Safety Rider**

Glass pitcher of a Victorian Lady Cyclist. Commonly called "Bicycle Girl" has two panels of a lady riding with her feet resting on foot rests near the fork crown. Each panel has the lady riding in the opposite direction. Pressed pattern glass made by Dalzell, Gilmore & Leighton Co. of Findlay, Ohio. 10-7/8" tall x 7-1/2" widest. Made circa 1895. Illustrated in The Standard Encyclopedia Of Pressed Glass – 1860 to 1930, 4th Edition by Bill Edwards and Mike Carwile. Small chip to base. Other distress. Good overall. Estimate: 150.00 - 250.00



**210 Specialized Black Armstrong Men's Bicycle**

Specialized Black Armstrong men's 20 1/2 bicycle. Shimano cranks. Condor Michel Strada rims. Grand Prix 4000 tires. Avatar 143 saddle. Serial number P5022177. Good condition. From the collection of award winning actor Anthony LaPaglia. Estimate: 300.00 - 400.00



**210a Wolff-American Paperweight**

Early Wolff-American paperweight. 4" x 2 1/2". Fair condition. Estimate: 40.00 - 60.00



**211 Vintage Original Once Team Look Bicycle**

Vintage Original Once Team Look bicycle. Alex Zulle KG196TT prototype. Designed exclusively for Alex Zulle, former Swiss Professional racer. During the 1990's he was among the best cyclist's in the world, taking 2nd in the 1995 and 1999 Tour de France. 23 3/4" carbon frame, full Mavic group set (14 speed), San Marco Conor Sprint Titanio saddle with Campagnolo Brevett Internaz Limit 25 stem. Integrated Ergosystem with Mavic handlebars. Includes water bottle and helmet. Serial number 57 MF 655 D4. Provenance: Purchased in Spain from a collector who bought it from Once Team manager. Estimate: 4,000.00 - 6,000.00



**212 19th c. Lithograph with High Wheels & Tricycles**

19th c. colored lithograph featuring riders on high wheels and tricycle. Marked LRC "Hy Sandham" (Henry Sandham Quebec Canada 1842-1910). Repair at top. Unframed. 22" x 16". Estimate: 200.00 - 300.00



**212a Vintage Chinese Bicycle**

Vintage Chinese bicycle. 22" frame. Good condition. Estimate: 100.00 - 150.00



**213 Rotrax Men's Bicycle**

Rotrax 23" men's lightweight bicycle. The Concours Model. Wolber tires. Good condition. From the collection of award winning actor Anthony LaPaglia. Estimate: 300.00 - 400.00



**213a Nutley Velodrome Race Programs**

(3) Race Programs from the NUTLEY VELODROME of Newark, New Jersey – Frank Kramer (Referee). All 1935. Sunday May 5th with Martin Journey on the cover.; Sunday June 9th with Cecil Walker on the cover; Wednesday June 12th with Franz Duelberg on the cover. Mainly bicycle races but they all include



**29th Annual Bicycle Auction 6/26/2021**

Motor-Paced Team races. Some of the listed riders of note: George Dempsey, Torchy Peden, Charlie Ritter, Fred Spencer, P. Van Ness, Bobby & Jimmy Walthour. Size is 7" x 11" printed on a hard paperboard. Each opens to 4 pages. Very good overall.  
Estimate: 50.00 - 75.00

**214 L. A. W. Lot**

Lot (10) L. A. W. pinbacks, medallions, ribbons, buttons etc.. Case included. Good condition. Estimate: 150.00 - 200.00



**214a Columbia Pneumatic Safety Bicycle**

C. 1920 Columbia wood rim pneumatic safety bicycle. Rear rack, noise maker. Good condition. Estimate: 200.00 - 300.00



**215 Powell And Hanmer Bicycle Candle Lamp**

Powell and Hanmer Oracle bicycle candle lamp. Scarce NOS condition with original box. Box fair condition. Estimate: 300.00 - 400.00



**215a Leather High Wheel Pouch**

Leather embossed High Wheel pouch. 7 1/2" L.. Estimate: 75.00 - 100.00



**216 Misc. Lot**

Misc. lot including High Wheel form card holder, button, medals. (7) items. Includes Iver Johnson, Hart Cycle Co., Bartholomay Rochester, Veloz-Club, 3rd Prize Mileage Competition / Paul Thomas". Good condition. Case included. Estimate: 100.00 - 150.00



**216a Bicycle Signal Horn**

Horn – 2 valve Signal Horn – 9-1/4" long x 3-3/4" tall x 1-1/2" wide. Brass with nickel mount piece. Leather thong at eyelets. 19th or 20th Century. Very good overall.  
Estimate: 100.00 - 150.00



**217 C. 1890's Glass Pitcher with Safety Cyclist's**

C. 1890's glass pitcher with Safety Cyclist's. 11" Ht.. Estimate: 200.00 - 300.00



**218 Bicycle Fobs Lot**

Lot (3) bicycle fobs. Includes watch case in Riker mount. Good condition. Case included. Estimate: 150.00 - 250.00



**219 1899 Cyclist's Touring Club Gazette**

1899 Cyclist's Touring Club Gazette. 678 pages. Good condition. Estimate: 75.00 - 100.00



**219a Book: Cycling (H. H. Griffin)**

Book: Cycling (H. H. Griffin), C. 1890, Frederick A. Stokes Company. Good condition.  
Estimate: 25.00 - 35.00



**220 Bicycle Catalogs**

Lot (4) early bicycle catalogs including "1892 Remington Safety", "Tourist Cycles / Geo. R. Bidwell", "Perfection Cycles", "The Liberty". Fair-Good condition. Estimate: 100.00 - 200.00



**220a Bicycle Trophy**

1916 10 Mile Road Race bicycle trophy "Belgian American Cycle Assn...". 10 1/2" Ht.. Good condition. Estimate: 100.00 - 150.00



**29th Annual Bicycle Auction 6/26/2021****221 Armstrong Men's Bicycle**

Armstrong 22" men's bicycle. Campagnolo crank. 16 speed. Serial number U13193. Good condition. From the collection of award winning actor Anthony LaPaglia. Estimate: 300.00 - 400.00

**225 Corlis Training Book**

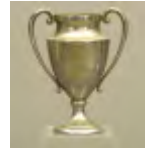
1884 London booklet "PRINCIPLES Of / Training / For / Amateur Athletes". Fair condition. Estimate: 50.00 - 75.00

**222 Bicycle Catalogs**

Lot (3) early bicycle catalogs. Includes "1892 Gendron Iron Wheel Company", "Chas. F. Stokes MFG. Co. / Chicago", "Second-Hand List. / The Eagle Bicycle MFG. Co., Torrington Conn.". Fair-Good condition. Estimate: 100.00 - 200.00

**225a Bicycle Trophy**

1926 One Mile Race bicycle trophy. Won by A. Mezzaroba. 9" Ht.. Good condition. Estimate: 100.00 - 150.00

**222a Motorcycling And Bicycling Magazine**

Motorcycling and Bicycling magazine. Oct. 2, 1916. Size is 9" x 12". 56 Ppgs, + covers. Rollfast, Harley Davidson, Motorcycle Military Co. of Los Angeles, Rollfast, Davis Sewing Machine's Dayton, Smith Motor Wheel, Henderson, Cyclemotor Corporation, Excelsior, Westfield and many others. Some signs of wear. Very good overall. Estimate: 50.00 - 75.00

**226 C. 1895 Statue of Female on Safety Bicycle**

C. 1895 statue of Female on Safety bicycle. 5" x 5 1/2". Good condition. Estimate: 100.00 - 200.00

**227 Reynold's Chain Cleaner**

Early Reynold's chain cleaner. Good condition. Estimate: 100.00 - 150.00

**227a Bicycle Photograph Lot**

Photographs of Male Cyclists – 10 examples from the 19th century. American and English. 3 portrait format Cabinet Cards. One each from Middletown, Ohio, London England with bulb horn and rod brakes & Butler Indiana with two men and one machine; 3 landscape format Cabinet Cards. One each with a Cross framed Hard Tired safety in front of house with another man at the iron gate, studio shot with a man on a bench behind his bike taken in Hudson New York and a Man on a path in the countryside. 3 landscape format mid-sized photos sized between a carte de visite and a cabinet card. One each with a man in the woods with a pipe in his mouth; three bikes and two riders shown at Stonehenge; and a cyanotype of a man on his bike at the side of a barn with two friends. Tintype with two riders with safeties. Conditions vary but generally very good.



Estimate: 125.00 - 150.00

**223 Bicycle Catalogs**

Lot (4) early bicycle catalogs including "KENWOOD", "1892 Marshall Cycle Works", "The Toledo Bicycle Co.". Fair-Good condition. Estimate: 100.00 - 200.00

**224 Bicycle Catalogs**

Lot (2) early bicycle catalogs including "1892 Gormully & Jeffery / American Rambler Bicycles" and "Victor Bicycles / Overman Wheel Co.". Fair-Good condition. Estimate: 100.00 - 200.00



29th Annual Bicycle Auction 6/26/2021

LOT #

**228 Early Bicycle Ephemera**

Lot of early bicycle ephemera. Featuring a variety of early newspapers mentioning Hobby Horses and Velocipedes. Interesting Historical group. Estimate: 200.00 - 300.00



**229 Early Figural High Wheel Clock**

Early figural metal High Wheel with rider clock. 9 1/2" Ht.. Estimate: 200.00 - 300.00



**229a Bicycle Photograph Lot**

Photographs of Lady Cyclists – 6 examples from the 19th century. American. All albumen images. Examples from Cleveland Ohio and another from Haverhill, Mass. Lady with Leg o Mutton sleeves and cap identified on the reverse as Nettie M. Wardell – Oct. 1896; cyclist riding her bike on a rural road (unmounted photograph); Man holding a lady mounted on her wheel with a plunger brake; Lady on a tricycle from Wellington PA identified on the reverse as Elizabeth Schieffelin. Five are cabinet cards and one is not mounted. All Victorian from the 1890s. Very good condition overall. Estimate: 100.00 - 125.00



**230 Early Bicycle Lock**

C. 1895 wall of floor bicycle lock holder. Cast iron. Scarce form. Comes with copy of ad. 7" x 4" x 3 1/2". Good condition. Estimate: 100.00 - 200.00



**230a Bicycle Stein**

German stoneware bicycle stein with High Wheels. Pewter lid. 7" Ht.. Good condition. Estimate: 75.00 - 100.00



**231 1896 Wiederer Mirror**

C. 1896 Wiederer tandem and safety mirror. Glass removable. 13" x 12". Estimate: 200.00 - 300.00



**232 C. 1885 Ceramic Jar with High Wheels**

C. 1885 ceramic jar with High Wheels. Stamped underside. 4" D., 4" Ht.. Estimate: 50.00 - 75.00



**233 High Wheel Pin Lot**

Lot including high wheel pin (wheel separated), high wheel token and medal. Good condition aside from noted. Estimate: 50.00 - 75.00



**234 NOS 1895 Bicycle Hat Brim**

NOS 1895 Bicycle Hat Brim in original container. Comes with copy of patent. Good condition. Estimate: 75.00 - 100.00



**235 Silverplate Inkwell with Safety Rider**

Early silverplate inkwell with safety rider. Ex: Preston Bassett Collection, Abbot Bassett's nephew. 11 1/2" x 7" x 7". Missing one glass ink holder. Good condition. Estimate: 300.00 - 400.00



**236 Springfield Tournament Lot**

Lot (5) Springfield Tournament items including postcard, buttons, token. Good condition. Case not included. Estimate: 100.00 - 150.00



**236a 1880's Wheel World & The Cyclist Journals**

Journals (an important set) – 1880 to 1882. Bound hard bound set Volumes I thru V of THE WHEEL WORLD & the important THE CYCLIST AND WHEEL WORLD ANNUAL for 1882. The Wheel World is





**29th Annual Bicycle Auction 6/26/2021**

identified on the frontis as "A BICYCLING & TRICYCLING ILLUSTRATED Monthly Magazine of Sport. Edited by Lacy Hillier and Harry Etherington. London (England) - Fleet Street. These published beginning with No. 1 Vol. 1 of May 1880 to No. 30 Vol. 5 for October 1882. All contemporary bindings in very good condition. Covers are 5-1/2" x 8-1/4". Fully indexed. First bound volume has over 900 pages. Second bound volume has over 830 pages. Important: Includes THE CYCLIST and WHEEL WORLD ANNUAL for 1882. Edited by C. W. Nairn & Henry Sturmey. Almost 300 pages (count included with the 830 pgs. Third bound volume No. 25 Vol. V to No. 30 has 280 pages. In total over 2,000 pages. Indexes, product engravings with reports, cartoons, club news and goings on, races and racers, what is happening in other countries (USA, India etc.), Shows, Patent information, Games and Puzzles, manufacturer's advertisements, stories and poetry, lots of Tricycling including Queen Victoria (pg 169 Vol. II), Club information and drawings of badges, Bicycle Touring Club, Cycling and the Law, all kinds of Accessories and componentry illustrated and described, and so very much more (even has an old Hobby Horse print illustrated). These important volumes are also found in the Smithsonian Institution collection. Very good condition. Estimate: 1,000.00 - 1,500.00

**237 Apex Pneumatic Safety Men's Bicycle**

C. 1900's Apex men's pneumatic safety bicycle. Kelly handlebars, Ideal saddle. Good condition. Estimate: 400.00 - 600.00

**238 Early Lap Robe with Female Safety Rider**

Early lap robe with female safety rider. Artwork in style of Will Bradley. 52" x 55". Good condition. Estimate: 100.00 - 150.00

**238a Cyclists Touring Club Certificates**

CTC Certificates. Two examples. One with 2 Patterson vignettes issued by the Portsmouth Section of the CTC presented to K. Marshall for a 100 Mile run on May 14th, 1950. Original signatures. Size is 12-1/4" x 9-7/8"; Second example is a certificate listing King George V (king from 1910-1936) as Patron. This the Appointment presented to C. T. Ganett of Vectis, Barrack Rd., Christchurch, Hampshire for his being "officially appointed by the CYCLISTS' TOURING CLUB subject to the terms of the Agreement." Circa 1920's. Size is 11-5/8" x 9". Two holes with metal gussets for hanging. Reinforced fold to the back. England. Conditions vary. Estimate: 50.00 - 75.00

**239 Rare Gene Autry Boys Bicycle**

Rare Gene Autry boys bicycle. Made by Monark. Cast horse head. Original condition. First one offered at Copake Auction. Estimate: 800.00 - 1,200.00

**240 Masi Men's Bicycle**

Masi Gran Criterium men's 24 1/2" lightweight bicycle. Serial number MC62. Campagnolo accessories. Mavic rims. Good condition. From the collection of award winning actor Anthony LaPaglia. Estimate: 800.00 - 1,000.00

**241 Harley-Davidson Tin Sign**

Harley-Davidson tin sign. Estate of Lucky T.. 23 1/2" x 17 1/2". Good condition. Estimate: 200.00 - 300.00

**242 Bicycle Pinbacks, Ribbons Lot**

Lot (10) various bicycle pinbacks, button, ribbons, etc. Includes Keating, 1901 Ravenswood Annual Meet, Cleveland, Safety silverplate plaque etc.. Good condition. Case included. Estimate: 100.00 - 150.00



**29th Annual Bicycle Auction 6/26/2021**

**243 Two White Bicycles Catalogs**

Lot (2) White Bicycles catalogs. White Sewing Machine Co., Cleveland Ohio. Fair condition. Estimate: 100.00 - 150.00



**246 Specialized Allez Men's Bicycle**

Specialized Allez men's 24 1/2" lightweight bicycle. Mavic rims. Shimano crank. 14 speed. Serial number PM234589. Good condition. From the collection of award winning actor Anthony LaPaglia. Estimate: 200.00 - 300.00



**243a Bicycle Tintype, Victor Hard Tire Safety**

Photograph – Tintype or Ferrottype - Victor Hard Tired Safety circa 1888. Spring front fork. Size is (1/6th plate) 2-1/2" x 3-3/8". Very good condition. American. Estimate: 50.00 - 75.00



**246a High Wheel Bicycle Photograph**

Photograph of a High Wheel cyclist. Cabinet Card 4-3/8" x 6-1/2". Hub Lamp on an open head Ordinary with straight handlebars. Rider is in a racing uniform. Studio photo with a beach scene in the background. No photographer's identification. Some signs of wear. Good overall. Estimate: 100.00 - 150.00



**244 Bicycle Ephemera Lot**

Lot (4) C. 1890-98 bicycle magazines and pamphlets. Includes 1898 The Cycling Courier, Official Programme / Second / Annual Tournament / Narragansett Park, 1890, 1894 Iowa Division Wheelmen, The Cycling West (1892). Good condition. Estimate: 100.00 - 150.00



**247 Bicycle Ephemera Lot**

Lot (4) pieces of ephemera including 1897 The Wheelwoman, Wheel Talk, 1895 The Lady Cyclist, Cycling for Ladies. Good condition. Estimate: 75.00 - 100.00



**244a High Wheel Bicycle Photograph**

Photograph of a youth with a High Wheel. Open head. Identified in pencil on the reverse as "Virgil Palmer". Great pose. Circa 1887. Studio image on a Cabinet Card. Size is 4-1/4" x 6-1/2". Photographer is Charles L. Ross of Willimantic, Conn. Very Good condition. Estimate: 100.00 - 125.00



**247a Early Rambler Bicycles Calendar**

Advertising Celluloid Calendar for 1895 promoting the Gormully & Jeffery Mfrg. Co. – Rambler Bicycles and G & J Double Tube Tires. Celluloid disc is 2" diameter. Lists Chicago, Boston, New York, Washington, Brooklyn, Detroit and Coventry England. Uncommon and an exceptional small advertising calendar in its own right. Very good overall condition. Estimate: 75.00 - 100.00



**245 Good Roads & Cyclist Magazines**

Six Good Roads & Cyclist magazines. Rare Oregon publication. Good condition. Estimate: 100.00 - 150.00



**245a Cyclist's Horn**

Cyclist's horn. 10" L.. Good condition. Estimate: 50.00 - 75.00



**248 Bicycle Ephemera Lot**

Lot (4) early bicycle catalogs including 1896 Rouse Hazard Cycles, 1900 Orient, 1892 Elliott's Old Hickory (scarce), True INwardness. Good condition. Estimate: 100.00 - 150.00



**29th Annual Bicycle Auction 6/26/2021****LOT #****248a Bicycle Medals Lot**

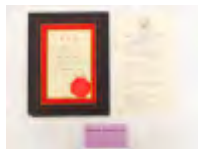
Medals and tokens – 6 various.; NORTH AMERICAN BICYCLE CHAMPIONSHIP for 1955 held in Vancouver Canada; Poker Chip with a Lady in Bloomers on a Pneumatic Safety. American circa 1896; Czech medal marked “D. R. B. BEZ PRAG” - 20 KM. – 11. MANNSCHAFT” – Safety Racer surrounded by wreath produced in Stuttgart; Eastbourne Rovers S.C.C.U. member V. Cusdin doing a 12 Hour time trial held on Sept. 2nd 1934 for 196-1/2 miles; Medal awarded to a woman named P. Harris for the ‘Ladies 10’ held on 26 . 8 . 62 by the Hainault R. C. (Road Club) with a winged wheel on the obverse. Gold plated with enamel; and a Medal awarded to R. Starr for the L. R. R. A. (Lincolnshire Road Riding Assn.) 12 Hour Championship. This being for 3rd fastest in 1950. Gold plated with enamel. Very good overall. Estimate: 50.00 - 75.00

**249 Ephemera Lot**

Lot (3) pieces of Walter Nillson ephemera, along with The Art of Bicycle Riding pamphlet, Hutchinson / Pneus Velo advertising. Good condition. Estimate: 100.00 - 150.00

**250 Harvard Bicycle Club Lot**

Lot early Harvard Bicycle club material. Includes ticket, 1890 Amateur Race Meet form, 1879 membership frame. Good condition. Estimate: 100.00 - 150.00

**250a Vintage Lamp**

Vintage motion lamp with riders on High Wheels. 6 3/4" x 5 1/4" x 11". Fair condition. Estimate: 75.00 - 100.00

**251 Book: The Fastest Bicycle Rider In The World**

Book: "The Fastest Bicycle Rider In The World" / "An Autobiography of Marshall W. "Major" Taylor". Wormley Publishing Company, Worcester Mass.. Copyright 1928. Good condition. Estimate: 75.00 - 100.00

**252 Early Bicycle Cabinet Cards with Pneumatics**

Lot (6) early pneumatic safety pose cabinet cards. Good condition. 6 1/2" x 4 1/4". Estimate: 100.00 - 150.00

**252a Albert A. Zimmerman Lot**

Zimmerman lot – 3 pieces: Uncut full sheet for a cut out doll of A. A. Zimmerman from the Oct. 20, 1895 Boston Sunday Globe. 8" x 9-1/2". Note his cap is to the right of his bum. The cap is quite often missing or lost when assembled on the cut out examples. Original Post Card of Zimmerman mailed from Paris in 1900. Uncommon to find and exceptional to locate without script on the obverse when postally used.; Photograph of Zimmy from “Collection Felix Potin” size 1-5/8" x 3". All contemporary and of the era. Very good overall. Estimate: 150.00 - 250.00

**253 Bicycle Catalogs**

Lot (6) early bicycle catalogs including 1892 Grand Rapids Cycle Co., The Hartford Cycle Co., The Eclipse Bicycles, 1892 The Moffat, 1892 Tourist Cycles, Niagara Cycles / Buffalo Wheel. Co.. Fair-Good condition. Estimate: 200.00 - 250.00

**254 Cycle Lantern Oil Bottle**

Early glass labeled oil bottle "ELECTRIC / CYCLE LANTERN / OIL". Standard Oil Company. 6 1/2" Ht.. Estimate: 50.00 - 75.00



**29th Annual Bicycle Auction 6/26/2021****LOT #****255 Early Bottle**

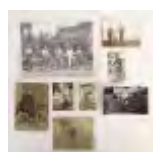
Early bottle with bicycle and camera theme. "A. LARISCHE / KRAKOW". Good condition. 6 1/2" Ht.. Estimate: 50.00 - 75.00

**256 Two Early Bicycle Cups**

Two uncommon early bicycle cups. Both with safety riders. 1 3/4" and 2" D.. Good condition. Estimate: 50.00 - 75.00

**256a Bicycle Photographs**

Photographs of 8 assorted scenes. Mainly 20th century. All unmounted. Large image with a ca 1930s Lady-Man tandem, Man aside a Ladies framed safety, Obese man on a Shaft drive ca 1910 bike, man on a ca 1920 CCM, youth on a ca 1915 Iver Johnson truss frame, and four others. Smallest is 2" x 3-1/2". Largest is 8" x 6-1/4". Very good overall. Estimate: 25.00 - 50.00

**257 1883 Bound Gazette & Large Scale Map**

Lot (2) items including "C.T.C. Monthly Gazette 1883" and "BACON'S LARGE SCALE MAP OF ENGLAND". Good condition. Estimate: 75.00 - 100.00

**258 1896 Folding Basket for Pneumatic Bicycle**

Scarce 1896 folding basket for Pneumatic bicycle. Includes copy of Patent. Good condition. Estimate: 100.00 - 150.00

**259 Bicycle Cabinet Cards**

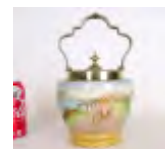
Lot (2) bicycle cabinet cards including Imperial outdoor pose with Safety bicycles (5 1/4" x 8 1/2"), and stereoview "that's a SAFETY" (3 1/2" x 7"). Estimate: 50.00 - 75.00

**260 Cigar Label "ROYAL CYCLISTS"**

Early Cigar label "ROYAL CYCLISTS". Features tandem riders. 6" x 8 1/2". Good condition. Estimate: 50.00 - 75.00

**260a English Porcelain Pot with Cyclist's**

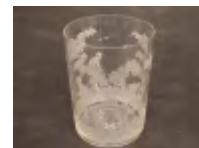
Early English porcelain pot with cyclist's. 10 1/2" Ht.. Good condition. Estimate: 50.00 - 75.00

**261 High Wheel Medal**

1882 Rim engraved High Wheel medal in fitted case. Case overall 3" x 3". Good condition. Estimate: 75.00 - 100.00

**262 Early Etched Glass**

Early etched glass with High Wheel and Safety riders. 2 3/4" D., 3 1/2" Ht.. Good condition. Estimate: 100.00 - 150.00

**263 Cabinet Card & Medal Lot**

Lot including Cabinet card of racer with safety bicycle (Ventura, Cal.), Santa Barbara 1894 medal and Ventura medal. Good condition. Case included. Estimate: 100.00 - 150.00

**263a Pre-War Hawthorne 26" Bicycle**

Pre-War Wards Hawthorne 26" bicycle. Spring front, shifter, two speed hub, brake light. Fair condition. Estimate: 200.00 - 300.00

**264 Early Bicycle Lock in Original Box**

Early bicycle lock in original box. The Perfect Lock Co., Coldwater Michigan. Box. 2 3/4" x 2 1/4" x 2". Estimate: 75.00 - 100.00





29th Annual Bicycle Auction 6/26/2021

LOT #

**265 Bicycle Plaques**

Lot (3) early metal bicycle plaques. Includes winged wheel (8" x 6"), racers (9" x 7 1/4"), man on Safety bicycle (7 1/2" D., marked "Phillips Aldershot". Good condition. Estimate: 100.00 - 150.00



**265a Nickel Plated Candle Bicycle Lamp**

Early nickel plated candle bicycle lamp. 9 1/2" L.. Good condition. Estimate: 100.00 - 150.00



**266 Bicycle Fobs Lot**

Lot (3) early bicycle fobs. Features man posed with Safety bicycle, Safety Rider, High Wheel rider. Longest 8 1/2" L.. Good condition. Case included. Estimate: 75.00 - 100.00



**266a Bicycle Sign**

Reverse glass painted bicycle trade sign "J. REID / BICYCLE / WORKS". 20 1/2" x 16". Good condition. Estimate: 200.00 - 300.00



**267 Schwinn Men's Bicycle**

Schwinn 23 1/2" men's lightweight bicycle. 16 speed. Shimano cranks. Mavic rims. Sattlite saddle. Good condition. Serial number BO52726A. From the collection of award winning actor Anthony LaPaglia. Estimate: 200.00 - 300.00



**267a Bicycle Sign**

Reverse glass painted bicycle trade sign "PIERCE / EST. 1863". 14" x 20". Good condition. Estimate: 200.00 - 300.00



**268 Motorcycle Poster "FAVOR"**

Large early French motorcycle poster "FAVOR / va droit au but" (Paris). Framed. Sight 62 1/2" x 47". Good condition. Estimate: 300.00 - 500.00



**269 Misc. Lot**

Lot (4) items including ladies skirt lifter, ladies chain purse, brooch, silver Maltese star medal "Tonbridge Amateur Bicycle Club 1881". Good condition. Case not included. Estimate: 50.00 - 100.00



**269a Bicycle Sign**

Reverse glass painted bicycle trade sign "GENDRON / BICYCLE". 16" x 13 1/2". Good condition. Estimate: 200.00 - 300.00



**270 English Track Bicycle**

English track lightweight bicycle. 21" frame. Brooks saddle. Vittoria Mondiale tires. Good condition. From the collection of award winning actor Anthony LaPaglia. Estimate: 300.00 - 400.00



**270a Pair Candle Bicycle Lamps**

Pair of early candle bicycle lamps. 9 1/2" Ht.. Good condition. Estimate: 100.00 - 150.00



**271 Soens Triplet Bicycle**

C. 1980's Soens triplet bicycle. Built in Britain upon design of Bill Whitcomb for the Soens Brothers bike shop in Liverpool using special Reynolds 531 tandem specific tubing including two ovalized bottom tubes linking the three bottom brackets. Equipped with top of the line equipment for the day: 48 hold Phil Wood hubs with Shimano disc brakes front and rear. The Shimano brakes supplemented by Mafac Tandem Cantilever brakes front and back. Campagnolo front and rear derailleurs (Rally wide range rear derailleur, Record front derailleur). TA



**29th Annual Bicycle Auction 6/26/2021**

chainsets in all three positions. Cinelli drop bars front and rear, flat bars in the middle position. Also included is a kiddie conversion kit that will allow for one of the positions to ride with a small child (the middle position is most indicated for the kiddie conversion). Estimate: 1,000.00 - 1,500.00

**272 BSA Men's Bicycle**

BSA men's 22 1/2" lightweight track bicycle. Wooden rims. Good condition. From the collection of award winning actor Anthony LaPaglia. Estimate: 300.00 - 400.00

**272a 1897 New England Cycle Show Catalog**

New England Cycle Show Catalog held in Boston from Feb. 20 to 27th 1897. Man and lady on a Tandem bike illustrated on the cover. 6-1/2" x 8-7/8" Contains 88 printed pages + covers. Tons of illustrations and advertisements. Examples include Fonda's Home Trainer, Corbin Bells, 20th Century Lamps, Vulcanizing Lamp (an oil lamp with a Tire Vulcanizing attachment), Veeder Cyclometers, Hub King Bicycles, Fowler Cycle, Remington (Arms Co.) Bicycles, Eagle Bicycles, Racycle, New Mail, Overman and so much more. Daily Programs + illustrated photos of many great bicycle racers of the day. To name a few Bald, Butler, John S. Johnson and Sanger. Huge list of Exhibitors. Some L.A.W. Details of the Bands which were playing and their schedules. American. Not commonly found. Some stain and minor signs of use. Very good overall. Estimate: 100.00 - 150.00

**273 C. 1940's Soncini Roadster Bicycle**

C. 1940's Soncini Roadster bicycle. Builder from Parma Italy. This was the personal bicycle of the frame builder. Features Lucchini indexed shifter derailleur. There are 4 detents on the seat stay mounted shifter corresponding to the 4 gears. This pre-dates the more commonly-known indexed shifting of the 80's onward by close to 40 years. Chain protected by wire



custom case. Brass mudguards. Brake calipers are perhaps unique and are designed for use with the uncommon alloy Westwood-type Ambrosio rims which are built onto SIAMT alloy large-flange hubs, which are fitted with Campagnolo quick release axles. Front hub is one piece alloy hub, rear has alloy flanges fitted to the steel center. Rear dropouts are precursors for those now used on high-end custom bicycles. Comes with original period lock with key on the rear. Good condition. Estimate: 2,000.00 - 2,500.00

**274 George Longstaff Racing Trike**

George Longstaff racing trike. Early 1990's. George Longstaff built trikes from 1982 until his death in 2003. Trike has been built up with a selection of components including Modolo Twin 777 combo adjustable bars and stem (stem can be adjusted in length and the bars in width), Columbus sea post with Ideale titanium-railed saddle, Campagnolo front and rear derailleurs, combination of Paul cantilever and Universale side pull brakes calipers activated by Shimano levers. Mavic front wheel with rear wheels built by using Super Champion Gentleman rims, Omega Mistral chains and bottom bracket, Miche pedals. Good condition. Estimate: 1,000.00 - 1,500.00

**275 Giovanni Gerbi Racing Bicycle**

Late 1940's Giovanni Gerbi racing bicycle. Original paint, logo and badges. Equipped with Campagnolo cambio corsa derailleur system. Giovanni was a well-known racer in the early 1900's and was known as "Red Devil" or "Diavallo Rosso", because of his red jerseys. Note badge logo on head tube. Note first Campagnolo derailleur. Good condition. Estimate: 1,000.00 - 1,500.00



29th Annual Bicycle Auction 6/26/2021

LOT #

**275a New Departure Bicycle Lamp Box**

The 1898 Model New Departure bicycle lamp box. 4 1/2" x 6 1/2" x 5". Fair condition. Estimate: 50.00 - 75.00



**276 2000 De Rosa Merak Bicycle**

2000 De Rosa Merak custom-built bicycle. Used for the 2000 pro season by Roberto Conti of the Vini Caldirola-Sidermec-Seride pro team. Original condition. Features first generation Carbon 10 Campagnolo components. Estimate: 1,200.00 - 1,500.00



**277 C. 1880's Otto Style Youth High Wheel Bicycle**

C. 1880's Otto style youth High Wheel bicycle. 36" front wheel. Good condition. Estimate: 800.00 - 1,200.00



**278 Yale Youth Pneumatic Safety**

Early Yale youth pneumatic safety bicycle. As found. Estimate: 75.00 - 100.00



**279 Dog Scarer Pistol**

Early dog scarer pistol. 4 1/2" L.. Good condition. Estimate: 75.00 - 100.00



**280 Early Brass Bicycle Lock**

Early brass bicycle lock. Good condition. Estimate: 50.00 - 75.00



**281 Cyclist's Bugle**

Early Cyclist's bugle. 5 1/4" L.. Estimate: 75.00 - 100.00



**282 Bicycle Signal Horn**

Early Kohler bicycle signal horn. 5 1/2" L.. Various markings including "London 1851 / 1862". Good condition. Estimate: 100.00 - 150.00



**283 1892 Combo Lock**

1892 combo lock with original box. Box as is, otherwise good shape. Case not included. Estimate: 100.00 - 150.00



**284 Misc. Lot**

Lot including rare bell top, embossed bell with female on safety bicycle and horn part. Good condition. Case not included. Estimate: 50.00 - 75.00



**285 Stevensgraph**

Early Stevensgraph "The Last Lap" with High Wheel riders. Overall 6" x 8 3/4". Good condition. Estimate: 100.00 - 150.00



**285a Safety Rider Chocolate Mold**

Safety rider chocolate mold. 6 1/2" x 6 1/2". Good condition. Estimate: 25.00 - 50.00



**286 Stevensgraph**

Early Stevensgraph "The Last Lap" with Safety riders. Overall 6" x 8". Good condition. Estimate: 100.00 - 150.00



**286a Bicycle Sign**

Reverse glass painted bicycle trade sign "GENDRON / BICYCLE". 15 1/2" x 14". Estimate: 200.00 - 300.00



29th Annual Bicycle Auction 6/26/2021

LOT #

**287 Bicycle Catalogs**

Lot (5) early bicycle catalogs including "Sprinter" (The Luburg Manufacturing Co., Philadelphia), "The New York Bicycle Company", "1892 Western Wheel Works", "Stover MFG Co.", "Lovell Diamond Cycles". Fair-Good condition. Estimate: 200.00 - 300.00



**288 Gino Bartali Men's Bicycle**

Gino Bartali 23 1/2" men's lightweight bicycle. 10 speed. Campagnolo accessories. Good condition. From the collection of award winning actor Anthony LaPaglia. Estimate: 300.00 - 400.00



**289 Bicycle Catalogs**

Lot (6) early bicycle catalogs including "1892 Rochester Bicycles", "1892 Elliott's Old Hickory", "1892 Ames & Frost Company", "New Mail", "1892 Thorsen & Cassady", "1892 Chicago Bicycle Co.". Fair-Good condition. Estimate: 200.00 - 300.00



**289a C. 1950's Japanese Bicycle**

C. 1950's Japanese bicycle. Yamaguchi. 17" frame. Features front light, rear rack. Good condition. Estimate: 100.00 - 150.00



**290 Early Handlebar Mount Bicycle Watch**

Early handlebar mount bicycle watch. New Haven USA. Good condition. Estimate: 150.00 - 200.00



**290a Peter Ompir Tray**

Peter Ompir painted tray with man on boneshaker. 12 1/2" D., 2" Ht.. Estimate: 50.00 - 75.00



**291 Royal Doulton Pitcher**

Early Royal Doulton pitcher with safety bicycle riders. 7 1/2" Ht.. Good condition. Estimate: 150.00 - 200.00



**292 BSA Men's Bicycle**

BSA 22 1/2" men's lightweight bicycle. Royale. Needs saddle. 10 speed. Good condition. From the collection of award winning actor Anthony LaPaglia. Estimate: 75.00 - 100.00



**293 C. 1885 Bronze Paper Clip with High Wheel Rider**

C. 1885 bronze paper clip with High Wheel Rider. 5 1/2" L.. Good condition. Estimate: 100.00 - 150.00



**293a Bicycle Sign**

Decorative Reverse glass painted bicycle trade sign "REMINGTON BICYCLES". 10" x 64". Good condition. Estimate: 300.00 - 400.00



**294 L. A. W. Flask**

Early L. A. W. flask with sterling silver top. 4" x 5". Good condition. Estimate: 150.00 - 200.00



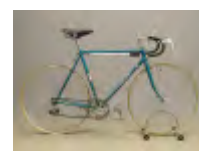
**294a Bicycle Sign**

Decorative Reverse glass painted bicycle trade sign "Monarch Bicycles". 12" x 53". Estimate: 300.00 - 400.00



**295 Wocce Men's Bicycle**

Wocce Russian 22" men's lightweight bicycle. 10 speed. Good condition. From the collection of award winning actor Anthony LaPaglia. Estimate: 150.00 - 250.00





**29th Annual Bicycle Auction 6/26/2021**

**295a Misc. Lot**

Lot including ceramic High Wheel container, early ceramic naughty tray (as found), and "GRAN BY 1880" tobacco jar. Estimate: 25.00 - 50.00



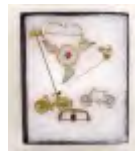
**296 Scarce Christmas Candleholders**

Two scarce early High Wheel form Christmas candleholders. Estimate: 75.00 - 100.00



**297 Pin Lot**

Lot (6) C. 1895 pins with case. Includes winged wheel, safety bicycles, handlebars. Good condition. Case included. Estimate: 100.00 - 150.00



**297a Pre-War Rollfast 26" Bicycle**

Pre-War Rollfast 26" bicycle. Front light, rear rack. Good condition. Estimate: 200.00 - 300.00



**298 C. 1885 Paper Clip with High Wheel**

C. 1885 paper clip with High Wheel. Plated metal. 4 1/2" L.. Estimate: 100.00 - 150.00



**298a Pair Porcelain Bicycle Figurines**

Pair of early porcelain bicycle figurines. As found, damaged. 7" x 8 1/2". Estimate: 25.00 - 50.00



**299 Leather Embossed Cigar Cases**

Lot (2) early leather embossed cigar cases. Features woman with fan on high wheel and man on high wheel. 5" x 4" and 5" x 3 3/4". Good condition. Case included. Estimate: 100.00 - 150.00



**299a Bicycle Sign**

Decorative Reverse glass painted bicycle trade sign "COLUMBIA BICYCLES / The Best in the World". 14 1/4" x 50 1/2". Estimate: 300.00 - 400.00



**300 Vitus Men's Bicycle**

Vitus men's 23" lightweight bicycle. Bontrager rims. Dural forks. Michelin tires. Shimano accessories. Anodized paint. 16 speed. Good condition. From the collection of award winning actor Anthony LaPaglia. Estimate: 200.00 - 300.00



**300a 1886 Star Bicycles Catalog**

Star Bicycles Catalog – This the 2nd edition – 1886 – 34 printed pages + covers. Parts blow ups with pictures and descriptions of the American Star, Semi-Racing Star, Special Star, Pony Star, Racing Star and a picture with text about Star Polo and the Capitol Bi Club of Washington D.C. Lots of pages on Care & Directions for use. Cyclometers, Bells, Lamps, Tool Bags, and a page with priced accessories. 6-1/2" x 9-1/2". Good condition with some signs of use. Estimate: 175.00 - 250.00



**302 Guerciotti Men's Bicycle**

Guerciotti 23 1/2" men's lightweight bicycle. 12 speed. Campagnolo accessories. Hutchinson Nitro tires. Good condition. Serial number 3 58 57 / 13442. Cinelli handlebars. From the collection of award winning actor Anthony LaPaglia. Estimate: 400.00 - 600.00



**302a Bicycle World & Archery Field Magazines**

Bicycling World & Archery Field – 2 issues. (1st) THE definitive contemporary article on Pope Columbia cycles. Volume II Number 21 of April 1, 1881. Probably their most important issue. Contains 10 engravings. Three drawings by J. S. Conant of Boston. Another engraving by



**29th Annual Bicycle Auction 6/26/2021**

person with, what appears to be, the initials "Y.T.N". Talks about the company's inception with Weed Sewing Machine Co. to the current time. 7-1/2 printed pages with 1 only 1/4 plate engraving, 8 only 1/2 plate engravings and 1 full page. Amazing factory images. Lots of text and history. There is much more about cycling aside from this important article. Exceptional issue. Condition is fair with translucent tape over areas of the journal. All prints are complete. (2nd) Volume XIV Number 6 of December 10, 1886. Contains 14 pages including covers. Ads for Overman Wheel Co., New Rapid, Coventry Machinists Co., Singer Cycles, A. W. Gump in Dayton, W. W. Stall for Star bicycles, Stoddard, Lovering & Co for Rudge, Gormully & Jeffery of Chicago, H. B. Smith Machine Co., Pope-Columbia and many others. Club doings, clothing, the race between champions Woodside and Morgan in Minneapolis, racing, bicycle and tricycle construction, the cycle business, amateur and professional riders and tons more. Condition is good overall but disbound. Estimate: 100.00 - 150.00

**304a C. 1848 Booklet "LITTLE BOY'S VELOCIPEDE"**

Velocipede Booklet, THE LITTLE BOY'S VELOCIPEDE by the American Tract Society of New York. Printed in 1848 (not dated). Contains text and an engraving of a youth on a very early "Propeller" lever driven three wheeled velocipede tricycle with a figural horse head at the front. Steering was activated by the feet at the front axle. Propulsion from the levers to the rear shaft. Soft cover 4-3/8" x 2-3/4". 16 pages with three illustrations. Stitched binding. Publication No. 71 of the series. Text as well as the image of the Tricycle. (e.g.: "All the city boys know what I mean; but some of my readers who live in the country may need to be informed that a velocipede is a little wooden horse, something like a rocking horse; but instead of rockers, the velocipede has wheels; and, by turning a crank, a little boy who sits upon the horse can wheel himself along the smooth sidewalk at quite a rapid rate.") This style of velocipede was produced in America during the 1840s to 1860s. Minute signs of use. Very good condition.



Estimate: 125.00 - 200.00

**305a Bicycle Sign**

Decorative Reverse glass painted bicycle trade sign "PIERCE BICYCLES / TRIED and TRUE". 14" x 50". Estimate: 300.00 - 400.00



**307 C. 1950's J. C. Higgins Bicycle**

C. 1950's J. C. Higgins female bicycle. 26". Serial number 43549. Good condition. Estimate: 300.00 - 400.00



**308 1955 Columbia Fire Arrow Bicycle**

1955 Columbia Fire Arrow bicycle. 26". Kelly Whitewall tires. Front light. Serial number A197126. Good condition. Estimate: 200.00 - 300.00



**309 Albert Eisentraut Men's Bicycle**

Albert Eisentraut men's 23" lightweight bicycle. Framed marked Eisentraut / Oakland. 10 speed. Campagnolo accessories. Needs pedals. Brooks saddle. Fiamme rims. E 0404 372. Good condition. From the collection of award winning actor Anthony LaPaglia. Estimate: 800.00 - 1,000.00



**309a The Cycle Referee Bound Volume**

- Book. Bound Volume. The CYCLE REFEREE - A Weekly Record and Review of Cycling and the Cycle Trade - And Trade Journal- which was an American publication is the publisher of this volume printed in London, England for the English market. Starts Vol. 2 #15 from Feb. 17, 1898 and up to part of Vol. 3 #14. Complete with covers from Vol. 2 are #s17 thru 26. Complete with covers from Vol. 3 #1 thru #13. No Covers. Some other distress. Incredible amount of information, ads and graphics. Just to name some of the advertisers: Crawford, Diamond Chain,



**29th Annual Bicycle Auction 6/26/2021**

Bevins, Waltham Cyclometer, Simonds Steel Ball, Waverly Cycles, Cleveland, Shelby Steel Tubes, Christy Saddles, Eclipse Bicycles and tons more. Has the trade and social history well documented. Important journal which is both hardly known in this publication and hardly seen. Lacks front board cover. Condition varies and should be viewed. Sold "as is". Estimate: 250.00 - 400.00

**310 1946 Roadmaster Bicycle**

1946 Roadmaster bicycle. Older restoration. Serial number F64754. 26". Carlisle Whitewall tires. Good condition. Estimate: 400.00 - 500.00



**311 1959 Western Flyer Bicycle**

1959 Western Flyer "Golden Flyer" bicycle. 26". Western Auto's 50th Anniversary. Serial number 96854. Good condition. Estimate: 200.00 - 300.00



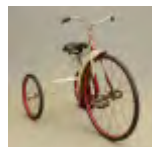
**311a Book: Nauticus In Scotland**

Book. Nauticus in Scotland. A Tricycle Tour of 2,462 Miles. Author, C. E. Reade, uses the pseudonym of Nauticus Hard. Cover with full inset map. 207 ppgs. Undated but published in 1883. Illustrated. Published by Simpkin, Marshall & Co. of London and Iliffe and Son of Coventry. Green board covers embossed with an early Cycling scene. Early full page ad for The Coventry Machinists' Co. Early travelogue through Scotland. With list of Hotels and more useful information. Some loose pages. Wear at spine. Elusive and not commonly found. Loose in binding. Estimate: 200.00 - 300.00



**312 C. 1930's CCM Canadian Tricycle**

C. 1930's CCM Canadian child's tricycle. Red and cream color. Scarce tricycle. Good condition. Estimate: 200.00 - 300.00



**313 Framed Major Taylor Bicycle Racing Photograph**

Framed Major Taylor bicycle racing photograph "Saturday, Final heat, One mile open Professional". Sight 9" x 11 1/2". Good condition. Estimate: 200.00 - 300.00



**314 Framed Pinbacks, Souvenir Spoons, Ribbons**

Framed lot. Includes (2) Souvenir spoons (N.E. Cycle Show Boston 1897, Orient), Comrades Cycle Club ribbon, Good Roads 1907 ribbon, medals including 1902 Century Road Club, 1913 N.J. Division, Inter-City Run, 1883 Bicycle Tournament, 1884 Lynn Cycle Club, Bloom Wheelmen, C.U.A.A. 90, 1909 Baltimore / Washington Wheelmen, pins including National, Spalding, Search Light, "McFARLAND'S BICYCLES", Gendron Bicycle, Monarch, L.A.W. button, pinbacks (38) including Keating, Spalding, Alpha (enameled), Crown Bicycles (enameled), Good Roads, Fisk, Norwood, Stearns, Wolff-American etc.. Good condition. Nice presentation. Frame overall 21 1/2" x 14 1/2". Estimate: 500.00 - 700.00



**315 Fanini Men's Bicycle**

Fanini Record 21 1/2" men's lightweight bicycle. 16 speed. Needs tires. Good condition. From the collection of award winning actor Anthony LaPaglia. Estimate: 200.00 - 300.00



**315a Early Parker Brothers "Bicycle Cards" Game**

Early Parker Brother "Bicycle Cards" game. Lid has children on safety bicycles on lid. 6 1/2" x 5". Fair condition. Estimate: 25.00 - 50.00



**316 Peugeot Men's Bicycle**

Peugot 22 1/2" men's lightweight bicycle. 10 speed. Touring bicycle. Good condition. From the collection of award winning actor Anthony LaPaglia. Estimate: 150.00 - 250.00

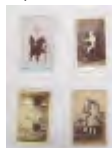


29th Annual Bicycle Auction 6/26/2021

**LOT #**

**317 Four Velocipede Photographs (carte de visites)**

Lot (4) early Velocipede photographs (carte de visites). Good condition. Estimate: 150.00 - 200.00



**318 Bicycle Postcards**

Lot (6) early bicycle related postcards. Includes Safeties, Tandem etc.. Good condition. Estimate: 50.00 - 75.00



**319 Handle Bar Mount Vesta Case Lot**

Lot including handle bar mount Vesta case and Terry pants holder. Good condition. Estimate: 100.00 - 150.00



**320 Cigar Cutters**

Lot (2) early cigar cutters, "Continental Pneumatic / Hannover" and "Wertherim / Sewing-Machine". Good condition. Case not included. Estimate: 100.00 - 150.00



**321 Three High Wheel Lockets**

Lot (3) early High Wheel lockets. (2) hallmarked silver with walking lion. Approx. 3/4" each. Good condition. Case not included. Estimate: 50.00 - 75.00



**322 Uniform Studs with High Wheels**

Lot (4) early uniform studs with High Wheel riders. Good condition. Case not included. Estimate: 100.00 - 150.00



**323 Trick Rider Cabinet Cards**

Lot (2) early trick rider cabinet cards. 6 1/2" x 4 1/4". Good condition. Estimate: 75.00 - 100.00



**324 Puch Men's Bicycle**

Puch 23" men's lightweight bicycle. Kevlar Musseuw rims. Needs seat and crank set up. Good condition. Steel frame. From the collection of award winning actor Anthony LaPaglia. Estimate: 200.00 - 300.00



**325 Misc. Lot**

Lot (4) pieces including Boston 1897 souvenir spoon, Stearns letter opener, pocket knife with tandem riders, fancy Safety bicycle pin. Good condition. Estimate: 100.00 - 150.00



**326 Twelve Bicycle Related Trade & Greeting Cards**

Lot (12) bicycle related trade and greeting cards. Includes tricycles and high wheels. Good condition. Estimate: 50.00 - 75.00



**326a Misc. Lot**

Lot including Cleveland Cycles leather too pouch, pair standard bicycle pedal toe clips, cyclist cup and stand. Good condition. Estimate: 25.00 - 50.00



**327 Vintage Motorcycle Poster**

Vintage 1946 Motorcycle poster "Wall of Mirth". Estate of Lucky T. 21 1/2" x 14". Estimate: 100.00 - 150.00



**328 Trick Rider Ephemera Lot**

Lot (4) pieces of ephemera. Trick riders. Includes post cards, stamps etc... Some autographed (includes Wallenda). Great archive. Good condition. Estimate: 250.00 - 350.00





29th Annual Bicycle Auction 6/26/2021

LOT #

**329 Ten Bicycle Related Trade Cards**

Lot (10) early bicycle related trade cards. Includes man on tricycle. Good condition. Estimate: 75.00 - 100.00



**329a Chief Pontiac Artwork**

Chief Pontiac print by Jerry Farnsworth. Presented to Kohler Pontiac Co., L. W. Ward, General Sales Manager, Pontiac Motor Division. Frame overall 49 1/2" x 34". Fair condition. Estimate: 150.00 - 200.00



**330 Billato Men's Bicycle**

Billato men's 22 1/2" lightweight bicycle. 12 speed. Michelin Dynamic Classic tires. FIR alloy rims. Campagnolo accessories. Good condition. From the collection of award winning actor Anthony LaPaglia. Estimate: 400.00 - 600.00



**331 Pair 28" Wooden Bicycle Rims**

Pair of early 28" bicycle rims. Good condition. Estimate: 100.00 - 150.00



**332 Pair 28" Steel Bicycle Rims**

Pair early steel 28" bicycle rims. Good condition. Estimate: 50.00 - 100.00



**333 Bicycle Chain**

Early 1" skip tooth safety chain. 46" L.. Good condition. Estimate: 50.00 - 100.00



**333a Specialized Mountain Bicycle**

Specialized Mountain bicycle. 20 1/2" frame. Good condition. Estimate: 50.00 - 100.00



**334 Cinelli Land Shark Men's Bicycle**

Cinelli Land Shark men's 24" track lightweight bicycle. Regal saddle. Vittoria Rubino tires. Good condition. From the collection of award winning actor Anthony LaPaglia. Estimate: 400.00 - 500.00



**335 Daisy Bell Bicycle Pitcher**

Early Daisy Bell musical bicycle pitcher. 8" Ht.. Doesn't appear to operate. Otherwise good condition. Estimate: 50.00 - 75.00



**335a Vintage Makeup Case**

Vintage makeup case with mirror. Riders on High Wheels. 5 3/4" x 7 1/2". Good condition. Along with carrying case. Estimate: 50.00 - 75.00



**336 Dog Scarer Pistol**

Early dog scarer pistol. 4 1/4" L.. Estimate: 50.00 - 75.00



**337 Bicycle Hub Lamp**

Bicycle hub oil lamp. 7 1/2" Ht.. Good condition. Estimate: 150.00 - 200.00



**338 Bicycle Saddle**

Brooks bicycle saddle. Good condition. Estimate: 50.00 - 75.00



**339 Columbia Type Pan Saddle**

Columbia type pan saddle. Good condition. Estimate: 50.00 - 75.00



29th Annual Bicycle Auction 6/26/2021

LOT #

**340 Safety Bicycle Brake Lever**

Safety bicycle brake lever. 7/8" diameter clamp. Good condition. Estimate: 50.00 - 75.00



**346 1901 Rambler Model 38 Chainless Bicycle**

1901 Rambler Model 38 chainless pneumatic safety bicycle. Kelly handlebars. Good condition. Estimate: 800.00 - 1,200.00



**341 Collection of Bicycle Photographs**

Collection of (47) bicycle photographs, photo postcards. Includes racers, races, 6 Day, etc.. Good condition. Quality archive. Estimate: 200.00 - 300.00



**347 Early Child's Tricycle**

Early child's tricycle. Chain driven. Nice restored condition. 14 1/2" wheels. Estimate: 200.00 - 300.00



**348 Coaster Craft Scooter**

Early Coaster Craft child's scooter. Good condition. Missing top of bell. Estimate: 200.00 - 300.00



**342 Collection of Bicycle Photographs**

Collection of (42) bicycle related tintypes. Some scarce images including Star, high wheel, boneshaker, various safety poses etc.. Good condition. Quality archive. Estimate: 200.00 - 300.00



**349 Colson Childs Scooter**

Early Colson child's scooter "DISCOOTER". Nice restored condition. Estimate: 200.00 - 300.00



**343 Bicycle Stereoviews**

Collection of (25) early bicycle related stereoviews. Includes humorous, high wheels, safeties. Good condition. Quality archive. Estimate: 200.00 - 300.00



**349a 1947 Huffman 26" Bicycle**

1947 Huffman 26" bicycle. Features front light, rear rack. U. S. Royal Chain tires. Good condition. Estimate: 300.00 - 400.00



**344 Bicycle Trade Cards**

Lo (8) bicycle trade cards. Good condition. Estimate: 50.00 - 75.00



**350 Irish Mail Child's Scooter**

Early child's Irish Mail scooter. Original condition. Estimate: 200.00 - 300.00



**345 Southern Veteran Cycle Club Newsletters**

Archive of bound Southern Veteran Cycle Club newsletters. C. 1959-2019, 60 years of the history of the largest cycle club in the U.K.. Two large portfolios and 18 bound volumes of the newsletters (name changed to Veteran Cycle Club in 1988). Estimate: 150.00 - 250.00



**351 Salsa Men's Mountain Bicycle**

Salsa men's Mountain Bicycle. 20 1/2" frame. Thorr rims. As found. From the collection of award winning actor Anthony LaPaglia. Estimate: 50.00 - 75.00



29th Annual Bicycle Auction 6/26/2021

LOT #

**352 Airflow Tricycle**

Early Airflow tricycle. 20 1/2" front wheel, 12 1/2" rear wheels. Nice restored condition. Estimate: 200.00 - 300.00



**353 Air Flow Tricycle**

Early Bluebird Air Flow tricycle. 16 1/2" front wheel, 8 1/2" rear wheels. Nice restored condition. Estimate: 200.00 - 300.00



**354 Flex Racer Child's Scooter**

Early Flex Racer child's scooter. 41" L.. Nice restored condition. Estimate: 200.00 - 300.00



**355 Iver Johnson Child's Tricycle**

Early Iver Johnson child's tricycle. Features front light, bell, tool bag. Nice restored condition. 16" front wheel, 10 1/2" rear wheels. Estimate: 200.00 - 300.00



**355a Bicycle Clock**

Cast metal bicycle clock, female with safety bicycle. 9" x 11 1/2". Good condition. Estimate: 75.00 - 100.00



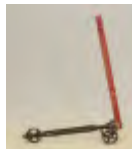
**356 Air Flow Child's Tricycle**

Early Air Flow child's tricycle. Nice restored condition. 12" front wheel, 8 1/2" rear wheels. Estimate: 200.00 - 300.00



**357 Early Child's Scooter**

Early child's scooter "MRS. SHERLOCK'S BREAD". Original condition. Estimate: 200.00 - 300.00



**358 Vintage Aluminum Wagon**

Vintage aluminum pull wagon "GREYHOUND". Fair condition. Estimate: 50.00 - 100.00



**359 Bicycle Rims**

Lot (5) early bicycle rims. (4) wood. Fair condition. Estimate: 75.00 - 100.00



**360 Serotta Men's Bicycle**

Serotta 22 1/2" men's lightweight bicycle. Campagnolo accessories. Mavic rims. Continental Gatorskin tires. 16 speed. Good condition. From the collection of award winning actor Anthony LaPaglia. Estimate: 250.00 - 350.00



**361 NOS New Departure Model "A" Bicycle Hub**

NOS New Departure Model "A" bicycle hub in box. Estimate: 75.00 - 100.00



**362 Bicycle Head Badges**

Collection of (14) bicycle head badges. Includes Thistle, Pathfinder, Rollfast, Keystone etc.. Good condition. Case not included. Estimate: 75.00 - 100.00



**363 Bicycle Head Badges**

Collection of (16) bicycle head badges. Includes Eclipse, Western Union, Premier, Geneva etc.. Good condition. Case not included. Estimate: 75.00 - 100.00



**364 R.O. Harrison Men's Bicycle**

R. O. Harrison men's 22 1/2" Lyta lightweight bicycle. Brooks saddle with tool bag. Fenders. 10 speed. Good condition. From the collection of award winning actor Anthony LaPaglia. Estimate: 300.00 - 400.00



**29th Annual Bicycle Auction 6/26/2021**

**365 Bicycle Lamp**

The Neverout bicycle oil lamp. 6 1/2" Ht..  
Fair condition. Estimate: 50.00 - 75.00



100.00 - 150.00

**366 Rat Trap Bicycle Pedals**

Lot (3) early rat trap bicycle pedals. Fair condition. Estimate: 25.00 - 50.00



**366a Bicycle Race Photograph**

- Photograph. This of a Victorian safety bicycle race. Note the interesting dust plume engulfing the riders at the back of the pack. Some signage, a policeman, buggies and the extensive crowd. 20th century production of a circa 1894 image. Exterior of the frame is 16" x 12-1/2". Estimate: 75.00 - 100.00



**367 Bluebird Bicycle Head Badge**

Bluebird bicycle head badge. Good condition. Estimate: 50.00 - 75.00



**367a Bicycle Photograph, John Keen's Factory**

Photograph. John Keen's bicycle factory and repair shop in Thames Ditton on the Portsmouth Road in England. Pictured are 4 High Wheelers, Pneumatic and Hard Tired (includes 3 cross framed) safeties, and an Olympia pneumatic tandem tricycle. Keen was one of England's most famous and best bicycle racers and manufacturers of the 1870s and early 1880s. He went to America to compete. Pope recognized Keen and his racing prowess on the first famous poster. This photo taken beside the Angel Inn. Signage for his shop included "JOHN KEEN - CYCLE MANUFACTURER - REPAIRER" beside the door, a poster for Hillman, Herbert & Cooper poster as well as a sign for "Home Trainers". This photo was taken from the original glass plate negative. An early to mid-20th century production of a circa 1892 image. See Andrew Ritchie's book King Of The Road page 132-3. Exterior of the frame is 16" x 13". Excellent overall. Estimate:



**368 Austro Daimler Men's Bicycle**

Austro Daimler men's 22 1/2" lightweight bicycle. Super Leicht. Campagnolo accessories. SQ Lab saddle. Good condition. Serial number 6269323. From the collection of award winning actor Anthony LaPaglia. Estimate: 300.00 - 400.00



**369 Bicycle Block Chain**

Bicycle block chain. Good condition. Estimate: 25.00 - 50.00



**369a Eagle High Wheel Print**

Print. Eagle Bicycle Mfg. Co., Stamford Conn. "A Word about High Wheels and Particularly the Eagle." An original advertising print for the Eagle bicycle. Offers their CATALOGUE FREE. Has the perfect engraving of the Eagle's side view. Original antique print from a journal. Exterior of frame is 13-1/2" x 15-3/4". Very good overall condition. Estimate: 75.00 - 125.00



**370 New Departure Cog Tool**

New Departure cog tool. 12" L.. Good condition. Estimate: 50.00 - 75.00



**371 Magni Men's Bicycle**

Magni men's 23" lightweight bicycle. 14 speed. Campagnolo rims and accessories. Good condition. From the collection of award winning actor Anthony LaPaglia. Estimate: 300.00 - 400.00





29th Annual Bicycle Auction 6/26/2021

LOT #

**372 Vintage Bicycle License Plates**

Lot (6) vintage bicycle license plates.  
Includes "BARRE" and (5) Portland. Fair to good condition. Estimate: 250.00 - 350.00



**373 Carlton Men's Bicycle**

Carlton men's 22 1/2" lightweight bicycle.  
Jewel. Fenders. Air pump. Brooks saddle.  
Serial number 932. Good condition. From  
the collection of award winning actor  
Anthony LaPaglia. Estimate: 150.00 - 250.00



**374 Vintage Bicycle License Plates**

Lot (9) vintage bicycle license plates.  
Includes "BARRE", (4) Johnstown and (4)  
Portland. Fair to good condition. Estimate:  
50.00 - 75.00



**375 Bicycle Head Badges**

Lot (16) bicycle head badges. Includes J.C.  
Higgins, Fleet Wing, Western Flyer, Stelber  
etc.. Fair to good condition. Case not  
included. Estimate: 50.00 - 75.00



**376 Rene Herse Men's Bicycle**

Rene Herse men's 24" lightweight bicycle.  
Fenders, lights, air pump. Good condition.  
From the collection of award winning actor  
Anthony LaPaglia. Estimate: 500.00 - 700.00



**377 Vintage Bicycle License Plates**

Lot (8) vintage bicycle license plates.  
Includes (5) Portland, Quincy, Fall River,  
Springfield. Fair to good condition.  
Estimate: 50.00 - 75.00



**378 Vintage Bicycle License Plates**

Lot (12) vintage bicycle license plates.  
Johnstown New York. Fair to good  
condition. Estimate: 50.00 - 75.00



**379 Pinarello Viaes Vera Men's Bicycle**

Pnearello Viaes Vera men's 23 1/2"  
lightweight bicycle. Mavic CXP21 rims.  
Selle Italia Flite saddle. Campagnolo  
accessories. Needs pedals. Good condition.  
From the collection of award winning actor  
Anthony LaPaglia. Estimate: 300.00 - 400.00



**380 Bicycle Block Chain**

Bicycle block chain. Good condition.  
Estimate: 25.00 - 50.00



**381 Tommasini Men's Bicycle**

Tommasini men's 23 1/2" lightweight  
bicycle. Super Prestige. Capagnolo  
accessories. Needs pedals. Good condition.  
From the collection of award winning actor  
Anthony LaPaglia. Estimate: 300.00 - 400.00



**382 Bicycle Parts Lot**

Lot misc. bicycle parts. Estimate: 100.00 -  
150.00



**383 Bicycle Ephemera**

Lot misc. bicycle ephemera including Yale  
Motorcycle cards, New Departure hang  
tags etc.. Good condition. Case not  
included. Estimate: 50.00 - 75.00



**384 Vicini Men's Bicycle**

Vicini men's 22 1/2" lightweight bicycle.  
Campagnolo accessories. Turbo saddle.  
Needs pedals. Good condition. From the  
collection of award winning actor Anthony  
LaPaglia. Estimate: 200.00 - 300.00



**29th Annual Bicycle Auction 6/26/2021**

**385 Century Bicycle Bell Top**

Century bicycle bell top. Fair condition.  
Estimate: 25.00 - 50.00



**390 Vintage Framed Bicycle Ad**

Vintage framed Mead bicycle ad. Frame overall 21" x 18". Estimate: 50.00 - 75.00



**386 Misc. Lot**

Lot including Speedometer box and NOS boxed parts. Estimate: 40.00 - 60.00



**390a Bicycle Ephemera Lot**

EPHEMERA – 15 pieces miscellaneous 19th century items. L.A.W. Bulletin from Aug. 26, 1898 includes a picture, article and death notice for Pope's attorney and LAW founder Charles E. Pratt (incomplete issue); The L.A.W. Bulletin from Aug. 21, 1896 Vol. XXIV # 8; The Bulleting and Goods Roads of March 19, 1897 Vol. XXV #12; 7 high wheel era trade cards, Two uncommon die cuts in the form of a "chainwheel" used as adhesive advertising stamps; Lottery ticket for an 1898 Lady or Gents '98 Light (brand) Bicycle; Thomas Stevens graphic; John Wilkinson Company graphic for Columbia Bicycles. Conditions vary.  
Estimate: 25.00 - 50.00



**387 Torrington Co. Ice-Breaker**

Torrington Co. Ice-Breaker in original box. Good condition. Estimate: 25.00 - 50.00



**388 Delta Battery Can**

Delta battery can with clamps. Good condition. Estimate: 50.00 - 75.00



**389 Bicycle Crank Arm**

Early three position bicycle crank arm for hard tire safety or high wheel. Estimate: 75.00 - 100.00



**391 Bicycle Bell Lot**

Lot misc. early antique bells and parts, tops. Fair to good condition. Estimate: 100.00 - 150.00



**389a Binder with Bicycle Tear Outs**

Collection of Graphics - About 50 sheets - all in 8-1/2" x 11" archival sleeves. Excellent and varied grouping. Generally 1881 to 1900. All pages complete. Monocycles, Water Velocipedes, Water tricycles, Military cycling (many), Men's and Ladies pneumatic safeties, allegorical, racing, social, stories and so much more. Many of the pages have double sided cycling content. Publishers range from Life (19th century), La Nature, Punch and Nouvelles Scientifiques. An instant archive of graphics. Disbound from magazines and journals of the era. An impressive collection that should be viewed. Very good condition overall.  
Estimate: 100.00 - 150.00



**392 Bicycle Tools**

Lot misc. early bicycle tools. Fair to good condition. Estimate: 50.00 - 75.00



**393 Air Flow Child's Tricycle**

Early Air Flow child's tricycle. 12 1/2" front wheel, 8 1/2" rear wheels. Nice restored condition. Some scraping on seat. Estimate: 200.00 - 300.00



**394 Early Child's Scooter**

Early pressed steel child's scooter. Original condition. Estimate: 200.00 - 300.00



**29th Annual Bicycle Auction 6/26/2021**

**395 Early Child's Tricycle**

Early child's tricycle. 8" front wheel, 5" rear wheels. Nice restored condition. Estimate: 200.00 - 300.00



**400 Battaglin Bicycle Frame**

Battaglin bicycle frame. 22 1/2". Sporthuis Hubert. Good condition. From the collection of award winning actor Anthony LaPaglia. Estimate: 50.00 - 75.00



**396 Henley Roll About Scooter**

Early Henley Roll About scooter. Original condition. Estimate: 200.00 - 300.00



**400a Frogs on High Wheels Figurine**

Ceramic Frogs on High Wheels figurine. 9" x 4" x 10". Good condition. Estimate: 25.00 - 50.00



**397 1960's Sears Spaceliner Bicycle**

C. 1960's Sears Spaceliner 26" bicycle. 7 Style. 2 speed hub. Serial number 46922-266246. Good condition. Estimate: 700.00 - 800.00



**401 Legnano Bicycle Frame & Forks**

Legnano bicycle frame, forks and handlebars. 23". Campagnolo accessories. Serial number 144. Good condition. From the collection of award winning actor Anthony LaPaglia. Estimate: 50.00 - 75.00



**398 1960's Roadmaster Jet Pilot Bicycle**

1960's Roadmaster Jet Pilot 26" bicycle. Serial number 1421527. Good condition. Estimate: 300.00 - 400.00



**399 Western Flyer Reissue Balloon Tire Bicycle**

Western Flyer reissue balloon tire bicycle. Special edition. 26". Good condition. Estimate: 200.00 - 300.00



**399a 1938 Schwinn Paramount Bicycle**

1938 Schwinn Paramount bicycle. 23" frame. Per his bicycling journal, Cleveland Ohio in 1946 George Ely Russell purchased a fix gear "Schwinn Paramount Racer, weight 20 pounds", Georges daughter corresponded with Richard at Waterford Bikes via email. He reviewed photos and "chrome-over" serial number. Richard said "I'm thinkink A 184, which would make sense given the stay treatment and lug carving. This would be from 1938-first full season. George was a member of The Cleveland Cycle Club and completed many 200 plus mile hostel biking trips with the club. Good condition. Estimate: 500.00 - 700.00



**401a Book: "THE GALAXY", 1869 Velocipede Bound Volume**

Book. Hard Bound volume. The Galaxy Magazine. Vol. VII from January 1869 to July 1869. Pages 587 to 598 consist of a detailed article titled THE VELOCIPED. Published by Sheldon & Company of 500 Broadway, New York in April 1869 during the height of the Velocipede craze. Gives a history since the Dandy Horse fifty years earlier. Mentions James Carroll of New Haven, Calvin Witty of New York, Patents, the Bennett Velocipede, Witty's Ice Velocipede, Demarest, the Monocycle, a full detailed parts drawing, exercising, Velocipede schools, sport, wagering and tons more. Exceptional contemporary information. Very good condition. Estimate: 75.00 - 125.00



**402 Trek Bicycle Frame & Forks**

Trek bicycle frame, forks, handlebars, saddle. 23" frame. United States Postal Service logo. Good condition. From the collection of award winning actor Anthony LaPaglia. Estimate: 50.00 - 75.00



29th Annual Bicycle Auction 6/26/2021

LOT #

**403 Basso Bicycle Frame & Forks**

Basso Viper bicycle frame, forks, handlebars and saddle. Carbon fiber forks and seat post. 22 1/2". Good condition. From the collection of award winning actor Anthony LaPaglia. Estimate: 50.00 - 75.00



**404 Atala Frame & Forks**

Atala frame and forks. 22 1/2" frame. Good condition. From the collection of award winning actor Anthony LaPaglia. Estimate: 50.00 - 75.00



**405 Moser Frame & Forks**

Moser bicycle frame and forks. 22 1/2". From the collection of award winning actor Anthony LaPaglia. Estimate: 50.00 - 75.00



**405a Bunnykins Dish Set**

Vintage Bunnykins dish set with rabbit cyclist's. Largest 8 3/4" D.. Good condition. Estimate: 50.00 - 75.00



**406 Coppi Men's Bicycle**

Coppi men's 22 1/2" lightweight bicycle. Grand Prix saddle. Needs pedals. Fair condition. From the collection of award winning actor Anthony LaPaglia. Estimate: 250.00 - 350.00



**407 Gazelle Men's Bicycle**

Gazelle Champion Mondial men's 21" lightweight bicycle. Fair condition. From the collection of award winning actor Anthony LaPaglia. Estimate: 250.00 - 350.00



**408 Vitus Bicycle Frame**

Vitus bicycle frame. Carbon fiber. 22 1/2" frame. Good condition. From the collection of award winning actor Anthony LaPaglia. Estimate: 50.00 - 75.00



**409 Raleigh Sports Men's Bicycle**

Raleigh Sports men's 22 1/2" bicycle. Fair condition. From the collection of award winning actor Anthony LaPaglia. Estimate: 50.00 - 75.00



**409a 1882 The Cunningham Company Bicycle Catalog**

Catalog – Cunningham & Co. Catalog– Spring edition of 1882 – Boston. Contains excellent graphics. Has a chart for Harvard, Yale and Shadow bicycles which can be made to custom order. Other bicycles include English makes such as Matchless, Stanley & Timberlake. Regular models of Harvard tricycles available as well as a Sociable and Tandem. Includes a list of about 150 stores distributing their products in various cities within the USA. Various accessories available such as the "Cradle" spring & Nash rubber grips are featured. Such well known accessories as the Challis's Stop Bell, Lucas hub lamps including King Of the Road, Hill & Tolman's Automatic bell, Buglets, Excelsior & Thompson's cyclometers, Multum in Parvo bags, Padlocks, Spanners, Wrenches, Whistles (The Boston Club Calliope), Waterproof suits and many more objects. , 16 pages including covers. Size is 9-3/8" x 11-3/4". Fair condition with some surface taped. Estimate: 100.00 - 150.00



**410 Condor Baracchi Men's Bicycle**

Condor Baracchi men's 21 1/2" lightweight track bicycle. Record Du Monde rims. Italia Supperieggera saddle. Needs tires and chain. Good condition. From the collection of award winning actor Anthony LaPaglia. Estimate: 200.00 - 300.00





**29th Annual Bicycle Auction 6/26/2021**

**410a Small Porcelain Bicycle Plates**

Lot (5) porcelain bicycle plates. Largest 5" D.. Good condition. Estimate: 25.00 - 35.00



**415a Tobacco Jar**

Ceramic Italian tobacco jar with High Wheel "GRAN BY 1880". 4 1/2" D., 4 3/4" Ht.. Good condition. Estimate: 50.00 - 75.00



**411 Bianchi Milano Men's Bicycle**

Bianchi Milano men's 22" bicycle. Fair condition. From the collection of award winning actor Anthony LaPaglia. Estimate: 50.00 - 75.00



**416 Specialized Bicycle Frame & Fork**

Specialized bicycle frame and fork. 23 1/2" frame. Direct drive. Fair condition. From the collection of award winning actor Anthony LaPaglia. Estimate: 50.00 - 75.00



**412 Arthur Metcalfe Bicycle Frame & Fork**

Arthur Metcalfe frame and fork. 22 1/2" frame. Fair condition. From the collection of award winning actor Anthony LaPaglia. Estimate: 50.00 - 75.00



**417 Bianchi Bicycle Frame & Fork**

Bianchi bicycle frame and fork. 22" frame. Good condition. From the collection of award winning actor Anthony LaPaglia. Estimate: 50.00 - 75.00



**412a Brooks Odometer**

Scarce Brooks Odometer. Marked "Brooks Odometer / Lowell Mass. / Patd. Sept. 15. 1885 / Jue. 21. 1887. Good condition. Estimate: 400.00 - 600.00



**418 Demor Bicycle Frame & Fork**

Demor bicycle frame and fork. 22" frame. Fair condition. From the collection of award winning actor Anthony LaPaglia. Estimate: 50.00 - 75.00



**413 Bianchi Bicycle Frame & Fork**

Bianchi bicycle frame and fork. 22 1/2" frame. Fair condition. From the collection of award winning actor Anthony LaPaglia. Estimate: 50.00 - 75.00



**419 Spezzotto Bicycle Frame & Fork**

Spezzotto bicycle frame and fork. 22 1/2" frame. Fair condition. From the collection of award winning actor Anthony LaPaglia. Estimate: 50.00 - 75.00



**414 Look Bicycle Frame & Fork**

Look bicycle frame and fork. 22 1/2" frame. Fair condition. From the collection of award winning actor Anthony LaPaglia. Estimate: 50.00 - 75.00



**420 Gazelle Bicycle Frame & Fork**

Gazelle bicycle frame and fork. 22 1/2" frame. Good condition. From the collection of award winning actor Anthony LaPaglia. Estimate: 50.00 - 75.00



**415 Marathon Bicycle Frame & Fork**

Marathon bicycle frame and fork. 22 1/2" frame. Fair condition. From the collection of award winning actor Anthony LaPaglia. Estimate: 50.00 - 75.00



**420a Framed Trade Cards**

Lot (2) copper framed trade cards. Largest 4" x 5 1/4". Good condition. Estimate: 25.00 - 35.00



**29th Annual Bicycle Auction 6/26/2021**

**421 Bicycle Frame & Forks**

Bicycle frame and forks. SPRINIX (?). 24 1/2" frame. Fair condition. From the collection of award winning actor Anthony LaPaglia. Estimate: 50.00 - 75.00



**425 Legnano Bicycle Frame**

Legnano bicycle frame. 23". Serial number EV1369. Good condition. From the collection of award winning actor Anthony LaPaglia. Estimate: 50.00 - 75.00



**422 Columbia Pneumatic Safety Frame, Forks, Rear Wheel**

Columbia pneumatic safety frame, forks, rear wheel. As found. From the collection of award winning actor Anthony LaPaglia. Estimate: 50.00 - 75.00



**425a Misc. Lot**

Lot including (2) plates, one with frog on safety bicycle (7 1/2" D., has line), "GRAN BY 1880" (7 1/2" D., good condition), porcelain dresser box, woman on Boneshaker (3" W., good condition), bisque pig (3 1/2" W., good condition). Estimate: 50.00 - 75.00



**422a Plunger Horn**

Early plunger horn. Works. Good condition. Estimate: 25.00 - 50.00



**423 Raleigh Technium Frame & Fork**

Raleigh Technium frame and fork. 23" frame. Fair condition. Serial number R801580230. From the collection of award winning actor Anthony LaPaglia. Estimate: 50.00 - 75.00



**426 Kogo Miyata Bicycle Frame & Forks**

Kogo Miyata bicycle frame, forks and handlebars. 22 1/2" frame. Fair condition. From the collection of award winning actor Anthony LaPaglia. Estimate: 50.00 - 75.00



**427 Gary Fisher Bicycle Frame**

Gary Fisher "Gitche Gume" bicycle frame. 19 1/2" frame. Fair condition. From the collection of award winning actor Anthony LaPaglia. Estimate: 50.00 - 75.00



**423a Misc. Lot**

Lot (3) pieces including 1914 Mass. #Z7759 2" motorcycle registration emblem, Indian Pioneer Valley Cycle Rally 1 3/4" button and 2002 Indian Day 1" pin. Good condition. Estimate: 50.00 - 75.00



**428 Rambler Pneumatic Safety Bicycle Frame**

Rambler Gormully & Jeffery pneumatic safety bicycle frame. Fair condition. From the collection of award winning actor Anthony LaPaglia. Estimate: 50.00 - 75.00



**424 Benotto Bicycle Frame & Fork**

Benotto bicycle frame and fork. 23" frame. Fair condition. From the collection of award winning actor Anthony LaPaglia. Estimate: 50.00 - 75.00



**429 Gazelle Bicycle Frame & Fork**

Gazelle Sprinter Race bicycle frame, fork, saddle and handlebars. Fair condition. 25" frame. From the collection of award winning actor Anthony LaPaglia. Estimate: 50.00 - 75.00



29th Annual Bicycle Auction 6/26/2021

LOT #

**430 Bicycle Wheels**

Lot (4) 28" bicycle wheels including Nisi "Toro" rear with Shimano 12 speed gear set, rear with Sturmey Archer 10 speed gear set and (2) front wheels (one has fender and light). From the collection of award winning actor Anthony LaPaglia. Estimate: 50.00 - 75.00



**431 Early Bicycle Saddle**

Early bicycle saddle. Fair condition. From the collection of award winning actor Anthony LaPaglia. Estimate: 50.00 - 75.00



**431a Thomas Stevens Print**

Print. Thomas Stevens lithograph. Stevens was the first man to bicycle around the world. Lithograph shows Stevens with his Pith Helmet around his left forearm, a Carrying bag attached to the backbone behind the seat and a luggage carrier with his kit. Facsimile printed signature is a part of the print. Litho is signed "Kelly . '87" for 1887. Exterior of frame is 9-3/8" x 11-3/4". Original antique chromolithographic print and of the era. Printed in America. Modern archival framing. Can be mounted on a wall or sit on a table or desk. Very good overall. Estimate: 75.00 - 125.00



**432 Tire Lot**

Collection of (5) 28" wheels including rear Nisi with 10 speed gear set, rear Aero Velocity 2 sided single gear, (4) front wheels including Campagnolo Omega, Mave Montheery Route, Weinmann LP 18. Good condition. From the collection of award winning actor Anthony LaPaglia. Estimate: 50.00 - 75.00



**433 Schwinn 26" Front Wheel With Tire**

Schwinn 26" tubular S5 26" front wheel with tire. Good condition. Estimate: 25.00 - 50.00



**434 U. S. ROYAL Bicycle Shop Clock**

Vintage U. S. ROYAL bicycle shop clock. 14" D.. Fair condition. Estimate: 100.00 - 150.00



**435 Bicycle Stand**

Cast iron bicycle stand The "OCTYPUS" / RD NO 527342 / Patent No. 7825. Good condition. Estimate: 150.00 - 250.00



**436 Bicycle Lamp**

Bicycle candle lamp. Nice condition. 5 3/4" Ht.. Estimate: 50.00 - 75.00



**437 Bicycle Lamp**

Bicycle candle lamp. 8" L.. Good condition. Estimate: 50.00 - 75.00



**438 Bicycle Lamp**

Early bicycle oil lamp. 6" Ht.. Good condition. Estimate: 50.00 - 75.00



**439 Bicycle Lamp**

Early bicycle lamp with bracket. Columbia Model C (carbide). 6" Ht.. Good condition. Estimate: 50.00 - 75.00



**440 Bicycle Bells**

Lot (2) brass top bicycle bells. Fair condition. Estimate: 50.00 - 75.00



**29th Annual Bicycle Auction 6/26/2021**

**441 Solar Bicycle Lamp**

Early Solar carbide bicycle lamp with bracket. 6 3/4" Ht.. Good condition. Estimate: 50.00 - 75.00



**442 Bicycle Lamps**

Lot (2) early bicycle lamps including Lucas Silver King and Evening Sun. Fair condition. Estimate: 50.00 - 75.00



**443 Bicycle Lamp**

Early bicycle oil lamp "I.C. Lantern". 6" Ht.. Good condition. Estimate: 50.00 - 75.00



**444 Misc. Lot**

Misc. lot including (2) early bicycle lamps (as found), bracket, bell and belt buckle, high wheel model. Estimate: 25.00 - 50.00



**444a Lucas Bicycle Lot**

Lucas lot – 2 pieces. Dealer Sales Receipt book for LUCAS "King Of The Road" Cyclealities. Size is 8" x 5". Originally 50 Sales pages with the blank copy behind. Now starts at page 4 going to page 50. Unused Original Carbon paper at back. Circa 1940; Escutcheon or crest for the Lucas Bowmen. This was affiliated with Lucas Industries of Birmingham which organized the club. This eventually became the Solihull Archers in 1946. Metal thread on green background with Lion Rampant, Arrows & text. Unusual and very uncommon. Size is 3-1/2" tallest x 3-1/4" widest. Very good overall but some signs of aging. Estimate: 50.00 - 75.00



**445 Pair Pedals**

Pair pedals and crank arms. Good condition. Estimate: 50.00 - 75.00



**445a Cyclist Road Books/Map Bermuda & England**

Book and Maps; Travel related. 2 objects. The Cyclist's Road Book by Charles Spencer. Hard cover 1891 Edition. 222 pages. Covers are 4-3/4" x 7". Hundreds of routes, over 1,000 towns listed and interesting advertisements from such notable companies as Marriott & Cooper, Coventry Machinists' Co., Ellis & Co. (the Facile), Goy & Co., and others. Exceptional information with hotels, populations and route directions with lots more; Driving and Cycling Road Map of Bermuda. Board covers are 4" x 6-1/4". Map opens to 27-1/2" x 11. High Wheel cyclist on the cover with palm trees and a carriage in the background. Indicates the grades and condition of the roads. 4th Edition from 1911. Very good overall. Estimate: 75.00 - 100.00



**446 Bicycle Wrenches**

Lot (8) early bicycle wrenches. Some signed. Good condition. Estimate: 50.00 - 75.00



**447 Early Child's Rocking Horse**

Early child's wooden rocking horse. 31" x 14 1/2" x 25". Original condition. Estimate: 75.00 - 125.00



**448 Early Child's Scooter**

Early child's scooter with disc wheels. Original condition. Estimate: 200.00 - 300.00



**448a Misc. Lot, New Departure & Corbin**

Bicycle and Motorcycle lot of 5 early miscellaneous Corbin and New Departure Coaster Brake items. All circa 1900-1910: 3 New Departure advertising Post Cards. 1 posted in 1909 and 2 in 1910; An interesting double-sided embossed swivel souvenir (possibly a cuff link) with a male cyclist on one side and a lady cyclist on the other. About 1-5/8" overall; Corbin brochure for the model 5B Motor Cycle





**29th Annual Bicycle Auction 6/26/2021**

Coaster Hub and Model 6 standard and chainless hubs. American. Very good overall.

Estimate: 75.00 - 100.00

**449 Early Rambler Child's Pull Wagon**

Early Rambler child's pull wagon. Nice restored condition. Estimate: 100.00 - 200.00



**450a Velocipede Pedals**

Velocipede pedals in original box. NOS. W. J. Surre & Son, Erie, Penna.. Box 3 1/2" x 3 1/2" x 2 1/2". Estimate: 50.00 - 75.00



**451 Columbia Paper Sign**

Vintage Columbia paper sign "AMERICA'S FIRST BICYCLE / SINCE / 1877". 16" x 11". Good condition. Case not included.

Estimate: 40.00 - 60.00



**452 Ephemera Lot**

Misc. ephemera from estate of Lucky T.. Includes original stationary, Cage of Death flyers, Indian Motorcycle Hall of Fame Certificates. Good condition. Estimate: 50.00 - 75.00



**453 Wall Of Death Signed Posters**

Lot of signed Lucky T Wall of Death posters. Estate of Lucky T.. 20" x 14". Estimate: 100.00 - 150.00



**454 New Departure Advertising Display**

Vintage cardboard New Departure advertising display. Fair condition. 10" x 12". Estimate: 40.00 - 60.00



**455 Printers Blocks**

Lot vintage bicycle printers blocks. Fair condition. Estimate: 25.00 - 35.00



**455a Box of Vintage Graphite Chain Lube**

Box of vintage Graphite Chain lube.

Estimate: 25.00 - 35.00



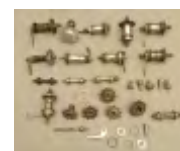
**456 Misc. Antique Bicycle Patch Kits Lot**

Lot including misc. antique bicycle patch kits, tubes, Schrader tire valves, Diamond chain boxes and misc.. Fair to good condition. Estimate: 100.00 - 150.00



**457 Bicycle Hub Lot**

Lot misc. early bicycle hubs. Includes New Departure, Morrow, Musselman. Fair to good condition. Estimate: 75.00 - 100.00



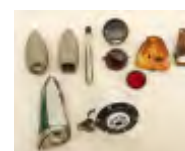
**458 Vintage Tire Patch Kits**

Lot misc. vintage tire patch kits, includes Ace Patch Co.. Fair to good condition. Estimate: 50.00 - 75.00



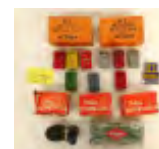
**459 Bicycle Parts Lot**

Misc. vintage bicycle head lights, tail lights, horns and misc.. Fair to good condition. Estimate: 100.00 - 150.00



**460 Bicycle Parts Lot**

Lot misc. bicycle parts boxes, tubes etc.. Some boxes empty. Some NOS. Estimate: 50.00 - 75.00



29th Annual Bicycle Auction 6/26/2021

LOT #

**461 Bicycle Pull Cart**

C. 1920's bicycle pull cart. 36" W., 63" L..  
Good condition. Estimate: 150.00 - 250.00



**462 Melton Men's Bicycle**

Melton men's 19" frame bicycle. Along with  
(2) non matching wheels. Good condition.  
Estimate: 100.00 - 150.00



**463 Schwinn Paramount Frame**

Schwinn Paramount 19 1/2" frame. Good  
condition. Estimate: 50.00 - 100.00



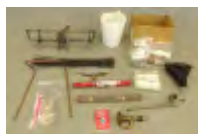
**464 Riding Boots & Hats**

Lot including pair of riding boots and (3)  
hats. Fair condition. Estimate: 50.00 - 75.00



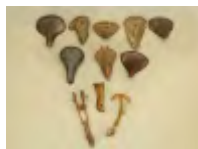
**465 Misc. Lot**

Misc. lot including bicycle parts, tire tool,  
pedals spokes etc.. Estimate: 50.00 - 75.00



**466 Bicycle Saddles**

Lot misc. bicycle saddles and parts.  
Estimate: 50.00 - 75.00



**466a Brooks Bicycle Saddle**

Saddle – Brooks B5N – Racing pattern with  
adjustable frame. Produced circa 1970s.  
Chrome rails. Two clips for saddle bag.  
Narrower pattern for suiting slightly longer  
top tubes for some riders. About 6" wide  
and deep enough to stop bowing for most  
riders. Made in England with BROOKS  
name tag riveted at the back. Signs of use.  
Estimate: 50.00 - 75.00



**467 Mercury Child's Wagon**

Early Mercury child's wagon. Nice restored  
condition. Estimate: 100.00 - 200.00



**468 American Airflow Child's Wagon**

Early American Airflow child's wagon. Nice  
restored condition. Estimate: 100.00 - 200.00



**469 Cleveland Pneumatic Safety Bicycle Frame**

Cleveland pneumatic safety bicycle frame.  
As found. Estimate: 50.00 - 75.00



**470 Columbia Hard Tire Safety Frame**

Early Columbia hard tire safety frame. As  
found. Estimate: 50.00 - 75.00



**471 Shelby Flyer Bicycle Frame**

Shelby Flyer bicycle frame. 19 1/2" frame.  
As found. Estimate: 25.00 - 50.00



**472 Cal's Colt Child's Riding Horse Toy**

Early Carl's Colt child's riding horse toy.  
Original condition. Estimate: 150.00 - 250.00



**473 Early Child's Scooter**

Early pressed steel child's scooter. Has bell  
and noisemaker. Nice restored condition.  
Estimate: 200.00 - 300.00



**474 Tricycle**

Early tricycle with head lamp. 14 1/2"  
wheels. Nice restored condition. Estimate:  
200.00 - 300.00



29th Annual Bicycle Auction 6/26/2021

LOT #

**475 Bicycle Stand**

Aluminum bicycle stand. 19 1/2" L.. Good condition. Estimate: 50.00 - 75.00



**507 Roadmaster Reissue Bicycle**

1948/1998 Roadmaster Luxury Liner Anniversary edition bicycle. Serial number 02160244. 26". Good condition. Estimate: 300.00 - 400.00



**476 Early Tricycle**

Early tricycle with hard rubber wheels. Has bell and noisemaker. Older restoration. 15 3/4" wheels. Good condition. Estimate: 200.00 - 300.00



**508 Columbia RX 5 Reissue Bicycle**

Columbia RX 5 Reissue bicycle. 26". Serial number G1320192. Good condition. Estimate: 200.00 - 300.00



**477 Super Sonda Child's Scooter**

Early Super Sonda Chain Drive child's scooter. Restored condition. Estimate: 200.00 - 300.00



**509 1960's Hiawatha Gambles Bicycle**

1960's Hiawatha Gambles bicycle. Gambles anniversary of the Spaceliner. Serial number 789431 (Murray). Good condition. Estimate: 200.00 - 300.00



**477a Pre-War Columbia Bicycle**

Pre-War Columbia bicycle. Retains horn, light, missing pedals. As found. Estimate: 200.00 - 300.00



**510 C. 1900 Rambler Model 38 Chainless Bicycle**

C. 1900 Rambler Model 38 chainless bicycle. Comes with extra wheel. Barn fresh condition. Estimate: 800.00 - 1,200.00



**490a Pair Mavic Rims**

Pair C. 1992 tubular Mavic rims with Vittoria sew up tires. Mavic Mach 2, CD 2, V shape. Good condition. Estimate: 50.00 - 75.00



**511 Misc. Lot**

Misc. lot including bicycle reference books, high wheel statue, playing cards. Estimate: 25.00 - 35.00



**500a Jewelry Box Lot**

Lot (3) bicycle motif jewelry boxes. One as found. Estimate: 25.00 - 50.00



**512 Framed Bicycle Medals**

Framed presentation collection of bicycle medals and photograph "Meisterschaft-Wien-Praterbauhn-1902". Fair to good condition. 19 1/2" x 27 1/2". Estimate: 200.00 - 300.00



**505a Bicycle Prints**

Pair small framed prints with High Wheel riders. Overall 6 1/2" x 8 1/2". Good condition. Frames have slight imperfections. Estimate: 25.00 - 35.00



**513 Framed Wheelmen Poster**

Early framed poster (broadside), "THE AMERICAN WHEELMEN / WOMAN AWHEEL". Sight 17" x 9". Fair condition. Estimate: 50.00 - 75.00



**29th Annual Bicycle Auction 6/26/2021**

**514 Framed Wheelmen Poster**

Early framed poster (broadside), "THE AMERICAN WHEELMEN / THE WORLD IS ON WHEELS". Good condition. Sight 10" x 10". Estimate: 50.00 - 75.00



**520 C. 1890-1900 Iver Johnson Bicycle**

C. 1890-1900 Iver Johnson pneumatic safety bicycle. 22" frame. Made in Fitchburg Mass.. Barn fresh condition. Serial number 7178. 28" wheels. Estimate: 100.00 - 150.00



**515 Framed Wheelmen Poster**

Early framed poster (broadside), "READ / THE AMERICAN WHEELMEN...". Good condition. Sight 13" x 9 3/4". Estimate: 50.00 - 75.00

**521 C. 1920's Iver Johnson Bicycle**

C. 1920's Iver Johnson female bicycle. Serial number 481689. "Camp Fire Girl's Roadster", Model 18L, 16" frame. Made in Fitchburg Mass.. Original condition. Estimate: 200.00 - 300.00



**516 Le Petit Journal Framed Print**

Le Petit Journal frame bicycle print. Good condition. Sight 16 1/2" x 11". Estimate: 50.00 - 75.00



**522 C. 1920's Lovell-Diamond Bicycle**

C. 1920's Lovell-Diamond female bicycle. Made by Iver Johnson Sports Goods Co., Boston Mass.. Mesinger saddle #1. Cyclometer. Original condition. Estimate: 100.00 - 200.00



**517 Framed Wheelmen Membership Cards**

Framed collection of The League of American Wheelmen membership cards. Good condition. Frame overall 18" x 22". Estimate: 50.00 - 100.00



**523 C. 1920's Iver Johnson Bicycle**

C. 1920's Iver Johnson female bicycle. 18" frame. Made in Fitchburg Mass.. Mesinger #4 saddle. Serial number 582883. Original condition. Estimate: 100.00 - 200.00



**518 Framed Bicycle Photos**

Collage of early framed bicycle photos. Marked LRC "WIEN". Frame overall 21 1/2" x 17". Estimate: 50.00 - 75.00



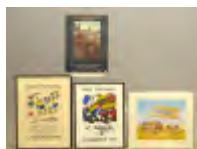
**524 C. 1920's Iver Johnson Bicycle**

C. 1920's Iver Johnson bicycle. 20" arch frame. Serial number 538858. Made in Fitchburg Mass.. Fair condition. Estimate: 150.00 - 250.00



**519 Bicycle Posters**

Lot (4) framed bicycle posters. Largest 30" x 23". Includes Wright Brothers print signed Ruth Brunner Strusser, 1996 Maine Share The Road, 1982 Port Townsend, 1983 Port Townsend. Good condition. Estimate: 50.00 - 75.00



**525 Pre-War Iver Johnson Bicycle**

Pre-War Iver Johnson Light Weight bicycle. 20" frame. Serial number 601385, 2 speed rear hub. Made in Fitchburg Mass.. Fair condition. Estimate: 50.00 - 100.00





29th Annual Bicycle Auction 6/26/2021

LOT #

**526 C. 1920's Iver Johnson Bicycle**

C. 1920's Iver Johnson female bicycle. 22" frame. Made in Fitchburg Mass.. Serial number 287774. Good condition. Estimate: 200.00 - 300.00



**526a 1981 Motobecane Super Mirage Bicycle**

1981 Motobecane Super Mirage bicycle. 24 1/2" frame. Good condition. One owner. Estimate: 100.00 - 200.00



**527 Cast Iron Horse Tricycle**

Vintage cast iron horse tricycle. 43" L., 29" Ht.. Good condition. Estimate: 200.00 - 300.00



**528 Bicycle Book Lot**

Lot (17) bicycle related books, pamphlets including "LA BICICLETTA", "BICYCLES AND TRICYCLES", "Cycles in Colour", "Riding High", "THE LOG / OF THE / "AMPHIBIOUS", "THE YEARS OF THE HIGH BICYCLE", "ORDINARIES / SAFETIES and FUN", "BICYCLING 1874", "SCOTTISH BICYCLES/ TRICYCLES", "Silent Steeds", "The Art / Of / The Wheelman", "Strange bu True", "Bicycles of the Year / 1877", "Bikes & Trikes / of / Long Ago", "Velociped Brochure", "Wheels On Ice", "Bicycle People". Good condition. Estimate: 50.00 - 75.00



**529 Bicycle Book Lot**

Lot (7) bicycle related books including "Bicycles & Tricycles", "Around The World On A Bicycle", "A Social History of the Bicycle", "Wheels of Change", "The Wright Brothers", "King Of The Road", "Iron Riders". Good Condition. Estimate: 50.00 - 75.00



**530 Bicycle Book Lot**

Lot (5) bicycle related books including "Hollywood Rides a Bike", "THE RIDE TO MODERNITY", "THE MECHANICAL HORSE", "Boston's Cycling Craze / 1880-1900", "SCORCHERS, RAMBLERS, AND ROVERS". Good condition. Estimate: 50.00 - 75.00



**531 Early Wooden Bicycle Handlebars**

Early wooden bicycle handlebars. 21 1/2" W.. Fair condition. Estimate: 75.00 - 100.00



**531a Bicycle Ephemera Lot**

Ephemera – over 20 pieces. 20th Century - includes Catalogs, Letters & Greeting Cards. SCHWINN (4 pieces) including a circa 1948 "Schwinn Lightweight and Balloon Bicycle Catalog". 4" x 9" opens to a 10 page 8" x 9" multi-colored brochure. Full page prominence awarded to the Phantom plus Panther, Meteor, Leader, Streamliner, Spitfire, Starlet, Hornet, Traveler, World Traveler, World, Varsity Tandem, Sports Continental, Paramount and Paramount Racer plus many more, 2 x \$59.95 retail price Hang Tags and a letter with envelope from the parts department in July 1951; Valentine circa 1925 boy and girl on a two seater motorized cycle. 3 Panel die cut and embossed 3D. In excellent condition; Valentine circa 1940 with a bear on a US Mail identified high wheel bicycle. Leg moves back and forth. Wheel, not attached to leg does revolve independently.; Labor Day 1901 Brunswick Bicycle Club Admission ticket to their Meet in Brunswick, N.J.; 6 Day Bike Race admissions ticket at the 22nd Engineers Armory from Feb. 27, 1949; Circa 1943 Prize Draw Ticket from the Albany Times-Union; 1961 WINONA Bicycle License #1001 printed on self-adhesive Reflective Strip; circa 1920 Hub Cycle Co. Price list pamphlet for Bicycle and Motorcycle Tires. 4 pages including cover. Boston; 1961 Howard Johnson's comic book inclusive of their children's menu. 16 pages including covers; circa 1920 Christmas Greetings card with a great Santa on a bike; American Bicyclist mint never used letter heads for contemporary circa 1941 stationary.

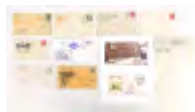


**29th Annual Bicycle Auction 6/26/2021**

August 1953 Back To School On A Bike 4 page advertiser; Columbia multi-color letterhead, Mead Cycle Company 1904 letterhead and postally used envelope.; 1921 Columbia Westfield Manufacturing Co. postally used Envelope; Corliss & Son of Boston envelope with script but not mailed; The Westfield Manufacturing Co. catalog of CARNIVAL bicycles includes "Streamline Special Tank Model" and "Streamline Motobike". 3-1/2" x 6" brochure opens to a double sided 13-3/4" x 12-1/8" single sheet; 5 other miscellaneous pieces. Lot is generally in very good condition. Estimate: 50.00 - 100.00

**532 Philatelic Bicycle Lot**

Philatelic bicycle lot including First Day Covers. Good condition. Estimate: 50.00 - 75.00



**533 Bicycle Souvenir Spoons**

Lot (3) early bicycle souvenir spoons including 1897 Boston Bicycle Show, Orient and L. A. W.. Good condition. Estimate: 75.00 - 100.00



**534 Bicycle Accessories Lot**

Lot including adjustable footrests, Victor wrench, pump clips and horn part. Case not included. Good condition. Estimate: 75.00 - 100.00



**535 Bicycle Bell**

Continuous ringer bicycle bell with American Flag design. Good condition. Estimate: 100.00 - 150.00



**536 Bicycle Licenses**

Lot including (2) bicycle licenses (1898 Brooklyn, Cortland County), and 1889 Elmira Cyclers permit. Good condition. Estimate: 100.00 - 150.00



**537 OWC Pump & Victor Lock Lot**

OWC pump (7" L.), and Victor lock with key. Good condition. Scarce lock. Estimate: 150.00 - 200.00



**538 L. A. W. Bicycle Ribbons**

Lot (12) L. A. W. bicycle ribbons. Dates range from 1890-92. Includes Albany, Toledo, Washington, Norfolk, Plainfield N.J., Scranton, Kanaweola. Good condition. Case not included. Estimate: 100.00 - 150.00



**539 Bicycle Race Ribbons**

Lot (10) early bicycle race ribbons. Includes Canton Bicycle Club, Amphion Wheelmen, York Cycle Club, Quill Club / Cleveland, Albany Wheelmen, North End Wheelmen, Alpha Wheel Club, A. C. C. of L. I.. Good condition. Case not included. Estimate: 100.00 - 150.00



**540 Bicycle Ribbon Lot**

Lot (6) early bicycle ribbons including "Haverstraw Bicycle Club '92", "Falcon Bicycles", "1896 Viking Bicycle", "AID 1st Division / Parade", 1896 Flushing Long Island / Mercury Wheel Club", "1895 Flushing Long Island / Mercury Wheel Club". Good condition. Case not included. Estimate: 100.00 - 150.00



**541 Bicycle Books**

Lot (8) bicycle books including "BICYCLE DESIGN", "A HISTORY OF CYCLING IN 100 OBJECTS", "BICYCLES", "BICYCLE COLLECTIBLES", "Fahrrad und Radfahrer", "Das Zweirad", "CYCLE PEDIA", "A CYCLING LEXICON". Good condition. Estimate: 50.00 - 100.00



29th Annual Bicycle Auction 6/26/2021

LOT #

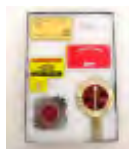
**542 Bicycle Books**

Lot (8) bicycle related books including "Quest For Speed", "Hearts Of Lions", "Major Taylor", "Life in the SLIPSTREAM", "THE GOLDEN AGE of BICYCLE RACING in NEW JERSEY", "A THOROUGH GOOD FELLOW", "FLYING YANKEE" and "The LITTLE BLACK BOTTLE". Good condition. Estimate: 50.00 - 75.00



**543 Misc. Lot**

Lot including collectable license plates, Plain Dealer Bicycle Light Brigade add on and Bicycle Safety Club add on. Case included. Estimate: 50.00 - 75.00



**544 Early Tandem Toy**

Early tandem with sidecar toy with (2) figures (3" L.), along with trade card. Good condition. Estimate: 50.00 - 75.00



**545 High Wheel Toys**

Lot (2) early High Wheel toys. Includes rider on trike (4 1/2" L.), and Cyclist on High Wheel spin toy. Good condition. Estimate: 100.00 - 150.00



**546 Early Bicycle Poster**

Early framed European bicycle poster "GLADIATOR". Artist René Leverd (1872 - 1938). Sight 56" x 41 1/2". Good condition. Estimate: 400.00 - 600.00



**547 Handlebar Stems Lot**

Large lot of handlebar stems. Estimate: 200.00 - 300.00



**548 Pedal Lot**

Large lot of pedals. Estimate: 200.00 - 300.00



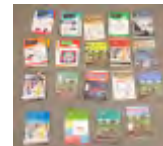
**549 Bicycle Hub Lot**

Lot of (15) bicycle hubs. Estimate: 50.00 - 100.00



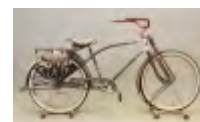
**550 American Bicyclist & Motorcyclist Magazines**

Lot of C. 1969-1978 American Bicyclist & Motorcyclist magazines. Estimate: 25.00 - 50.00



**550a Pre-War Peerless Bicycle**

Pre-War Peerless bicycle. Features saddle bags. Fair condition. Estimate: 150.00 - 250.00



**551 Harley Davidson Motorcycle Sign**

Sheet metal Harley Davidson Motorcycle sign. 7" x 23 1/2". Fair condition. Estimate: 100.00 - 150.00



**552 Harley Davidson Tank Tags**

Lot (3) Harley Davidson tank tags. Good condition. Estimate: 50.00 - 75.00



**553 Esso Sign**

Esso porcelain 10" sign "HAPPY MOTORING". Good condition. Estimate: 50.00 - 75.00



**554 Misc. Lot**

Misc. lot including (2) spot lights, generator light, saddle, Fire Chief Siren in box, fender lights etc.. Estimate: 50.00 - 75.00



**29th Annual Bicycle Auction 6/26/2021**

**555 1969 Schwinn Stingray "Lil Chic"**

1970s Schwinn Stingray Lil Chik, good condition, all original. Estimate: 75.00 - 100.00



**562 Framed Bicycle Advertisements**

Framed and matted early bicycle advertisements. Nice presentation. Good condition. Overall 23" x 34". Estimate: 100.00 - 200.00



**556 1970 Schwinn Traveler Bicycle**

Late 1970s Schwinn Traveler III 10 speed racing bike Made in Japan, Good condition with Japanese components. Estimate: 100.00 - 150.00



**563 Print "BICYCLING ON THE RIVERSIDE NEW YORK"**

Framed print "BICYCLING ON THE RIVERSIDE NEW YORK-Drawn by T. De Thulstrup". Sight 9" x 13 3/4". Good condition. Estimate: 50.00 - 75.00



**557 1970's Motobecane Nomade**

Late 1970s Motobecane Nomade 10 speed racing bike with Huret components. Used condition, mechanically sound. New tires and tubes. Estimate: 100.00 - 150.00



**564 Framed Bicycle Prints**

Four early framed and matted bicycle prints. Includes Boneshakers, Safeties, High Wheels. Overall 22" x 27". Good condition. Estimate: 100.00 - 150.00



**558 Print "DUTTON'S HOLIDAY ANNUAL for 1899"**

Framed print "DUTTON'S HOLIDAY ANNUAL for 1899". Sight 10" x 7 1/2". Good condition. Estimate: 50.00 - 75.00



**565 Bicycle Prints**

Lot (4) framed bicycle prints. Includes couple on tricycle, racer etc.. Largest 16" x 12 1/2". Estimate: 25.00 - 50.00



**559 Print "THE CYCLIST'S CAMP AT ALEXANDRA PARK"**

Print "THE CYCLIST'S CAMP AT ALEXANDRA PARK". Sight 10 1/2" x 13 1/2". Features High Wheels, Tricycles etc.. Good condition. Estimate: 50.00 - 75.00



**566 Misc. Lot**

Lot including bicycle board game in original box "THE GREAT VICTORIAN", along with book "American Heritage" and C. 1900's book "Wide Awake" with figures and safety bicycles on cover. Fair-Good condition. Estimate: 25.00 - 50.00



**560 Print "A CENTURY RUN-ON THE HOMESTRETCH"**

Framed print "A CENTURY RUN-ON THE HOMESTRETCH-Drawn By A. B. Frost". Sight 9 1/2" x 13 1/4". Good condition. Estimate: 50.00 - 75.00



**567 Bicycle Trays**

Lot of (6) assorted bicycle trays including vintage "Gretz Beer". Estimate: 25.00 - 50.00



**561 Framed Die Cuts**

Six framed early die cuts. Includes Safety bicycle, High Wheels, Tricycle. Frame overall 13 1/2" x 15 1/2". Good condition. Estimate: 50.00 - 75.00



**568 Silverplate Sport Cup**

Small silverplate sport cup with rider on safety bicycle. 2" Ht.. Good condition. Estimate: 25.00 - 35.00





**29th Annual Bicycle Auction 6/26/2021**

**569 Pair Vintage Plaster Sculptures**

Pair of vintage Safety rider plaster sculptures. Probably bookend / planters. 10 1/2" x 12 1/2". Good condition. Estimate: 25.00 - 50.00



**576 High Wheel Backbone**

Early high wheel bicycle backbone. As found. Estimate: 100.00 - 200.00



**570 Thimble Collection**

Collection of (8) bicycle motif thimbles. Good condition. Estimate: 25.00 - 35.00



**577 Tires & Rim Lot**

Lot various early tires and rims. Fair condition. Estimate: 75.00 - 100.00



**571 C. 1912 Pierce Men's Bicycle**

C. 1912 Pierce pneumatic safety bicycle. Leaf spring front fork, rear suspension. Over painted red. As found. Estimate: 400.00 - 600.00



**578 Early Child's Folding Chair**

Early child's folding chair. Fair condition. Estimate: 25.00 - 35.00



**582 Philham Cycle Supply Co. Bicycle Catalog**

Vintage Philham Cycle Supply Co. bicycle catalog. Good condition. Estimate: 50.00 - 75.00



**572 Schwinn Panther Bicycle**

Schwinn Panther 26" balloon tire bicycle. 18 1/2" frame. Good condition. Estimate: 150.00 - 250.00



**583 Harley Davidson Magic Lantern Slides**

Set of (6) scarce early Harley Davidson Magic Lantern slides. One has cracked corner. Estimate: 100.00 - 150.00



**573 Columbia Fire-Arrow Bicycle**

Columbia Fire-Arrow balloon tire 24" bicycle. 18" frame. Good condition. Estimate: 150.00 - 250.00



**584 The Challenge Hub Lamp**

Early "THE CHALLENGE LAMP" hub lamp. 8" Ht.. As found condition. Estimate: 200.00 - 400.00



**574 Vintage Western Flyer Bicycle**

Vintage Western Flyer bicycle. As found. Estimate: 25.00 - 50.00



**585 Pre-War Female Firestone Cruiser**

Pre-War female Firestone Cruiser. 26". Retains front light and rear rack. Troxel saddle. Good condition. Estimate: 150.00 - 200.00



**575 Handlebar Lot**

Lot misc. early handlebars and fender. As found. Estimate: 50.00 - 75.00



29th Annual Bicycle Auction 6/26/2021

LOT #

**586 Pre-War Huffman Bicycle**

Pre-War Huffman bicycle. 26". Fair condition. Estimate: 75.00 - 100.00



**587 Rudge Tall Frame Bicycle**

Vintage Rudge tall frame bicycle. 26" frame. Fair condition. Estimate: 50.00 - 75.00



**588 1960's Macy's Cyclone Boy's Bicycle**

1960's Macy's Cyclone 24" boy's bicycle. Fair condition. Estimate: 50.00 - 75.00



**589 C. 1940's Wards Hawthorne Female Bicycle**

C. 1940's Wards Hawthorne female bicycle. 19" frame. As found. Estimate: 100.00 - 200.00



**590 1960's Columbia Rambler Boy's Bicycle**

C. 1960's Columbia Rambler boy's 24" bicycle. As found. Estimate: 50.00 - 75.00



**591 Vintage "Fire-Fighter" Tow Behind**

Vintage "Fire-Fighter" tow behind. Fair condition. Estimate: 25.00 - 50.00



**592 Peerless Bicycle Tire Setter**

Peerless bicycle tire machine. Good condition. Estimate: 50.00 - 75.00



**593 Stevens Wheel Tiring Machine**

Stevens wheel tiring machine. Good condition. Estimate: 50.00 - 75.00



**594 Bicycle Chains**

Lot (3) early bicycle chains. Includes (2) skip tooth. Estimate: 50.00 - 75.00



**595 Wheel Tiring Machine**

Early wheel tiring machine. Fair condition. Estimate: 25.00 - 50.00



**596 Misc. Lot**

Misc. lot including (2) saddles, shaft drive casing, tire iron, Dursley Pederson tool pouch, spoke threader etc.. Fair condition. Estimate: 50.00 - 75.00



**597 Rim Builder Tool**

Early rim builder tool. Good condition. Estimate: 50.00 - 75.00



**598 Wooden Rim Lot**

Lot (6) early wooden rims. Fair condition. Estimate: 75.00 - 100.00



**599 Erickson Men's Bicycle**

Erickson men's bicycle. 17" frame. Fair condition. Estimate: 50.00 - 75.00



**600 Bicycle Shop Clock**

NOS bicycle shop clock in box "PARK TOOL USA". Good condition. Estimate: 50.00 - 75.00



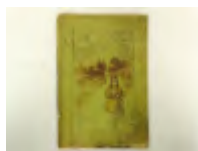
**601 Victor Bicycle Catalog**

1884 Victor bicycle catalog. Ex: Roger Johnson. Fair condition. Estimate: 50.00 - 75.00



**29th Annual Bicycle Auction 6/26/2021**

- 602 1898 Rex Cycle Co. Bicycle Catalog**  
1898 Rex Cycle Co. bicycle catalog. Fair condition. Estimate: 50.00 - 75.00



- 609 Framed Print "NO THOROUGHFARE"**  
C. 1898 framed print "NO THOROUGHFARE". Sight 13 1/2" x 19". Fair condition. Estimate: 25.00 - 50.00



- 603 High Wheel Print**  
Framed High Wheel print. Sight 11" x 7 3/4". Good condition. Estimate: 25.00 - 50.00



- 610 Bicycle Posters**  
Lot (2) reproduction framed bicycle posters "CYCLES OURAGAN..." (overall 39 1/2" x 20"), and "a Bicylette" (overall 29" x 21 1/2"). Fair condition. Estimate: 50.00 - 75.00



- 604 European Framed Bicycle Print**  
C. 1937 bicycle poster print "BYRRH". Sight 13 1/2" x 9 3/4". Good condition. Estimate: 50.00 - 75.00



- 611 Bicycle Lithograph "La Chaîne Simpson"**  
Framed bicycle lithograph "La Chaîne Simpson". Sight 12" x 16 1/2". Estimate: 50.00 - 75.00



- 605 Original Le Tour De France Framed Lithograph**  
Original Le Tour De France framed lithograph. Sight 10" x 14". Good condition. Estimate: 50.00 - 100.00



- 612 Cigar Ephemera Lot**  
Lot misc. bicycle related Cigar ephemera. Good condition. Estimate: 25.00 - 50.00



- 606 Bicycle Poster**  
Reproduction framed bicycle poster "DE.HINDE.IS. / EEN.JUWEELTJE.FABRIEK.TE.AMSTERDAM". Sight 15" x 11". Estimate: 25.00 - 50.00



- 613 Bicycle Ephemera Lot**  
Lot misc. bicycle ephemera including first day cover, loose advertisements, letterheads, receipts etc.. Estimate: 25.00 - 50.00



- 607 Framed Print**  
Framed print, female and male on sociable tricycle. Sight 11 1/4" x 8 1/2". Good condition. Estimate: 25.00 - 50.00



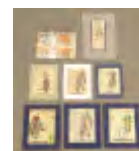
- 614 Bicycle Ephemera Lot**  
Lot misc. bicycle advertising. Good condition. Estimate: 25.00 - 50.00



- 608 Bicycle Poster**  
Reproduction framed bicycle poster "NEDERLANDSCHE KROO / RIJWIELEN...". Sight 16" x 11". Estimate: 25.00 - 50.00



- 615 Bicycle Ephemera Lot**  
Lot misc. bicycle advertising. Good condition. Estimate: 25.00 - 50.00



29th Annual Bicycle Auction 6/26/2021

LOT #

**616 Bicycle Ephemera Lot**

Misc. bicycle ephemera lot including various "DE GROOTE LEEUW" material. Good condition. Estimate: 50.00 - 75.00



**617 Bicycle Lithographs**

Lot (5) C. 1898 bicycle lithographs. Good condition. Estimate: 50.00 - 75.00



**618 1923 Corona Stock Certificate**

1923 Corona stock certificate. Good condition. 14 1/2" x 10 1/2". Estimate: 50.00 - 75.00



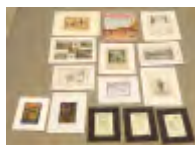
**619 1905 Magazine with Frank Louis Kramer Cover**

1905 magazine "LA VIE AGRANDAIR" with Frank Louis Kramer cover. Good condition. 13 3/4" x 11 1/4". Estimate: 50.00 - 75.00



**620 Bicycle Ephemera Lot**

Lot misc. bicycle ephemera including Bearings Wheelmen tear outs and more. Good condition. Estimate: 50.00 - 75.00



**621 Early Bicycle Oil Bottle**

Early bicycle oil bottle "NYES / FINEST SEWING MACHINE / AND BICYCLE". Fair condition. 5 3/4" Ht.. Estimate: 25.00 - 35.00



**622 Clock**

Contemporary composition clock. Girl posing with bicycle. 8" x 9 1/2". Good condition, along with picture frame, riders with safety bicycles (7" x 8 1/4", good condition). Estimate: 25.00 - 35.00



**623 Tin Lot**

Lot (2) bicycle motif tins and box. Largest 6" x 5". Fair-Good condition. Estimate: 40.00 - 60.00



**624 Vintage Tray**

Vintage serving tray with tandem riders "DAISY". 19 1/2" x 11 1/2". Good condition. Estimate: 25.00 - 35.00



**625 Glass Jar "LE CYCLONE"**

Tall glass jar "LE CYCLONE / CYCLE SANS CHAINE" 4" D., 12" Ht.. Good condition. Estimate: 25.00 - 35.00



**626 Ceramic Tile**

Ceramic tile with High Wheel riders. 7 1/2" x 6". Stamped reverse "DENMARK". One small chip reverse corner. Estimate: 25.00 - 35.00



**627 Bicycle Plates**

Lot (2) French 7 1/4" bicycle plates and platter with cyclist's (13 1/2" x 10 1/2", some roughness to rim). Estimate: 25.00 - 35.00



**628 1920's Bicycle Saddle**

Saddle – Motorcycle or Bicycle. Saddle top is 12" long x 9" wide. Circa 1900-1920. Includes the original 7/8" "T" pattern Seat post. Heavy duty construction. Rod Loop of front spring ahead of the bracket at the bottom rails is broken. Unbranded. USA origin. Signs of stress, wear and age. Metal is sound. Good overall. Estimate: 100.00 - 150.00





29th Annual Bicycle Auction 6/26/2021

LOT #

**629 C. 1960's Columbia Middle Weight Bicycle**

C. 1960's Columbia Middle Weight bicycle.  
Barn fresh. Estimate: 50.00 - 75.00



**636 Tall Clear Glass Bottle with High Wheel Riders**

Tall clear glass bottle with High Wheel riders. 13 1/4" Ht.. Good condition.  
Estimate: 50.00 - 75.00



**630 Showcases**

Lot (2) showcases. Good condition.  
Estimate: 50.00 - 75.00



**637 Clear Glass Pitcher with High Wheel**

Clear glass pitcher with etched High Wheel bicycle. 10 1/2" Ht.. Good condition.  
Estimate: 40.00 - 60.00



**631 Bicycle Locks**

Lot (11) various bicycle locks. Fair condition. Estimate: 25.00 - 35.00



**638 Misc. Lot**

Misc. lot including cigarette lighter with Velocipedes and Tandem, wind-up musical figure, vintage "CHAMP" lamp and tin.  
Estimate: 40.00 - 60.00



**632 Bicycle Parts Lot**

Lot misc. bicycle parts including boxed Elite lights, brake cables, Bendix Coaster brake etc.. Fair condition. Estimate: 25.00 - 35.00



**639 Bicycle Watches**

(2) NOS bicycle watches in original cases.  
Good condition. Estimate: 25.00 - 35.00



**633 Bicycle Truing Stands & Airpump**

Lot (2) bicycle truing stands and air pump.  
Fair condition. Estimate: 25.00 - 35.00



**640 Misc. Lot**

Lot including Italian cake tin with riders on safety bicycles, Boneshakers puzzle and small wood box/bank with key. Estimate: 50.00 - 75.00



**634 Bicycle Bench Stock Lot**

Lot various boxes of mixed bicycle bench stock. Estimate: 50.00 - 100.00



**641 Dunlop Tire Repair Kit Display**

Vintage Dunlop tire repair kit display with (3) kits. 4 1/2" x 5" x 9 1/2". Good condition.  
Estimate: 50.00 - 75.00



**635 Bicycle License Plates**

Lot vintage White Plains bicycle license plates including (1) 1954, (4) 1955, (3) 1956, (27) 1957. Fair condition. Estimate: 25.00 - 35.00



**642 Misc. Lot**

Lo including pair of 1970's bookends with children on bicycles (one has small chip), and (2) English mugs "Charley's / First Machine" and "The Norton-Fox Tricycle" (good condition), and Ezra Brooks Whiskey decanter (good condition).  
Estimate: 50.00 - 75.00



**29th Annual Bicycle Auction 6/26/2021**

**643 Book: Collecting & Restoring Antique Bicycles**

Book: Collecting & Restoring Antique Bicycles (By G. Donald Adams). Good condition. Estimate: 25.00 - 50.00



**644 Royce-Union Bicycle Signals**

NOS Royce-Union Bicycle Directional signals in original box. Box 6 1/2" x 3" x 2 1/2". Estimate: 25.00 - 50.00



**645 Shoe Horn & Brush**

Bicycle form plastic shoe horn and brush. 12" L.. Good condition. Estimate: 25.00 - 35.00



**646 Vintage Italian Bottle**

Vintage Italian bottle with figure on High Wheel bicycle. 10" Ht.. Fair condition. Estimate: 25.00 - 35.00



**647 Tire Tools**

Lot of various early tire tools. Fair-Good condition. Estimate: 25.00 - 35.00



**648 Tire Pumps**

Lot (5) early through vintage tire pumps. Fair condition. Estimate: 25.00 - 35.00



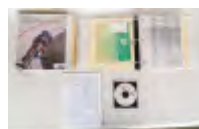
**649 Morrow Hub Lot**

Lot misc. early-vintage Morrow hubs. Estimate: 25.00 - 50.00



**654 Wheelmen Library Binders**

Lot (2) binders, Wheelmen library with (30) reprint catalogs, one disc, one reprint Crescent catalog. Estimate: 25.00 - 50.00



**655 Bicycle Book Lot**

Bicycle related book, (8) including "GOGGLES & DUST", "AMAZING ANFIELDERS", "SHOULDER TO SHOULDER", "THE GOLDEN AGE of BICYCLE RACING in NEW JERSEY", "THE LOST CYCLIST", (2) CYCLE HISTORY", "TOUR DE FRANCE / TOUR DE FRANCE". Good condition. Estimate: 25.00 - 50.00



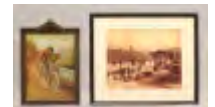
**656 Bicycle Sign**

Wrought iron High Wheel bicycle sign. 41" x 37". Good condition. Estimate: 50.00 - 75.00



**657 Framed Print Lot**

Print and Photograph. Lot of 2; (1) Advertising for Pope Columbia. Illustrates a monkey riding on his bicycle with a Parrot on the handlebar. Done by C. M. Coolidge titled "We Are Having A Heavenly Time!". Not a print of the era. Wonderful ca 1900 frame. Exterior 10-1/2" x 15" tallest; (2) Photograph of the George & Dragon Pub in Ightham in Kent England. Sign reads "COMMERCIAL & BICYCLE HOTEL". Has early tandem tricyclists on the roadway a carriage behind. The exact pub with the same name exists today. This image is circa 1883. Copy image from the original of the era. Exterior of frame is 19-1/2" x 16-1/4". Both pictures are in very good condition. Estimate: 100.00 - 150.00



**658 Bicycle Postcard Lot**

Post Cards – 19 assorted – Consists of photographic and lithographic examples from 1908 to ca 1950. Noteworthy – 2 ladies ca 1930; Family party with floral enhancements dated 1930; Man & Lady on a Tandem circa 1910; Youth on a bicycle; Southern Africa – on a Zulu Reserve with hand made bicycles circa 1920; Chromolithograph - Bum on his bicycle carrying a child; Repairing a cycle; a team racer; Daytona Beach with early Locomobile auto racing two bikes with sails; various international street and city



**29th Annual Bicycle Auction 6/26/2021**

views + some greeting. Conditions vary.  
Estimate: 75.00 - 100.00

**659 Paperweight, High Wheel in Glass**

Glass Paperweight with High Wheel Bicycle. 3-1/4" diameter x 1-7/8" high. Reads "FRIENDSHIP" atop the bike. Made circa 1883. Frosted base has a chip which does not appear when looking straight down. Other signs of handling and use. Some faults.  
Estimate: 75.00 - 125.00



**660 Lamp Casting**

Casting of a Fairy or Cherub on a High Wheel or Ordinary. Part of a circa 1885 Oil Lamp. 12-1/4" tall. Can be modified for a multitude of purposes. Brass plated. Very good overall condition.  
Estimate: 200.00 - 300.00



**661 Misc. Lot**

American Magazine, Journal, Pamphlet and Book lot. 14 Pcs. – Antiques magazine from October 1925; The Art of Bicycle Riding by Fred St. Onge published by The Corbin Screw Corporation, Copyright 1920 with illustrations of trick riding; 4 issues of BBJ - Bicycle Business Journal from 1990s; The Bicyclist's Guide for Manhattan from 1972, Cycling by Roy Ald of 1968; working reprint 1891 copy Gormully & Jeffery ( G & J ) Catalog; How To Fix Your Bicycle by Helen Garvey, 3rd Edition of the 1971 book; Pedal Pushers pamphlet from The History Museum of Santa Cruz County. Lots of images and excellent text. Published 1994; National Geographic from September 1972; 90th Anniversary (1969) & 100th Anniversary (1979 in Hard Cover) issues of The American Bicycle & and Motorcycle. Mixed condition to Mint. Estimate: 75.00 - 100.00



**662 Bicycle Lamps**

Lamps – 2 Lucas. Both made for the North American market. Front Fork mount. Circa 1910. Oil Lamp fits to the front fork and extends from the left side. Red rear lens with a Clear front. Hinged Left side opens in order to light the wick. Mainly black Japanned with Nickel. Not commonly found in North America. Not restored. As found condition. (2nd) Early Battery model is complete with a North American Front mount bracket. The Vent hole at the base is "as made" to avoid corrosion by allowing the battery gasses to escape. Circa 1930. Very good overall condition.  
Estimate: 75.00 - 100.00



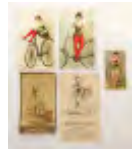
**663 Pair Spats Leather Ladies Calf Protectors**

Ladies Leather Spats. Suitable for a ladies cycling outfit or mannequin. 8" tall. Velcro buckles. Modern. Signs of use. In very good condition.  
Estimate: 40.00 - 60.00



**664 Bicycle Ladies Tobacco & Trade Cards**

Ladies High Wheel bicycle & Hard Tired Safety Tobacco Trade Card and Photograph lot of 5 pieces. All circa 1888; 2 Honest Long Cut H.T.S. chromolithographic cards. Size 2-1/2" x 4-1/8"; 1 High Wheel named Cyclist by the American Eagle Tobacco Co. Size is 1-1/2" x 2-3/4"; Lithograph Trade Card of a lady on a High Wheel for Aishberg's Shoe Store printed by Eureka Print in New York for Bufford in Boston. Size is 2-5/8" x 4-1/2"; Honest Long Cut albumen photo with a lady on a Cross framed H.T.S. Lot of 5 pieces. Conditions vary.  
Estimate: 100.00 - 125.00



**665 Bicycle Ephemera Lot**

Ephemera - Mixed Lot – England; Booklet "Building Fine Bicycles" for Raleigh Industries circa 1951; Lot 4 pcs Raleigh. Envelope for a cycle warranty, cycles Maintenance Handbook, Tires Sizing cards; Single issue The Cyclist, No 348 Vol. 7 from June 16, 1886; 2 circa 1901



**29th Annual Bicycle Auction 6/26/2021**

invoices – both from Birmingham; and an invoice on illustrative letterhead from A. B. Field of Norwich. Vendor for Royal Sunbeam Cycles. Mentions a 24: frame Sunbeam with little Oil Bath, a Bellrock Lamp and a New Hudson cycle. Price list for Merlin and Bob Jackson Cycles. Circa 1970 with Mafac, Campagnolo, T.A., Zeus & Stronglight mentioned; Book – Discovering Old Bicycles by T. E. Crowley. Photographically illustrated. Printed 1973 with acknowledgement of Ned Passey; Souvenir Booklet for the Peterborough Vintage Cycle Club for 2003; Stamford Voices history of Stamford in Lincolnshire with photographic image of cyclists on covers, 2004; Check the photos to see the breadth and scope of this interesting grouping. Very good overall.  
Estimate: 75.00 - 100.00

**666 1898 Juvenile Bycles Catalog**

Catalog of Juvenile Bicycles for the Fay Manufacturing Co. of Elyria Ohio. 1898. Published by Gies & Co. of Buffalo, NY. Lists the 20, 24 & 26" Bicycles. Many illustrations. Includes a separate 1 page insert for the RED CROSS model. 8 ppgs + covers + double sided insert. 6" x 8". Very Good overall.  
Estimate: 75.00 - 100.00



**667 Bicycle Photograph in Sterling Silver Frame**

Sterling Silver frame with an Edwardian Cyclist - Oval footed frame is hallmarked STERLING and weighs 33 grams. 6-1/4" x 4-5/8" with a 1/2" rim. Photo is of a gentleman posing with what appears to be a Raleigh men's safety (note indent at front fork crown). Albumen photograph circa 1914. Very good condition.  
Estimate: 75.00 - 100.00



**668 C. 1930's German Handlebar Mount Clock**

Handlebar Clock by Globus. 2" diameter x 1-1/4" deep. Wind up mechanism. "Heart" shaped design in the top center window goes back and forth as a pendulum. Fits on Handlebars. The correct model and style



as used by some 6 Day bike racers. Made in Germany. Circa 1920 to 1940s. Working condition at time of listing but sold "as is".  
Estimate: 250.00 - 350.00

**669 C. 1900 Pant Clip, Tiffany Silver**

Sterling Silver Tiffany Pant Clip. Hand engraved owner's initials "K K O". Hallmarked: "TIFFANY & Co. - STERLING". With patina. Excellent condition. Estimate: 100.00 - 125.00



**670 Saddle Bags**

Saddle Bags. Hand tooled and beautifully made. The bags themselves are 10-4" at the widest point. Height of bag is 9-1/4". With flap down the height is about 10". Depth – opens to about 3-1/2". Laid flat the bags are about 36". Width across center point going over the carrier is about 4-1/2". Riveted straps and buckle. Circa 1940s-50s. Very good overall. Estimate: 200.00 - 300.00



**671 Book: A Canterbury Pilgrimage**

Book. A Canterbury Pilgrimage by Joseph & Elizabeth Robins Pennell. New York 1885 edition published by Charles Scribner's Sons. 79 Printed pages. Bound in Soft Cover. 6-1/2" x 8-1/4". This is a very early traveling narrative. This is an interesting account of the Pennell's Tricycling voyage from London to Canterbury. Well-illustrated with many cycling scenes and that of the countryside. This, the American Edition is Not commonly found. Likely unread. Spine detached. Very good overall condition.  
Estimate: 75.00 - 100.00



**672 Bicycle Book Lot**

Book Lot of 5. From 1907 onwards; Cycle Building And Repairing as edited by Paul N. Hasluck. First published 1897 with this being the 1907 edition. Hard bound; The Bicycle - A "Project" In Science &





**29th Annual Bicycle Auction 6/26/2021**

Mechanics by F. J. Hill M.Sc. – 1st Edition 1937. Soft Cover; The Complete Cyclist by Harold Moore. Second Edition of 1947, Hard Bound; Cycle Racing by Kenneth Bowden (forward by Reg Harris), Hard Cover, 1st Edition of 1958; The Bicycle In Life Love War And Literature by Seamus McGonagle. 1st Edition of 1968. Hard Cover with dust Jacket. Conditions vary but generally very good. Estimate: 75.00 - 125.00

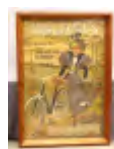
**673 Bicycle Book Lot**

Book Lot of 8. All Hard Bound. Mainly travelogue from 1895 onwards; Sweetheart Travellers by S. R. Crockett. 2nd Edition of 1895; Romance And Reality Of The Puritan Coast by Edmund H. Garrett. Published by Little Brown & Co. of Boston. 1897 1st Edition; Cycling In France by Bernard Newman. Published by Herbert Jenkins Limited of London. First Edition published in 1936; The Visitor's Book by Fitzwater Wray (Kuklos) published by J. M. Dent of London. 1st Edition published in 1937; Round The Island - Sardinia Re-Explored by H. W. Freeman. With Map. Published by Chapman & Hall of London. With Dust Jacket. Likely 1st Edition published 1956; Two Wheels To Adventure – Through Australia by Bicycle by Shirley Duncan. Published by George G. Harrap & Co. of London, Toronto, Wellington and Sydney. With Dust Jacket. 1st London Edition of 1957; Avenue To The Door Of The Dead by Harold Elvin. Published by Anthony Blond Ltd. of London. 1st Edition of 1961. With Dust Jacket; How Many Hills To Hillsboro by Fred Bauer. Published by Hewitt House of Old Tappan, New Jersey. 1st Edition of 1969. With Dust Jacket. Generally very good condition. Estimate: 100.00 - 150.00



**674 Bicycle Poster "THE "JAMES"**

Early framed bicycle poster "THE "JAMES" / Highest Grade Only / Address / Sampson Rd. North / Birmingham". Sight 53 1/2" x 34 1/2". Fair condition. Estimate: 200.00 - 400.00



**675 Greg Lemond Poster**

Cardboard Greg Lemond information poster. 20" x 15". Good condition. Estimate: 25.00 - 35.00



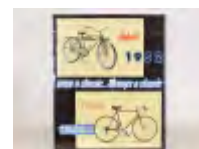
**676 Victor Sign**

Contemporary Victor sheet metal sign. 16" x 12". Good condition. Estimate: 25.00 - 50.00



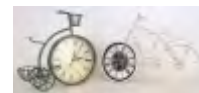
**677 Columbia Poster**

Columbia poster "Columbia 1962 / once a classic...always a classic / Columbia 1986". Overall 18" x 15". Good condition. Estimate: 25.00 - 35.00



**678 Bicycle Clocks**

Lot (2) decorative bicycle clocks. 19 1/2" x 13" and 14" x 13". Good condition. Estimate: 25.00 - 50.00



**679 Bicycle Postcard Lot**

Lot (14) bicycle postcards marked "Ostern 1898". Good condition. Estimate: 25.00 - 35.00



**680 Bicycle Postcard Lot**

Lot (24) vintage postcards. Good condition. Estimate: 50.00 - 75.00



**681 Bicycle Tintypes**

Lot (10) early bicycle tintypes. Includes racer, figures with safety bicycles. Good condition. Estimate: 50.00 - 75.00

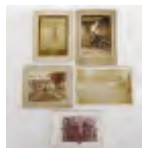


29th Annual Bicycle Auction 6/26/2021

LOT #

**682 Bicycle Photographs**

Lot (5) early bicycle photographs. Figures with safety bicycles. Fair-Good condition. Estimate: 40.00 - 60.00



**683 Decorative Statue of Man on High Wheel**

Decorative statue of man on High Wheel bicycle. 19 1/2" Ht.. Good condition. Estimate: 50.00 - 75.00



**684 Carl Anderson Memorial Trophy Photograph**

Carl Anderson Memorial Trophy presentation photograph. Overall 10" x 12". Good condition. Estimate: 25.00 - 35.00



**685 Misc. Lot**

Lot including Columbia Bicycles card, The Hill Bicycle Store/ Warren Pennsylvania cards, (7) racing medals and bicycle pin. Fair-Good condition. Case not included. Estimate: 50.00 - 75.00



**686 Misc. Lot**

Lot including (2) early tool pouches (fair condition), and Master Lock. Estimate: 25.00 - 35.00



**687 Misc. Lot Bicycle Lamps**

Lot misc. as found bicycle lamps. Estimate: 50.00 - 75.00



**688 Pre-War Rollfast Bicycle**

Pre-War Rollfast bicycle. Fair condition. Estimate: 150.00 - 200.00



**689 Bicycle Bell New Departure Ladies**

Bell – Ladies. Lever marked 'New Departure' on one side and 'E 10 1/2' the other side. Nickel plating in great condition. About 1-3/4" wide. Ring works and has a great sound. Lower clamp is original and has the New Departure logo on the lower clamp (not a strong stamping but discernable). Produced circa 1890-1898. Very good overall. Estimate: 75.00 - 100.00



**690 Bicycle Advertisement Clippings Lot**

Collection of 1890s advertisements, illustrations and cartoons. All neatly disbound from contemporary magazines and journals. Sizes range from about 2-1/4" x 3-1/2" to 6-1/4 x 8-1/8". TONS of graphics. Advertisements (in no particular order) to include Columbia, Hartford Bicycles & Tires, Searchlight lamps, Tinkham Tricycles, Crescent, 20th Century Lamps & Cyclometer, Waverly, Rambler, and Cleveland with many excellent cartoons and drawings. Very good condition for what they are. An instant archive of graphics. Over 100 pieces. Estimate: 50.00 - 75.00



**691 Bicycle Dealer Showcase Magazines**

Bicycling Institute of America Archives. Hardbound "Bicycle Dealer Showcase" magazines. 1975-1981 (7 Volumes). Good condition. Estimate: 25.00 - 50.00



**692 Bicycle Dealer Showcase Magazines**

Bicycling Institute of America Archives. Hardbound "Bicycle Dealer Showcase" magazines. 1975-1981 (7 Volumes). Good condition. Estimate: 25.00 - 50.00



**693 Bicycle Dealer Showcase Magazines**

Bicycling Institute of America Archives. Hardbound "Bicycle Dealer Showcase" magazines. 1972-1976 (5 Volumes). Good condition. Estimate: 25.00 - 50.00



**29th Annual Bicycle Auction 6/26/2021**

**694   Bicycling Institute of America Archives**

Bicycling Institute of America Archives lot. Includes Archive of Julio Capdeponet "Ciclista Uruguay" C. 1928, includes his license, photo, medals and press clippings. Fair-Good condition. Estimate: 50.00 - 100.00



Smithsonian Institution bicycle collection catalog, (2) Cycling Boy Scouts of America and (3) misc. soft cover books, T. W. Norman L.A.W. card with his photograph. Fair-Good condition. Estimate: 50.00 - 100.00

**695   Bicycle Institute of America Archives**

Bicycling Institute of America Archives. Large collection of pins including racing, Olympics and more. Over (250) examples. Estimate: 25.00 - 50.00



**700   Bicycle Institute of America Archives**

Bicycle Institute of America Archives, photographs, mostly racing. Approx. (18) 8" x 12", snap shots and promo handouts. Good condition. Estimate: 25.00 - 35.00



**696   Bicycle Institute of America Archives**

Bicycle Institute of America Archives including pinback buttons (approx. 45 examples), includes rare size Mile-A-Minute Murphy example, (2) cases. Estimate: 200.00 - 300.00



**701   Bicycle Institute of America Archives**

Bicycle Institute of America Archives, photographs including actors: Robert Redford, Sandra Dee, Ernie Kovacks, Lassie, Doris Day, Rosalind Russell, Mary Martin, mostly 8" x 12" (19) pieces. Good condition. Estimate: 25.00 - 50.00



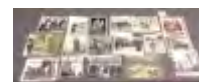
**697   Bicycle Institute of America Archives Lot**

Bicycle Institute of America Archives lot, photographs. Includes promo, vintage, group meetings, large collection of Vintage archive reprints from The Bike News etc.. Fair-Good condition. Estimate: 50.00 - 100.00



**702   Bicycle Institute of America Archives**

Bicycle Institute of America Archives, photographs, mostly Political subjects associated with cycling including LB Johnson, Nixon, Carter and Mrs. Carter (18) pieces. Good condition. Estimate: 25.00 - 50.00



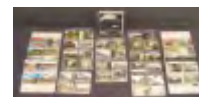
**698   Bicycle Institute of America Archives**

Bicycle Institute of America Archives. Includes medals and ribbons (American & European). Over (48) examples. Estimate: 100.00 - 200.00



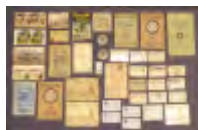
**703   Bicycle Institute of America Archives**

Bicycle Institute of America Archives, pair of binders labeled "Bicycle Stuff" containing approx. (280) bicycle related postcards, and misc. ephemera. Estimate: 300.00 - 400.00



**699   Bicycle Institute of America Archives**

Bicycle Institute of America Archives. Misc. lot including Charles Taylor membership cards C. 1910, from the Union Velocipedique de France, Deutscher Radfahrer and more, (15) Wheelmen membership cards (1900-1930), book "Bicyclist's Dream" (1899), John Player and Sons stamp sets, unopened playing cards, (4) stereoviews, (2) early photographs,



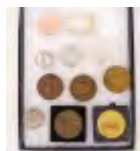
**704   Bicycle Institute of America Archives**

Bicycle Institute of America Archives, includes United States license plates, appears to be examples from near every state. Approx. (150) examples. Fair-Good condition. Estimate: 75.00 - 125.00



**29th Annual Bicycle Auction 6/26/2021****705 Bicycle Institute of America Archives**

Bicycle Institute of America Archives, medals including (3) 1934 "Trans Continental Bicycle Relay", one engraved "Bob Melton". Bronze French Art Nouveau medal (1914), 1976 Wheelman medal, (2) 1976 Olympic #10 sterling silver coins, "Bicycling Craze....in America" medal, Madison mint sterling silver ingot "The High Wheeler". Good condition. Estimate: 50.00 - 100.00

**706 Brooks Saddle**

Bicycle Institute of America Archives, Brooks "Pre Softened" Professional saddle. Good condition. Estimate: 50.00 - 75.00

**707 Bicycle Institute of America Archives**

Bicycle Institute of America Archives, misc. lot including Delta "Winner" lamp, Thumb bell, (6) Delta lamps and more, misc. tools. Fair-Good condition. Estimate: 25.00 - 50.00

**708 Bicycle Institute of America Archives**

Bicycle Institute of America Archives, misc. light weight running gear, includes Campagnolo, Shimano, Schwinn. Good condition. Estimate: 25.00 - 50.00

**709 Bicycle Institute of America Archives**

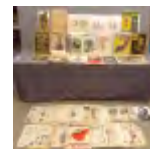
Bicycle Institute of America Archives. Misc. including mugs, prints, ephemera, clothes, patches, large collection of bicycle industry cards, toys, large collection of pinbacks, buttons, playing cards, greeting cards. Good condition. Estimate: 50.00 - 75.00

**710 Misc. Lot**

Bicycle Institute of America Archives, 8 1/2" silverplate trophy, Pairpoint Co., L.A.W. winged wheel design. Early headbadge "Rolls Racer", early whistle. Fair-Good condition. Estimate: 25.00 - 50.00

**711 Bicycle Institute of America Archives**

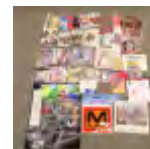
Bicycle Institute of America Archives, 19th c. Le Petit Journals (many early cycling subjects), 19th c. tear outs including Harper's Weekly, Bicycling World, lots of ads, many frame able. Fair-Good condition. Estimate: 100.00 - 200.00

**712 Bicycle Institute of America Archives**

Bicycle Institute of America Archives, original cartoon by Jim "J.R. Williams", I Love Red Too!". 11 1/2" x 12 1/2". Good condition Estimate: 25.00 - 50.00

**713 Bicycle Institute of America Archives**

Bicycle Institute of America Archives, misc. racing ephemera including riders, autographs including Eddy Mercks, Phil Anderson, programs, souvenirs. Estimate: 50.00 - 100.00

**714 Bicycle Institute of America Archives**

Bicycle Institute of America Archives, US DOT ephemera, Touring Maps, Industry Letter Heads and more. Good condition. Estimate: 25.00 - 50.00

**715 Bicycle Institute of America Archives**

Bicycle Institute of America Archives, (12) boxes, hundreds of cycling magazines C. 1970-1990, includes Cycling UK, Bicycle Guide, Bike Report, Bicycle Forum, Bicycle Business Journal, Bicycle USA Almanac, Bicycling, Bicycle Retailer, Bicycle Buyer, Velo, Dirt Rag, On the The Wheel, Bicycle Dealer Showcase, Free Wheeling, Bike





**29th Annual Bicycle Auction 6/26/2021**

World, Public Roads, Triathlete etc..

Estimate: 50.00 - 100.00

**722 Early Century Bell**

Early Century bell. Fair condition. Estimate: 50.00 - 75.00



**716 Bicycle Institute of America Archives**

Bicycle Institute of America Archives, 100's of cycling soft cover books (9 boxes full).

Estimate: 25.00 - 50.00



**723 Misc. Lot**

Misc. lot including boxed decorative bicycle related items, mug etc.. Estimate: 10.00 - 20.00



**717 Bicycle Institute of America Archives**

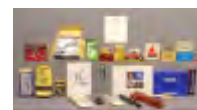
Bicycle Institute of America Archives, approx. (70) hard cover cycling books.

Estimate: 50.00 - 100.00



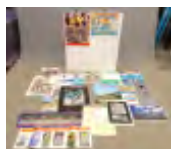
**724 Bicycle Institute of America Archives**

Bicycle Institute of America Archives, misc. NOS parts including Campagnolo, Suntour, Sugino, Shimano and more. Good condition. Estimate: 100.00 - 200.00



**718 Bicycle Institute of America Archives**

Bicycle Institute of America Archives, (30) racing posters including 1987 74th Tour De France and more, (2) autographed (John Howard land speed record holder, Dave Scott). Fair-Good condition. Estimate: 25.00 - 50.00



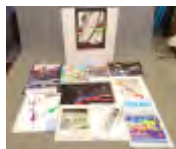
**725 Bicycle Institute of America Archives**

Bicycle Institute of America Archives, (2) bicycle route signs (metal), large 18" x 24" "Bicycle Manufacturers Association of America" sign (plastic). Good condition. Estimate: 25.00 - 50.00



**719 Bicycle Institute of America Archives**

Bicycle Institute of America Archives, racing posters (14) including one autographed by Jonathan Boyer. Estimate: 25.00 - 50.00



**726 Bicycle Institute of America Archives**

Bicycle Institute of America Archives, dealer banners including Bridgestone (28 1/2" x 83"), Bell Helmets (50" x 119"), 7-Eleven Cup Series (25" x 18'), (2) Bicycle Institute of America (fabric), 94" x 14', 58" x 92", 23" x 17 1/2", Bicycle Manufacturers Association of America (fabric), 60" x 91", 5' x 8', Target 100 Million Bicycles (fabric), 5' x 58", New Mark of Quality... (48" x 69"). Good condition. Estimate: 50.00 - 75.00



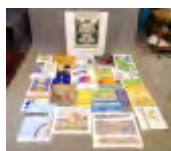
**720 Bicycle Institute of America Archives**

Bicycle Institute of America Archives, bicycle industry posters (29). Estimate: 25.00 - 50.00



**721 Bicycle Institute of America Archives**

Bicycle Institute of America Archives, bicycle posters (41). Estimate: 25.00 - 50.00



**727 Raleigh Tall Frame Ten Speed Bicycle**

C. 1960-70's Raleigh tall frame ten speed bicycle. 26" frame. Good condition. Estimate: 100.00 - 200.00



**29th Annual Bicycle Auction 6/26/2021****LOT #**

---

**728 Picnica Bicycle**

Picnica Japanese commuter bicycle. Good condition. Estimate: 50.00 - 75.00

**729 Folding Bicycle**

Vintage folding bicycle. As found. Estimate: 25.00 - 50.00

**730 Vintage Scooter**

Vintage scooter. Fair condition. Estimate: 50.00 - 75.00

**731 Vintage Bridgestone Bicycle**

Vintage Bridgestone bicycle. 18" frame. Retains rear rack. Good condition. Estimate: 50.00 - 75.00

**732 1936 Rollfast Bicycle**

1936 Rollfast bicycle. 19 1/2" frame. Features front rack, front light, rear rack. Good condition. Estimate: 150.00 - 200.00

**733 Parts Lot**

Misc. tricycle parts and misc. lot. Estimate: 25.00 - 50.00

