



Copake Auction Inc.
PO BOX H - 266 Route 7A
Copake, NY 12516

Phone: 518-329-1142

December 1, 2012 Pedaling History Bicycle Museum Auction 12/1/2012

LOT #

1 19th c. Pierce Poster Framed

19th c. Pierce Poster Framed. Site, 81" x 41".
"Niagara Lith. Co. Buffalo, NY 1898". Superb
condition, probably the best known example.
Estimate: 3,000.00 - 5,000.00



2 46" Springfield Roadster High Wheel Safety Bicycle

C. 1889 46" Springfield Roadster high wheel
safety. Rare, serial #2054, restored, rideable.
Estimate: 4,500.00 - 5,000.00



3 50" Victor High Wheel Ordinary Bicycle

C. 1888 50" Victor "Junior" high wheel, serial
#119, restored, rideable. Estimate: 1,600.00 -
1,800.00



4 46" Gormully & Jeffrey High Wheel Ordinary Bicycle

C. 1886 46" Gormully & Jeffrey High Wheel
"Challenge", older restoration, incorrect step.
Estimate: 1,700.00 - 1,900.00



4a Gormully & Jeffery High Wheel Safety Bicycle

C. 1887 G & J "American Safety". Extremely
rare, about 10 known. Restored. Estimate:
12,000.00 - 14,000.00



5 19th c. Columbia Military Bicycle

C. 1892, Columbia #1, Spring Fork, hard tire
safety, twin tube frame. Includes: Springfield
rifle, ammo box with ammo, Salisbury
headlight, bedroll, saddlebags, bugle. One of
three unique military bikes to be offered in
upcoming sales. Estimate: 4,000.00 - 7,000.00



LOT #

6 Royal Doulton Pitcher and Tumbler

English Doulton Lambeth Pitcher 161, and
Royal-Doulton tumbler 1957. Estimate: 75.00 -
125.00



7 League Shaft Drive Chainless Bicycle

C. 1895 League, first commercial chainless,
rideable, very rare, replaced headbadge, grips
and spokes. Estimate: 3,200.00 - 3,700.00



8 Wood Brothers Boneshaker Bicycle

C. 1869 Wood Brothers boneshaker, 596
Broadway, NYC, acorn pedals, good rideable,
37" x 31" diameter wheels. Estimate: 3,000.00 -
4,000.00



9 Elliott Hickory Hard Tire Safety Bicycle

C. 1891 Elliott Hickory model B. Restored and
rideable, 32" x 26" diameter wheels. Estimate:
2,800.00 - 3,300.00



10 Columbia High Wheel Ordinary Bicycle

C. 1890 Columbia 54" "Expert", serial #12598.
Restored, rideable with incorrect step. Estimate:
1,800.00 - 2,200.00



11 Columbia High Wheel Ordinary Bicycle

C. 1884 Columbia 54" "Standard", Serial
#8372. Restored and rideable. Estimate:
1,800.00 - 2,200.00



December 1, 2012 Pedaling History Bicycle Museum Auction 12/1/2012

LOT #

12 St. Nicholas High Wheel Ordinary Bicycle

C. 1879 St. Nicholas 36" wooden ordinary.
Replaced pedals and saddle. Estimate: 1,200.00
- 1,500.00



13 Telegram High Wheel Safety Bicycle

C. 1892 Telegram, patented by Frank H. Bolte, made by Sercombe-Bolte, Mfg Co. Milwaukee, WI. Front wheel driven, 30" x 24" diameter wheels. Only known example, restored and rideable. Illustrated in Collecting and Restoring Antique Bicycles by G. Donald Adams (fig. 7-34, page 218). Estimate: 5,500.00 - 6,500.00



14 Mary Gregory Style Syrup

19th c. German Mary Gregory style blown glass syrup. Estimate: 25.00 - 50.00



15 19th c. German Lithopane Stein

19th c. German "Musterschultz" with comical Lithopane. Estimate: 200.00 - 300.00



16 High Wheel Ordinary Bicycle

42" wooden wheel, reproduction?. Rideable. Estimate: 400.00 - 600.00



17 Bicycle with Sidecar

C. 1915 pneumatic bicycle with sidecar. Partial restoration. Estimate: 1,200.00 - 1,500.00



18 C. 1820 Horn Snuff Box

C. 1820 horn snuff box with hobby horse motif. 3" diameter Estimate: 200.00 - 300.00



LOT #

19 Bicycle Themed Sterling and Enamel Spoons

Cased set of English sterling and enamel spoons "Bath Road Club". 156 grams Estimate: 100.00 - 150.00



20 Tintype with Cyclists

Tintype with cyclists 3" x 2 3/4". Estimate: 50.00 - 75.00



21 Bicycle Lock Lot

Lot of four locks. Estimate: 25.00 - 45.00



22 Papier Mache Snuff Box

19th c. papier mache snuff box 2 3/4" x 1 1/2". Estimate: 100.00 - 200.00



23 Bicycle Lock Lot

Lot of two rare bicycle locks. Estimate: 50.00 - 100.00



24 Iver Johnson Men's Hard Tire Safety Bicycle

C. 1890 Iver Johnson Men's hard tire safety, 30" wheels, nice restoration, rideable. Estimate: 2,800.00 - 3,100.00



25 Child's Hard Tire Safety Bicycle

C. 1891 EC Meacham Arms Co., St .Louis, MO. Child's hard tire safety. 22" wheels. Bob Jameson restoration. Estimate: 1,200.00 - 1,600.00



December 1, 2012 Pedaling History Bicycle Museum Auction 12/1/2012

LOT #

26 French Transferware Plate Lot

Set of 9 French transferware plates 7 3/4" "HBCM". Estimate: 100.00 - 200.00



27 National Hard Tire Safety Bicycle

C. 1890 National Women's hard tire safety. Needs saddle leather, good condition, serial #395. Estimate: 2,600.00 - 2,800.00



28 Majolica Plate

19th c. Majolica plate 7 3/4" diameter. Estimate: 40.00 - 60.00



29 Porcelain Lot

Lot of porcelain including scarce Japanese decorated tea cup. Estimate: 50.00 - 75.00



30 Porcelain Lot

Lot of three pieces of bicycle decorated porcelain. Estimate: 50.00 - 75.00



31 50" Columbia High Wheel Ordinary Bicycle

C. 1888 Columbia 50" "Volunteer", serial #445. Restored and rideable. Estimate: 1,700.00 - 2,000.00



32 Porcelain Lot

Lot: three pieces of bicycle decorated porcelain. Estimate: 50.00 - 75.00



LOT #

33 Leather Tool Pouch Lot

Collection of nine leather tool pouches (one signed Columbia). Estimate: 50.00 - 100.00



34 Bicycle Advertising Print

Columbia bicycle Advertising disbound print. Site 11 1/2" x 9". Estimate: 40.00 - 60.00



35 Bicycle Game

19th c. "Bicycle The Race" game. Estimate: 50.00 - 100.00



36 Sheet Music Lot

Lot of two pieces of sheet music. 13 1/4" x 10". Estimate: 25.00 - 50.00



37 Sheet Music

19th c. sheet music 13" x 10". Estimate: 25.00 - 50.00



38 Chilion Pneumatic Bicycle

C. 1900 Chilion wooden frame men's pneumatic. Original condition, w/ lamp. Estimate: 1,800.00 - 2,100.00



39 Vintage Sheet Music Lot

Lot of two pieces of vintage sheet music. Estimate: 20.00 - 30.00



40 Bicycle Store Display

Vintage bicycle store display. Cardboard 10" x 12". Estimate: 25.00 - 35.00



December 1, 2012 Pedaling History Bicycle Museum Auction 12/1/2012

LOT #

41 Sheet Music

Lot of two pieces of 19th c. sheet music.
Estimate: 20.00 - 30.00



42 NOS Bicycle Locks

Lot of two NOS boxed bicycle locks. Estimate:
25.00 - 50.00



43 Sheet Music Lot

Lot of three pieces of early sheet music 14" x 10". Estimate: 25.00 - 35.00



44 Columbia Men's Chainless Bicycle

C. 1917 Columbia Men's Chainless. Model 704 w/ suspension. Restored. Estimate: 1,100.00 - 1,200.00



45 Parts Cards Lot

Lot of two NOS parts cards. Estimate: 25.00 - 50.00



46 Sheet Music Lot

Lot of two pieces of early sheet music 14" x 11". Estimate: 25.00 - 50.00



47 Sheet Music Lot

Lot of three pieces of early sheet music 14" x 10" - 10" x 8 1/2". Estimate: 25.00 - 35.00



48 Bicycle Toy Lot

Lot including early puzzle, model kit, "Raleigh Cruising Game" and six day bike race game. Estimate: 30.00 - 50.00



LOT #

49 Porcelain Cup

Porcelain Cup Tiger on Safety Bike "BT CO, GERMANY". Estimate: 25.00 - 35.00



50 Bicycle Toy

String balance toy "Fewo Co.". Estimate: 25.00 - 35.00



51 Children's Book Lot

Lot of three 19th c. children's books. Estimate: 25.00 - 35.00



52 Staffordshire Lot

Lot of two Staffordshire fairings (whistles) along with a vase 3 3/4" Ht. Estimate: 50.00 - 100.00



53 Bicycle Parts Lot

NOS lot including "MeFra" pedal reflector, "Grip-o-lite" grips and "handgards". Estimate: 40.00 - 60.00



54 Quadrant Tricycle

C. 1886 Quadrant Tricycle, serial # 2343, 36" x 24". Incorrect saddle, over painted, rideable. Estimate: 6,500.00 - 7,500.00



55 Bicycle Parts Lot

NOS lot including "Red Fox" tube, "the Wald BB" repair tool, "Diamond" chain etc. Estimate: 25.00 - 45.00



December 1, 2012 Pedaling History Bicycle Museum Auction 12/1/2012

LOT #

56 NOS Delta Part

NOS Delta rocket and horn (model A2170).

Estimate: 30.00 - 50.00



57 French Plate Lot

Set of four French plates 7 3/4" diameter.

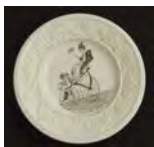
Estimate: 50.00 - 75.00



58 19th c. Transferware Plate

Early 19th c. English transferware plate 7 1/2".

Estimate: 75.00 - 125.00



59 Bicycle Speedometer

NOS "Stewart-Warner Cadet" bicycle speedometer. Estimate: 25.00 - 50.00



60 Postcard Lot

Lot of assorted post cards. Estimate: 50.00 - 100.00



61 (2) Bicycle Head Lamps

Oil head lamp lot: "Morning Star" and "The Everlit". Estimate: 50.00 - 75.00



62 Gormully & Jeffery Hard Tire Safety Bicycle

C. 1891 Gormully & Jeffery American Lady's Rambler. Restored, rideable. Estimate: 1,800.00 - 2,100.00



63 (2) Bicycle Head Lamps

Oil head lamps: "The Front Light", M.B. Co. NY and "B & R Sparkler". Estimate: 50.00 - 100.00



LOT #

64 (2) Bicycle Head Lamps

"KATY" Cycle Lane and unmarked lamp with bracket. Estimate: 50.00 - 100.00



65 American Rambler Hard Tire Safety Bicycle

C. 1890 American Rambler men's HTS, 26" x 30" diameter wheels, sprung frame. As found, rear wheel needs spokes. Estimate: 2,800.00 - 3,200.00



66 (2) Bicycle Head Lamps

"DIETZ" and "Light Weight" Seiss Mfg, Toledo head lamps. Estimate: 50.00 - 75.00



67 (2) Bicycle Head Lamps

Head Lamps: "Miller" and "Lightweight" by Seiss Mfg. Estimate: 50.00 - 75.00



68 (2) Bicycle Head Lamps

Head Lamps: "Powell and Hanmer" "HOROSCOPE" and "Miller Cyclight". Estimate: 50.00 - 100.00



69 Gormully & Jeffery Rambler Bicycle

C. 1893 Gormully & Jeffery pneumatic Rambler model 11, tall frame. Estimate: 900.00 - 1,100.00



70 (2) Bicycle Head Lamps

Head Lamps: "The Everlit" by Edw. Miller and unknown. Estimate: 50.00 - 75.00



December 1, 2012 Pedaling History Bicycle Museum Auction 12/1/2012

LOT #

71 Stearns Tandem Bicycle

C. 1898 Stearns "Yellow Fellow". Tandem convertible, dual steer, plunger brake. Restored, missing 1 grip. Estimate: 800.00 - 1,200.00



72 Columbia Chainless Bicycle

C. 1989 Columbia Chainless-Model #50 men's, original nickel, Christie saddle. Estimate: 500.00 - 700.00



73 New Mail Cushion Tire Bicycle

C. 1891 New Mail Lady's cushion tire, made by William Read & Sons. Restored lacks grips and pedal rubber. Estimate: 2,500.00 - 3,200.00



74 Wheelman's Pin on Compass

Wheelman's Pin on Compass. Estimate: 40.00 - 60.00



75 Lot (2) Medals

Commonwealth Century Medal with 20 bars 1895-97 (Boston). Estimate: 150.00 - 250.00



76 Gold Bicycle Medal

Bicycle medal approx. 14k, 13 grams total weight. Estimate: 200.00 - 300.00



77 Pacific Pneumatic Bicycle

C. 1896 Pacific pneumatic, made by Pacific Bicycle Company, Los Angeles, CA (1895 - 1898). Bell and cyclometer. Bob Jameson restoration. Estimate: 700.00 - 900.00



LOT #

78 Gold Bicycle Medal

Bicycle medal possibly 14k, 19 grams total weight. Estimate: 250.00 - 350.00



79 Gold Filled Medal

Gold filled medal with ribbon. Estimate: 25.00 - 50.00



80 Orient Tandem Bicycle

C. 1897 Orient Tandem, Waltham mfg co., double-men's. Links missing for double steering, good original as described. Estimate: 400.00 - 600.00



81 Lot (4) Medals

Medals: (1) Cycle Trades of America Award in case, (1) The White King of Wheels, (1) pendant with plane, auto and bicycle, (1) medal with safety rider. Estimate: 50.00 - 75.00



82 Lot (4) Medals

Medals and pins: New York Journal, (2) L.A.W. New York State Division, NYS Division L.A.W. Brooklyn/Coney Island 1895. Estimate: 25.00 - 45.00



83 Misc. Lot

1970 \$10 Olympic Canada coin, 19th c. bronze safety racing medallion, second prize relay Illinois 1900. Estimate: 50.00 - 100.00



84 Child's Boneshaker Bicycle

C. 1878 Child's Boneshaker bicycle, cast frame, red and gray, 24" x 20" diameter wheels. Estimate: 1,500.00 - 2,200.00

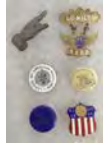


December 1, 2012 Pedaling History Bicycle Museum Auction 12/1/2012

LOT #

85 Lot (6) Medals & Buttons

Lot 6 Medals and Button: R. I. Division 1898, Worcester 1895, Celluloid & Enamel Buttons L.A.W. Good Roads, 100 Miles 1902, L.A.W. Enamel. Estimate: 75.00 - 125.00



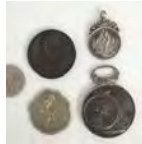
86 (4) Bicycle Medals

(4) bicycle medals: (1) silver, (3) bronze. Estimate: 25.00 - 50.00



87 (4) Bicycle Medals

(4) Bicycle medals 62 grams sterling silver. Estimate: 50.00 - 75.00



88 Columbia Hard Tire Safety Bicycle

C. 1890 Columbia Lady's HTS. Sprung front fork. Restored (with chrome). Estimate: 2,500.00 - 2,800.00



89 Draisine Reproduction Bicycle

Draisine reproduction, 30" x 30" diameter wheels. Ridden by Carl Burgwardt in parades. Estimate: 700.00 - 900.00



90 Graphic Pneumatic Bicycle

C. 1898 Graphic Pneumatic Lady's Bicycle, Graphic Cycle Company, NY. Excellent original condition. Estimate: 400.00 - 600.00



91 Musselman Coaster Brake Display

Musselman Coaster Brake Display. Estimate: 50.00 - 75.00



LOT #

92 Tigress Lady's Pneumatic Bicycle

C. 1897 Tigress Lady's pneumatic, w/ lamp. Stoddard, Dayton, OH. Restored. Estimate: 400.00 - 600.00



93 Gormully & Jeffery Pneumatic Bicycle

C. 1896 G & J men's model 20. With very unusual accessory: removable walking cane saddle. Tool bag, bell, lamp, wood handlebars. Excellent original condition. Estimate: 900.00 - 1,100.00



94 Spillane Reproduction High Wheel Ordinary Bicycle

28" child's Spillane Whitney reproduction high wheel bicycle. Excellent rider. Estimate: 400.00 - 500.00



95 Star High Wheel Safety Bicycle

C. 1886 Special 45" Pony Star high wheel bicycle, serial #1392, HB Smith Machine Company, Smithville, NJ. Rare additional step, older restoration, rideable. Estimate: 4,500.00 - 5,500.00



96 Keating Pneumatic Bicycle

C. 1894 Keating men's pneumatic, Keating Wheel Company, Holyoke, MA. Old tires, unique frame, restored. Estimate: 700.00 - 900.00



97 Crescent Chainless Pneumatic Bicycle

C. 1899 Crescent #20 lady's chainless, Western Wheel Works, Chicago, IL. Restored, rideable. Estimate: 700.00 - 900.00



December 1, 2012 Pedaling History Bicycle Museum Auction 12/1/2012

LOT #

98 Shire Boneshaker Bicycle

C. 1878 Shire Boneshaker w/ unique period bell, 41" x 31" diameter tire, Manufactured in Detroit, MI. Original condition, recovered saddle. Estimate: 3,500.00 - 4,500.00



100 Elgin Bluebird Balloon Bicycle

C. 1937 Elgin Bluebird balloon bicycle. Older restoration. Estimate: 4,500.00 - 6,500.00



101 Victor Cushion Tire Safety Bicycle

C. 1890 Victor Model C spring fork cushion tire safety #31054. Wrong saddle, restored. Estimate: 4,000.00 - 5,000.00



102 Simpson Ice Bicycle

C. 1900 "Saturn" by GH Simpson ice bicycle conversion. Lacks chain, loose chain ring. Estimate: 1,200.00 - 1,500.00



103 Old Hickory Pneumatic Bicycle

C. 1898 Old Hickory made by Tonk Mfg. Co. Chicago, IL. Wooden framed lady's pneumatic. Christy saddle, restored. This is supposedly the first American ladies wood safety. Estimate: 2,300.00 - 2,600.00



104 Gold and Ruby Bicycle Medal

Gold three part medal with ruby. Approx. 14k, 11 grams total weight. Signed "Wendeli" with original leather case. Estimate: 200.00 - 300.00



LOT #

105 3 Piece Mantel Clock

3 Piece Mantel Clock w/Key signed "P. deSoete". Estimate: 250.00 - 350.00



106 Boneshaker Mantel Clock

Boneshaker mantel clock. Estimate: 100.00 - 200.00



107 Highwheel Bicycle Hub Lamp

Hub Lamp, unique trapazoidinal shape, Chicago Burner. Estimate: 400.00 - 600.00



108 Gormully and Jeffery Bicycle Lamp

Gormully and Jeffery high body (6") hard tire safety oil lamp. Estimate: 250.00 - 450.00



109 Lucas Highwheel Hub Lamp

C. 1885 JC Lucas "King of the Road" Highwheel bicycle lamp with cracked side lens. Estimate: 800.00 - 1,200.00



110 Chicago "Headlight" Bicycle Lamp

Chicago "Headlight" oil lamp. Estimate: 100.00 - 200.00



111 High Wheel Hub Lamp with Cyclometer

C. 1883 "Columbia Queen of the Night" high wheel hub lamp with cyclometer. Estimate: 2,000.00 - 4,000.00



December 1, 2012 Pedaling History Bicycle Museum Auction 12/1/2012

LOT #

112 Barrett Side by Side Bicycle

C. 1980 Barrett side by side sociable tandem.
New condition. Estimate: 300.00 - 500.00



113 Lucas Bicycle Lamp

Jos Lucas & Sons - King of the Road Holophote bicycle lamp - "Premier Cycle Co, New York".
Estimate: 200.00 - 400.00



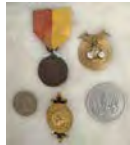
114 Bicycle Medals

C. 1906 - 1910 (7) connected silver and enamel medals. "STERLING, NY... ROBBINS CO ATTLEBURO". Estimate: 50.00 - 75.00



115 Bicycle Medals

(3) medals and aluminum token. Estimate: 25.00 - 50.00



116 Barnes White Flyer Pneumatic Bicycle

C. 1896 Barnes White Flyer, ladies, model #23 pneumatic. Manufactured in Syracuse, NY.
Very good original condition. Estimate: 800.00 - 900.00



117 Ephemera Lot

Ephemera lot. Estimate: 25.00 - 35.00



118 Terrot Pneumatic Bicycle

C. 1904 Terrot men's pneumatic bicycle with rare 2 Speed and tool case. So called "retro-direct" pioneered by Paul de Vivie a.k.a. "Velocio". Pedal backwards to go up hill.
Restored. Estimate: 1,500.00 - 1,800.00



LOT #

119 Victor Pneumatic Racer Bicycle

C. 1895 Victor men's pneumatic racer.
Restored by Bob Jameson. Estimate: 1,500.00 - 1,800.00



120 Invalid Tricycle

C. 1890 Invalid tricycle, with wicker seat.
Includes bell. Rideable. Estimate: 300.00 - 400.00



121 Black Diamond Pneumatic Bicycle

C. 1898 Black Diamond pneumatic bicycle, Searls Mfg Co., Newark, NJ. Vertical stem handlebar. As found original. Estimate: 700.00 - 900.00



122 Bicycle Head Lamp

C.M. Hall Solar calcium head lamp, model S, Pat. 1896-99. Estimate: 50.00 - 100.00



123 Bicycle Head Lamp

Lucas "Silver King", oil head lamp. Estimate: 100.00 - 200.00



124 Bicycle Head Lamp

"The Neverout", Rose Mfg. calcium head lamp with bracket. Estimate: 50.00 - 100.00



125 Ingo-Bike

C. 1933 early model Ingo-Bike. Manufactured by Ingersoll Div. of the Borg Warner Corp.
Older paint. Estimate: 300.00 - 400.00



December 1, 2012 Pedaling History Bicycle Museum Auction 12/1/2012

LOT #

126 Bicycle Head Lamp

"The Buffalo" head lamp by Schoverling Day & Gales, NY. Estimate: 50.00 - 100.00



127 Cleveland Pneumatic Bicycle

C. 1898 Cleveland lady's pneumatic, manufactured by H.A. Lozier & Co. Cleveland, OH. Fixed gear, display tires, nice original. Estimate: 400.00 - 600.00



128 Bowden Spacelander Bicycle

C. 1960 Bowden "Spacelander" bicycle, white fiberglass, manufactured by, Bomard Industries. Excellent original condition. Estimate: 4,000.00 - 5,000.00



129 Bicycle Head Lamp

Solar calcium head lamp, The Badger Brass Co. Estimate: 50.00 - 100.00



130 Bicycle Head Lamp

Miller Majestic calcium head lamp. Estimate: 50.00 - 100.00



131 Bicycle Head Lamp

Bauer, Germany, head lamp. Estimate: 50.00 - 75.00



132 Waverly Pneumatic Bicycle

C. 1896 Waverly men's pneumatic safety, manufactured by Indiana Bicycle Co., Indianapolis, IN. Serial #111625. Good original condition. Estimate: 500.00 - 700.00



LOT #

133 Bicycle Head Lamp

Solar calcium head lamp, manufactured by, The Badger Brass Co. Note unusual handle grip. PAT. 1896-99. Estimate: 75.00 - 150.00



134 BSA Paratrooper Bicycle

World War two BSA Paratrooper folding bicycle. Nice original. Estimate: 400.00 - 500.00



135 Schwinn Paramount Lightweight Bicycle

C. 1938 Schwinn Paramount track bicycle. Includes shoes and helmet. Raced by Herb Day. Estimate: 300.00 - 500.00



136 Crescent Pneumatic Bicycle

C. 1899 Crescent men's pneumatic model 51 w/travel case. Manufactured by, Western Wheel Works, Chicago, IL. New Departure coaster brake, lamp, restored. Estimate: 600.00 - 750.00



137 Silver King LUCAS oil head lamp

Silver King LUCAS oil head lamp. Estimate: 50.00 - 75.00



138 High Wheel Bicycle Head Lamp

C. 1878 Dean Loves Comet Pickwick head lamp. Estimate: 100.00 - 200.00



139 Bicycle Head Lamp

Electra calcium model B head lamp. Estimate: 75.00 - 125.00



December 1, 2012 Pedaling History Bicycle Museum Auction 12/1/2012

LOT #

140 Bicycle Head Lamp

Bridgeport oil lamp. Excellent condition.
Estimate: 150.00 - 350.00



141 Monark Silver King Bicycle

C. 1937 Monark Silver King. Aluminum, speedo, rack, locking fork, pump. Estimate: 200.00 - 400.00



142 Bicycle Head Lamp

Hard tire safety "The Pilot" oil lamp (English).
Estimate: 100.00 - 300.00



143 Water Bicycle

C. 1917 water bicycle, good original condition.
Estimate: 1,100.00 - 1,400.00



144 Bicycle Head Lamp

Solar cycle oil lamp with box, "The Badger" Brass MFG. Co. Estimate: 75.00 - 125.00



145 Bicycle Head Lamp

Salisbury #3 Oil Lamp, No label. Estimate: 250.00 - 350.00



146 Telegram Pneumatic Bicycle

C. 1895 Telegram ladies' pneumatic. Includes tool box and stamped saddle. Manufactured in Milwaukee. Very good original. Estimate: 400.00 - 600.00



LOT #

147 Bicycle Head Lamp

Solar carbide lamp with box. Estimate: 100.00 - 200.00



148 Bicycle Head Lamp

Oil head lamp, "Never Out" by Rose Mfg. Co. includes box. Estimate: 75.00 - 125.00



149 Wolf American Tandem Tricycle

C. 1899 Wolf American tandem tricycle sociable, manufactured in NY. Repainted, wrong pedals. Estimate: 1,500.00 - 1,800.00



150 Bicycle Head Lamp Lot

Lot (5) head lamps: New Brilliant Freeman Thomas (cracked lens), Lucas-Calcia Cadet (no bracket, cracked lens), Twentieth Century, The Eclipse and The Everlit. Estimate: 50.00 - 100.00



151 Bicycle Head Lamp

Columbia Model C calcium head lamp.
Estimate: 75.00 - 150.00



152 Lucas Calcium Generator

Lucas calcium carbide generator. Estimate: 50.00 - 75.00



153 Irish Mail Quadracycle

C. 1930's Irish Mail w/ steering wheel, differential steering, transmission. Estimate: 200.00 - 300.00



December 1, 2012 Pedaling History Bicycle Museum Auction 12/1/2012

LOT #

154 Bicycle Head Lamp

Lohmann-Perfecta calcium head lamp with bracket. Estimate: 75.00 - 150.00



155 Bicycle Head Lamp

Matthews and Willard oil head lamp with bracket. Estimate: 75.00 - 125.00



156 Bicycle Head Lamp

Lucas Calcia Cadet calcium head lamp. Estimate: 50.00 - 100.00



157 Bicycle Head Lamp

Search Light head lamp. Estimate: 50.00 - 75.00



158 Kodak Bicycle Camera

Kodak Bicycle Camera with bicycle case and catalog photocopy. Estimate: 150.00 - 250.00



159 Wooden Bicycle Fork Patterns

Lot (5) wooden toolmakers bicycle fork patterns. Estimate: 125.00 - 200.00



160 Velocipede Cup

19th c. English ceramic transfer decorated Velocipede cup. Estimate: 75.00 - 125.00



161 Bicycle Saddle

Christy saddle, ladies No. 9. Restored. Estimate: 50.00 - 100.00



LOT #

162 Bicycle Saddle

Sager saddle with unique strap webbing. Estimate: 50.00 - 100.00



163 Henley Scooter

C. 1920's Henley Scooter "Roll-a-bout". Estimate: 50.00 - 100.00



164 Saddle Cover

19th c. saddle cover. 1st Booby Prize, L. C. C. Race 1889. Estimate: 100.00 - 200.00



165 Columbia Sidewalk Bicycle

C. 1930's Columbia sidewalk bicycle. Estimate: 100.00 - 150.00



166 Saddle Cover

Saddle cover with reed center. Estimate: 50.00 - 75.00



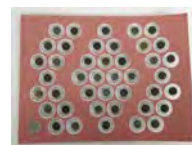
167 Irish Mail Quadracycle

C. 1910 Irish Mail, wood scooter. Hill Standard, Indiana. Nice original. Estimate: 200.00 - 250.00



168 L.A.W. Buttons

Board display of L.A.W. Buttons. Estimate: 50.00 - 75.00



169 High Wheel Ordinary Buttons

Board display of high wheel ordinary buttons. Estimate: 50.00 - 75.00



December 1, 2012 Pedaling History Bicycle Museum Auction 12/1/2012

LOT #

170 Desk Pen Holder

19th c. spelter metal desk, pen holder. Estimate: 30.00 - 50.00



171 Sturmey Archer Display

Sturmey Archer 3 speed dealer display. Estimate: 50.00 - 100.00



172 Schwinn Black Phantom Balloon Bicycle

C. 1955 Schwinn Black Phantom 20" boys bicycle. Restored. Estimate: 400.00 - 600.00



173 Indian Pneumatic Bicycle

C. 1915 Indian men's tank model pneumatic bicycle with head lamp. Manufactured by Hendee, Springfield, MA. Restored. Estimate: 800.00 - 1,200.00



174 Bicycle Saddle

Christy saddle. Restored. Estimate: 50.00 - 100.00



175 Billy Boy - Sidewalk Bicycle

C. 1930 Billy Boy - Sidewalk Bicycle with disk wheels. Restored. Estimate: 150.00 - 250.00



176 Bicycle Medal Lot

(4) German bicycle medals. Estimate: 25.00 - 45.00



LOT #

177 Bicycle Medal Lot

Lot (4) medals: Amateur Bicycle League, Cycle Trades, Ohio Amateur Bicycle League, G. Osgood Champion. Estimate: 50.00 - 75.00



178 Daycycle Pneumatic Bicycle

Men's daycycle pneumatic. Original condition Estimate: 700.00 - 800.00



179 Bicycle Medal Lot

Lot (6) Italian cyclist medals. Estimate: 25.00 - 35.00



180 L.A.W. Enamels Lot

Lot (5) L.A.W. Enamel Discs: Toledo, Penna., '98/'99, (2) L.A.W. Estimate: 25.00 - 50.00



181 Bicycle Head Lamp

Radsonne German bicycle head lamp. Estimate: 50.00 - 100.00



182 Emblem Pneumatic Safety Bicycle

C. 1896 Emblem women's safety pneumatic, manufactured by WG Shack, Buffalo, NY. Original condition as found. Estimate: 200.00 - 400.00



183 Bicycle Head Lamp

Bicycle oil head lamp, "Jim Dandy" manufactured by: Plume & Atwood Mfg. Co. Estimate: 50.00 - 75.00



December 1, 2012 Pedaling History Bicycle Museum Auction 12/1/2012

LOT #

184 Victor Victoria Pneumatic Bicycle

C. 1896 Victor Victoria pneumatic bicycle.
Restored. Estimate: 500.00 - 700.00



185 Bicycle Head Lamp

C. 1897 oil head lamp, B & R. Estimate: 40.00 - 60.00



186 Bicycle Head Lamp

French Candle #1 head lamp. Estimate: 75.00 - 125.00



187 Bicycle Head Lamp

French Candle #2 head lamp. Estimate: 75.00 - 125.00



188 Schwinn New World Racer Bicycle

C. 1930, Heil Brothers "Champion", lightweight racer. Schwinn New World frame. Good original condition. Estimate: 500.00 - 700.00



189 Bicycle Head Lamp

Twentieth Century oil head lamp with bracket. Estimate: 50.00 - 100.00



190 Western Union Pneumatic Bicycle

C. 1895 Western Union Sturmer men's pneumatic. With lamp, catalog copy, and western union sign. Original condition. Estimate: 400.00 - 600.00



LOT #

191 Victoria Pneumatic Bicycle

C. 1897 Victoria lady's pneumatic, manufactured by Overman Wheel company, Chicopee, MA. Suspension saddle, old tires. Restored. Estimate: 400.00 - 600.00



192 Bicycle Head Lamp

Imperial oil head lamp. Estimate: 50.00 - 75.00



193 Bicycle Head Lamp

Candle lamp. Estimate: 50.00 - 75.00



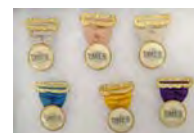
194 Bicycle Head Lamp

"Columbia" carbide head lamp. Manufactured by Hine Watt. Estimate: 75.00 - 125.00



195 Bicycle Timer Ribbon Lot

Lot: (6) "Timer" Medals/Ribbons. "Whitehead & Hoag Co., JUNE 12, '94". Estimate: 25.00 - 50.00



196 Bicycle Medal Lot

(2) Medals: Boston Spring Meet & Worcester 1892. Estimate: 50.00 - 75.00



197 LAW Button Lot

Lot: L.A.W. buttons. (12) steel buttons (1) gold button with ruby. Estimate: 24.00 - 45.00



198 Bicycle Medal Lot

Lot (4) Medals: Springfield Meet 1883, L.A.W. Conn. Division, Highwheel & Trike, Rider taking header Phila. Estimate: 40.00 - 60.00



December 1, 2012 Pedaling History Bicycle Museum Auction 12/1/2012

LOT #

199 Medal and Button Lot

Lot (7) Mass. Division Medals & Buttons:
1892, 93, 94, 95, 97, 98. Estimate: 100.00 -
175.00



200 J. C. Higgins Balloon Bicycle

C. 1957 J. C. Higgins Men's, "deluxe" balloon
bicycle, with speedometer. Restored. Estimate:
400.00 - 600.00



201 German Stein Lot

Lot: Glass German Steins, 1921 "Lengenfeld".
Estimate: 50.00 - 75.00



202 German Mug and Stein Lot

Lot: German stein and mug with safeties.
Estimate: 25.00 - 45.00



203 German Stein

German stein 1/2 L. Estimate: 50.00 - 75.00



204 German Stein Lot

Lot: German Steins "Alt-Grenzau Western
Germany". Estimate: 25.00 - 50.00



205 German Mug

German mug "RADFAHR-VEREIN,
HELVETIA MUNCHEN 1004". 1/2 L.
Estimate: 25.00 - 50.00



LOT #

206 German Stein Lot

Lot: German Stein 1909
"JUBILAUMS-BUNDESTAG MUNCHEN
1909 16-20 JULI", Blue Glaze with Highwheel.
1 L. and 1/2 L. Estimate: 50.00 - 75.00



207 German Glass Stein and Mug Lot

Lot: German glassware (3) Steins, (1) Glass.
Estimate: 25.00 - 50.00



208 German Bicycle Trophy

German trophy with removable top. "1 Preis
Paul Pfeil Hauptfahr". Estimate: 50.00 - 75.00



209 German Stein

German stein with safety and ribbon. 1/2 L.
Estimate: 50.00 - 75.00



210 German Stein

German Stein with safety. Estimate: 50.00 -
100.00



211 German Stein Lot

Lot (2) German steins, one with locking top,
other has no top. Estimate: 50.00 - 75.00



212 German Stein Lot

Lot (2) German Steins. Estimate: 50.00 - 100.00



213 German Stein

German Stein with safety. 1/2 L. Estimate:
100.00 - 175.00



December 1, 2012 Pedaling History Bicycle Museum Auction 12/1/2012

LOT #

214 German Stein

German stein with safety. 1/2 L. Estimate: 50.00 - 75.00



215 German Stein

German stein with transfer decorated safety rider. 1/2L. Estimate: 75.00 - 125.00



216 Pitcher - Velocipede

Pitcher - Velocipede "C & E BICYCLES". Estimate: 50.00 - 125.00



217 Beeker Lot

Lot: German Pewter, glass and silver plate beekers. Estimate: 50.00 - 75.00



218 German Mettlach Stein

German Mettlach Stein #1566. 1/2L. Estimate: 250.00 - 350.00



219 German Mettlach Stein

German Mettlach Stein #2140, safety rider, "PRO-SIT." 1/2L. Estimate: 100.00 - 200.00



220 German Stein

German stein with safety. 1/2L. Estimate: 75.00 - 125.00



221 Daisy Bell Pitcher and Mug

Daisy Bell Pitcher and Mug "Crown Devon Fielding's England". Estimate: 75.00 - 125.00



LOT #

222 German Stein

German Stein - "J. REINMANN MUNCHEN, GESETZLICH GESCHUTZT". 1/2L. Estimate: 100.00 - 175.00



223 German Stein

German Stein with safety. 2L. Estimate: 100.00 - 200.00



224 German Stein

German stein, with safety. "DEMELDORADO R.C. GEW. VON HERRN L, GROTE". 2L. Estimate: 300.00 - 500.00



225 Pocket Watch

Pocket watch with cyclist. Not running. Estimate: 50.00 - 75.00



226 Wood Shelf

Wood wall shelf with mirror and high wheel motif. Estimate: 50.00 - 100.00



227 Cycle Infantry Drive Regulations Book Lot

Lot: 1892 Cycle Infantry Drive Regulations Book and 4 L.A.W. Membership cards. Estimate: 25.00 - 50.00



228 Cabinet Card / Photography Lot

Lot (2) Cabinet Cards, Tin Type, Photograph. Kids with tricycles. Estimate: 50.00 - 75.00



December 1, 2012 Pedaling History Bicycle Museum Auction 12/1/2012

LOT #

229 Photography Lot

Lot (7) photographs. Estimate: 75.00 - 125.00



230 Photography Lot

Lot (2) Photographs: Rhodes Trio World Tour safety and 2 cabinet cards. Estimate: 50.00 - 100.00



231 Schwinn "Pea Picker" Bicycle

Schwinn 5-speed stick, Stingray, spring front fork. Good original condition. Estimate: 300.00 - 500.00



232 Cabinet Card

Cabinet Card: Columbia Expert "Dunklee and Bau, Northampton, MA, Brattleboro, VT, Greenfield, MA". Estimate: 50.00 - 75.00



233 Cabinet Card

Cabinet Card: Columbia Light Roadster 1885-1886 "Nesbit, Bloomsburg, PA". Estimate: 50.00 - 75.00



234 Cabinet Card

Cabinet Card: Victor 1885 "Whitewater Goodman Wisconsin". Estimate: 50.00 - 75.00



235 Cabinet Card

Cabinet Card: High wheel ordinary 1883 "Taylor, Rochester, NY". Estimate: 50.00 - 75.00



LOT #

236 Cabinet Card

Cabinet Card: Courtney Machinists 1883 "Bogardus Souvenir Card, New York". Estimate: 50.00 - 75.00



237 Cabinet Card

Cabinet Card: Man with High Wheel. "Partridge's, Portland, OR". Estimate: 50.00 - 75.00



238 Cabinet Card

Cabinet Card: Gormulley & Jeffery American Champion 1885 "Anton Rohde Chicago". Estimate: 50.00 - 75.00



239 Children and Holiday Post Card Lot

Lot: (12) Postcards. Estimate: 20.00 - 30.00



240 Ephemera Lot

Lot of Bicycle Ephemera including trading cards, road book, address book, cyclist dictionary. Estimate: 40.00 - 60.00



241 Michigan L.A.W. & Indiana LAW Road Books

Lot: Michigan L.A.W. 1896 & Indiana L.A.W. road books. Estimate: 25.00 - 50.00



242 McClures Magazine Lot

1897 McClures magazines, bound. Estimate: 25.00 - 35.00



December 1, 2012 Pedaling History Bicycle Museum Auction 12/1/2012

LOT #

243 Post Card Lot

Lot (29) post cards. Estimate: 75.00 - 125.00



244 Wheelmen Map Collection

Lot: NY Map/York County Wheelmen/Essex County/ NY Road Book L.A.W. Estimate: 25.00 - 45.00



245 Road Book and Map Lot

Lot of driving and cycling road maps 1885 southeast Mass road book, Brockton/Middlesex road books. Estimate: 75.00 - 125.00



246 Western Flyer Bicycle

Western Flyer bicycle, men's tank model. Reproduction. Estimate: 100.00 - 200.00



247 Cyclometer

Cyclometer with box: 28", "Standard Midget", Standard Watch Co., New York. Estimate: 50.00 - 75.00



248 L.A.W. Cast Bell

L.A.W. Cast Bell, CORBIN No. 5A. Estimate: 50.00 - 75.00



249 Cast Small Eagle Bell

Cast small eagle bell, Bristol. Estimate: 50.00 - 75.00



LOT #

250 Wheel Roller Bell Cast

Wheel roller bell cast. Estimate: 25.00 - 50.00



251 Cyclometer

26" Standard Cyclometer with Box. Standard Watch Co., New York. Estimate: 100.00 - 200.00



252 Turtle Cast Bell

Turtle cast bell. Estimate: 50.00 - 75.00



253 Small Cast USA Shield Bell

Small cast USA shield bell. Estimate: 25.00 - 50.00



254 Cast Century Bell

Cast century bell. Estimate: 25.00 - 50.00



255 Cast Dual Tone Egg Bell

Cast dual tone egg bell. Estimate: 25.00 - 50.00



256 Cyclometer

Cyclometer with trip counter: The Veeder Mfg. Co., Hartford Conn. Estimate: 25.00 - 50.00



257 Cyclometer

Cyclometer: 28" "Shepard's Trip", Waterbury Conn. (Waterbury Buckle Co.). Estimate: 25.00 - 50.00



December 1, 2012 Pedaling History Bicycle Museum Auction 12/1/2012

LOT #

258 Cyclometer

Cyclometer: Butcher Cyclometer Co., Boston USA, 54". Estimate: 50.00 - 75.00



259 Cyclometer

Cyclometer: Butcher Cyclometer Co., Boston USA, 30". Estimate: 200.00 - 300.00



260 Cast Wind up Bell

Cast wind up bell. Estimate: 25.00 - 50.00



261 Cyclometer

Cyclometer: 28" Lowe's Cyclometer, Capitol Mfg. Co., Chicago Ill. Estimate: 100.00 - 200.00



262 Cyclometer

Cyclometer: Veeder Mfg. Co., Hartford Conn. Estimate: 25.00 - 50.00



263 Bell Lot

Lot of (2) bells. Estimate: 25.00 - 35.00



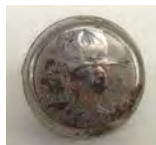
264 Cyclometer

Cyclometer: 28" New Departure, Bristol Conn. Estimate: 25.00 - 50.00



265 Boy Scout Bicycle Bell

Boy Scout bicycle bell, "Be Prepared". Estimate: 20.00 - 40.00



LOT #

266 Bicycle Horn

Bicycle horn. Estimate: 25.00 - 35.00



267 Wheel Roller Bell

Wheel Roller Bell, made in USA. Estimate: 30.00 - 50.00



268 Highwheel or Hard Tire Safety Bell

Highwheel or hard tire safety bell. Estimate: 100.00 - 200.00



269 Cyclometer

Cyclometer with box: 28" New Departure, Bristol Conn. Estimate: 25.00 - 50.00



270 Cyclometer

Cyclometer: Joseph Lucas LTD, "King of the Road" (made in England). Estimate: 25.00 - 50.00



271 Cyclometer

Cyclometer: Seth Thomas, made in USA. Estimate: 50.00 - 75.00



272 Sherrell Classic Bicycle

David Sherrell Classic balloon bicycle. Excellent condition. Estimate: 400.00 - 600.00



273 Head Badge Lot

(10) Head badges Estimate: 40.00 - 60.00



December 1, 2012 Pedaling History Bicycle Museum Auction 12/1/2012

LOT #

274 Lindy Head Badge

Lindy Head Badge, The Shelby Cycle Co. USA.
Estimate: 100.00 - 200.00



275 Head Badge Lot

(10) head badges. Estimate: 50.00 - 100.00



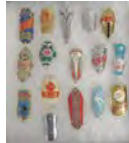
276 Head Badge Lot

(20) head badges Estimate: 50.00 - 75.00



277 Head Badge Lot

(16) head badges. Estimate: 25.00 - 50.00



278 Head Badge Lot

(9) head badges. Estimate: 50.00 - 100.00



279 (9) Printers Blocks

(9) printers blocks including safety, highwheel, lamp & bell designs. Estimate: 25.00 - 35.00



280 Misc. Dealer Advertising Lot

Misc. hang tags & thimble Lot. incl. search light and Boston laminated rims. Estimate: 40.00 - 60.00



281 Whistle & Siren Lot

Advertising whistle, Chicyclo Bicycle Tires and nickel plate siren. Estimate: 25.00 - 45.00



LOT #

282 Lot (2) Whistles

B.G.I. Co. Universal NO.1 2 tone whistle and The Acme Thunderer (made in England)
Estimate: 25.00 - 35.00



283 Lot of Collapsible Cups

Lot of collapsible cups incl: Niagara Falls, Vest Pocket Cup, L.A.W. etc. Estimate: 75.00 - 125.00



284 Pocket Knife Lot

Lot (2) pocket knives. Estimate: 40.00 - 60.00



285 Pierce Pneumatic Racer

c. 1920 Pierce made in Angola, NY. Estimate: 400.00 - 600.00



286 Bicycle Collectable Lot

Collection of approx. (15) bicycle related tins including tube repair etc. Estimate: 100.00 - 200.00



287 Schwinn Panther Bicycle

C. 1960 Schwinn "Panther" bicycle. Original.
Estimate: 100.00 - 200.00



288 Photo Easel

Safety bicycle photo easel. Estimate: 30.00 - 50.00



December 1, 2012 Pedaling History Bicycle Museum Auction 12/1/2012

LOT #

289 Imperial Pneumatic Bicycle

C. 1900 Imperial pneumatic, manufactured by Ames & Frost Co., Chicago, IL. Includes bell. Older restoration. Estimate: 200.00 - 300.00



290 New Departure Letter Opener

New Departure letter opener. Estimate: 25.00 - 45.00



291 L.A.W. Tip Tray

L.A.W. Tip Tray. Darling & Murphy "Around the United States by Bicycle". Estimate: 25.00 - 45.00



292 Whistle Lot

3 tone whistle (made in England) and standard whistle on chain. Estimate: 50.00 - 75.00



293 Stevengraph

Stevengraph, high wheel race. Frame size: 8 1/2 x 11 1/2". Estimate: 75.00 - 125.00



294 54" Wheel for High Wheel Bicycle

54" Wheel Rim for high wheel bicycle, English, circa 1884. Estimate: 200.00 - 300.00



295 A & P Tea Company Die Cut

C. 1883 Framed A & P Tea Co. Die Cut of highwheel. Site: 9 1/2 x 6 3/4" Estimate: 40.00 - 60.00



LOT #

296 Monark Silver King Balloon Bicycle

C. 1948 Silver King Monark balloon bicycle, hex tube aluminum frame, with speedometer. Estimate: 500.00 - 700.00



297 Monark Silver King Balloon Bicycle

C. 1937 Monark aluminum Silver King "Flo Cycle" balloon bicycle, with speedometer and headlight. Estimate: 400.00 - 600.00



298 Fin de Cycle Great Barrington Mass Bike Rack

Fin de Cycle Great Barrington Mass Bike Rack Estimate: 200.00 - 400.00



299 Syracuse Cycling Club 1890 - Framed

Syracuse Cycling Club 1890 - framed. Estimate: 150.00 - 250.00



300 Harley Davidson Bicycle NOS

Harley Davidson commemorative bicycle, 1998, NOS. Estimate: 150.00 - 250.00



301 19th C. Stoneware Beer Bottle

19th C. English stoneware beer bottle. Estimate: 25.00 - 35.00



302 1880 Photo - L.A.W. Rhode Island Meet

1880 Photo - L.A.W. Rhode Island Meet. Site: 7 x 9". Estimate: 75.00 - 125.00



December 1, 2012 Pedaling History Bicycle Museum Auction 12/1/2012

LOT #

303 Schwinn Cycle Truck

C. 1950 Schwinn Cycle Truck. Restored.
Estimate: 300.00 - 500.00



304 Illuminated Columbia Sign

C. 1950's illuminated Columbia dealers sign.
The Ohio Adv. Display Co. Estimate: 75.00 - 150.00



305 Print: Horse vs. Bike Race 1887

Framed Print: Horse vs. Bike Race 1887. Site: 13 x 9 1/2". Estimate: 50.00 - 75.00



306 Lot (11) License Plates / Badges

Lot (11) license plates / badges (Owatonna, Minn, Dickinson, ND, Lewistown Mont., Fairview etc). Estimate: 25.00 - 50.00



307 Original Columbia Poster Water Color

Original water color for Columbia poster - Framed. 13 x 8 1/4". Estimate: 50.00 - 100.00



308 Graphite Sketch

Framed pencil drawing park setting. Site: 11 1/2 x 16 1/2". Estimate: 150.00 - 250.00



309 Columbia Flyer

Large format Columbia advertising / flyer 1888 "Bicycling World and L.A.W. bulletin plate No. 3". Site: 11 x 8". Estimate: 50.00 - 100.00



LOT #

310 License Plates / Badges Lot

Lot (10) license plates / badges, "Wichita, Minneapolis, Hawaii, Long Beach, Akron, Austin, Mishawaka". Estimate: 25.00 - 50.00



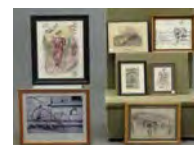
311 Framed Victor - Victoria Advertisement

Framed Victor - Victoria Advertisement, artist Will Bradley. Site: 14 1/2" x 9 1/2". Estimate: 75.00 - 125.00



312 Ephemera Lot

Lot: Framed images incl. Print L.A.W. Meet Ride 1883. Estimate: 25.00 - 50.00



313 Lithograph / Print

Lithograph / print 1819 - Dandy Charger framed "John Hudson, London, Cheapside". Site: 7 1/2 x 10 1/2". Estimate: 100.00 - 200.00



314 Lithograph / Print

Lithograph / print 1819 - "A Pilentum" framed. Site: 8 1/4 x 9 1/2". Estimate: 125.00 - 225.00



315 Lot (2) Photographs

(2) Large format photographs: 1896 youth champ & man safety 1894 Columbia. Site: 10 1/8 x 13 1/2". Estimate: 125.00 - 225.00



316 English Print

English Print "Mr. Pickwick goes to France..." Estimate: 25.00 - 50.00



December 1, 2012 Pedaling History Bicycle Museum Auction 12/1/2012

LOT #

317 Die Cuts

Framed die cuts with bikes. Frame size: 7 1/2 x 21 1/2". Estimate: 25.00 - 50.00



318 Bicycle Collectable Lot

Lot of (7) misc., posters and trays. Estimate: 25.00 - 35.00



319 Pair 24" Wood Rims

Pair 24" Wood Rims. Estimate: 25.00 - 50.00



320 Gillette Ambassador 24" Tires - Pair

Gillette Ambassador 24" Tires - Pair. Estimate: 50.00 - 75.00



321 Bicycle Bell Lot

(3) bicycle bells. Estimate: 25.00 - 45.00



322 Pair 24" US Chain Tread Tires

Pair 24" US Chain Tread Tires. Estimate: 50.00 - 75.00



323 18" Ordinary Rear Rim

18" Ordinary Rear Rim. Estimate: 50.00 - 75.00



324 Columbia Pneumatic Bicycle

C. 1910 Columbia Boys 20" pneumatic bicycle. Includes 20th C. lamp, lacks grips, old tires. Restored. Estimate: 200.00 - 300.00



LOT #

325 Pair 26" Wood Rims

Pair 26" wood rims "Plymouth Ind." 1893. Estimate: 25.00 - 50.00



326 Pair 28" Wood Rims

Pair 28" wood rims "Lobdell". Estimate: 25.00 - 50.00



327 Fairy Tricycle

Fairy Tricycle: C. 1900 Gendron Wheel Co. Toledo, OH, 22" x 14". Original condition with wood fenders. Estimate: 150.00 - 250.00



328 Pair 24" US Chain Tread Tires

Pair 24" US Chain Tread Tires. Estimate: 50.00 - 75.00



329 Bullet Coaster

C. 1920 Bullet Coaster. Wood with tracks, two pieces. Original condition. Estimate: 100.00 - 200.00



330 Reproduction Cast Iron Bicycle Stand

Reproduction cast iron bicycle stand. Estimate: 50.00 - 75.00



331 Reproduction Cast Iron Bicycle Stand

Reproduction cast iron bicycle stand. Estimate: 50.00 - 75.00



December 1, 2012 Pedaling History Bicycle Museum Auction 12/1/2012

LOT #

332 Reproduction Cast Iron Bicycle Stand

Reproduction cast iron bicycle stand. Estimate:
50.00 - 75.00



333 Reproduction Cast Aluminum Bicycle Stand

Reproduction cast iron bicycle stand. Estimate:
25.00 - 50.00



334 Reproduction Cast Aluminum Bicycle Stand

Reproduction cast iron bicycle stand. Estimate:
25.00 - 50.00



335 Reproduction Cast Aluminum Bicycle Stand

Reproduction cast iron bicycle stand. Estimate:
25.00 - 50.00



336 Texas Bicycle License Plate Lot

Lot (17) 1948-1964 Austin, Texas bicycle license plates. Estimate: 25.00 - 50.00



337 Reproduction Cast Aluminum Bicycle Stand

Reproduction cast iron bicycle stand. Estimate:
25.00 - 50.00



338 Wolff Pneumatic Bicycle

C. 1897 Wolff American pneumatic bicycle, made by R.H. Wolff and Co., NY. Christie saddle. As found original condition. Estimate:
300.00 - 500.00



LOT #

339 Reproduction Cast Aluminum Bicycle Stand

Reproduction cast iron bicycle stand. Estimate:
25.00 - 50.00



340 Reproduction Cast Aluminum Bicycle Stand

Reproduction cast iron bicycle stand. Estimate:
25.00 - 50.00



341 Bicycle Stand Lot

Lot of (8) misc. bicycle stands. Estimate: 25.00 - 35.00



342 Shogun - Men's 10 Speed Racer

C. 1985 Shogun men's 10 speed pursuit bike. Estimate: 75.00 - 150.00



343 Bicycle Toy Lot

Lot of (3) bicycle toys. Estimate: 10.00 - 20.00



344 Bicycle Models

Lot of (2) bicycle models. Estimate: 10.00 - 20.00



345 Bicycle Cigar Box & Advertising Ruler

Early "Bike" cigar box and advertising ruler. Estimate: 10.00 - 20.00



346 Penny Farthing Plate Lot

Lot of (2) "1872-1972" penny farthing plates. Estimate: 10.00 - 20.00

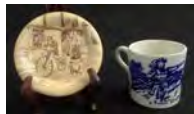


December 1, 2012 Pedaling History Bicycle Museum Auction 12/1/2012

LOT #

347 Bicycle Porcelain Lot

Lot including early flow blue cup along with New Hall Hanley dish. Estimate: 10.00 - 20.00



348 VIM Deluxe Tandem Bicycle

VIM Deluxe tandem bicycle. Vim Cycle Co. Estimate: 200.00 - 300.00



350 Meister Lightweight Bicycle

Meister lady's lightweight bicycle with tennis bracket on front fork. Rod breaks. Original condition. Estimate: 200.00 - 300.00



361 German Wood Shelf

German wood shelf unit with High Wheel ordinary "Deschutzt". Estimate: 75.00 - 125.00



362 Bicycle Chocolate Mold Lot

(5) bicycle chocolate molds. Estimate: 75.00 - 125.00



366 Bicycle Bell Lot

Lot of three bicycle bells. Estimate: 25.00 - 35.00



367 Bicycle License Plates / Tags Lot

Lot: (9) bicycle license plates / tags "Rochester, Holyoke, Winona, Wausau, Chippewa Falls, Fort Dodge, Dallas". Estimate: 25.00 - 50.00



LOT #

370 Bicycle Bell Lot

Lot of three bells (2 high wheels) one as is. Estimate: 150.00 - 200.00



372 J. C. Higgins Balloon Bicycle

C. 1950 J. C. Higgins balloon bicycle. Nice original condition. Estimate: 200.00 - 300.00



379 Emblem Safety Bicycle

C. 1930 Emblem "Capital" safety bicycle. Nice original. Estimate: 100.00 - 200.00



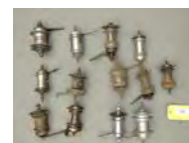
386 Westfield Folding Bicycle

C. 1938 Westfield folding bike. Nice original condition. Estimate: 200.00 - 300.00



387 Rear Hub Collection

Lot: (13) rear hubs, various makes "Bendix, Durex, Morrow". Estimate: 150.00 - 250.00



388 Bicycle Collectable Lot

Large lot including advertising tins, cast ink wells (reproduction), glasses, plates, mugs etc. Estimate: 25.00 - 50.00



389 Chain Ring Lot

(4) Chain rings - 1 huge maybe a Racycle? Estimate: 50.00 - 75.00



390 Heil Brothers - Track Racer

C. 1930 Heil Brothers-Track Racer, missing 1 pedal. Estimate: 150.00 - 250.00



December 1, 2012 Pedaling History Bicycle Museum Auction 12/1/2012

LOT #

391 Railroad Hi-Ball Hand Car

Railroad Hi-Ball Hand Car, child's cart, AMF USA. Estimate: 50.00 - 75.00



392 Scooter Lot

C. 1920's Roller-Ski Scooter, and c. 1946 Scooter Skate. Estimate: 50.00 - 75.00



393 Childrens Toys

Lil Red Tricycle - art deco, 5" wheels, 1935 and GB Kid's Bike - Dino, made in Italy, very small, 1 missing pedal. Estimate: 25.00 - 45.00



394 Scooter

C. 1940 balloon tire scooter. Estimate: 25.00 - 50.00



395 Tricycle

C. 1900 strap steel tricycle. Repainted. Estimate: 75.00 - 100.00



396 Tricycle

C. 1900's tricycle. Estimate: 30.00 - 60.00



397 Ratchet Scooter

C. 1920's ratchet scooter - 3 wheel. Unique drive mechanism. Estimate: 50.00 - 100.00



398 Iver Johnson Tricycle

Iver Johnson tricycle with bell. Estimate: 75.00 - 125.00



LOT #

399 Tricycle

C. 1930 ratchet drive tricycle. Estimate: 50.00 - 75.00



400 Auto Wheel Tricycle - N. Tonawanda

C. 1930's auto wheel tricycle, N. Tonawanda. Nice original with bell. Estimate: 25.00 - 45.00



401 Cleveland Child's Pneumatic Bicycle

C. 1930 Cleveland child's 20" diameter wheel pneumatic. Original. Estimate: 200.00 - 300.00



402 Bicycle Pocket Watch Lot

Lot including a pocket watch with cyclists along with case with cyclists motif. Estimate: 50.00 - 75.00



403 Bicycle Siren and Bell Lot

(3) bicycle sirens and a Starr bell. Estimate: 25.00 - 50.00



404 New Departure Advertising Medal

New Departure five part advertising medal. Estimate: 40.00 - 60.00



405 Columbia Mountain Bicycle

C. 1990's Columbia dual suspension mountain bicycle. As new. Estimate: 100.00 - 150.00



406 Paper Clip Lot

Two paper clips. Estimate: 50.00 - 100.00



December 1, 2012 Pedaling History Bicycle Museum Auction 12/1/2012

LOT #

407 Meerscham Pipe

Meerscham pipe 4" in length. Estimate: 50.00 - 100.00



408 Bugle

Bugle marked "The buglet...London". Estimate: 100.00 - 150.00



409 Meerscham Cigarette Holder

Meerscham Cigarette Holder 3 3/4". Estimate: 25.00 - 35.00



410 Schwinn Stingray Lemon Peeler Bicycle

Schwinn Stingray Lemon Peeler, 5-speed, full suspension. Nice original. Estimate: 300.00 - 500.00



411 Bicycle Desk Set

Desk pen holder with handlebar design and ink cups. Estimate: 40.00 - 60.00



412 Bicycle License Plate Lot

(11) bicycle license plates. Estimate: 25.00 - 50.00



413 Pair of Grips

Pair of unique wood grips. Estimate: 25.00 - 45.00



414 Bicycle Skirt Lifter

Victorian ladies bicycle skirt lifter. Estimate: 50.00 - 75.00



LOT #

415 Wood Tricycle

C. 1875 22" x 20" wheel diameter, 1 replaced frame member and pedal. Estimate: 200.00 - 300.00



416 Bicycle Skirt Lifter

Victorian ladies bicycle skirt lifter. Estimate: 50.00 - 100.00



417 Bicycle Skirt Lifter

Victorian ladies bicycle skirt lifter. Pat'd 1876. Estimate: 75.00 - 125.00



418 Westfield Folding Bicycle

C. 1940's Westfield Corp., folding bicycle. Estimate: 200.00 - 300.00



419 Bicycle Flask

Early flask in alligator and silver plate. Estimate: 75.00 - 125.00



420 Racing Bicycle

C. 1920 Heil Brothers champion men's racer. Estimate: 150.00 - 250.00



421 Cycling Lot

Bicycle clips, arm band reflectors, advertising puzzle links etc. Estimate: 25.00 - 45.00



422 AMF Roadmaster, Jet Pilot

C. 1980 Roadmaster, Jet Pilot. Original condition. Estimate: 25.00 - 50.00



December 1, 2012 Pedaling History Bicycle Museum Auction 12/1/2012

LOT #

423 Reproduction Cast Iron Bank Professor Pug Frog

Reproduction cast iron bank professor Pug Frog.
Estimate: 20.00 - 30.00



424 BMX Magnum 37 Stunt Bike

BMX Magnum 37 Stunt Bike, extra sprockets,
MCS components. Estimate: 50.00 - 100.00



425 Iver Johnson Tool Lot

Lot: Iver Johnson screw driver and wrench.
Estimate: 30.00 - 50.00



426 Lotus 10 Speed

C. 1970 Lotus men's 10-speed racer, with shoes.
Estimate: 50.00 - 75.00



427 Wrench Lot

Lot: Wrenches incl. Sterns, Fauber MFG.
Estimate: 20.00 - 30.00



428 Wrench

Barnes wrench. Estimate: 25.00 - 50.00



429 Wrench Lot

Lot: Two wrenches, one Overman Wheel and
one Victor Nipple. Estimate: 50.00 - 75.00



430 Bicycle Bell Lot

Lot of (4) bicycle bells. Estimate: 25.00 - 35.00



LOT #

431 Irish Mail Quadracycle

C. 1920 Irish Mail - wood/metal quadracycle.
Nice original. Estimate: 50.00 - 75.00



432 Shelby Flying Cloud Pneumatic Bicycle

C. 1920 Shelby Flying Cloud, women's
pneumatic safety bicycle. Estimate: 25.00 -
45.00



433 Monark Firestone Balloon Bicycle

C. 1957 Monark Firestone super-deluxe balloon
bicycle, lady's tank model. Original w/battery
damage on tank. Estimate: 100.00 - 200.00



434 Bicycle Bell Lot

Lot of (2) bicycle bells. Estimate: 50.00 -
100.00



435 Acme Pennant Pneumatic Bicycle

C. 1898 Acme Pennant, Acme Cycle Co., Elk
Hart, IN. Ridable, older restoration. Estimate:
200.00 - 300.00



436 Moulton Folding Bicycle

C. 1970 Moulton folding bicycle designed by
Alex Moulton with saddlebags. 4-speed Sturmy
Archer, excellent original condition. Estimate:
150.00 - 350.00



437 Bicycle Accessory Lot

Lot of four oilers and two air pressure gauges.
Estimate: 35.00 - 45.00



December 1, 2012 Pedaling History Bicycle Museum Auction 12/1/2012

LOT #

438 Raleigh Fireball DTR Bicycle

C. 1970 Raleigh Fireball DTR, child's bicycle.
Estimate: 25.00 - 50.00



439 Bicycle Tool Lot

Lot: wrenches incl. Dudley nipple, nipple,
spoke gauge. Estimate: 40.00 - 60.00



440 Motobecane Men's 10-speed

Motobecane Men's 10-speed bicycle, French,
Grand record, excellent condition, Campagnolo
Nuovo record. Estimate: 150.00 - 250.00



441 Firestone Silver Cruiser Balloon Bicycle

Firestone Silver Cruiser middle weight.
Excellent original condition. Estimate: 100.00 -
150.00



442 Wrench Lot

Lot: (4) wrenches one "Eureka". Estimate:
25.00 - 45.00



443 Bicycle Tire Tool Lot

Lot of (8) bicycle tire tools. Estimate: 20.00 -
30.00



444 Silver King Tricycle

C. 1935 Monark Silver King aluminum tricycle.
Estimate: 250.00 - 350.00



LOT #

445 Fowler Pneumatic Safety Bicycle

C. 1897 Fowler men's pneumatic safety,
manufactured by Hill Cycle Mfg. Co., Chicago,
IL. As found original. Estimate: 100.00 - 200.00



446 Bicycle Tool Lot

Lot of two chain tools. Estimate: 10.00 - 20.00



447 Bicycle Tool Lot

Lot of (16) misc. bicycle tools. Estimate: 25.00 -
50.00



448 Moulton Folding Bicycle

C. 1960 Moulton folding bicycle, front
suspension, original condition. Estimate: 250.00
- 350.00



449 Bicycle Hub Lot

Lot of (4) bicycle hubs. Estimate: 25.00 - 50.00



450 Schwinn Stingray Bicycle

C. 1960 Schwinn Stingray. Good original
condition. Estimate: 50.00 - 100.00



451 Misc. Lot

Tire pump and dual toot horn. Estimate: 25.00 -
50.00



452 Sterling Silver Highwheel Ornament

Sterling silver highwheel ornament. 43 grams.
Estimate: 30.00 - 50.00



December 1, 2012 Pedaling History Bicycle Museum Auction 12/1/2012

LOT #

453 Lot of Cards and Chips

Lot: Bicycle playing cards and chips. Estimate: 20.00 - 40.00



454 12 Bicycle License Plates

Lot: (12) Bicycle License Plates / Tags "Austin, Hartley, Minneapolis, Edina, Owatonna, Montana". Estimate: 25.00 - 50.00



455 Bicycle Bell Lot

Lot of (3) bicycle bells. Estimate: 40.00 - 60.00



456 Murray Child's Bicycle

C. 1950 Murray child's bicycle, with fancy decorations. Estimate: 25.00 - 50.00



457 Sidewalk Bicycle

C. 1940 Werlich sidewalk bicycle, hard tires 16". Estimate: 25.00 - 50.00



458 Huffy Centennial Bicycle

C. 1976 Huffy Centennial bicycle, with red white and blue banana seat. Estimate: 75.00 - 100.00



459 Harley Davidson Bicycle

Harley Davidson Sportster, 20". Estimate: 100.00 - 150.00



460 Heidmann Balloon Bicycle

C. 1950 Heidmann-works balloon bicycle, Hanover, Germany. Estimate: 150.00 - 250.00



LOT #

461 Balloon Bicycle

C. 1930 balloon bicycle, double cross bar with child's seat. Estimate: 100.00 - 200.00



462 Roadmaster Balloon Bicycle

C. 1950 Cleveland Welding Roadmaster balloon bicycle, with bell, mirror, light. Estimate: 100.00 - 200.00



463 Hiawatha Middle Weight

C. 1960's Hiawatha middle weight bicycle, nice original. Estimate: 100.00 - 150.00



464 Irish Mail

C. 1920 Irish Mail. Estimate: 25.00 - 50.00



465 Union Folding Bike

C. 1950 Dedemstaart Union Netherland folding bicycle. Good original condition. Estimate: 150.00 - 350.00



466 Schwinn Bicycle

Schwinn light weight bicycle Estimate: 25.00 - 50.00



467 Red Racer Wagon

C. 1950 Red Racer wagon, wood. Good original condition. Estimate: 50.00 - 75.00



468 Two "Hy-Speed" Red Wagons

Two "Hy-Speed" Red Wagons. Estimate: 25.00 - 35.00



December 1, 2012 Pedaling History Bicycle Museum Auction 12/1/2012

LOT #

469 Loblaw Wood Wagon

C. 1950's Loblaw Express wood wagon, with railings. Estimate: 50.00 - 75.00



470 Sherwood Spring Coaster wagon

C. 1920's Sherwood Spring coaster, wood wagon. Nice original. Estimate: 75.00 - 125.00



471 Red Racer Wagon

C. 1920 Red Racer Wagon, wood with break (broken). Estimate: 75.00 - 125.00



472 1950's Boy's Bicycle

C. 1950's unknown boys unique double tube frame-Chrome. Estimate: 50.00 - 75.00



473 Queens City Pneumatic Bicycle

C. 1920's - Queen City pneumatic bicycle, truss frame, manufactured in Elmira, NY. Cracked rear rim. Estimate: 50.00 - 100.00



474 Sears Tourist Lightweight 3-Speed Bicycle

C. 1960's Sears Tourist lightweight 3-speed bicycle. As found. Estimate: 25.00 - 35.00



475 Western Flyer Balloon Bicycle

C. 1960's Western Flyer 24" balloon bicycle, as found original. With warranty paperwork. Estimate: 50.00 - 75.00



LOT #

476 Shelby Flying Cloud Balloon Bicycle

Shelby Flying Cloud balloon bicycle. Original. Estimate: 150.00 - 250.00



477 Walnut Pneumatic Bicycle

C. 1900 G. E. Nash "Walnut" Lockport, NY pneumatic bicycle. With basket. Estimate: 100.00 - 150.00



478 Cleveland Roadmaster Balloon Bicycle

C. 1940 Cleveland Roadmaster balloon bicycle. Estimate: 100.00 - 200.00



479 Convertible Tricycle / Bicycle

28" x 20" or 28" x 22", Kid's convertible Bike / trike, wire wheels, very rare. Estimate: 500.00 - 700.00



480 Roadmaster Balloon Bicycle

C. 1940 Roadmaster balloon bicycle, very nice original. Estimate: 250.00 - 350.00



481 Alenex Lightweight Bicycle

C. 1987 Alenex lightweight bicycle, Ratchet drive. As new. Estimate: 100.00 - 200.00



482 Pope Balloon Bicycle

Pope Westfield balloon bicycle with JC Higgins Speedometer. Estimate: 100.00 - 200.00



December 1, 2012 Pedaling History Bicycle Museum Auction 12/1/2012

LOT #

483 Coker Monster Cruiser Bicycle

Coker Mfr, Monster Cruiser. Excellent condition. Estimate: 200.00 - 300.00



484 Columbia Lightweight Bicycle

C. 1950 Sports lightweight roadster. Good original condition. Estimate: 50.00 - 75.00



485 Schwinn "Ace" Balloon Bicycle

C. 1936-37 Schwinn "Ace" balloon bicycle. Nice original. Estimate: 100.00 - 150.00



486 Bamboo Men's Bicycle

C.1999 bamboo men's bicycle. Estimate: 25.00 - 50.00



487 Scooter Lot

C. 1930's Coaster Craft Scooter, Ratchet, and c. 1920 No. 1 Skudder, Jansey Products, Janesville, WI. Estimate: 75.00 - 100.00



488 World War II Schwinn Lightweight

C. 1944 Schwinn "Victory" lightweight bicycle. Original black no nickel. Estimate: 100.00 - 150.00



489 Horse Riding Toy

C. 1930's horse spring jumper. Estimate: 125.00 - 150.00



LOT #

490 Huffy Tourister Lightweight Bicycle

C. 1985 Huffy Tourister lightweight bicycle - 10 speed cruiser. Excellent condition. Estimate: 25.00 - 35.00



491 MTD Cleveland Chopper

Chopper as found. Estimate: 25.00 - 35.00



492 Folding Bicycle

Folding Bicycle. Sturmy Archer 3-speed. Estimate: 25.00 - 50.00



493 Strida Bicycle

C. 1985 Strida bicycle, British made, belt drive. Estimate: 25.00 - 50.00



494 Schwinn World Lightweight

C. 1950s Schwinn "World" lightweight. Estimate: 25.00 - 35.00



495 Schwinn Lightweight

Schwinn lightweight. Estimate: 25.00 - 35.00



496 Columbia Superb Reproduction Bicycle

Reproduction of a 1941 Columbia Superb bicycle. Estimate: 200.00 - 300.00



497 Irish Mail

C. 1940 Irish Mail, "Torpedo". Metal, repainted. Estimate: 50.00 - 75.00



December 1, 2012 Pedaling History Bicycle Museum Auction 12/1/2012

LOT #

498 Lot Hockey Sticker Coaster & Child Scooter

C. 1939 hockey sticker coaster, original condition, and C. 1920 child scooter with brake.
Estimate: 50.00 - 100.00



499 Scooter

C. 1960 Super Sonda scooter. Chain drive.
Estimate: 35.00 - 50.00



500 Iron Tricycle Velocipede

24" x 18" Child's iron tricycle, nice original condition, lacks saddle cover. Estimate: 100.00 - 200.00



Terms:

Cash - Traveler's Checks - Visa - Mastercard - Discover
15% Buyers Premium

First time buyers must establish credit prior to auction to pay by check.

Local sales tax: NYS Sales Tax 8%

Conditions of Sale

1. Some of the lots in this sale are offered subject to a reserve. This reserve is a confidential minimum price agreed upon by the consignor & COPAKE AUCTION below which the lot will not be sold. In any event when a lot is subject to a reserve, the auctioneer may reject any bid not adequate to the value of the lot.

2. All items are sold "as is" and neither the auctioneer nor the consignor makes any warranties or representations of any kind with respect to the items, and in no event shall they be responsible for the correctness of the catalogue or other description of the physical condition, size, quality, rarity, importance, medium, provenance, period, source, origin or historical relevance of the items and no statement anywhere, whether oral or written, shall be deemed such a warranty or representation. Prospective bidders should inspect the merchandise thoroughly before bidding to determine its condition, size and whether or not it has been repaired or restored. All sales are final & refunds will not be given.

3. The auctioneer reserves the right to withdraw any merchandise before the sale and shall have no liability whatsoever for such withdrawal.

4. The auctioneer will be the final judge as to who is the successful bidder. In the event of any dispute the auctioneer shall at his discretion decide to reopen the bidding or not.

5. As a service to our customers the COPAKE AUCTION will execute absentee bids if so authorized in writing. Absentee bids should be made on the Bidder Form available in the office. This form should be clearly and completely filled out. All absentee bids will be executed competitively during the sale. Items will be purchased for the lowest price possible regardless of the amount of the order bid. Where two absentee bidders bid the same amount the first received will be honored. This service is offered as a convenience and COPAKE AUCTION will not be responsible for any errors or failures to properly execute the bids.

6. On the fall of the auctioneer's hammer, ownership to the offered lot will pass to the highest bidder acknowledged by the auctioneer, and as such the bidder assumes full risk and responsibility and will pay the full purchase price of the item(s).

7. All items are subject to a 15% buyers premium which will be added to the successful bid price and is payable by the purchaser as part of the total purchase price.

8. All items are subject to an 8% sales tax unless the purchaser possesses a sales tax exemption number.

9. All accounts are to be settled by the end of the sale. We do not accept checks from first time buyers unless accompanied with a bank letter of credit or previous approval from the auctioneer. Payment may also be made by cash, Travelers Checks, MasterCard or Visa.

10. All property must be removed from the premises by 10:00 am on the following day after the sale unless other arrangements have been made with the auctioneer. If items are not removed 14 days after the date of sale a storage fee of one dollar per day will be charged to the purchaser of said item(s). In addition items not removed from the premises eight weeks after date of sale will be resold at auction. The COPAKE AUCTION shall have no liability for any damage to property left on its premises.

11. The COPAKE AUCTION may at its discretion and at purchaser's request package and ship items as directed by the purchaser. In such event, purchaser agrees that all such packaging, handling and shipping is at the sole risk of the purchaser and that COPAKE AUCTION shall have no liability for any loss or damage to items. Purchaser shall pay in advance all packaging expenses including labor, materials, postage and carrier fees and all insurance charges.

December 1, 2012 Pedaling History Bicycle Museum Auction 12/1/2012

12. Bidding on any item indicates your acceptance of these terms and all other terms announced at the Auction Gallery.

Copake Auction Inc.
PO BOX H - 266 Route 7A
Copake, NY 12516

Phone: 518-329-1142

December 1, 2012 Pedaling History Bicycle Museum Auction 12/1/2012

LOT #

1 19th c. Pierce Poster Framed

19th c. Pierce Poster Framed. Site, 81" x 41". "Niagara Lith. Co. Buffalo, NY 1898". Superb condition, probably the best known example. Estimate: 3,000.00 - 5,000.00

Hammer Price: 8,000.00



2 46" Springfield Roadster High Wheel Safety Bicycle

C. 1889 46" Springfield Roadster high wheel safety. Rare, serial #2054, restored, rideable. Estimate: 4,500.00 - 5,000.00

Hammer Price: 6,900.00



3 50" Victor High Wheel Ordinary Bicycle

C. 1888 50" Victor "Junior" high wheel, serial #119, restored, rideable. Estimate: 1,600.00 - 1,800.00

Hammer Price: 2,300.00



4 46" Gormully & Jeffrey High Wheel Ordinary Bicycle

C. 1886 46" Gormully & Jeffrey High Wheel "Challenge", older restoration, incorrect step. Estimate: 1,700.00 - 1,900.00

Hammer Price: 3,400.00



4a Gormully & Jeffery High Wheel Safety Bicycle

C. 1887 G & J "American Safety". Extremely rare, about 10 known. Restored. Estimate: 12,000.00 - 14,000.00

Hammer Price: 21,000.00



LOT #

5 19th c. Columbia Military Bicycle

C. 1892, Columbia #1, Spring Fork, hard tire safety, twin tube frame. Includes: Springfield rifle, ammo box with ammo, Salisbury headlight, bedroll, saddlebags, bugle. One of three unique military bikes to be offered in upcoming sales. Estimate: 4,000.00 - 7,000.00

Hammer Price: 8,500.00



6 Royal Doulton Pitcher and Tumbler

English Doulton Lambeth Pitcher 161, and Royal-Doulton tumbler 1957. Estimate: 75.00 - 125.00

Hammer Price: 300.00



7 League Shaft Drive Chainless Bicycle

C. 1895 League, first commercial chainless, rideable, very rare, replaced headbadge, grips and spokes. Estimate: 3,200.00 - 3,700.00

Hammer Price: 7,900.00



8 Wood Brothers Boneshaker Bicycle

C. 1869 Wood Brothers boneshaker, 596 Broadway, NYC, acorn pedals, good rideable, 37" x 31" diameter wheels. Estimate: 3,000.00 - 4,000.00

Hammer Price: 3,500.00



December 1, 2012 Pedaling History Bicycle Museum Auction 12/1/2012

LOT #

9 Elliott Hickory Hard Tire Safety Bicycle

C. 1891 Elliott Hickory model B. Restored and rideable, 32" x 26" diameter wheels.

Estimate: 2,800.00 - 3,300.00

Hammer Price: 6,500.00



10 Columbia High Wheel Ordinary Bicycle

C. 1890 Columbia 54" "Expert", serial #12598. Restored, rideable with incorrect step. Estimate: 1,800.00 - 2,200.00

Hammer Price: 3,400.00



11 Columbia High Wheel Ordinary Bicycle

C. 1884 Columbia 54" "Standard", Serial #8372. Restored and rideable. Estimate: 1,800.00 - 2,200.00

Hammer Price: 2,300.00



12 St. Nicholas High Wheel Ordinary Bicycle

C. 1879 St. Nicholas 36" wooden ordinary.

Replaced pedals and saddle. Estimate: 1,200.00 - 1,500.00

Hammer Price: 2,200.00



13 Telegram High Wheel Safety Bicycle

C. 1892 Telegram, patented by Frank H. Bolte, made by Sercombe-Bolte, Mfg Co. Milwaukee, WI. Front wheel driven, 30" x 24" diameter wheels. Only known example, restored and rideable. Illustrated in Collecting and Restoring Antique

Bicycles by G. Donald Adams (fig. 7-34,

page 218). Estimate: 5,500.00 - 6,500.00

Hammer Price: 23,000.00



LOT #

14 Mary Gregory Style Syrup

19th c. German Mary Gregory style blown glass syrup. Estimate: 25.00 - 50.00

Hammer Price: 175.00



15 19th c. German Lithopane Stein

19th c. German "Musterschultz" with comical Lithopane. Estimate: 200.00 - 300.00

Hammer Price: 200.00



16 High Wheel Ordinary Bicycle

42" wooden wheel, reproduction?.

Rideable. Estimate: 400.00 - 600.00

Hammer Price: 1,500.00



17 Bicycle with Sidecar

C. 1915 pneumatic bicycle with sidecar.

Partial restoration. Estimate: 1,200.00 - 1,500.00

Hammer Price: 2,100.00



18 C. 1820 Horn Snuff Box

C. 1820 horn snuff box with hobby horse motif. 3" diameter Estimate: 200.00 - 300.00

Hammer Price: 100.00



19 Bicycle Themed Sterling and Enamel Spoons

Cased set of English sterling and enamel spoons "Bath Road Club". 156 grams

Estimate: 100.00 - 150.00

Hammer Price: 175.00



December 1, 2012 Pedaling History Bicycle Museum Auction 12/1/2012

LOT #

20 Tintype with Cyclists

Tintype with cyclists 3" x 2 3/4". Estimate:
50.00 - 75.00
Hammer Price: 150.00



21 Bicycle Lock Lot

Lot of four locks. Estimate: 25.00 - 45.00
Hammer Price: 60.00



22 Papier Mache Snuff Box

19th c. papier mache snuff box 2 3/4" x 1 1/2". Estimate: 100.00 - 200.00
Hammer Price: 350.00



23 Bicycle Lock Lot

Lot of two rare bicycle locks. Estimate:
50.00 - 100.00
Hammer Price: 70.00



24 Iver Johnson Men's Hard Tire Safety Bicycle

C. 1890 Iver Johnson Men's hard tire safety, 30" wheels, nice restoration, rideable. Estimate: 2,800.00 - 3,100.00
Hammer Price: 9,500.00



25 Child's Hard Tire Safety Bicycle

C. 1891 EC Meacham Arms Co., St. Louis, MO. Child's hard tire safety. 22" wheels. Bob Jameson restoration. Estimate: 1,200.00 - 1,600.00
Hammer Price: 5,400.00



LOT #

26 French Transferware Plate Lot

Set of 9 French transferware plates 7 3/4" "HBCM". Estimate: 100.00 - 200.00
Hammer Price: 375.00



27 National Hard Tire Safety Bicycle

C. 1890 National Women's hard tire safety. Needs saddle leather, good condition, serial #395. Estimate: 2,600.00 - 2,800.00
Hammer Price: 4,100.00



28 Majolica Plate

19th c. Majolica plate 7 3/4" diameter. Estimate: 40.00 - 60.00
Hammer Price: 50.00



29 Porcelain Lot

Lot of porcelain including scarce Japanese decorated tea cup. Estimate: 50.00 - 75.00
Hammer Price: 40.00



30 Porcelain Lot

Lot of three pieces of bicycle decorated porcelain. Estimate: 50.00 - 75.00
Hammer Price: 80.00



31 50" Columbia High Wheel Ordinary Bicycle

C. 1888 Columbia 50" "Volunteer", serial #445. Restored and rideable. Estimate: 1,700.00 - 2,000.00
Hammer Price: 3,000.00



December 1, 2012 Pedaling History Bicycle Museum Auction 12/1/2012

LOT #

32 Porcelain Lot

Lot: three pieces of bicycle decorated porcelain. Estimate: 50.00 - 75.00
Hammer Price: 175.00



33 Leather Tool Pouch Lot

Collection of nine leather tool pouches (one signed Columbia). Estimate: 50.00 - 100.00
Hammer Price: 475.00



34 Bicycle Advertising Print

Columbia bicycle Advertising disbound print. Site 11 1/2" x 9". Estimate: 40.00 - 60.00
Hammer Price: 175.00



35 Bicycle Game

19th c. "Bicycle The Race" game. Estimate: 50.00 - 100.00
Hammer Price: 250.00



36 Sheet Music Lot

Lot of two pieces of sheet music. 13 1/4" x 10". Estimate: 25.00 - 50.00
Hammer Price: 150.00



37 Sheet Music

19th c. sheet music 13" x 10". Estimate: 25.00 - 50.00
Hammer Price: 50.00



LOT #

38 Chilion Pneumatic Bicycle

C. 1900 Chilion wooden frame men's pneumatic. Original condition, w/ lamp. Estimate: 1,800.00 - 2,100.00
Hammer Price: 8,000.00



39 Vintage Sheet Music Lot

Lot of two pieces of vintage sheet music. Estimate: 20.00 - 30.00
Hammer Price: 20.00



40 Bicycle Store Display

Vintage bicycle store display. Cardboard 10" x 12". Estimate: 25.00 - 35.00
Hammer Price: 150.00



41 Sheet Music

Lot of two pieces of 19th c. sheet music. Estimate: 20.00 - 30.00
Hammer Price: 70.00



42 NOS Bicycle Locks

Lot of two NOS boxed bicycle locks. Estimate: 25.00 - 50.00
Hammer Price: 70.00



43 Sheet Music Lot

Lot of three pieces of early sheet music 14" x 10". Estimate: 25.00 - 35.00
Hammer Price: 40.00



44 Columbia Men's Chainless Bicycle

C. 1917 Columbia Men's Chainless. Model 704 w/ suspension. Restored. Estimate: 1,100.00 - 1,200.00
Hammer Price: 1,800.00



December 1, 2012 Pedaling History Bicycle Museum Auction 12/1/2012

LOT #

45 Parts Cards Lot

Lot of two NOS parts cards. Estimate:
25.00 - 50.00
Hammer Price: 80.00



46 Sheet Music Lot

Lot of two pieces of early sheet music 14" x 11". Estimate: 25.00 - 50.00
Hammer Price: 35.00



47 Sheet Music Lot

Lot of three pieces of early sheet music 14" x 10" - 10" x 8 1/2". Estimate: 25.00 - 35.00
Hammer Price: 35.00



48 Bicycle Toy Lot

Lot including early puzzle, model kit, "Raleigh Cruising Game" and six day bike race game. Estimate: 30.00 - 50.00
Hammer Price: 225.00



49 Porcelain Cup

Porcelain Cup Tiger on Safety Bike "BT CO, GERMANY". Estimate: 25.00 - 35.00
Hammer Price: 50.00



50 Bicycle Toy

String balance toy "Fewo Co.". Estimate: 25.00 - 35.00
Hammer Price: 60.00



LOT #

51 Children's Book Lot

Lot of three 19th c. children's books. Estimate: 25.00 - 35.00
Hammer Price: 80.00



52 Staffordshire Lot

Lot of two Staffordshire fairings (whistles) along with a vase 3 3/4" Ht. Estimate: 50.00 - 100.00
Hammer Price: 60.00



53 Bicycle Parts Lot

NOS lot including "MeFra" pedal reflector, "Grip-o-lite" grips and "handgards". Estimate: 40.00 - 60.00
Hammer Price: 60.00



54 Quadrant Tricycle

C. 1886 Quadrant Tricycle, serial # 2343, 36" x 24". Incorrect saddle, over painted, rideable. Estimate: 6,500.00 - 7,500.00
Hammer Price: 8,500.00



55 Bicycle Parts Lot

NOS lot including "Red Fox" tube, "the Wald BB" repair tool, "Diamond" chain etc. Estimate: 25.00 - 45.00
Hammer Price: 90.00



56 NOS Delta Part

NOS Delta rocket and horn (model A2170). Estimate: 30.00 - 50.00
Hammer Price: 80.00



December 1, 2012 Pedaling History Bicycle Museum Auction 12/1/2012

LOT #

57 French Plate Lot

Set of four French plates 7 3/4" diameter.
Estimate: 50.00 - 75.00
Hammer Price: 150.00



58 19th c. Transferware Plate

Early 19th c. English transferware plate
7 1/2". Estimate: 75.00 - 125.00
Hammer Price: 100.00



59 Bicycle Speedometer

NOS "Stewart-Warner Cadet" bicycle
speedometer. Estimate: 25.00 - 50.00
Hammer Price: 90.00



60 Postcard Lot

Lot of assorted post cards. Estimate: 50.00
- 100.00
Hammer Price: 150.00



61 (2) Bicycle Head Lamps

Oil head lamp lot: "Morning Star" and
"The Everlit". Estimate: 50.00 - 75.00
Hammer Price: 100.00



62 Gormully & Jeffery Hard Tire Safety Bicycle

C. 1891 Gormully & Jeffery American
Lady's Rambler. Restored, rideable.
Estimate: 1,800.00 - 2,100.00
Hammer Price: 6,200.00



63 (2) Bicycle Head Lamps

Oil head lamps: "The Front Light", M.B.
Co. NY and "B & R Sparkler". Estimate:
50.00 - 100.00
Hammer Price: 325.00



LOT #

64 (2) Bicycle Head Lamps

"KATY" Cycle Lane and unmarked lamp
with bracket. Estimate: 50.00 - 100.00
Hammer Price: 150.00



65 American Rambler Hard Tire Safety Bicycle

C. 1890 American Rambler men's HTS,
26" x 30" diameter wheels, sprung frame.
As found, rear wheel needs spokes.
Estimate: 2,800.00 - 3,200.00
Hammer Price: 4,200.00



66 (2) Bicycle Head Lamps

"DIETZ" and "Light Weight" Seiss Mfg,
Toledo head lamps. Estimate: 50.00 -
75.00
Hammer Price: 150.00



67 (2) Bicycle Head Lamps

Head Lamps: "Miller" and "Lightweight"
by Seiss Mfg. Estimate: 50.00 - 75.00
Hammer Price: 125.00



68 (2) Bicycle Head Lamps

Head Lamps: "Powell and Hanmer"
"HOROSCOPE" and "Miller Cyclight".
Estimate: 50.00 - 100.00
Hammer Price: 350.00



69 Gormully & Jeffery Rambler Bicycle

C. 1893 Gormully & Jeffery pneumatic
Rambler model 11, tall frame. Estimate:
900.00 - 1,100.00
Hammer Price: 2,600.00



December 1, 2012 Pedaling History Bicycle Museum Auction 12/1/2012

LOT #

70 (2) Bicycle Head Lamps

Head Lamps: "The Everlit" by Edw. Miller and unknown. Estimate: 50.00 - 75.00
Hammer Price: 125.00



71 Stearns Tandem Bicycle

C. 1898 Stearns "Yellow Fellow". Tandem convertible, dual steer, plunger brake. Restored, missing 1 grip. Estimate: 800.00 - 1,200.00
Hammer Price: 2,500.00



72 Columbia Chainless Bicycle

C. 1989 Columbia Chainless-Model #50 men's, original nickel, Christie saddle. Estimate: 500.00 - 700.00
Hammer Price: 2,300.00



73 New Mail Cushion Tire Bicycle

C. 1891 New Mail Lady's cushion tire, made by William Read & Sons. Restored lacks grips and pedal rubber. Estimate: 2,500.00 - 3,200.00
Hammer Price: 4,400.00



74 Wheelman's Pin on Compass

Wheelman's Pin on Compass. Estimate: 40.00 - 60.00
Hammer Price: 100.00



75 Lot (2) Medals

Commonwealth Century Medal with 20 bars 1895-97 (Boston). Estimate: 150.00 - 250.00
Hammer Price: 850.00



LOT #

76 Gold Bicycle Medal

Bicycle medal approx. 14k, 13 grams total weight. Estimate: 200.00 - 300.00
Hammer Price: 600.00



77 Pacific Pneumatic Bicycle

C. 1896 Pacific pneumatic, made by Pacific Bicycle Company, Los Angeles, CA (1895 - 1898). Bell and cyclometer. Bob Jameson restoration. Estimate: 700.00 - 900.00
Hammer Price: 2,400.00



78 Gold Bicycle Medal

Bicycle medal possibly 14k, 19 grams total weight. Estimate: 250.00 - 350.00
Hammer Price: 850.00



79 Gold Filled Medal

Gold filled medal with ribbon. Estimate: 25.00 - 50.00
Hammer Price: 50.00



80 Orient Tandem Bicycle

C. 1897 Orient Tandem, Waltham mfg co., double-men's. Links missing for double steering, good original as described. Estimate: 400.00 - 600.00
Hammer Price: 2,100.00



81 Lot (4) Medals

Medals: (1) Cycle Trades of America Award in case, (1) The White King of Wheels, (1) pendant with plane, auto and bicycle, (1) medal with safety rider. Estimate: 50.00 - 75.00
Hammer Price: 275.00



December 1, 2012 Pedaling History Bicycle Museum Auction 12/1/2012

LOT #

82 Lot (4) Medals

Medals and pins: New York Journal, (2)
L.A.W. New York State Division, NYS
Division L.A.W. Brooklyn/Coney Island
1895. Estimate: 25.00 - 45.00
Hammer Price: 100.00



83 Misc. Lot

1970 \$10 Olympic Canada coin, 19th c.
bronze safety racing medallion, second
prize relay Illinois 1900. Estimate: 50.00 -
100.00
Hammer Price: 40.00



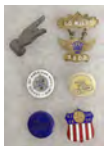
84 Child's Boneshaker Bicycle

C. 1878 Child's Boneshaker bicycle, cast
frame, red and gray, 24" x 20" diameter
wheels. Estimate: 1,500.00 - 2,200.00
Hammer Price: 3,000.00



85 Lot (6) Medals & Buttons

Lot 6 Medals and Button: R. I. Division
1898, Worcester 1895, Celluloid & Enamel
Buttons L.A.W. Good Roads, 100 Miles
1902, L.A.W. Enamel. Estimate: 75.00 -
125.00
Hammer Price: 150.00



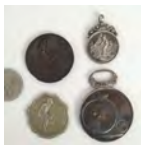
86 (4) Bicycle Medals

(4) bicycle medals: (1) silver, (3) bronze.
Estimate: 25.00 - 50.00
Hammer Price: 200.00



87 (4) Bicycle Medals

(4) Bicycle medals 62 grams sterling silver.
Estimate: 50.00 - 75.00
Hammer Price: 80.00



LOT #

88 Columbia Hard Tire Safety Bicycle

C. 1890 Columbia Lady's HTS. Sprung
front fork. Restored (with chrome).
Estimate: 2,500.00 - 2,800.00
Hammer Price: 2,800.00



89 Draisine Reproduction Bicycle

Draisine reproduction, 30" x 30" diameter
wheels. Ridden by Carl Burgwardt in
parades. Estimate: 700.00 - 900.00
Hammer Price: 3,800.00



90 Graphic Pneumatic Bicycle

C. 1898 Graphic Pneumatic Lady's Bicycle,
Graphic Cycle Company, NY. Excellent
original condition. Estimate: 400.00 -
600.00
Hammer Price: 2,300.00



91 Musselman Coaster Brake Display

Musselman Coaster Brake Display.
Estimate: 50.00 - 75.00
Hammer Price: 175.00



92 Tigress Lady's Pneumatic Bicycle

C. 1897 Tigress Lady's pneumatic, w/
lamp. Stoddard, Dayton, OH. Restored.
Estimate: 400.00 - 600.00
Hammer Price: 2,400.00



93 Gormully & Jeffery Pneumatic Bicycle

C. 1896 G & J men's model 20. With very
unusual accessory: removable walking
cane saddle. Tool bag, bell, lamp, wood
handlebars. Excellent original condition.
Estimate: 900.00 - 1,100.00
Hammer Price: 6,000.00



December 1, 2012 Pedaling History Bicycle Museum Auction 12/1/2012

LOT #

94 Spillane Reproduction High Wheel Ordinary Bicycle

28" child's Spillane Whitney reproduction high wheel bicycle. Excellent rider.
Estimate: 400.00 - 500.00
Hammer Price: 1,300.00



95 Star High Wheel Safety Bicycle

C. 1886 Special 45" Pony Star high wheel bicycle, serial #1392, HB Smith Machine Company, Smithville, NJ. Rare additional step, older restoration, rideable. Estimate: 4,500.00 - 5,500.00
Hammer Price: 7,750.00



96 Keating Pneumatic Bicycle

C. 1894 Keating men's pneumatic, Keating Wheel Company, Holyoke, MA. Old tires, unique frame, restored. Estimate: 700.00 - 900.00
Hammer Price: 1,500.00



97 Crescent Chainless Pneumatic Bicycle

C. 1899 Crescent #20 lady's chainless, Western Wheel Works, Chicago, IL. Restored, rideable. Estimate: 700.00 - 900.00
Hammer Price: 675.00



98 Shire Boneshaker Bicycle

C. 1878 Shire Boneshaker w/ unique period bell, 41" x 31" diameter tire, Manufactured in Detroit, MI. Original condition, recovered saddle. Estimate: 3,500.00 - 4,500.00
Hammer Price: 6,500.00



LOT #

100 Elgin Bluebird Balloon Bicycle

C. 1937 Elgin Bluebird balloon bicycle. Older restoration. Estimate: 4,500.00 - 6,500.00
Hammer Price: 8,250.00



101 Victor Cushion Tire Safety Bicycle

C. 1890 Victor Model C spring fork cushion tire safety #31054. Wrong saddle, restored. Estimate: 4,000.00 - 5,000.00
Hammer Price: 5,000.00



102 Simpson Ice Bicycle

C. 1900 "Saturn" by GH Simpson ice bicycle conversion. Lacks chain, loose chain ring. Estimate: 1,200.00 - 1,500.00
Hammer Price: 1,500.00



103 Old Hickory Pneumatic Bicycle

C. 1898 Old Hickory made by Tonk Mfg. Co. Chicago, IL. Wooden framed lady's pneumatic. Christy saddle, restored. This is supposedly the first American ladies wood safety. Estimate: 2,300.00 - 2,600.00
Hammer Price: 12,500.00



104 Gold and Ruby Bicycle Medal

Gold three part medal with ruby. Approx. 14k, 11 grams total weight. Signed "Wendeli" with original leather case. Estimate: 200.00 - 300.00
Hammer Price: 850.00



105 3 Piece Mantel Clock

3 Piece Mantel Clock w/Key signed "P. deSoete". Estimate: 250.00 - 350.00
Hammer Price: 1,400.00



December 1, 2012 Pedaling History Bicycle Museum Auction 12/1/2012

LOT #

106 Boneshaker Mantel Clock

Boneshaker mantel clock. Estimate: 100.00 - 200.00
Hammer Price: 550.00



107 Highwheel Bicycle Hub Lamp

Hub Lamp, unique trapazoidal shape, Chicago Burner. Estimate: 400.00 - 600.00
Hammer Price: 2,100.00



108 Gormully and Jeffery Bicycle Lamp

Gormully and Jeffery high body (6") hard tire safety oil lamp. Estimate: 250.00 - 450.00
Hammer Price: 800.00



109 Lucas Highwheel Hub Lamp

C. 1885 JC Lucas "King of the Road" Highwheel bicycle lamp with cracked side lens. Estimate: 800.00 - 1,200.00
Hammer Price: 2,500.00



110 Chicago "Headlight" Bicycle Lamp

Chicago "Headlight" oil lamp. Estimate: 100.00 - 200.00
Hammer Price: 500.00



111 High Wheel Hub Lamp with Cyclometer

C. 1883 "Columbia Queen of the Night" high wheel hub lamp with cyclometer. Estimate: 2,000.00 - 4,000.00
Hammer Price: 7,750.00



LOT #

112 Barrett Side by Side Bicycle

C. 1980 Barrett side by side sociable tandem. New condition. Estimate: 300.00 - 500.00
Hammer Price: 750.00



113 Lucas Bicycle Lamp

Jos Lucas & Sons - King of the Road Holophote bicycle lamp - "Premier Cycle Co, New York". Estimate: 200.00 - 400.00
Hammer Price: 775.00



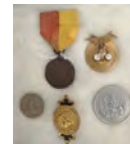
114 Bicycle Medals

C. 1906 - 1910 (7) connected silver and enamel medals. "STERLING, NY... ROBBINS CO ATTLEBURO". Estimate: 50.00 - 75.00
Hammer Price: 100.00



115 Bicycle Medals

(3) medals and aluminum token. Estimate: 25.00 - 50.00
Hammer Price: 100.00



116 Barnes White Flyer Pneumatic Bicycle

C. 1896 Barnes White Flyer, ladies, model #23 pneumatic. Manufactured in Syracuse, NY. Very good original condition. Estimate: 800.00 - 900.00
Hammer Price: 1,500.00



117 Ephemera Lot

Ephemera lot. Estimate: 25.00 - 35.00
Hammer Price: 125.00



December 1, 2012 Pedaling History Bicycle Museum Auction 12/1/2012

LOT #

118 Terrot Pneumatic Bicycle

C. 1904 Terrot men's pneumatic bicycle with rare 2 Speed and tool case. So called "retro-direct" pioneered by Paul de Vivie a.k.a. "Velocio". Pedal backwards to go up hill. Restored. Estimate: 1,500.00 - 1,800.00

Hammer Price: 4,800.00



119 Victor Pneumatic Racer Bicycle

C. 1895 Victor men's pneumatic racer. Restored by Bob Jameson. Estimate: 1,500.00 - 1,800.00

Hammer Price: 5,750.00



120 Invalid Tricycle

C. 1890 Invalid tricycle, with wicker seat. Includes bell. Rideable. Estimate: 300.00 - 400.00

Hammer Price: 750.00



121 Black Diamond Pneumatic Bicycle

C. 1898 Black Diamond pneumatic bicycle, Searls Mfg Co., Newark, NJ. Vertical stem handlebar. As found original. Estimate: 700.00 - 900.00

Hammer Price: 800.00



122 Bicycle Head Lamp

C.M. Hall Solar calcium head lamp, model S, Pat. 1896-99. Estimate: 50.00 - 100.00

Hammer Price: 80.00



123 Bicycle Head Lamp

Lucas "Silver King", oil head lamp. Estimate: 100.00 - 200.00

Hammer Price: 175.00



LOT #

124 Bicycle Head Lamp

"The Neverout", Rose Mfg. calcium head lamp with bracket. Estimate: 50.00 - 100.00

Hammer Price: 200.00



125 Ingo-Bike

C. 1933 early model Ingo-Bike. Manufactured by Ingersoll Div. of the Borg Warner Corp. Older paint. Estimate: 300.00 - 400.00

Hammer Price: 850.00



126 Bicycle Head Lamp

"The Buffalo" head lamp by Schoverling Day & Gales, NY. Estimate: 50.00 - 100.00

Hammer Price: 550.00



127 Cleveland Pneumatic Bicycle

C. 1898 Cleveland lady's pneumatic, manufactured by H.A. Lozier & Co. Cleveland, OH. Fixed gear, display tires, nice original. Estimate: 400.00 - 600.00

Hammer Price: 2,300.00



128 Bowden Spacelander Bicycle

C. 1960 Bowden "Spacelander" bicycle, white fiberglass, manufactured by, Bomard Industries. Excellent original condition. Estimate: 4,000.00 - 5,000.00

Hammer Price: 12,000.00



129 Bicycle Head Lamp

Solar calcium head lamp, The Badger Brass Co. Estimate: 50.00 - 100.00

Hammer Price: 90.00



December 1, 2012 Pedaling History Bicycle Museum Auction 12/1/2012

LOT #

130 Bicycle Head Lamp

Miller Majestic calcium head lamp.
Estimate: 50.00 - 100.00
Hammer Price: 90.00



131 Bicycle Head Lamp

Bauer, Germany, head lamp. Estimate:
50.00 - 75.00
Hammer Price: 60.00



132 Waverly Pneumatic Bicycle

C. 1896 Waverly men's pneumatic safety,
manufactured by Indiana Bicycle Co.,
Indianapolis, IN. Serial #111625. Good
original condition. Estimate: 500.00 -
700.00
Hammer Price: 1,500.00



133 Bicycle Head Lamp

Solar calcium head lamp, manufactured by,
The Badger Brass Co. Note unusual
handle grip. PAT. 1896-99. Estimate:
75.00 - 150.00
Hammer Price: 150.00



134 BSA Paratrooper Bicycle

World War two BSA Paratrooper folding
bicycle. Nice original. Estimate: 400.00 -
500.00
Hammer Price: 2,600.00



135 Schwinn Paramount Lightweight Bicycle

C. 1938 Schwinn Paramount track bicycle.
Includes shoes and helmet. Raced by Herb
Day. Estimate: 300.00 - 500.00
Hammer Price: 2,200.00



LOT #

136 Crescent Pneumatic Bicycle

C. 1899 Crescent men's pneumatic model
51 w/travel case. Manufactured by,
Western Wheel Works, Chicago, IL. New
Departure coaster brake, lamp, restored.
Estimate: 600.00 - 750.00
Hammer Price: 1,600.00



137 Silver King LUCAS oil head lamp

Silver King LUCAS oil head lamp.
Estimate: 50.00 - 75.00
Hammer Price: 225.00



138 High Wheel Bicycle Head Lamp

C. 1878 Dean Loves Comet Pickwick head
lamp. Estimate: 100.00 - 200.00
Hammer Price: 4,100.00



139 Bicycle Head Lamp

Electra calcium model B head lamp.
Estimate: 75.00 - 125.00
Hammer Price: 225.00



140 Bicycle Head Lamp

Bridgeport oil lamp. Excellent condition.
Estimate: 150.00 - 350.00
Hammer Price: 450.00



141 Monark Silver King Bicycle

C. 1937 Monark Silver King. Aluminum,
speedo, rack, locking fork, pump. Estimate:
200.00 - 400.00
Hammer Price: 1,400.00



December 1, 2012 Pedaling History Bicycle Museum Auction 12/1/2012

LOT #

142 Bicycle Head Lamp

Hard tire safety "The Pilot" oil lamp
(English). Estimate: 100.00 - 300.00
Hammer Price: 625.00



143 Water Bicycle

C. 1917 water bicycle, good original
condition. Estimate: 1,100.00 - 1,400.00
Hammer Price: 4,750.00



144 Bicycle Head Lamp

Solar cycle oil lamp with box, "The
Badger Brass MFG. Co. Estimate: 75.00 -
125.00
Hammer Price: 150.00



145 Bicycle Head Lamp

Salisbury #3 Oil Lamp, No label.
Estimate: 250.00 - 350.00
Hammer Price: 400.00



146 Telegram Pneumatic Bicycle

C. 1895 Telegram ladies' pneumatic.
Includes tool box and stamped saddle.
Manufactured in Milwaukee. Very good
original. Estimate: 400.00 - 600.00
Hammer Price: 550.00



147 Bicycle Head Lamp

Solar carbide lamp with box. Estimate:
100.00 - 200.00
Hammer Price: 325.00



LOT #

148 Bicycle Head Lamp

Oil head lamp, "Never Out" by Rose Mfg.
Co. includes box. Estimate: 75.00 - 125.00
Hammer Price: 200.00



149 Wolf American Tandem Tricycle

C. 1899 Wolf American tandem tricycle
sociable, manufactured in NY. Repainted,
wrong pedals. Estimate: 1,500.00 -
1,800.00
Hammer Price: 3,600.00



150 Bicycle Head Lamp Lot

Lot (5) head lamps: New Brilliant Freeman
Thomas (cracked lens), Lucas-Calcia Cadet
(no bracket, cracked lens), Twentieth
Century, The Eclipse and The Everlit.
Estimate: 50.00 - 100.00
Hammer Price: 400.00



151 Bicycle Head Lamp

Columbia Model C calcium head lamp.
Estimate: 75.00 - 150.00
Hammer Price: 80.00



152 Lucas Calcium Generator

Lucas calcium carbide generator. Estimate:
50.00 - 75.00
Hammer Price: 60.00



153 Irish Mail Quadracycle

C. 1930's Irish Mail w/ steering wheel,
differential steering, transmission.
Estimate: 200.00 - 300.00
Hammer Price: 175.00



December 1, 2012 Pedaling History Bicycle Museum Auction 12/1/2012

LOT #

154 Bicycle Head Lamp

Lohmann-Perfecta calcium head lamp with bracket. Estimate: 75.00 - 150.00
Hammer Price: 80.00



155 Bicycle Head Lamp

Matthews and Willard oil head lamp with bracket. Estimate: 75.00 - 125.00
Hammer Price: 150.00



156 Bicycle Head Lamp

Lucas Calcia Cadet calcium head lamp. Estimate: 50.00 - 100.00
Hammer Price: 90.00



157 Bicycle Head Lamp

Search Light head lamp. Estimate: 50.00 - 75.00
Hammer Price: 80.00



158 Kodak Bicycle Camera

Kodak Bicycle Camera with bicycle case and catalog photocopy. Estimate: 150.00 - 250.00
Hammer Price: 1,300.00



159 Wooden Bicycle Fork Patterns

Lot (5) wooden toolmakers bicycle fork patterns. Estimate: 125.00 - 200.00
Hammer Price: 250.00



160 Velocipede Cup

19th c. English ceramic transfer decorated Velocipede cup. Estimate: 75.00 - 125.00
Hammer Price: 150.00



LOT #

161 Bicycle Saddle

Christy saddle, ladies No. 9. Restored. Estimate: 50.00 - 100.00
Hammer Price: 475.00



162 Bicycle Saddle

Sager saddle with unique strap webbing. Estimate: 50.00 - 100.00
Hammer Price: 325.00



163 Henley Scooter

C. 1920's Henley Scooter "Roll-a-bout". Estimate: 50.00 - 100.00
Hammer Price: 425.00



164 Saddle Cover

19th c. saddle cover. 1st Booby Prize, L. C. C. Race 1889. Estimate: 100.00 - 200.00
Hammer Price: 175.00



165 Columbia Sidewalk Bicycle

C. 1930's Columbia sidewalk bicycle. Estimate: 100.00 - 150.00
Hammer Price: 150.00



166 Saddle Cover

Saddle cover with reed center. Estimate: 50.00 - 75.00
Hammer Price: 200.00



167 Irish Mail Quadracycle

C. 1910 Irish Mail, wood scooter. Hill Standard, Indiana. Nice original. Estimate: 200.00 - 250.00
Hammer Price: 575.00



December 1, 2012 Pedaling History Bicycle Museum Auction 12/1/2012

LOT #

168 L.A.W. Buttons

Board display of L.A.W. Buttons. Estimate: 50.00 - 75.00
Hammer Price: 250.00



169 High Wheel Ordinary Buttons

Board display of high wheel ordinary buttons. Estimate: 50.00 - 75.00
Hammer Price: 275.00



170 Desk Pen Holder

19th c. spelter metal desk, pen holder. Estimate: 30.00 - 50.00
Hammer Price: 425.00



171 Sturmev Archer Display

Sturmev Archer 3 speed dealer display. Estimate: 50.00 - 100.00
Hammer Price: 200.00



172 Schwinn Black Phantom Balloon Bicycle

C. 1955 Schwinn Black Phantom 20" boys bicycle. Restored. Estimate: 400.00 - 600.00
Hammer Price: 3,500.00



173 Indian Pneumatic Bicycle

C. 1915 Indian men's tank model pneumatic bicycle with head lamp. Manufactured by Hendee, Springfield, MA. Restored. Estimate: 800.00 - 1,200.00
Hammer Price: 3,100.00



LOT #

174 Bicycle Saddle

Christy saddle. Restored. Estimate: 50.00 - 100.00
Hammer Price: 350.00



175 Billy Boy - Sidewalk Bicycle

C. 1930 Billy Boy - Sidewalk Bicycle with disk wheels. Restored. Estimate: 150.00 - 250.00
Hammer Price: 225.00



176 Bicycle Medal Lot

(4) German bicycle medals. Estimate: 25.00 - 45.00
Hammer Price: 110.00



177 Bicycle Medal Lot

Lot (4) medals: Amateur Bicycle League, Cycle Trades, Ohio Amateur Bicycle League, G. Osgood Champion. Estimate: 50.00 - 75.00
Hammer Price: 125.00



178 Daycycle Pneumatic Bicycle

Men's daycycle pneumatic. Original condition Estimate: 700.00 - 800.00
Hammer Price: 600.00



179 Bicycle Medal Lot

Lot (6) Italian cyclist medals. Estimate: 25.00 - 35.00
Hammer Price: 30.00



December 1, 2012 Pedaling History Bicycle Museum Auction 12/1/2012

LOT #

180 L.A.W. Enamels Lot

Lot (5) L.A.W. Enamel Discs: Toledo, Penna., '98/'99, (2) L.A.W. Estimate: 25.00 - 50.00
Hammer Price: 200.00



181 Bicycle Head Lamp

Radsonne German bicycle head lamp.
Estimate: 50.00 - 100.00
Hammer Price: 80.00



182 Emblem Pneumatic Safety Bicycle

C. 1896 Emblem women's safety pneumatic, manufactured by WG Shack, Buffalo, NY. Original condition as found.
Estimate: 200.00 - 400.00
Hammer Price: 300.00



183 Bicycle Head Lamp

Bicycle oil head lamp, "Jim Dandy" manufactured by: Plume & Atwood Mfg. Co. Estimate: 50.00 - 75.00
Hammer Price: 125.00



184 Victor Victoria Pneumatic Bicycle

C. 1896 Victor Victoria pneumatic bicycle. Restored. Estimate: 500.00 - 700.00
Hammer Price: 1,000.00



185 Bicycle Head Lamp

C. 1897 oil head lamp, B & R. Estimate: 40.00 - 60.00
Hammer Price: 250.00



LOT #

186 Bicycle Head Lamp

French Candle #1 head lamp. Estimate: 75.00 - 125.00
Hammer Price: 300.00



187 Bicycle Head Lamp

French Candle #2 head lamp. Estimate: 75.00 - 125.00
Hammer Price: 90.00



188 Schwinn New World Racer Bicycle

C. 1930, Heil Brothers "Champion", lightweight racer. Schwinn New World frame. Good original condition. Estimate: 500.00 - 700.00
Hammer Price: 950.00



189 Bicycle Head Lamp

Twentieth Century oil head lamp with bracket. Estimate: 50.00 - 100.00
Hammer Price: 80.00



190 Western Union Pneumatic Bicycle

C. 1895 Western Union Sturmer men's pneumatic. With lamp, catalog copy, and western union sign. Original condition. Estimate: 400.00 - 600.00
Hammer Price: 950.00



191 Victoria Pneumatic Bicycle

C. 1897 Victoria lady's pneumatic, manufactured by Overman Wheel company, Chicopee, MA. Suspension saddle, old tires. Restored. Estimate: 400.00 - 600.00
Hammer Price: 2,300.00



December 1, 2012 Pedaling History Bicycle Museum Auction 12/1/2012

LOT #

192 Bicycle Head Lamp

Imperial oil head lamp. Estimate: 50.00 - 75.00
Hammer Price: 100.00



193 Bicycle Head Lamp

Candle lamp. Estimate: 50.00 - 75.00
Hammer Price: 300.00



194 Bicycle Head Lamp

"Columbia" carbide head lamp.
Manufactured by Hine Watt. Estimate: 75.00 - 125.00
Hammer Price: 60.00



195 Bicycle Timer Ribbon Lot

Lot: (6) "Timer" Medals/Ribbons.
"Whitehead & Hoag Co., JUNE 12, '94".
Estimate: 25.00 - 50.00
Hammer Price: 60.00



196 Bicycle Medal Lot

(2) Medals: Boston Spring Meet & Worcester 1892. Estimate: 50.00 - 75.00
Hammer Price: 175.00



197 LAW Button Lot

Lot: L.A.W. buttons. (12) steel buttons (1) gold button with ruby. Estimate: 24.00 - 45.00
Hammer Price: 100.00



LOT #

198 Bicycle Medal Lot

Lot (4) Medals: Springfield Meet 1883, L.A.W. Conn. Division, Highwheel & Trike, Rider taking header Phila. Estimate: 40.00 - 60.00
Hammer Price: 60.00



199 Medal and Button Lot

Lot (7) Mass. Division Medals & Buttons: 1892, 93, 94, 95, 97, 98. Estimate: 100.00 - 175.00
Hammer Price: 200.00



200 J. C. Higgins Balloon Bicycle

C. 1957 J. C. Higgins Men's, "deluxe" balloon bicycle, with speedometer.
Restored. Estimate: 400.00 - 600.00
Hammer Price: 1,600.00



201 German Stein Lot

Lot: Glass German Steins, 1921 "Lengenfeld". Estimate: 50.00 - 75.00
Hammer Price: 125.00



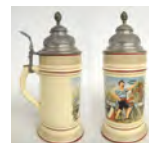
202 German Mug and Stein Lot

Lot: German stein and mug with safeties. Estimate: 25.00 - 45.00
Hammer Price: 80.00



203 German Stein

German stein 1/2 L. Estimate: 50.00 - 75.00
Hammer Price: 80.00



December 1, 2012 Pedaling History Bicycle Museum Auction 12/1/2012

LOT #

204 German Stein Lot

Lot: German Steins " Alt-Grenzau Western Germany". Estimate: 25.00 - 50.00
Hammer Price: 90.00



205 German Mug

German mug "RADFAHR-VEREIN, HELVETIA MUNCHEN 1004". 1/2 L.
Estimate: 25.00 - 50.00
Hammer Price: 125.00



206 German Stein Lot

Lot: German Stein 1909
"JUBILAUMS-BUNDESTAG MUNCHEN 1909 16-20 JULI", Blue Glaze with Highwheel. 1 L. and 1/2 L. Estimate: 50.00 - 75.00
Hammer Price: 150.00



207 German Glass Stein and Mug Lot

Lot: German glassware (3) Steins, (1) Glass. Estimate: 25.00 - 50.00
Hammer Price: 175.00



208 German Bicycle Trophy

German trophy with removable top. "1 Preis Paul Pfeil Hauptfahr". Estimate: 50.00 - 75.00
Hammer Price: 70.00



209 German Stein

German stein with safety and ribbon. 1/2 L.
Estimate: 50.00 - 75.00
Hammer Price: 200.00



LOT #

210 German Stein

German Stein with safety. Estimate: 50.00 - 100.00
Hammer Price: 150.00



211 German Stein Lot

Lot (2) German steins, one with locking top, other has no top. Estimate: 50.00 - 75.00
Hammer Price: 125.00



212 German Stein Lot

Lot (2) German Steins. Estimate: 50.00 - 100.00
Hammer Price: 80.00



213 German Stein

German Stein with safety. 1/2 L. Estimate: 100.00 - 175.00
Hammer Price: 100.00



214 German Stein

German stein with safety. 1/2 L. Estimate: 50.00 - 75.00
Hammer Price: 60.00



215 German Stein

German stein with transfer decorated safety rider. 1/2L. Estimate: 75.00 - 125.00
Hammer Price: 70.00



216 Pitcher - Velocipede

Pitcher - Velocipede "C & E BICYCLES".
Estimate: 50.00 - 125.00
Hammer Price: 1,700.00



December 1, 2012 Pedaling History Bicycle Museum Auction 12/1/2012

LOT #

217 Beeker Lot

Lot: German Pewter, glass and silver plate
beekers. Estimate: 50.00 - 75.00
Hammer Price: 50.00



218 German Mettlach Stein

German Mettlach Stein #1566. 1/2L.
Estimate: 250.00 - 350.00
Hammer Price: 325.00



219 German Mettlach Stein

German Mettlach Stein #2140, safety rider,
"PRO-SIT." 1/2L. Estimate: 100.00 -
200.00
Hammer Price: 225.00



220 German Stein

German stein with safety. 1/2L. Estimate:
75.00 - 125.00
Hammer Price: 150.00



221 Daisy Bell Pitcher and Mug

Daisy Bell Pitcher and Mug "Crown Devon
Fielding's England". Estimate: 75.00 -
125.00
Hammer Price: 70.00



222 German Stein

German Stein - "J. REINMANN
MUNCHEN, GESETZLICH
GESCHUTZT". 1/2L. Estimate: 100.00 -
175.00
Hammer Price: 150.00



LOT #

223 German Stein

German Stein with safety. 2L. Estimate:
100.00 - 200.00
Hammer Price: 175.00



224 German Stein

German stein, with safety.
"DEMELDORADO R.C. GEW. VON
HERRN L, GROTE". 2L. Estimate:
300.00 - 500.00
Hammer Price: 525.00



225 Pocket Watch

Pocket watch with cyclist. Not running.
Estimate: 50.00 - 75.00
Hammer Price: 325.00



226 Wood Shelf

Wood wall shelf with mirror and high
wheel motif. Estimate: 50.00 - 100.00
Hammer Price: 70.00



227 Cycle Infantry Drive Regulations Book Lot

Lot: 1892 Cycle Infantry Drive Regulations
Book and 4 L.A.W. Membership cards.
Estimate: 25.00 - 50.00
Hammer Price: 90.00



228 Cabinet Card / Photography Lot

Lot (2) Cabinet Cards, Tin Type,
Photograph. Kids with tricycles. Estimate:
50.00 - 75.00
Hammer Price: 40.00



December 1, 2012 Pedaling History Bicycle Museum Auction 12/1/2012

LOT #

229 Photography Lot

Lot (7) photographs. Estimate: 75.00 - 125.00
Hammer Price: 100.00



230 Photography Lot

Lot (2) Photographs: Rhodes Trio World Tour safety and 2 cabinet cards. Estimate: 50.00 - 100.00
Hammer Price: 60.00



231 Schwinn "Pea Picker" Bicycle

Schwinn 5-speed stick, Stingray, spring front fork. Good original condition. Estimate: 300.00 - 500.00
Hammer Price: 825.00



232 Cabinet Card

Cabinet Card: Columbia Expert "Dunklee and Bau, Northampton, MA, Brattleboro, VT, Greenfield, MA". Estimate: 50.00 - 75.00
Hammer Price: 125.00



233 Cabinet Card

Cabinet Card: Columbia Light Roadster 1885-1886 "Nesbit, Bloomsburg, PA". Estimate: 50.00 - 75.00
Hammer Price: 125.00



234 Cabinet Card

Cabinet Card: Victor 1885 "Whitewater Goodman Wisconsin". Estimate: 50.00 - 75.00
Hammer Price: 100.00



LOT #

235 Cabinet Card

Cabinet Card: High wheel ordinary 1883 "Taylor, Rochester, NY". Estimate: 50.00 - 75.00
Hammer Price: 100.00



236 Cabinet Card

Cabinet Card: Courtney Machinists 1883 "Bogardus Souvenir Card, New York". Estimate: 50.00 - 75.00
Hammer Price: 200.00



237 Cabinet Card

Cabinet Card: Man with High Wheel. "Partridge's, Portland, OR". Estimate: 50.00 - 75.00
Hammer Price: 125.00



238 Cabinet Card

Cabinet Card: Gormulley & Jeffery American Champion 1885 "Anton Rohde Chicago". Estimate: 50.00 - 75.00
Hammer Price: 125.00



239 Children and Holiday Post Card Lot

Lot: (12) Postcards. Estimate: 20.00 - 30.00
Hammer Price: 50.00



240 Ephemera Lot

Lot of Bicycle Ephemera including trading cards, road book, address book, cyclist dictionary. Estimate: 40.00 - 60.00
Hammer Price: 80.00



December 1, 2012 Pedaling History Bicycle Museum Auction 12/1/2012

LOT #

241 Michigan L.A.W. & Indiana LAW Road Books

Lot: Michigan L.A.W. 1896 & Indiana L.A.W. road books. Estimate: 25.00 - 50.00
Hammer Price: 70.00



LOT #

247 Cyclometer

Cyclometer with box: 28", "Standard Midget", Standard Watch Co., New York. Estimate: 50.00 - 75.00
Hammer Price: 250.00



242 McClures Magazine Lot

1897 McClures magazines, bound. Estimate: 25.00 - 35.00
Hammer Price: 30.00



248 L.A.W. Cast Bell

L.A.W. Cast Bell, CORBIN No. 5A. Estimate: 50.00 - 75.00
Hammer Price: 350.00



243 Post Card Lot

Lot (29) post cards. Estimate: 75.00 - 125.00
Hammer Price: 150.00



249 Cast Small Eagle Bell

Cast small eagle bell, Bristol. Estimate: 50.00 - 75.00
Hammer Price: 200.00



244 Wheelmen Map Collection

Lot: NY Map/York County Wheelmen/Essex County/ NY Road Book L.A.W. Estimate: 25.00 - 45.00
Hammer Price: 60.00



250 Wheel Roller Bell Cast

Wheel roller bell cast. Estimate: 25.00 - 50.00
Hammer Price: 200.00



245 Road Book and Map Lot

Lot of driving and cycling road maps 1885 southeast Mass road book, Brockton/Middlesex road books. Estimate: 75.00 - 125.00
Hammer Price: 100.00



251 Cyclometer

26" Standard Cyclometer with Box. Standard Watch Co., New York. Estimate: 100.00 - 200.00
Hammer Price: 175.00



252 Turtle Cast Bell

Turtle cast bell. Estimate: 50.00 - 75.00
Hammer Price: 225.00



246 Western Flyer Bicycle

Western Flyer bicycle, men's tank model. Reproduction. Estimate: 100.00 - 200.00
Hammer Price: 325.00



253 Small Cast USA Shield Bell

Small cast USA shield bell. Estimate: 25.00 - 50.00
Hammer Price: 275.00



December 1, 2012 Pedaling History Bicycle Museum Auction 12/1/2012

LOT #

254 Cast Century Bell

Cast century bell. Estimate: 25.00 - 50.00
Hammer Price: 275.00



255 Cast Dual Tone Egg Bell

Cast dual tone egg bell. Estimate: 25.00 - 50.00
Hammer Price: 85.00



256 Cyclometer

Cyclometer with trip counter: The Veeder Mfg. Co., Hartford Conn. Estimate: 25.00 - 50.00
Hammer Price: 85.00



257 Cyclometer

Cyclometer: 28" "Shepard's Trip", Waterbury Conn. (Waterbury Buckle Co.). Estimate: 25.00 - 50.00
Hammer Price: 75.00



258 Cyclometer

Cyclometer: Butcher Cyclometer Co., Boston USA, 54". Estimate: 50.00 - 75.00
Hammer Price: 3,900.00



259 Cyclometer

Cyclometer: Butcher Cyclometer Co., Boston USA, 30". Estimate: 200.00 - 300.00
Hammer Price: 2,600.00



LOT #

260 Cast Wind up Bell

Cast wind up bell. Estimate: 25.00 - 50.00
Hammer Price: 150.00



261 Cyclometer

Cyclometer: 28" Lowe's Cyclometer, Capitol Mfg. Co., Chicago Ill. Estimate: 100.00 - 200.00
Hammer Price: 425.00



262 Cyclometer

Cyclometer: Veeder Mfg. Co., Hartford Conn. Estimate: 25.00 - 50.00
Hammer Price: 90.00



263 Bell Lot

Lot of (2) bells. Estimate: 25.00 - 35.00
Hammer Price: 150.00



264 Cyclometer

Cyclometer: 28" New Departure, Bristol Conn. Estimate: 25.00 - 50.00
Hammer Price: 60.00



265 Boy Scout Bicycle Bell

Boy Scout bicycle bell, "Be Prepared". Estimate: 20.00 - 40.00
Hammer Price: 225.00



266 Bicycle Horn

Bicycle horn. Estimate: 25.00 - 35.00
Hammer Price: 150.00



December 1, 2012 Pedaling History Bicycle Museum Auction 12/1/2012

LOT #

267 Wheel Roller Bell

Wheel Roller Bell, made in USA. Estimate:
30.00 - 50.00
Hammer Price: 70.00



268 Highwheel or Hard Tire Safety Bell

Highwheel or hard tire safety bell.
Estimate: 100.00 - 200.00
Hammer Price: 1,300.00



269 Cyclometer

Cyclometer with box: 28" New Departure,
Bristol Conn. Estimate: 25.00 - 50.00
Hammer Price: 200.00



270 Cyclometer

Cyclometer: Joseph Lucas LTD, "King of
the Road" (made in England). Estimate:
25.00 - 50.00
Hammer Price: 30.00



271 Cyclometer

Cyclometer: Seth Thomas, made in USA.
Estimate: 50.00 - 75.00
Hammer Price: 175.00



272 Sherrell Classic Bicycle

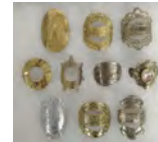
David Sherrell Classic balloon bicycle.
Excellent condition. Estimate: 400.00 -
600.00
Hammer Price: 4,100.00



LOT #

273 Head Badge Lot

(10) Head badges Estimate: 40.00 - 60.00
Hammer Price: 1,100.00



274 Lindy Head Badge

Lindy Head Badge, The Shelby Cycle Co.
USA. Estimate: 100.00 - 200.00
Hammer Price: 425.00



275 Head Badge Lot

(10) head badges. Estimate: 50.00 - 100.00
Hammer Price: 875.00



276 Head Badge Lot

(20) head badges Estimate: 50.00 - 75.00
Hammer Price: 425.00



277 Head Badge Lot

(16) head badges. Estimate: 25.00 - 50.00
Hammer Price: 200.00



278 Head Badge Lot

(9) head badges. Estimate: 50.00 - 100.00
Hammer Price: 325.00



279 (9) Printers Blocks

(9) printers blocks including safety,
highwheel, lamp & bell designs. Estimate:
25.00 - 35.00
Hammer Price: 90.00



December 1, 2012 Pedaling History Bicycle Museum Auction 12/1/2012

LOT #

280 Misc. Dealer Advertising Lot

Misc. hang tags & thimble Lot. incl. search light and Boston laminated rims. Estimate: 40.00 - 60.00
Hammer Price: 80.00



LOT #

286 Bicycle Collectable Lot

Collection of approx. (15) bicycle related tins including tube repair etc. Estimate: 100.00 - 200.00
Hammer Price: 100.00



281 Whistle & Siren Lot

Advertising whistle, Chicco Bicycle Tires and nickel plate siren. Estimate: 25.00 - 45.00
Hammer Price: 90.00



287 Schwinn Panther Bicycle

C. 1960 Schwinn "Panther" bicycle. Original. Estimate: 100.00 - 200.00
Hammer Price: 400.00



282 Lot (2) Whistles

B.G.I. Co. Universal NO.1 2 tone whistle and The Acme Thunderer (made in England) Estimate: 25.00 - 35.00
Hammer Price: 50.00



288 Photo Easel

Safety bicycle photo easel. Estimate: 30.00 - 50.00
Hammer Price: 100.00



283 Lot of Collapsible Cups

Lot of collapsible cups incl: Niagara Falls, Vest Pocket Cup, L.A.W. etc. Estimate: 75.00 - 125.00
Hammer Price: 150.00



289 Imperial Pneumatic Bicycle

C. 1900 Imperial pneumatic, manufactured by Ames & Frost Co., Chicago, IL. Includes bell. Older restoration. Estimate: 200.00 - 300.00
Hammer Price: 400.00



284 Pocket Knife Lot

Lot (2) pocket knives. Estimate: 40.00 - 60.00
Hammer Price: 325.00



290 New Departure Letter Opener

New Departure letter opener. Estimate: 25.00 - 45.00
Hammer Price: 250.00



285 Pierce Pneumatic Racer

c. 1920 Pierce made in Angola, NY. Estimate: 400.00 - 600.00
Hammer Price: 485.00



291 L.A.W. Tip Tray

L.A.W. Tip Tray. Darling & Murphy "Around the United States by Bicycle". Estimate: 25.00 - 45.00
Hammer Price: 60.00



December 1, 2012 Pedaling History Bicycle Museum Auction 12/1/2012

LOT #

292 Whistle Lot

3 tone whistle (made in England) and standard whistle on chain. Estimate: 50.00 - 75.00
Hammer Price: 125.00



293 Stevengraph

Stevengraph, high wheel race. Frame size: 8 1/2 x 11 1/2". Estimate: 75.00 - 125.00
Hammer Price: 300.00



294 54" Wheel for High Wheel Bicycle

54" Wheel Rim for high wheel bicycle, English, circa 1884. Estimate: 200.00 - 300.00
Hammer Price: 225.00



295 A & P Tea Company Die Cut

C. 1883 Framed A & P Tea Co. Die Cut of highwheel. Site: 9 1/2 x 6 3/4" Estimate: 40.00 - 60.00
Hammer Price: 150.00



296 Monark Silver King Balloon Bicycle

C. 1948 Silver King Monark balloon bicycle, hex tube aluminum frame, with speedometer. Estimate: 500.00 - 700.00
Hammer Price: 5,000.00



297 Monark Silver King Balloon Bicycle

C. 1937 Monark aluminum Silver King "Flo Cycle" balloon bicycle, with speedometer and headlight. Estimate: 400.00 - 600.00
Hammer Price: 2,700.00



LOT #

298 Fin de Cycle Great Barrington Mass Bike Rack

Fin de Cycle Great Barrington Mass Bike Rack Estimate: 200.00 - 400.00
Hammer Price: 475.00



299 Syracuse Cycling Club 1890 - Framed

Syracuse Cycling Club 1890 - framed. Estimate: 150.00 - 250.00
Hammer Price: 125.00



300 Harley Davidson Bicycle NOS

Harley Davidson commemorative bicycle, 1998, NOS. Estimate: 150.00 - 250.00
Hammer Price: 875.00



301 19th C. Stoneware Beer Bottle

19th C. English stoneware beer bottle. Estimate: 25.00 - 35.00
Hammer Price: 70.00



302 1880 Photo - L.A.W. Rhode Island Meet

1880 Photo - L.A.W. Rhode Island Meet. Site: 7 x 9". Estimate: 75.00 - 125.00
Hammer Price: 425.00



303 Schwinn Cycle Truck

C. 1950 Schwinn Cycle Truck. Restored. Estimate: 300.00 - 500.00
Hammer Price: 825.00



304 Illuminated Columbia Sign

C. 1950's illuminated Columbia dealers sign. The Ohio Adv. Display Co. Estimate: 75.00 - 150.00
Hammer Price: 600.00



December 1, 2012 Pedaling History Bicycle Museum Auction 12/1/2012

LOT #

305 Print: Horse vs. Bike Race 1887

Framed Print: Horse vs. Bike Race 1887.
Site: 13 x 9 1/2". Estimate: 50.00 - 75.00
Hammer Price: 125.00



306 Lot (11) License Plates / Badges

Lot (11) license plates / badges (Owatonna, Minn, Dickinson, ND, Lewistown Mont., Fairview etc). Estimate: 25.00 - 50.00
Hammer Price: 100.00



307 Original Columbia Poster Water Color

Original water color for Columbia poster - Framed. 13 x 8 1/4". Estimate: 50.00 - 100.00
Hammer Price: 300.00



308 Graphite Sketch

Framed pencil drawing park setting. Site: 11 1/2 x 16 1/2". Estimate: 150.00 - 250.00
Hammer Price: 40.00



309 Columbia Flyer

Large format Columbia advertising / flyer 1888 "Bicycling World and L.A.W. bulletin plate No. 3". Site: 11 x 8". Estimate: 50.00 - 100.00
Hammer Price: 125.00



310 License Plates / Badges Lot

Lot (10) license plates / badges, "Wichita, Minneapolis, Hawaii, Long Beach, Akron, Austin, Mishawaka". Estimate: 25.00 - 50.00
Hammer Price: 80.00



LOT #

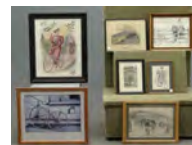
311 Framed Victor - Victoria Advertisement

Framed Victor - Victoria Advertisement, artist Will Bradley. Site: 14 1/2" x 9 1/2". Estimate: 75.00 - 125.00
Hammer Price: 90.00



312 Ephemera Lot

Lot: Framed images incl. Print L.A.W. Meet Ride 1883. Estimate: 25.00 - 50.00
Hammer Price: 150.00



313 Lithograph / Print

Lithograph / print 1819 - Dandy Charger framed "John Hudson, London, Cheapside". Site: 7 1/2 x 10 1/2". Estimate: 100.00 - 200.00
Hammer Price: 400.00



314 Lithograph / Print

Lithograph / print 1819 - "A Pilentum" framed. Site: 8 1/4 x 9 1/2". Estimate: 125.00 - 225.00
Hammer Price: 400.00



315 Lot (2) Photographs

(2) Large format photographs: 1896 youth champ & man safety 1894 Columbia. Site: 10 1/8 x 13 1/2". Estimate: 125.00 - 225.00
Hammer Price: 150.00



316 English Print

English Print "Mr. Pickwick goes to France..." Estimate: 25.00 - 50.00
Hammer Price: 60.00



December 1, 2012 Pedaling History Bicycle Museum Auction 12/1/2012

LOT #

317 Die Cuts

Framed die cuts with bikes. Frame size: 7 1/2 x 21 1/2". Estimate: 25.00 - 50.00
Hammer Price: 100.00



318 Bicycle Collectable Lot

Lot of (7) misc., posters and trays.
Estimate: 25.00 - 35.00
Hammer Price: 60.00



319 Pair 24" Wood Rims

Pair 24" Wood Rims. Estimate: 25.00 - 50.00
Hammer Price: 70.00



320 Gillette Ambassador 24" Tires - Pair

Gillette Ambassador 24" Tires - Pair.
Estimate: 50.00 - 75.00
Hammer Price: 30.00



321 Bicycle Bell Lot

(3) bicycle bells. Estimate: 25.00 - 45.00
Hammer Price: 50.00



322 Pair 24" US Chain Tread Tires

Pair 24" US Chain Tread Tires. Estimate: 50.00 - 75.00
Hammer Price: 90.00



323 18" Ordinary Rear Rim

18" Ordinary Rear Rim. Estimate: 50.00 - 75.00
Hammer Price: 10.00



LOT #

324 Columbia Pneumatic Bicycle

C. 1910 Columbia Boys 20" pneumatic bicycle. Includes 20th C. lamp, lacks grips, old tires. Restored. Estimate: 200.00 - 300.00
Hammer Price: 500.00



325 Pair 26" Wood Rims

Pair 26" wood rims "Plymouth Ind." 1893.
Estimate: 25.00 - 50.00
Hammer Price: 40.00



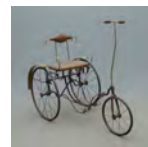
326 Pair 28" Wood Rims

Pair 28" wood rims "Lobdell". Estimate: 25.00 - 50.00
Hammer Price: 150.00



327 Fairy Tricycle

Fairy Tricycle: C. 1900 Gendron Wheel Co. Toledo, OH, 22" x 14". Original condition with wood fenders. Estimate: 150.00 - 250.00
Hammer Price: 500.00



328 Pair 24" US Chain Tread Tires

Pair 24" US Chain Tread Tires. Estimate: 50.00 - 75.00
Hammer Price: 60.00



329 Bullet Coaster

C. 1920 Bullet Coaster. Wood with tracks, two pieces. Original condition. Estimate: 100.00 - 200.00
Hammer Price: 175.00



December 1, 2012 Pedaling History Bicycle Museum Auction 12/1/2012

LOT #

330 Reproduction Cast Iron Bicycle Stand

Reproduction cast iron bicycle stand.

Estimate: 50.00 - 75.00

Hammer Price: 175.00



331 Reproduction Cast Iron Bicycle Stand

Reproduction cast iron bicycle stand.

Estimate: 50.00 - 75.00

Hammer Price: 225.00



332 Reproduction Cast Iron Bicycle Stand

Reproduction cast iron bicycle stand.

Estimate: 50.00 - 75.00

Hammer Price: 225.00



333 Reproduction Cast Aluminum Bicycle Stand

Reproduction cast iron bicycle stand.

Estimate: 25.00 - 50.00

Hammer Price: 300.00



334 Reproduction Cast Aluminum Bicycle Stand

Reproduction cast iron bicycle stand.

Estimate: 25.00 - 50.00

Hammer Price: 325.00



335 Reproduction Cast Aluminum Bicycle Stand

Reproduction cast iron bicycle stand.

Estimate: 25.00 - 50.00

Hammer Price: 375.00



336 Texas Bicycle License Plate Lot

Lot (17) 1948-1964 Austin, Texas bicycle license plates. Estimate: 25.00 - 50.00

Hammer Price: 125.00



LOT #

337 Reproduction Cast Aluminum Bicycle Stand

Reproduction cast iron bicycle stand.

Estimate: 25.00 - 50.00

Hammer Price: 400.00



338 Wolff Pneumatic Bicycle

C. 1897 Wolff American pneumatic bicycle, made by R.H. Wolff and Co., NY. Christie saddle. As found original condition. Estimate: 300.00 - 500.00
Hammer Price: 1,700.00



339 Reproduction Cast Aluminum Bicycle Stand

Reproduction cast iron bicycle stand.

Estimate: 25.00 - 50.00

Hammer Price: 425.00



340 Reproduction Cast Aluminum Bicycle Stand

Reproduction cast iron bicycle stand.

Estimate: 25.00 - 50.00

Hammer Price: 400.00



341 Bicycle Stand Lot

Lot of (8) misc. bicycle stands. Estimate: 25.00 - 35.00

Hammer Price: 225.00



342 Shogun - Men's 10 Speed Racer

C. 1985 Shogun men's 10 speed pursuit bike. Estimate: 75.00 - 150.00
Hammer Price: 225.00



December 1, 2012 Pedaling History Bicycle Museum Auction 12/1/2012

LOT #

343 Bicycle Toy Lot

Lot of (3) bicycle toys. Estimate: 10.00 - 20.00
Hammer Price: 15.00



344 Bicycle Models

Lot of (2) bicycle models. Estimate: 10.00 - 20.00
Hammer Price: 15.00



345 Bicycle Cigar Box & Advertising Ruler

Early "Bike" cigar box and advertising ruler. Estimate: 10.00 - 20.00
Hammer Price: 40.00



346 Penny Farthing Plate Lot

Lot of (2) "1872-1972" penny farthing plates. Estimate: 10.00 - 20.00
Hammer Price: 75.00



347 Bicycle Porcelain Lot

Lot including early flow blue cup along with New Hall Hanley dish. Estimate: 10.00 - 20.00
Hammer Price: 50.00



348 VIM Deluxe Tandem Bicycle

VIM Deluxe tandem bicycle. Vim Cycle Co. Estimate: 200.00 - 300.00
Hammer Price: 400.00



350 Meister Lightweight Bicycle

Meister lady's lightweight bicycle with tennis bracket on front fork. Rod breaks. Original condition. Estimate: 200.00 - 300.00
Hammer Price: 275.00



LOT #

361 German Wood Shelf

German wood shelf unit with High Wheel ordinary "Deschutzt". Estimate: 75.00 - 125.00
Hammer Price: 150.00



362 Bicycle Chocolate Mold Lot

(5) bicycle chocolate molds. Estimate: 75.00 - 125.00
Hammer Price: 600.00



366 Bicycle Bell Lot

Lot of three bicycle bells. Estimate: 25.00 - 35.00
Hammer Price: 90.00



367 Bicycle License Plates / Tags Lot

Lot: (9) bicycle license plates / tags
"Rochester, Holyoke, Winona, Wausau, Chippewa Falls, Fort Dodge, Dallas".
Estimate: 25.00 - 50.00
Hammer Price: 125.00



370 Bicycle Bell Lot

Lot of three bells (2 high wheels) one as is. Estimate: 150.00 - 200.00
Hammer Price: 200.00



372 J. C. Higgins Balloon Bicycle

C. 1950 J. C. Higgins balloon bicycle. Nice original condition. Estimate: 200.00 - 300.00
Hammer Price: 825.00



December 1, 2012 Pedaling History Bicycle Museum Auction 12/1/2012

LOT #

379 Emblem Safety Bicycle

C. 1930 Emblem "Capital" safety bicycle.
Nice original. Estimate: 100.00 - 200.00
Hammer Price: 900.00



386 Westfield Folding Bicycle

C. 1938 Westfield folding bike. Nice original condition. Estimate: 200.00 - 300.00
Hammer Price: 250.00



387 Rear Hub Collection

Lot: (13) rear hubs, various makes "Bendix, Durex, Morrow". Estimate: 150.00 - 250.00
Hammer Price: 120.00



388 Bicycle Collectable Lot

Large lot including advertising tins, cast ink wells (reproduction), glasses, plates, mugs etc. Estimate: 25.00 - 50.00
Hammer Price: 30.00



389 Chain Ring Lot

(4) Chain rings - 1 huge maybe a Racycle? Estimate: 50.00 - 75.00
Hammer Price: 175.00



390 Heil Brothers - Track Racer

C. 1930 Heil Brothers-Track Racer, missing 1 pedal. Estimate: 150.00 - 250.00
Hammer Price: 450.00



LOT #

391 Railroad Hi-Ball Hand Car

Railroad Hi-Ball Hand Car, child's cart, AMF USA. Estimate: 50.00 - 75.00
Hammer Price: 125.00



392 Scooter Lot

C. 1920's Roller-Ski Scooter, and c. 1946 Scooter Skate. Estimate: 50.00 - 75.00
Hammer Price: 125.00



393 Childrens Toys

Lil Red Tricycle - art deco, 5" wheels, 1935 and GB Kid's Bike - Dino, made in Italy, very small, 1 missing pedal. Estimate: 25.00 - 45.00
Hammer Price: 50.00



394 Scooter

C. 1940 balloon tire scooter. Estimate: 25.00 - 50.00
Hammer Price: 90.00



395 Tricycle

C. 1900 strap steel tricycle. Repainted. Estimate: 75.00 - 100.00
Hammer Price: 275.00



396 Tricycle

C. 1900's tricycle. Estimate: 30.00 - 60.00
Hammer Price: 125.00



397 Ratchet Scooter

C. 1920's ratchet scooter - 3 wheel. Unique drive mechanism. Estimate: 50.00 - 100.00
Hammer Price: 300.00



December 1, 2012 Pedaling History Bicycle Museum Auction 12/1/2012

LOT #

398 Iver Johnson Tricycle

Iver Johnson tricycle with bell. Estimate:
75.00 - 125.00
Hammer Price: 450.00



399 Tricycle

C. 1930 ratchet drive tricycle. Estimate:
50.00 - 75.00
Hammer Price: 80.00



400 Auto Wheel Tricycle - N. Tonawanda

C. 1930's auto wheel tricycle, N. Tonawanda. Nice original with bell. Estimate: 25.00 - 45.00
Hammer Price: 50.00



401 Cleveland Child's Pneumatic Bicycle

C. 1930 Cleveland child's 20" diameter wheel pneumatic. Original. Estimate: 200.00 - 300.00
Hammer Price: 1,000.00



402 Bicycle Pocket Watch Lot

Lot including a pocket watch with cyclists along with case with cyclists motif. Estimate: 50.00 - 75.00
Hammer Price: 250.00



403 Bicycle Siren and Bell Lot

(3) bicycle sirens and a Starr bell. Estimate: 25.00 - 50.00
Hammer Price: 125.00



LOT #

404 New Departure Advertising Medal

New Departure five part advertising medal. Estimate: 40.00 - 60.00
Hammer Price: 225.00



405 Columbia Mountain Bicycle

C. 1990's Columbia dual suspension mountain bicycle. As new. Estimate: 100.00 - 150.00
Hammer Price: 90.00



406 Paper Clip Lot

Two paper clips. Estimate: 50.00 - 100.00
Hammer Price: 175.00



407 Meerschaum Pipe

Meerschaum pipe 4" in length. Estimate: 50.00 - 100.00
Hammer Price: 175.00



408 Bugle

Bugle marked "The buglet...London". Estimate: 100.00 - 150.00
Hammer Price: 575.00



409 Meerschaum Cigarette Holder

Meerschaum Cigarette Holder 3 3/4". Estimate: 25.00 - 35.00
Hammer Price: 175.00



410 Schwinn Stingray Lemon Peeler Bicycle

Schwinn Stingray Lemon Peeler, 5-speed, full suspension. Nice original. Estimate: 300.00 - 500.00
Hammer Price: 1,300.00



December 1, 2012 Pedaling History Bicycle Museum Auction 12/1/2012

LOT #

411 Bicycle Desk Set

Desk pen holder with handlebar design and ink cups. Estimate: 40.00 - 60.00
Hammer Price: 100.00



412 Bicycle License Plate Lot

(11) bicycle license plates. Estimate: 25.00 - 50.00
Hammer Price: 50.00



413 Pair of Grips

Pair of unique wood grips. Estimate: 25.00 - 45.00
Hammer Price: 150.00



414 Bicycle Skirt Lifter

Victorian ladies bicycle skirt lifter. Estimate: 50.00 - 75.00
Hammer Price: 200.00



415 Wood Tricycle

C. 1875 22" x 20" wheel diameter, 1 replaced frame member and pedal. Estimate: 200.00 - 300.00
Hammer Price: 325.00



416 Bicycle Skirt Lifter

Victorian ladies bicycle skirt lifter. Estimate: 50.00 - 100.00
Hammer Price: 200.00



417 Bicycle Skirt Lifter

Victorian ladies bicycle skirt lifter. Pat'd 1876. Estimate: 75.00 - 125.00
Hammer Price: 500.00



LOT #

418 Westfield Folding Bicycle

C. 1940's Westfield Corp., folding bicycle. Estimate: 200.00 - 300.00
Hammer Price: 250.00



419 Bicycle Flask

Early flask in alligator and silver plate. Estimate: 75.00 - 125.00
Hammer Price: 350.00



420 Racing Bicycle

C. 1920 Heil Brothers champion men's racer. Estimate: 150.00 - 250.00
Hammer Price: 425.00



421 Cycling Lot

Bicycle clips, arm band reflectors, advertising puzzle links etc. Estimate: 25.00 - 45.00
Hammer Price: 20.00



422 AMF Roadmaster, Jet Pilot

C. 1980 Roadmaster, Jet Pilot. Original condition. Estimate: 25.00 - 50.00
Hammer Price: 10.00



423 Reproduction Cast Iron Bank Professor Pug Frog

Reproduction cast iron bank professor Pug Frog. Estimate: 20.00 - 30.00
Hammer Price: 30.00



424 BMX Magnum 37 Stunt Bike

BMX Magnum 37 Stunt Bike, extra sprockets, MCS components. Estimate: 50.00 - 100.00
Hammer Price: 150.00



December 1, 2012 Pedaling History Bicycle Museum Auction 12/1/2012

LOT #

425 Iver Johnson Tool Lot

Lot: Iver Johnson screw driver and wrench.
Estimate: 30.00 - 50.00
Hammer Price: 60.00



426 Lotus 10 Speed

C. 1970 Lotus men's 10-speed racer, with shoes. Estimate: 50.00 - 75.00
Hammer Price: 200.00



427 Wrench Lot

Lot: Wrenches incl. Sterns, Fauber MFG.
Estimate: 20.00 - 30.00
Hammer Price: 80.00



428 Wrench

Barnes wrench. Estimate: 25.00 - 50.00
Hammer Price: 50.00



429 Wrench Lot

Lot: Two wrenches, one Overman Wheel and one Victor Nipple. Estimate: 50.00 - 75.00
Hammer Price: 50.00



430 Bicycle Bell Lot

Lot of (4) bicycle bells. Estimate: 25.00 - 35.00
Hammer Price: 50.00



431 Irish Mail Quadracycle

C. 1920 Irish Mail - wood/metal quadracycle. Nice original. Estimate: 50.00 - 75.00
Hammer Price: 200.00



LOT #

432 Shelby Flying Cloud Pneumatic Bicycle

C. 1920 Shelby Flying Cloud, women's pneumatic safety bicycle. Estimate: 25.00 - 45.00
Hammer Price: 80.00



433 Monark Firestone Balloon Bicycle

C. 1957 Monark Firestone super-deluxe balloon bicycle, lady's tank model. Original w/battery damage on tank. Estimate: 100.00 - 200.00
Hammer Price: 325.00



434 Bicycle Bell Lot

Lot of (2) bicycle bells. Estimate: 50.00 - 100.00
Hammer Price: 225.00



435 Acme Pennant Pneumatic Bicycle

C. 1898 Acme Pennant, Acme Cycle Co., Elk Hart, IN. Ridable, older restoration. Estimate: 200.00 - 300.00
Hammer Price: 525.00



436 Moulton Folding Bicycle

C. 1970 Moulton folding bicycle designed by Alex Moulton with saddlebags. 4-speed Sturmy Archer, excellent original condition. Estimate: 150.00 - 350.00
Hammer Price: 500.00



437 Bicycle Accessory Lot

Lot of four oilers and two air pressure gauges. Estimate: 35.00 - 45.00
Hammer Price: 40.00



December 1, 2012 Pedaling History Bicycle Museum Auction 12/1/2012

LOT #

438 Raleigh Fireball DTR Bicycle

C. 1970 Raleigh Fireball DTR, child's bicycle. Estimate: 25.00 - 50.00
Hammer Price: 50.00



LOT #

444 Silver King Tricycle

C. 1935 Monark Silver King aluminum tricycle. Estimate: 250.00 - 350.00
Hammer Price: 2,600.00



439 Bicycle Tool Lot

Lot: wrenches incl. Dudley nipple, nipple, spoke gauge. Estimate: 40.00 - 60.00
Hammer Price: 225.00



445 Fowler Pneumatic Safety Bicycle

C. 1897 Fowler men's pneumatic safety, manufactured by Hill Cycle Mfg. Co., Chicago, IL. As found original. Estimate: 100.00 - 200.00
Hammer Price: 775.00



440 Motobecane Men's 10-speed

Motobecane Men's 10-speed bicycle, French, Grand record, excellent condition, Campagnolo Nuovo record. Estimate: 150.00 - 250.00
Hammer Price: 475.00



446 Bicycle Tool Lot

Lot of two chain tools. Estimate: 10.00 - 20.00
Hammer Price: 80.00



441 Firestone Silver Cruiser Balloon Bicycle

Firestone Silver Cruiser middle weight. Excellent original condition. Estimate: 100.00 - 150.00
Hammer Price: 90.00



447 Bicycle Tool Lot

Lot of (16) misc. bicycle tools. Estimate: 25.00 - 50.00
Hammer Price: 150.00



442 Wrench Lot

Lot: (4) wrenches one "Eureka". Estimate: 25.00 - 45.00
Hammer Price: 30.00



448 Moulton Folding Bicycle

C. 1960 Moulton folding bicycle, front suspension, original condition. Estimate: 250.00 - 350.00
Hammer Price: 325.00



443 Bicycle Tire Tool Lot

Lot of (8) bicycle tire tools. Estimate: 20.00 - 30.00
Hammer Price: 60.00



449 Bicycle Hub Lot

Lot of (4) bicycle hubs. Estimate: 25.00 - 50.00
Hammer Price: 120.00



December 1, 2012 Pedaling History Bicycle Museum Auction 12/1/2012

LOT #

450 Schwinn Stingray Bicycle

C. 1960 Schwinn Stingray. Good original condition. Estimate: 50.00 - 100.00
Hammer Price: 125.00



LOT #

456 Murray Child's Bicycle

C. 1950 Murray child's bicycle, with fancy decorations. Estimate: 25.00 - 50.00
Hammer Price: 20.00



451 Misc. Lot

Tire pump and dual toot horn. Estimate: 25.00 - 50.00
Hammer Price: 60.00



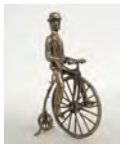
457 Sidewalk Bicycle

C. 1940 Werlich sidewalk bicycle, hard tires 16". Estimate: 25.00 - 50.00
Hammer Price: 10.00



452 Sterling Silver Highwheel Ornament

Sterling silver highwheel ornament. 43 grams. Estimate: 30.00 - 50.00
Hammer Price: 75.00



458 Huffy Centennial Bicycle

C. 1976 Huffy Centennial bicycle, with red white and blue banana seat. Estimate: 75.00 - 100.00
Hammer Price: 30.00



453 Lot of Cards and Chips

Lot: Bicycle playing cards and chips. Estimate: 20.00 - 40.00
Hammer Price: 20.00



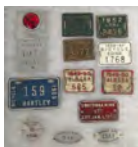
459 Harley Davidson Bicycle

Harley Davidson Sportster, 20". Estimate: 100.00 - 150.00
Hammer Price: 90.00



454 12 Bicycle License Plates

Lot: (12) Bicycle License Plates / Tags "Austin, Hartley, Minneapolis, Edina, Owatonna, Montana". Estimate: 25.00 - 50.00
Hammer Price: 225.00



460 Heidmann Balloon Bicycle

C. 1950 Heidmann-works balloon bicycle, Hanover, Germany. Estimate: 150.00 - 250.00
Hammer Price: 175.00



455 Bicycle Bell Lot

Lot of (3) bicycle bells. Estimate: 40.00 - 60.00
Hammer Price: 20.00



461 Balloon Bicycle

C. 1930 balloon bicycle, double cross bar with child's seat. Estimate: 100.00 - 200.00
Hammer Price: 250.00



December 1, 2012 Pedaling History Bicycle Museum Auction 12/1/2012

LOT #

462 Roadmaster Balloon Bicycle

C. 1950 Cleveland Welding Roadmaster balloon bicycle, with bell, mirror, light.
Estimate: 100.00 - 200.00
Hammer Price: 200.00



463 Hiawatha Middle Weight

C. 1960's Hiawatha middle weight bicycle, nice original. Estimate: 100.00 - 150.00
Hammer Price: 375.00



464 Irish Mail

C. 1920 Irish Mail. Estimate: 25.00 - 50.00
Hammer Price: 40.00



465 Union Folding Bike

C. 1950 Dedemstaart Union Netherland folding bicycle. Good original condition.
Estimate: 150.00 - 350.00
Hammer Price: 875.00



466 Schwinn Bicycle

Schwinn light weight bicycle Estimate: 25.00 - 50.00
Hammer Price: 100.00



467 Red Racer Wagon

C. 1950 Red Racer wagon, wood. Good original condition. Estimate: 50.00 - 75.00
Hammer Price: 125.00



468 Two "Hy-Speed" Red Wagons

Two "Hy-Speed" Red Wagons. Estimate: 25.00 - 35.00
Hammer Price: 20.00



LOT #

469 Loblaw Wood Wagon

C. 1950's Loblaw Express wood wagon, with railings. Estimate: 50.00 - 75.00
Hammer Price: 70.00



470 Sherwood Spring Coaster wagon

C. 1920's Sherwood Spring coaster, wood wagon. Nice original. Estimate: 75.00 - 125.00
Hammer Price: 200.00



471 Red Racer Wagon

C. 1920 Red Racer Wagon, wood with break (broken). Estimate: 75.00 - 125.00
Hammer Price: 200.00



472 1950's Boy's Bicycle

C. 1950's unknown boys unique double tube frame-Chrome. Estimate: 50.00 - 75.00
Hammer Price: 60.00



473 Queens City Pneumatic Bicycle

C. 1920's - Queen City pneumatic bicycle, truss frame, manufactured in Elmira, NY. Cracked rear rim. Estimate: 50.00 - 100.00
Hammer Price: 525.00



474 Sears Tourist Lightweight 3-Speed Bicycle

C. 1960's Sears Tourist lightweight 3-speed bicycle. As found. Estimate: 25.00 - 35.00
Hammer Price: 10.00



December 1, 2012 Pedaling History Bicycle Museum Auction 12/1/2012

LOT #

475 Western Flyer Balloon Bicycle

C. 1960's Western Flyer 24" balloon bicycle, as found original. With warranty paperwork. Estimate: 50.00 - 75.00
Hammer Price: 20.00



476 Shelby Flying Cloud Balloon Bicycle

Shelby Flying Cloud balloon bicycle. Original. Estimate: 150.00 - 250.00
Hammer Price: 175.00



477 Walnut Pneumatic Bicycle

C. 1900 G. E. Nash "Walnut" Lockport, NY pneumatic bicycle. With basket. Estimate: 100.00 - 150.00
Hammer Price: 200.00



478 Cleveland Roadmaster Balloon Bicycle

C. 1940 Cleveland Roadmaster balloon bicycle. Estimate: 100.00 - 200.00
Hammer Price: 475.00



479 Convertible Tricycle / Bicycle

28" x 20" or 28" x 22", Kid's convertible Bike / trike, wire wheels, very rare. Estimate: 500.00 - 700.00
Hammer Price: 425.00



480 Roadmaster Balloon Bicycle

C. 1940 Roadmaster balloon bicycle, very nice original. Estimate: 250.00 - 350.00
Hammer Price: 325.00



LOT #

481 Alenex Lightweight Bicycle

C. 1987 Alenex lightweight bicycle, Ratchet drive. As new. Estimate: 100.00 - 200.00
Hammer Price: 275.00



482 Pope Balloon Bicycle

Pope Westfield balloon bicycle with JC Higgins Speedometer. Estimate: 100.00 - 200.00
Hammer Price: 90.00



483 Coker Monster Cruiser Bicycle

Coker Mfr, Monster Cruiser. Excellent condition. Estimate: 200.00 - 300.00
Hammer Price: 575.00



484 Columbia Lightweight Bicycle

C. 1950 Sports lightweight roadster. Good original condition. Estimate: 50.00 - 75.00
Hammer Price: 60.00



485 Schwinn "Ace" Balloon Bicycle

C. 1936-37 Schwinn "Ace" balloon bicycle. Nice original. Estimate: 100.00 - 150.00
Hammer Price: 1,400.00



486 Bamboo Men's Bicycle

C.1999 bamboo men's bicycle. Estimate: 25.00 - 50.00
Hammer Price: 10.00



December 1, 2012 Pedaling History Bicycle Museum Auction 12/1/2012

LOT #

487 Scooter Lot

C. 1930's Coaster Craft Scooter, Ratchet, and c. 1920 No. 1 Skudder, Jansey Products, Janesville, WI. Estimate: 75.00 - 100.00
Hammer Price: 65.00



488 World War II Schwinn Lightweight

C. 1944 Schwinn "Victory" lightweight bicycle. Original black no nickel. Estimate: 100.00 - 150.00
Hammer Price: 175.00



489 Horse Riding Toy

C. 1930's horse spring jumper. Estimate: 125.00 - 150.00
Hammer Price: 200.00



490 Huffy Tourister Lightweight Bicycle

C. 1985 Huffy Tourister lightweight bicycle - 10 speed cruiser. Excellent condition. Estimate: 25.00 - 35.00
Hammer Price: 5.00



491 MTD Cleveland Chopper

Chopper as found. Estimate: 25.00 - 35.00
Hammer Price: 425.00



492 Folding Bicycle

Folding Bicycle. Sturmy Archer 3-speed. Estimate: 25.00 - 50.00
Hammer Price: 50.00



LOT #

493 Strida Bicycle

C. 1985 Strida bicycle, British made, belt drive. Estimate: 25.00 - 50.00
Hammer Price: 150.00



494 Schwinn World Lightweight

C. 1950s Schwinn "World" lightweight. Estimate: 25.00 - 35.00
Hammer Price: 40.00



495 Schwinn Lightweight

Schwinn lightweight. Estimate: 25.00 - 35.00
Hammer Price: 65.00



496 Columbia Superb Reproduction Bicycle

Reproduction of a 1941 Columbia Superb bicycle. Estimate: 200.00 - 300.00
Hammer Price: 1,500.00



497 Irish Mail

C. 1940 Irish Mail, "Torpedo". Metal, repainted. Estimate: 50.00 - 75.00
Hammer Price: 100.00



498 Lot Hockey Sticker Coaster & Child Scooter

C. 1939 hockey sticker coaster, original condition, and C. 1920 child scooter with brake. Estimate: 50.00 - 100.00
Hammer Price: 10.00



499 Scooter

C. 1960 Super Sonda scooter. Chain drive. Estimate: 35.00 - 50.00
Hammer Price: 175.00



December 1, 2012 Pedaling History Bicycle Museum Auction 12/1/2012

LOT #

500 Iron Tricycle Velocipede

24" x 18" Child's iron tricycle, nice original condition, lacks saddle cover.

Estimate: 100.00 - 200.00

Hammer Price: 225.00



Terms:

Cash - Traveler's Checks - Visa - Mastercard - Discover

15% Buyers Premium

First time buyers must establish credit prior to auction to pay by check.

Local sales tax: NYS Sales Tax 8%

Conditions of Sale

1. Some of the lots in this sale are offered subject to a reserve. This reserve is a confidential minimum price agreed upon by the consignor & COPAKE AUCTION below which the lot will not be sold. In any event when a lot is subject to a reserve, the auctioneer may reject any bid not adequate to the value of the lot.

2. All items are sold "as is" and neither the auctioneer nor the consignor makes any warranties or representations of any kind with respect to the items, and in no event shall they be responsible for the correctness of the catalogue or other description of the physical condition, size, quality, rarity, importance, medium, provenance, period, source, origin or historical relevance of the items and no statement anywhere, whether oral or written, shall be deemed such a warranty or representation. Prospective bidders should inspect the merchandise thoroughly before bidding to determine its condition, size and whether or not it has been repaired or restored. All sales are final & refunds will not be given.

3. The auctioneer reserves the right to withdraw any merchandise before the sale and shall have no liability whatsoever for such withdrawal.

4. The auctioneer will be the final judge as to who is the successful bidder. In the event of any dispute the auctioneer shall at his discretion decide to reopen the bidding or not.

5. As a service to our customers the COPAKE AUCTION will execute absentee bids if so authorized in writing. Absentee bids should be made on the Bidder Form available in the office. This form should be clearly and completely filled out. All absentee bids will be executed competitively during the sale. Items will be purchased for the lowest price possible regardless of the amount of the order bid. Where two absentee bidders bid the same amount the first received will be honored. This service is

offered as a convenience and COPAKE AUCTION will not be responsible for any errors or failures to properly execute the bids.

6. On the fall of the auctioneers hammer, ownership to the offered lot will pass to the highest bidder acknowledged by the auctioneer, and as such the bidder assumes full risk and responsibility and will pay the full purchase price of the item (s).

7. All items are subject to a 15% buyers premium which will be added to the successful bid price and is payable by the purchaser as part of the total purchase price.

8. All items are subject to an 8% sales tax unless the purchaser possesses a sales tax exemption number.

9. All accounts are to be settled by the end of the sale. We do not accept checks from first time buyers unless accompanied with a bank letter of credit or previous approval from the auctioneer. Payment may also be made by cash, Travelers Checks, MasterCard or Visa.

10. All property must be removed from the premises by 10:00 am on the following day after the sale unless other arrangements have been made with the auctioneer. If items are not removed 14 days after the date of sale a storage fee of one dollar per day will be charged to the purchaser of said item (s). In addition items not removed from the premises eight weeks after date of sale will be resold at auction. The COPAKE AUCTION shall have no liability for any damage to property left on its premises.

11. The COPAKE AUCTION may at its discretion and at purchaser's request package and ship items as directed by the purchaser. In such event, purchaser agrees that all such packaging, handling and shipping is at the sole risk of the purchaser and that COPAKE AUCTION shall have no liability for any loss or damage to items. Purchaser shall pay in advance all packaging expenses including labor, materials, postage and carrier fees and all insurance charges.

12. Bidding on any item indicates your acceptance of these terms and all other terms announced at the Auction Gallery.